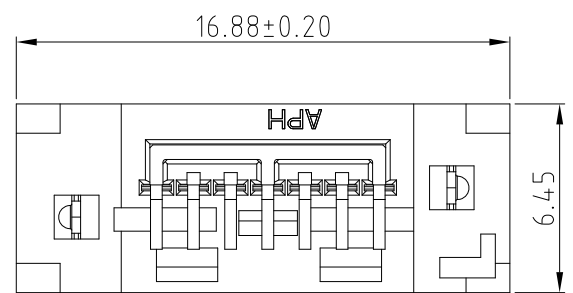
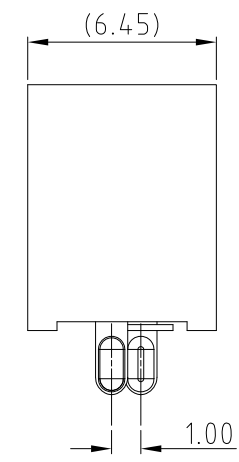
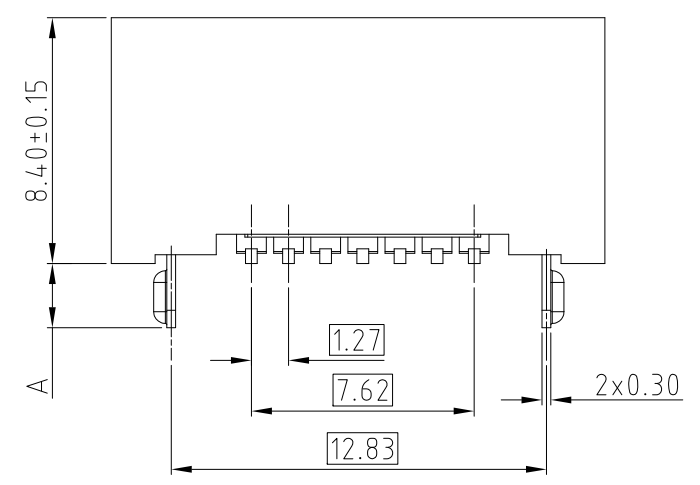
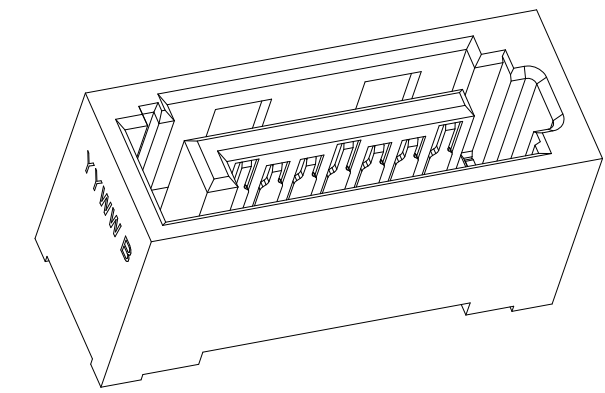
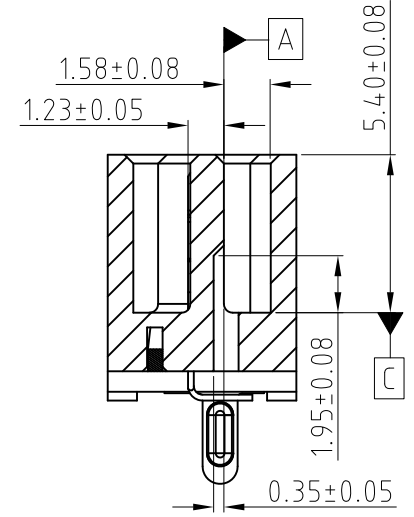
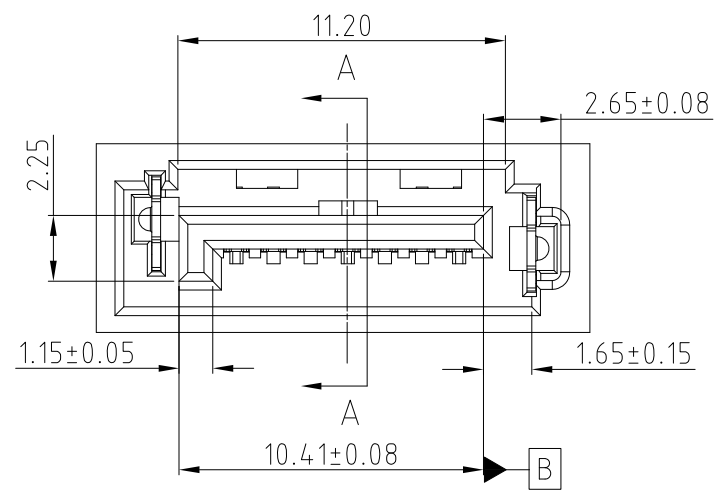


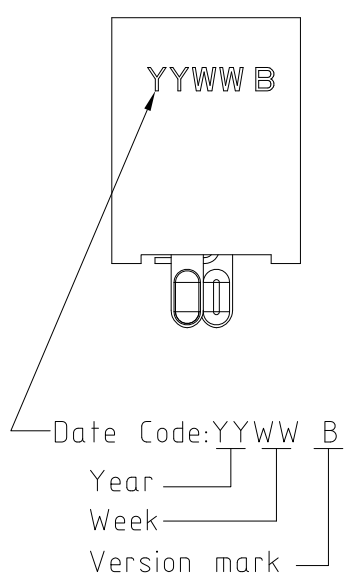
This document is the property of Amphenol Corporation and is delivered on the express condition that it is not to be disclosed, reproduced or used, in whole or in part, for manufacture or sale by anyone other than Amphenol Corporation without its prior consent, & that no right is granted to disclose or to use any information in this document.

REVISIONS				
SYM	ECN	DESCRIPTION	DATE	APPROVED
1	HK---	FIRST RELEASE	9/23/2016	IP
2	HK---	ADD THE SPEC OF THE DAMAGE RETENTION FORCE	9/29/2016	IP
3	HKXXXX	UPDATED VERSION MARK TO "B" BY CUSTOMER REQUEST	12/19/2016	IP
4	HKXXXX	ADDED OPERATION TEMPERATURE	01/09/2017	IP
5	HK7506	CORRETED OPERATION TEMPERATURE	01/13/2017	IP
6	HKXXXX	UPDATE TABLE-1 INFORMATION	03/01/2017	IP



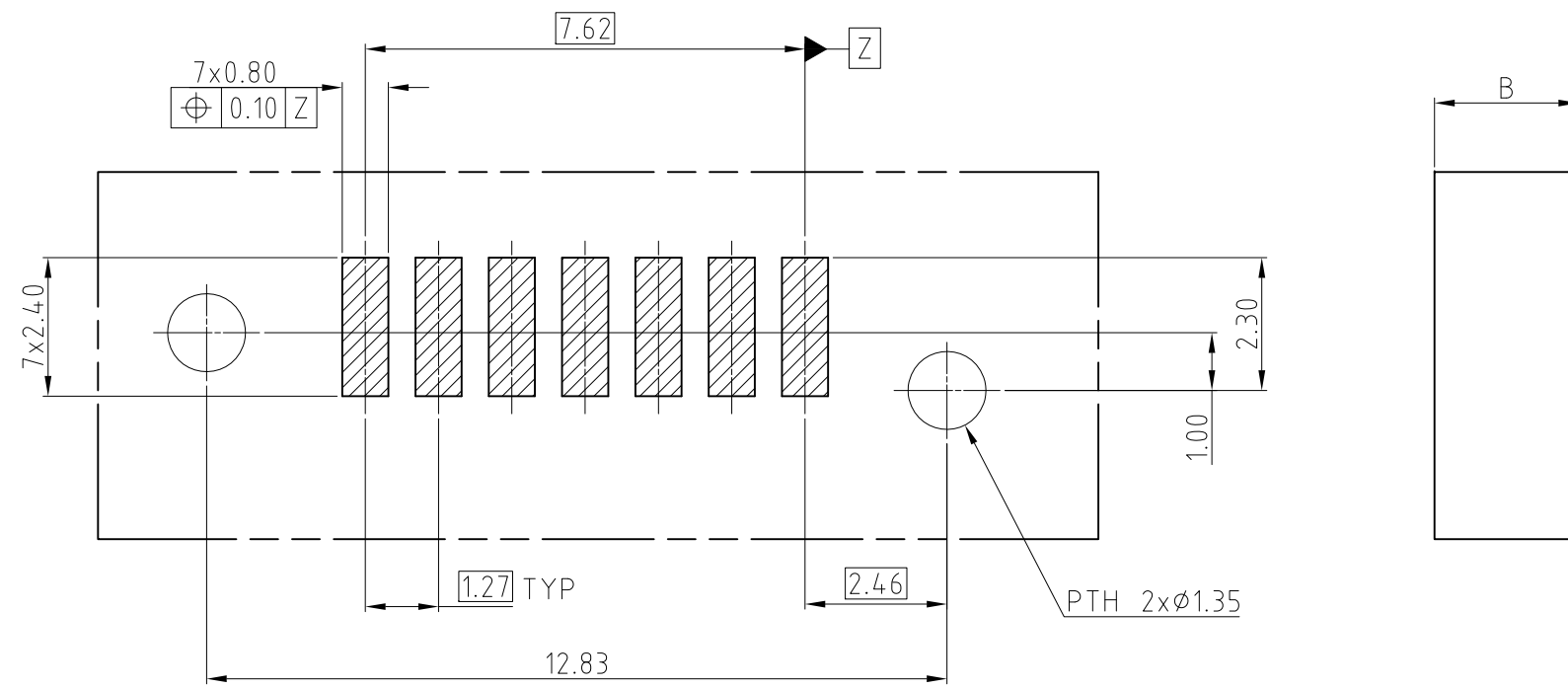
CUSTOMER DRAWING

UNLESS OTHERWISE SPECIFIED TOLERANCES U.S. METRIC .X +/- 0.50 .XX +/- 0.20 .XXX +/- 0.10 FRACTIONS +/- ANGLES +/- 3° FOR MATERIALS AND FINISHES SEE NOTES REMOVE SHARP EDGES DIMENSIONS U.S. INCHES (METRIC) (MM)	APPROVAL DRAWN Evan.Dai CHECKED Fuan.Jiang CHECKED	DATE 03/01/17 03/01/17	Amphenol Amphenol East Asia Limited TITLE Customer Drawing For 12G SATA 7P V/T SMT PLUG SIZE DRAWING NO. REV. A3 SAT3-M323-203-XXX 6 SCALE NONE SHEET 1 OF 2
	DRAWING FILE : Drawing\SATA\SAT3M323203XXX-6		
	ANGLE OF PROJECTION 		

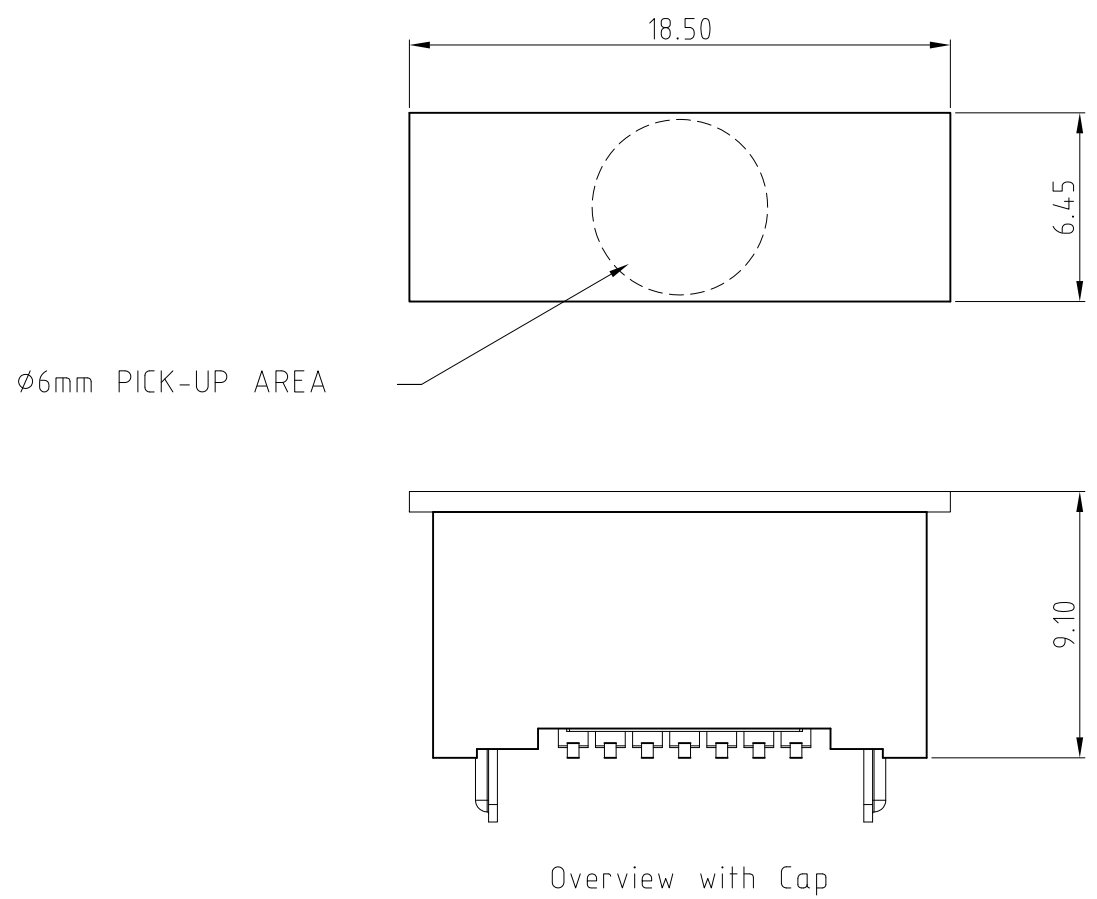


This document is the property of Amphenol Corporation and is delivered on the express condition that it is not to be disclosed, reproduced or used, in whole or in part, for manufacture or sale by anyone other than Amphenol Corporation without its prior consent, & that no right is granted to disclose or to use any information in this document.

REVISIONS				
SYM	ECN	DESCRIPTION	DATE	APPROVED
		REFER TO SHEET 1		



RECOMMENDED PCB LAYOUT
SCALE 2:1 GENERAL TOLERANCE ±0.05mm



Overview with Cap

- NOTES:
- MATERIAL:
HOUSING: HIGH TEMPERATURE THERMOPLASTIC UL94V-0, COLOR: BLUE.
CONTACTS: BRASS;
PLATING: REFER TO PN SYSTEM ON MATING AREA;
1.27um MIN NICKEL UNDERPLATED OVERALL;
2.54um MATTE PURE TIN ON SOLDER TAILS.
 - SOLDER CLIP: BRASS;
PLATING: 2.54um MIN MATTE PURE TIN OVER
1.27um MIN NICKEL UNDERPLATED.
 - GENERAL SPECIFICATION:
CURRENT RATING: 1.5A (POWER SECTION);
CONTACT RESISTANCE: 30mΩ MAX.
INSULATOR RESISTANCE: 1000MΩ MIN.
DIELECTRIC WITHSTANDING VOLTAGE: 500 VAC
OPERATION TEMPERATURE: -20°C~+85°C
 - DIMENSIONING SHALL BE INTERPRETED PER ASME Y14.5M 1994
 - MATERIAL SHOULD BE FULFILLED AMPHENOL SPEC.# S-SN-002, HALOGEN FREE PRODUCTS ALSO NEED TO MEET #S-SN-004
 - THE DAMAGE RETENTION FORCE OF THE CONNECTOR IS 95N MIN
 - ORDER PN SYSTEM: x PN WITH/WITHOUT "-" IS THE SAME
SAT3-M323-203-X-XX

SOLDER TAB LENGTH & PCB THICKNESS
REFER TO TABLE-1

MATING AREA PLATING
1- 0.76um MIN Au.
2- 0.38um MIN Au.
3- Gold FLASH

PACKING STYLE
NIL- TRAY
TR- TAPE AND REEL



CUSTOMER DRAWING

TABLE-1:

Series NO#	DIM. A (Solder tab length)	DIM. B (PCB Thickness)
03	2.20mm	2.30mm/2.50mm
04	2.85mm	3.20mm

UNLESS OTHERWISE SPECIFIED TOLERANCES U.S. METRIC .X +/- 0.50 .XX +/- 0.20 .XXX +/- 0.10 FRACTIONS +/- ANGLES +/- 3°	APPROVAL	DATE	Amphenol Amphenol East Asia Limited
	DRAWN Evan.Dai	03/01/17	
FOR MATERIALS AND FINISHES SEE NOTES REMOVE SHARP EDGES	CHECKED Fuan.Jiang	03/01/17	TITLE Customer Drawing For 12G SATA 7P V/T SMT PLUG
DIMENSIONS U.S. INCHES (METRIC) (MM)	DRAWING FILE : Drawing\SATA\SAT3M323203XXX-6		
	ANGLE OF PROJECTION		SIZE DRAWING NO. A3 SAT3-M323-203-XXX
	SCALE NONE		REV. 6
	SHEET 2 OF 2		