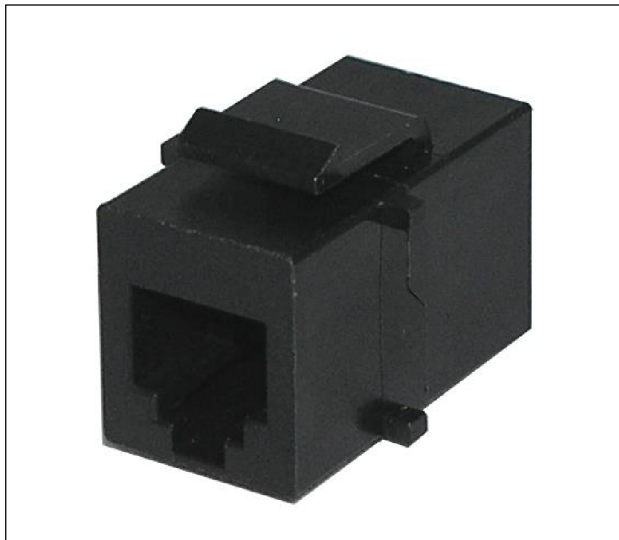


RJ12 6p6c keystone coupler



RJ12 6p6c keystone coupler (KCK66) (KCK66#24 - Pack of 24)

This RJ12 (6p6c) keystone coupler snaps into any keystone outlet or empty keystone patch panel. This enables the use of pre-terminated telephone cables and saves time by eliminating termination and testing.

Features

- RJ11 and RJ12 (6p4c + 6p6c) high quality keystone coupler
- Designed to fit industry standard keystone outlets and patch panels
- Compatible 16 and 24 port patch panels available with or without cable management
- Available as part of our innovative new panel mount coupler (KCK66pm), designed for easy mounting on panels of virtually any thickness

Specifications

- Dimensions: 27mm x 18.5mm x 16mm
 - Colour: black
 - Housing: ABS UL94V-0
-

ROHS Compliant

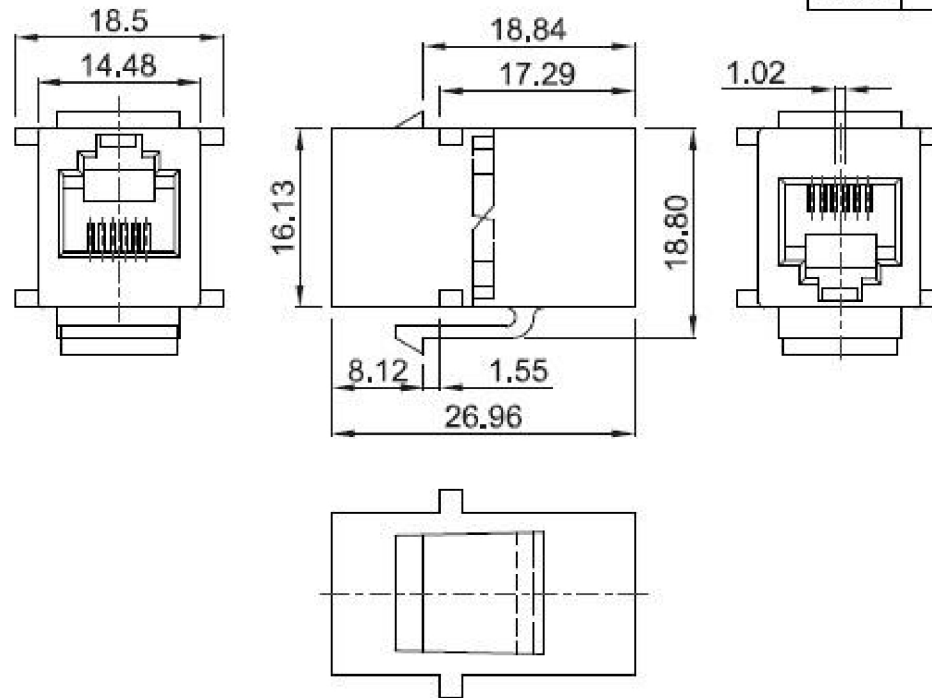
DATE	2014/06/10
Revision	A

Features :

- Jack insertion life >750 mating cycles
- IDC Insertion life >250 mating cycles
- Operating temperature : -40°C~+60°C

Electrical :

- Contact resistance : 20m ohm
- DC Current rating : 1,5Amps
- DC resistance : Max.0.1 ohm
- Insulation Resistance : 500m ohm
- Dielectric withstanding voltage : 1000V



TOLERANCE

.XXXX	—
.XXX	0.10
.XX	0.25
.X	0.38

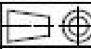
MATERIAL

CATEGORY	<input type="checkbox"/> CAT.5E <input type="checkbox"/> CAT.6 <input checked="" type="checkbox"/> CAT.3 <input type="checkbox"/> OTHER _____
HOUSING	ABS UL94V-0
CONTACT	0.35 mm DIAMETER PHOSPHOR BRONZE GOLD PLATED OVER NICKEL
GOLD-PLATING	<input type="checkbox"/> 0,0762um/3u Inch <input checked="" type="checkbox"/> 0,15um/6u Inch <input type="checkbox"/> 0,38um/15u Inch <input type="checkbox"/> 0,76um/30u Inch <input type="checkbox"/> 1,27um/50u Inch
COLOR	<input type="checkbox"/> WHITE <input checked="" type="checkbox"/> BLACK <input type="checkbox"/> GREEN <input type="checkbox"/> BLUE <input type="checkbox"/> YELLOW <input type="checkbox"/> RED <input type="checkbox"/> ORANGE <input type="checkbox"/> IVORY <input type="checkbox"/> OTHER _____
TYPE OF PRODUCT	<input checked="" type="checkbox"/> UNSHIELD <input type="checkbox"/> SHIELD : 0,25mm THICKNESS COPPER ALLOY WITH NICKLE PLATED.

P/NO. KCK66

ITEM. Inline Coupler	CO. EX2138	S/N.
DR. Wakka 2014/06/10	APPD.	CHKD.

TUK Ltd

FILE,	SCALE / 
UNIT mm	SIZE A4

REV.	DESCRIPTION	ENG.	APPROVAL
1	2	3	4