



BL Touch Auto Levelling Sensor

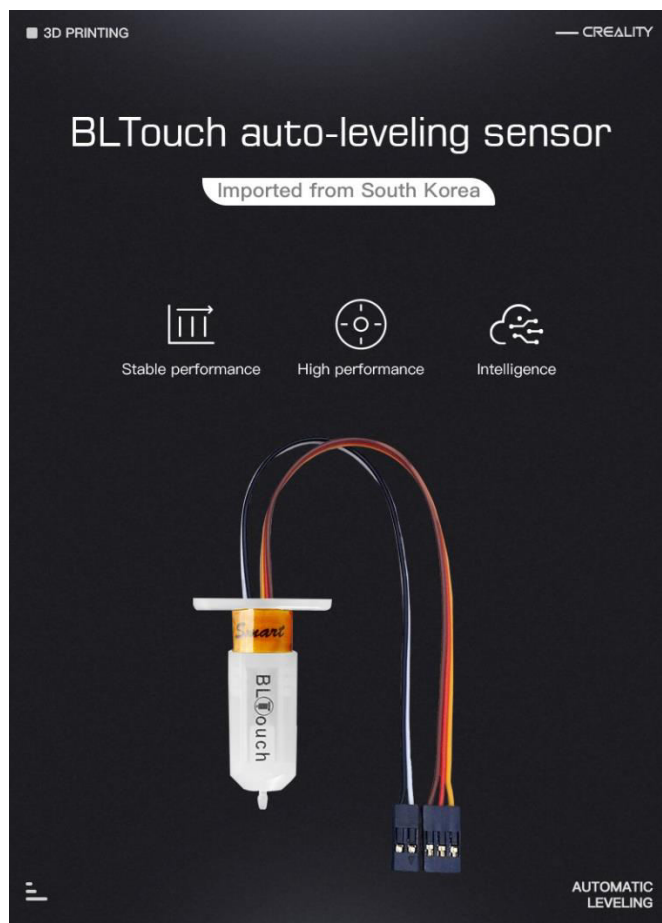
MFR: 4001010016

Product Information

High Precision, Intelligent Sensor

Easy to Install and Use

Three Types of Connection Wires, Applicable for Multiple Models



BL-Touch
VS
Automatic Bed Leveling Touch Sensor

20%

Improved accuracy by 20%

30%

Improved stability by 30%



High precision, intelligent sensor

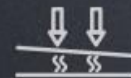
BL-Touch with high precision and low power consumption can automatically detect leveling and output accurate data. The standard deviation is only 0.005mm, making leveling more convenient

0-4_{mm}

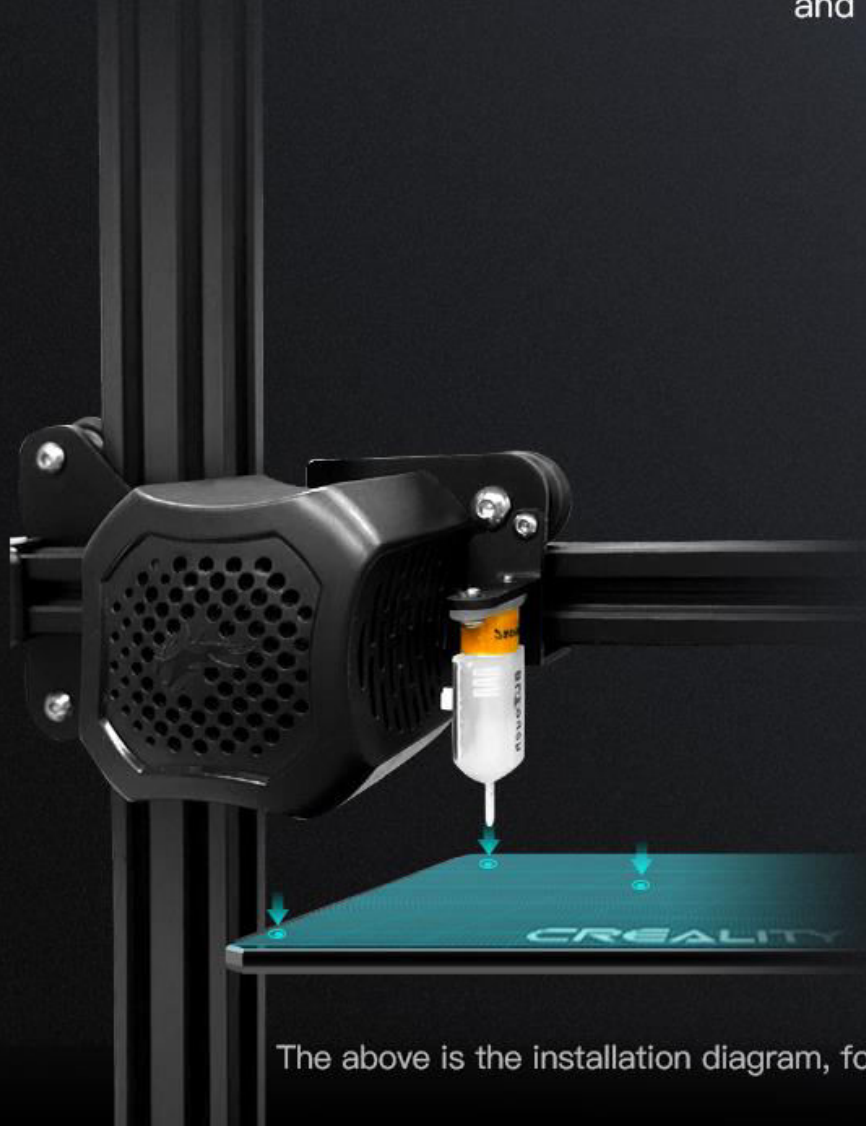
Detection zone

0.005_{mm}

Standard deviation



Auto detection
and leveling



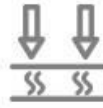
The above is the installation diagram, for reference only.

Easy to install and use

BL-Touch sensor is small in size and simple in structure, printing when connected. It can accurately measure the inclination of the hot bed and automatic compensation of Z axis, easily avoid the printing failure caused by uneven hot bed, so as to stable print



Small size and simple structure



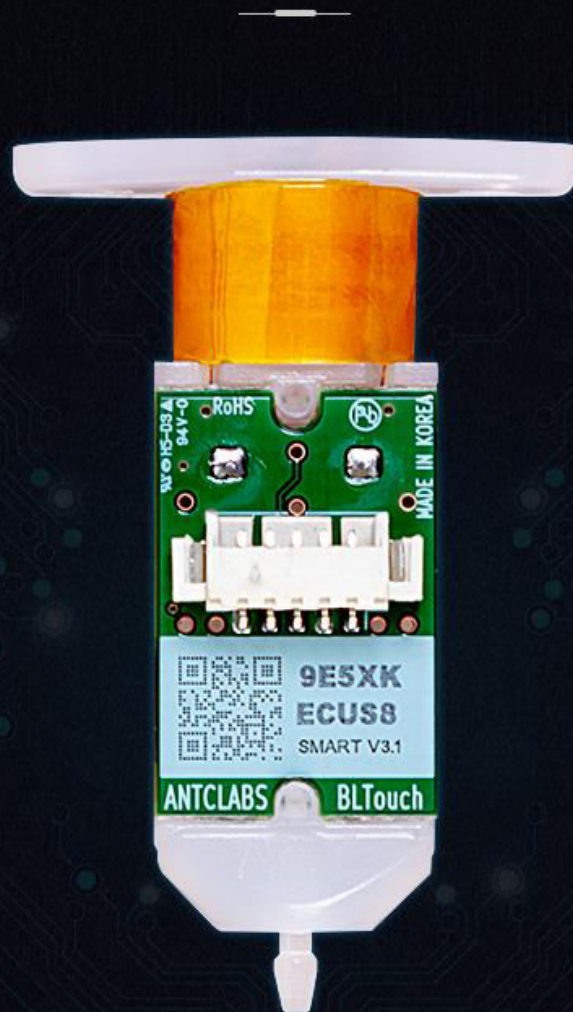
Auto-leveling when connected



The above is the installation diagram, for reference only.

Low power consumption

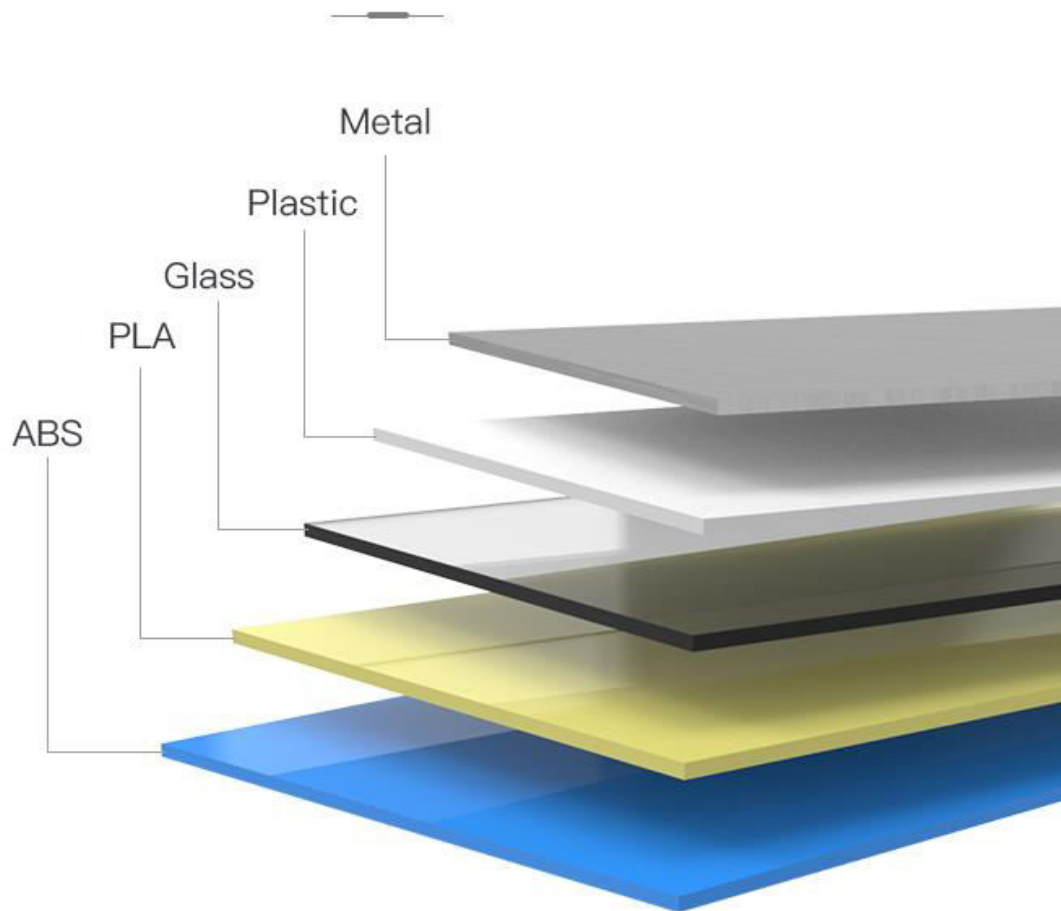
In standby mode, no matter whether it is pulled out or retracted, the standby current of solenoid valve without current flow is less than 15ma, while in working mode, it suddenly rises to 100ms / 300ma. Low power consumption and avoiding heating problems



Please keep away from magnetic components such as strong magnet, motor and fan for installation

Wide application, strong compatibility

Compatible with ABS, PLA, glass, metal, plastic and all materials. Support more filaments and apply to every control board of 3D printer



Do not use any light and not approach any inductance / capacitance sensor
Provide high precision through Hall Effect control. Therefore, the platform board can be selected at will.

Three types of connection wires, applicable for multiple models

Equipped with connecting wire of three kinds of ports and self-designed mounting support, which can be adapted to various printer models to operate flexibly and save costs.



Adaptable to Creality
8-bit mainboard
3D printer



Adaptable to Creality
32-bit mainboard
3D printer



Adaptable to FDM 3D
printer(Need to extend
the wire and modify
the connector with
self effort-Port
equipped)

CREALITY



The mounting support can be designed by yourself according to different models



Product information

Product name: BLTouch auto-leveling sensor

Applicable model: FDM 3D Printer

Product size: 26*11*40mm Package size: 100*100*36mm

Product N.W.: 36g Package weight: 106.8g



A-side



B-side

