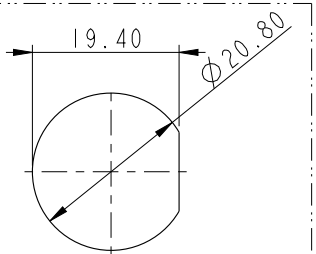
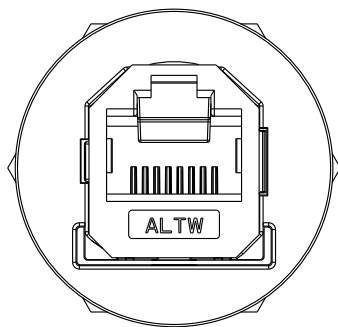
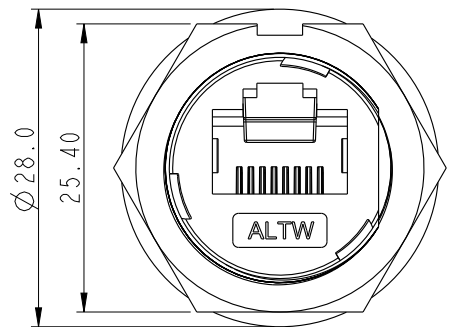
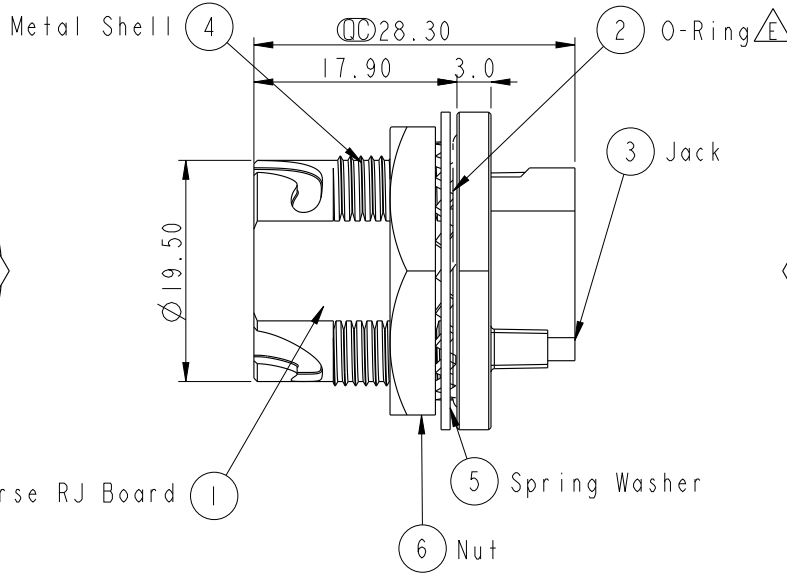
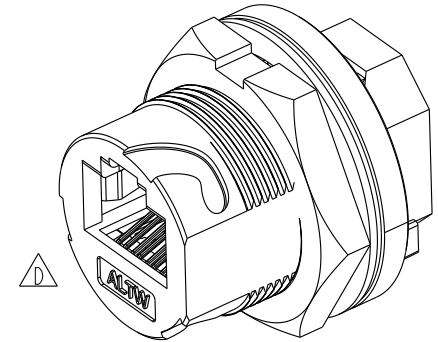
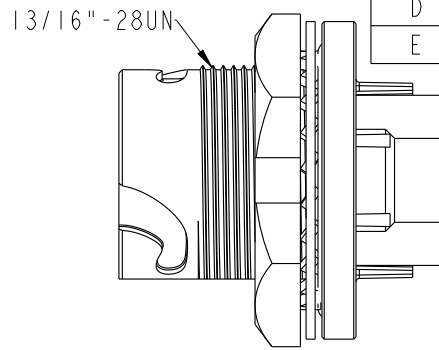


REV.	ECN NO.	DATE	SIGN	DESCRIPTION
C	C190541	2019/04/16	JC Chen	Modified parts
D	C201852	2020/11/25	Nan_Su	$\triangle D$ *2
E	C220039	2022/01/07	Nan_Su	$\triangle E$ *1



- $\triangle B$ Note:
- * CC Important Dimension to check
 - * Waterproof Rate: IP67, Mated
 - * Insert Housing: Thermoplastic, Black
 - * Pin: Copper Alloy, Gold Plated
 - * Metal Shell & Jack & Nut: Metal, Nickel Plated
 - $\triangle C$ * O-Ring: Silicone Gray_Black.
 - * Spring Washer: Stainless steel.
 - * Use without waterproof cap or Dust cap for panel thickness Max:4.2mm
 - * Use with waterproof cap or Dust cap for panel thickness Max:3.0mm
 - $\triangle C$ * Screw Torque :9~12kgf-cm
 - * Gasket and Nut are packed separately in PE bags.

UNIT:mm		
TOLERANCE		
.X	± 0.25	
.XX	± 0.1	
.XXX	± 0.05	
ANGLES	$\pm 1^\circ$	

TITLE RJ, C METAL, C6A SHLD FRONT FASTENED, F, PNL JACK S, 3LOCK $\triangle D$			
SCALE 3:2	SIZE A4	SHEET 1 OF 1	
REV. E	WC-REV. .0	CC : Inspection item	

Amphenol LTW
安費諾亮泰企業股份有限公司

ITEM NO RCM-6APFFH-TCM7001	DRAWN BY JC Chen	DATE 2019-04-16
DWG NO RCM-6APFFH-TCM7001	CHECKED BY Li Feng	DATE 2019-04-16
CUSTOMER ALTW	APPROVED BY Jerry	DATE 2019-04-16

THIS DOCUMENT IS SUBJECT TO CHANGE WITHOUT NOTICE. IT IS CONFIDENTIAL AND A PROPERTY OF Amphenol LTW. DISCLOSURE TO THIRD PARTY HAS TO BE AUTHORIZED BY Amphenol LTW.