

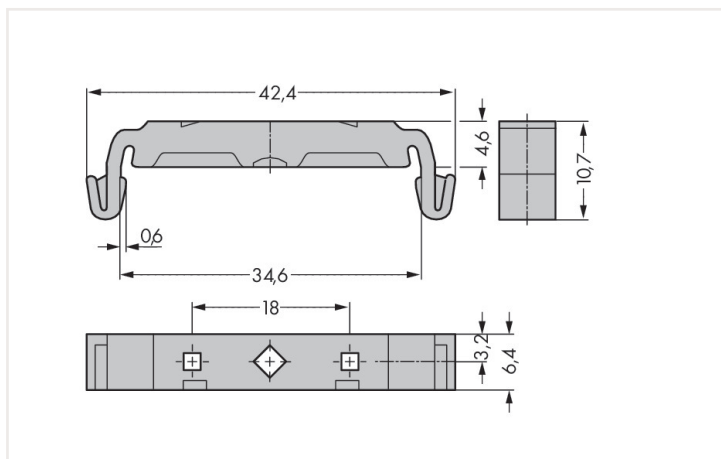
Data sheet | Item number: 209-120

Mounting foot; can be snapped on terminal blocks with snap-in mounting foot; for mounting on relay-modules; 6.4 mm wide; gray

<https://www.wago.com/209-120>



Color: ■ gray



Dimensions in mm

Technical data

Main product function

Mounting accessories

Mounting type

DIN-35 rail

Physical data

Width	6.4 mm / 0.252 inch
Height	42.3 mm / 1.665 inch
Depth	10.8 mm / 0.425 inch

Mechanical data

Suitable	for male and female connectors with snap-in mounting feet (for panel mounting)
----------	--

Material data

Color	gray
Material group	I
Insulation material	Polyamide (PA66)
Flammability class per UL94	V0
Fire load	0.036 MJ
Weight	1.2 g

Commercial data

Product Group	2 (Terminal Block Accessories)
eCl@ss 10.0	27-14-11-92
eCl@ss 9.0	27-14-11-92
ETIM 7.0	EC002848
ETIM 6.0	EC002848
PU (SPU)	500 (25) Stück
Packaging type	Box
Country of origin VKOrg Germany	CH
GTIN	4017332272421
Customs tariff number VKOrg Germany	39269097900

Downloads

Environmental Product Compliance

Compliance Search

Environmental Product Compliance 209-120

↓

Documentation

Bid Text

209-120	19.02.2019	xml 2.53 KB	↓
209-120	18.08.2017	doc 22.50 KB	↓

CAD/CAE-Data

CAD data

2D/3D Models 209-120

↓

CAE data

EPLAN Data Portal 209-120

↓

WSCAD Universe 209-120

↓

ZUKEN Portal 209-120

↓

1 Compatible products

1.1 Optional accessories

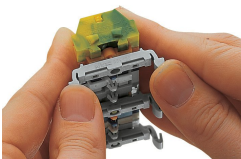
1.1.1 Installation

1.1.1.1 Mounting accessories

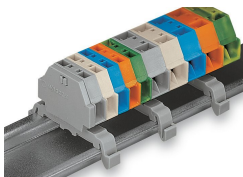


Item no.: 209-119
Fixing screw; for 209-120 mounting carrier

Installation notes



Terminal strip with snap-in mounting feet
Snapping a mounting foot (209-120).
(Distance between mounting feet: approx. 25 ... 30 mm)



Terminal strip; with snap-in mounting feet;
for DIN-35 rail

