

HDC MHE 4X2 FP

Weidmüller Interface GmbH & Co. KG
Klingenbergstraße 26
D-32758 Detmold
Germany

www.weidmueller.com

Product image**Flexible**

The four module sizes make for individual plug solutions that save a huge amount of space. The smaller pitch translates into an optimised design too.

General ordering data

Version	Signal module
Order No.	2636080000
Type	HDC MHE 4X2 FP
GTIN (EAN)	4050118692822
Qty.	1 pc(s).

Creation date April 18, 2022 7:11:26 AM CEST

Catalogue status 08.04.2022 / We reserve the right to make technical changes.

HDC MHE 4X2 FP**Weidmüller Interface GmbH & Co. KG**

Klingenbergstraße 26

D-32758 Detmold

Germany

www.weidmueller.com

Technical data**Dimensions and weights**

Depth	70.5 mm	Depth (inches)	2.776 inch
Height	63 mm	Height (inches)	2.48 inch
Width	7.15 mm	Width (inches)	0.281 inch
Net weight	26.419 g		

Temperatures

Limit temperature	-40 °C ... 125 °C
-------------------	-------------------

Environmental Product Compliance

REACH SVHC	Potassium perfluorobutane sulfonate 29420-49-3
------------	--

General data

Insulation strength	$10^{12} \Omega$	Material	Polycarbonate, glass fibre reinforced
Number of poles	4	Number of potentials	2
Plugging cycles	≥ 500	Pollution severity	3
Rated current (DIN EN 61984)	16 A	Rated impulse voltage (DIN EN 61984)	4 kV
Rated voltage (DIN EN 61984)	250 V	Rated voltage according to UL/CSA	600 V
Required plug-in slots	0.5	Series	ModuPlug
Surge voltage category	III	Type	Female
UL 94 flammability rating	V-0		

PE connection data

Connection type PE	Screw connection via module frame
--------------------	-----------------------------------

Version

Conductor cross-section, max.	2.5 mm ²	Conductor cross-section, min.	0.5 mm ²
Stripping length, rated connection	10 mm	Type of connection	PUSH IN with actuator
Wire connection cross section AWG, max.	AWG 14	Wire connection cross section AWG, min.	AWG 20

Classifications

ETIM 6.0	EC002312	ETIM 7.0	EC002312
ETIM 8.0	EC002312	ECLASS 9.0	27-44-02-92
ECLASS 9.1	27-44-02-18	ECLASS 10.0	27-44-02-92
ECLASS 11.0	27-44-02-92		

Important note

Product information

Data sheet**HDC MHE 4X2 FP**

Weidmüller Interface GmbH & Co. KG
Klingenbergstraße 26
D-32758 Detmold
Germany

www.weidmueller.com

Technical data**Approvals**

Approvals



UL File Number Search

E92202

Downloads

Engineering Data

[CAD data – STEP](#)

Product Change Notification

[Technical change - EN](#)

[Technical change - DE](#)

Catalogues

[Catalogues in PDF-format](#)

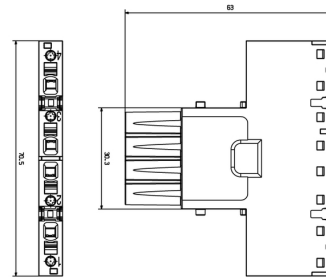
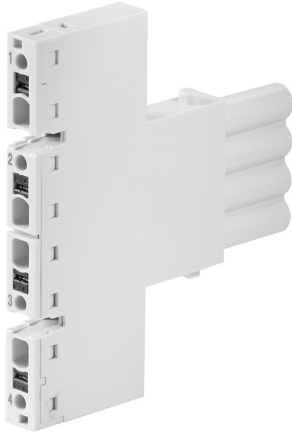
HDC MHE 4X2 FP

Weidmüller Interface GmbH & Co. KG
 Klingenbergstraße 26
 D-32758 Detmold
 Germany

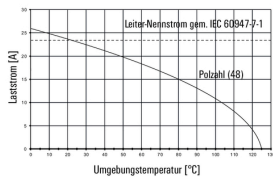
www.weidmueller.com

Drawings

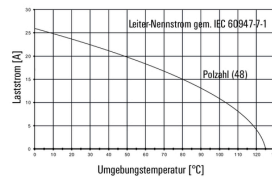
Product image



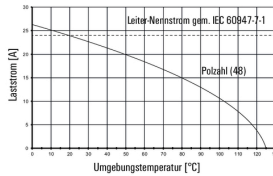
HDC MHE 4X2 MQT mit HDC MHE 4FQT / H07V-K2,5



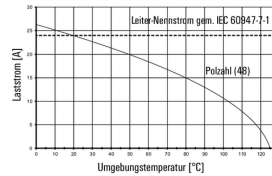
HDC MHE 4X2 MQT mit HDC MHE 4FQT / H07V-K2,5



HDC MHE 4X2 FQT mit HDC MHE 4MQT / H07V-K2,5



HDC MHE 4X2 FQT mit HDC MHE 4MQT / H07V-K2,5



HDC MHE 4X2

