

Data sheet Illuminated pushbutton Ø 22 mm stainless steel 304, with symbol.

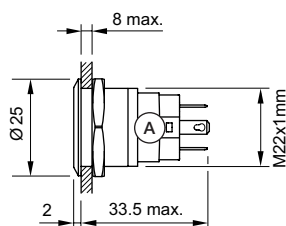
Part No.: 82-6151.2A24.B002

Technical data

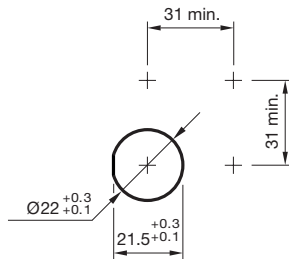


Terminal	null
Shape of illumination	Symbol
Operating voltage	24 V DC
Operating Travel	ca. 3 mm
Lens illumination	illuminative
Lens colour	Silver
Lens shape	flush
Lens material	Plastic metalised
Lens optics	opaque
Weight	0.025 kg
Contact material	Silver
Illumination colour	Blau
Kind of illumination	Single-LED
Switching action	Impuls
Switching system	Snap-action switching element
Symbol	Standby
Contacts	1 U
Operating temperature	- 30 °C ... + 70 °C
Approbations	CB, CCC, C UL, UL
Operating force	4 ... 7 N
Climate resistance	Damp heat, 21 days according to IEC 60512-11

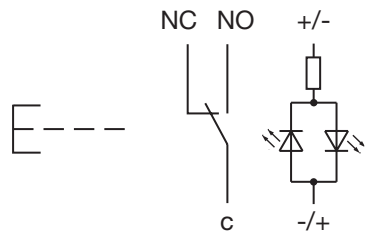
Dimensions



Mounting cut-outs



Wiring diagrams



Component layouts

