



Quick Start Guide

QG000129

TCS3707

ALS/Color and Proximity Sensor with Flicker Detection Evaluation Kit

TCS3707 EVM

v1-00 • 2019-Jan-09

Content Guide

1	Out of the Box.....	3	6	Contact and Support.....	9
2	Software Installation.....	4			
3	Connect Hardware.....	6			
4	Start the Application.....	7			
5	Uninstall Application.....	8			

1 Out of the Box



For a detailed description of the TCS3707 ALS/Color and Proximity Sensor with Flicker Detection Evaluation Kit, please refer to User Guide:

- UG000417

Each TCS3707 Evaluation Kit comes with the following components:

Figure 1 :
Evaluation Kit Contents



No.	Item	Description
1	TCS3707 Daughter Card	PCB with TCS3707 sensor installed
2	EVM Controller Board	Used to communicate USB to I2C
3	USB Cable (A to Mini-B)	Connects EVM controller to PC
4	Flash Drive	Includes application installer and documents

2 Software Installation

1. Plug the **ams** flash drive into an unused USB port
2. Double-click the **Setup.exe** file on the flash drive, or click Start > Run and type E:setup.exe and press Enter. **IMPORTANT:** Use the appropriate drive letter in the above command to install the software. Flash Drive will commonly be assigned the next available drive letter for example C: hard drive, D: CD-ROM, E: flash drive
3. The Setup Wizard will open and guide you through the installation of the TCS3707 host software, (Figure 2 through Figure 8).
4. At the end of the installation, click Finish to exit the setup.

Figure 2:
Welcome Screen

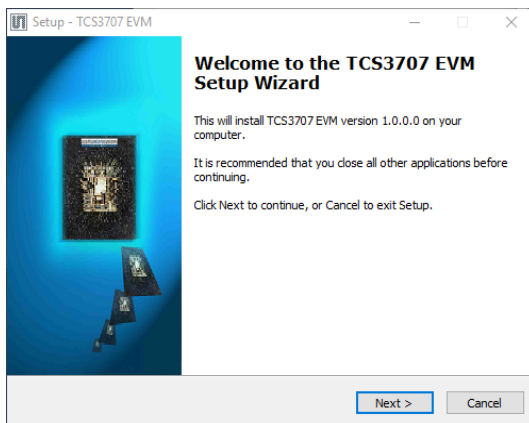


Figure 3:
Liability Disclaimer

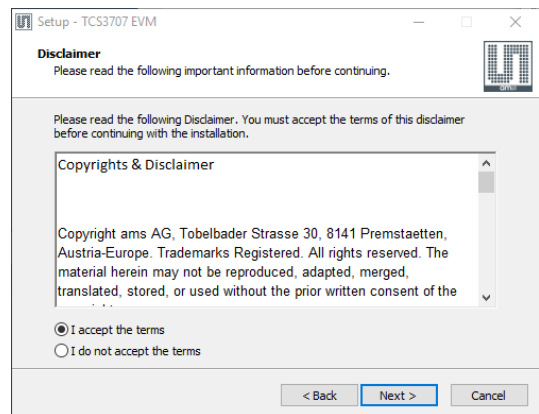


Figure 4:
Select Installation Folder

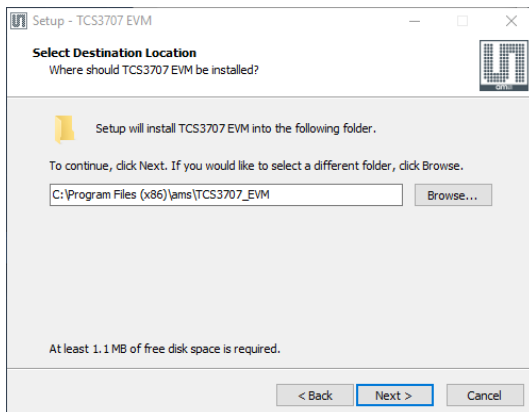


Figure 5:
Select Start Menu Folder

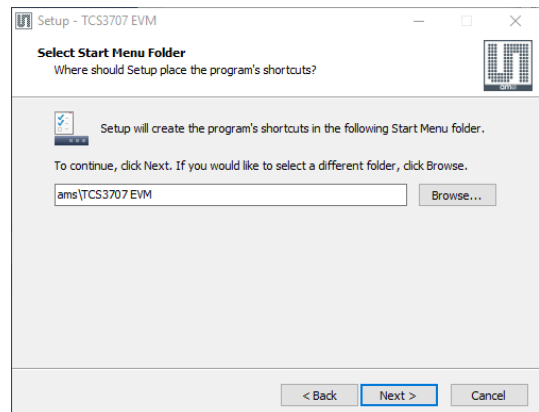


Figure 6:
Installation in Progress

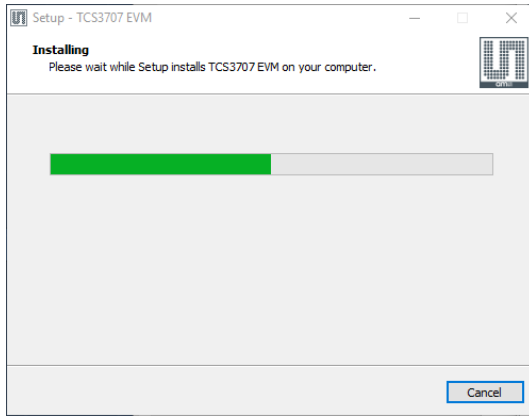


Figure 7:
Information Screen

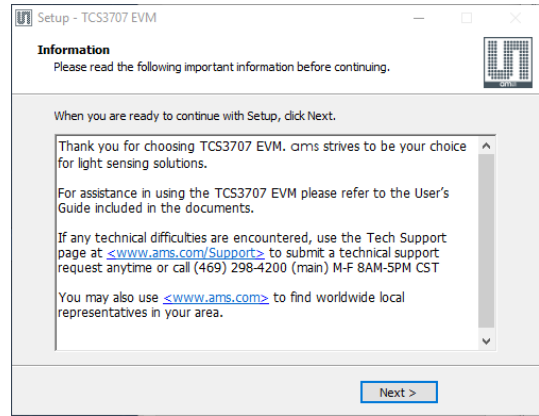
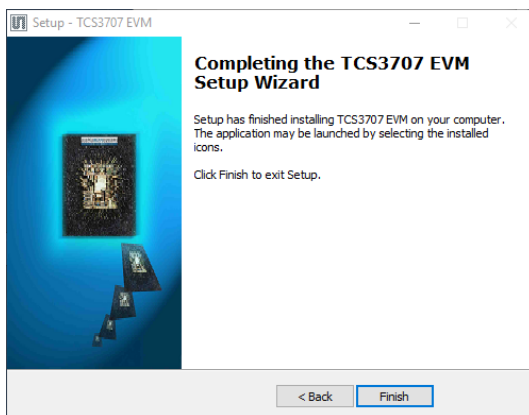


Figure 8:
Installation Completed Successfully



3 Connect Hardware

Plug the TCS3707 Daughterboard into the Controller board (Figure 1). Always use ESD procedures when handling the EVM.

Using the enclosed USB cable, plug the mini-B connector into the EVM module. Using the other end of the cable, plug the USB A-connector into a USB port on the computer.

When the USB cable is connected, the green LED should flash momentarily on power up to indicate that power is being received via the USB interface, and the controller board processor is running. If the green LED does not flash, check the USB cable connections; unplug the USB cable and try again. If the green LED still does not flash, check the PC for USB error messages.

4 Start the Application

To start the application select ams > TCS3707 EVM > TCS3707 EVM on the All Programs menu. The default installation directory depending on the device and the operating system you are using is:

C:\Program Files\ams\TCS3707_EVM (Windows 32 bit operating systems)

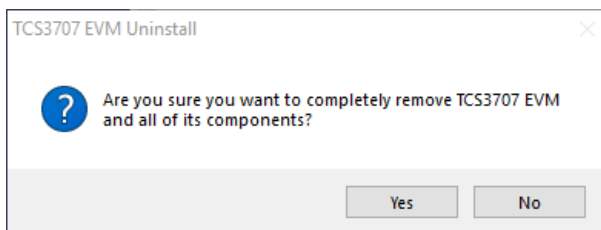
C:\Program Files (x86)\ams\TCS3707_EVM (Windows 64 bit operating systems)

A different install path may be selected by the user during the install (Figure 4). When started, the TCS3707 window will open on the PC and automatically connect to the hardware.

5 Uninstall Application

To remove the software from your computer (Figure 9), select **ams > TCS3707 EVM > Uninstall TCS3707 EVM** or use the Windows Control Panel.

Figure 9:
Remove Installation



6 Contact and Support

For details of using the TCS3707 EVM please refer to the User's Guide included in the documents.

If any technical difficulties are encountered, use the Tech Support page at www.ams.com/Support to submit a technical support request anytime or call (469) 298-4200 (main) M-F 8AM-5PM CST.

You may also use www.ams.com to find worldwide local representatives in your area.

Headquarters

ams AG
Tobelbader Strasse 30
8141 Premstaetten
Austria, Europe
Tel: +43 (0) 3136 500 0

Please visit our website at www.ams.com

Buy our products or get free samples online at www.ams.com/Products

Technical Support is available at www.ams.com/Technical-Support

Provide feedback about this document at www.ams.com/Document-Feedback

For sales offices, distributors and representatives go to www.ams.com/Contact

For further information and requests, e-mail us at ams_sales@ams.com

Copyright ams AG. Trademarks Registered. All rights reserved. The material herein may not be reproduced, adapted, merged, translated, stored, or used without the prior written consent of the copyright owner.

ams AG shall not be liable to recipient or any third party for any damages, including but not limited to personal injury, property damage, loss of profits, loss of use, interruption of business or indirect, special, incidental or consequential damages, of any kind, in connection with or arising out of the furnishing, performance or use of the technical data herein. No obligation or liability to recipient or any third party shall arise or flow out of ams AG rendering of technical or other services.