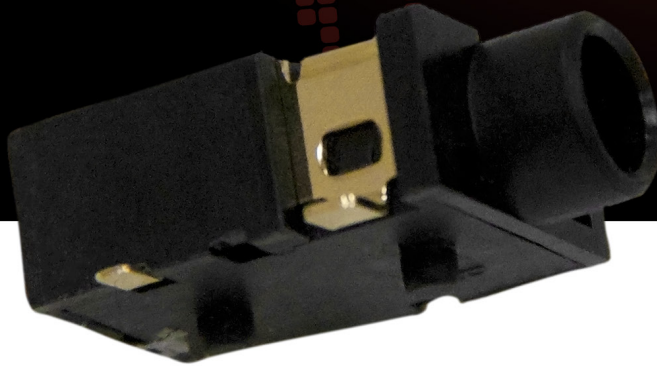
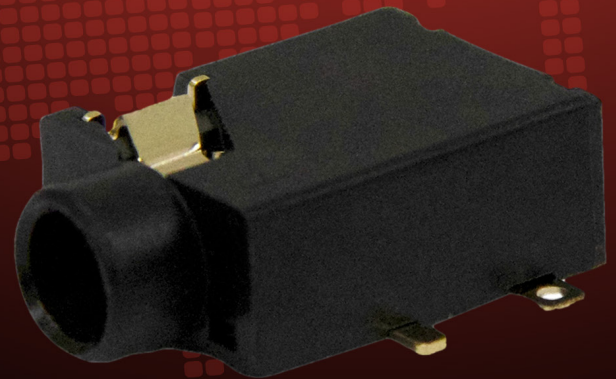




NEW PRODUCT BULLETIN 686

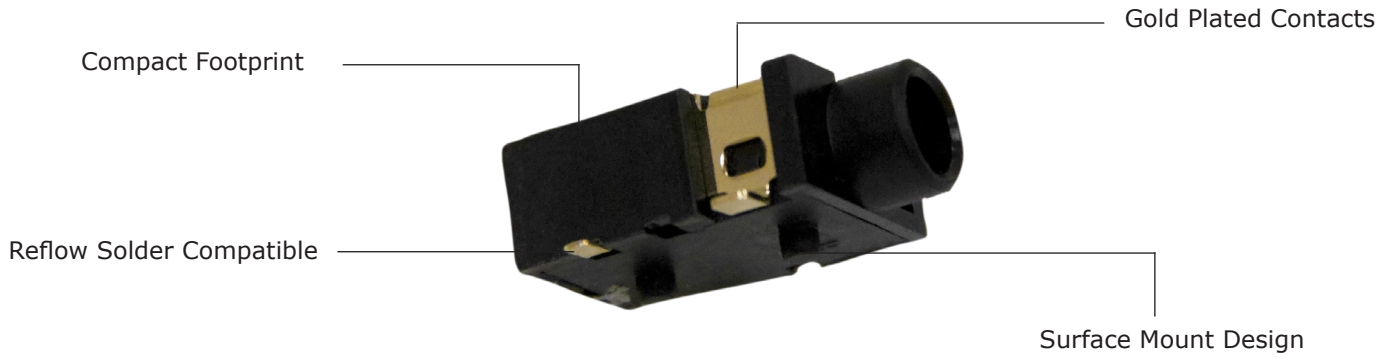
SURFACE MOUNT  
**3.5MM**  
STEREO JACKS



**Switchcraft**<sup>®</sup>  
**CONXALL**<sup>®</sup>

HARSH ENVIRONMENT CONNECTIVITY SOLUTIONS

5555 N ELSTON AVE | CHICAGO, IL | 773.792.2700 | SALES@SWITCHCRAFT.COM | WWW.SWITCHCRAFT.COM



## EXPANDED OPTIONS!

**35RASM SERIES SURFACE MOUNT 3.5MM JACKS FROM SWITCHCRAFT** have been the most trusted brand in the industry for over 20 years. They feature a high quality, durable design in an extremely small, cost effective package. The surface mount design with standard tape & reel packaging is built to facilitate easy automated assembly. Multiple variations featuring a shunt switch with a variety of schematics offer designers the flexibility they need. And of course, like all Switchcraft jacks, signal quality is critical, and these jacks are suitable for professional audio applications.



3 conductor jacks are ideal for stereo audio or other signal applications requiring multiple conductors



A shunt switch with a variety of circuits offer design engineers flexibility for any application



Switchcraft jacks have set the standard of quality for over 75 years

PART NO.	BODY STYLE	CIRCUIT SCHEMATIC
35RASMT2BHWNTRX	Wide Body	2B (Double Open)
35RASMT3BHWNTRX	Wide Body	3B (Tip Closed, Ring Open)
35RASMT4BHWNTRX	Wide Body	4B (Double Closed)
35RASMT2BHSNTRX	Narrow Body	2B (Double Open)
35RASMT3BHSNTRX	Narrow Body	3B (Tip Closed, Ring Open)

**Note: custom color options are available. Contact factory for more details.**



35RASMT2BHWNTRX



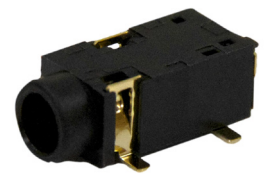
35RASMT3BHWNTRX



35RASMT4BHWNTRX



35RASMT2BHSNTRX



35RASMT3BHSNTRX