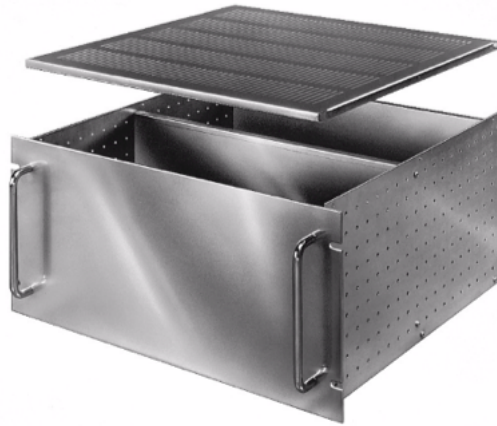


# RACK MOUNT CHASSIS

## NEW SIZES BEING ADDED 24" & 26" DEEP



### Ordering Information

Part Number	External Height (in)	External Width (in)	External Depth (in)	Accessory Solid Top/Bottom	Accessory Ventilated Top/Bottom
RM-14292	5.25	19.00	24.00	TBC-14254	TBC-14264
RM-14293	7.00	19.00	24.00	TBC-14254	TBC-14264
RM-14294	8.75	19.00	24.00	TBC-14254	TBC-14264
RM-14295	10.50	19.00	24.00	TBC-14254	TBC-14264
RM-14296	5.25	19.00	26.00	TBC-14255	TBC-14264
RM-14297	7.00	19.00	26.00	TBC-14255	TBC-14264
RM-14298	8.75	19.00	26.00	TBC-14255	TBC-14264
RM-14299	10.50	19.00	26.00	TBC-14255	TBC-14264

*Priced, sold and packaged in quantities of one  
Contact the factory for modifications*

### Benefits and Features

- Front Panel - .12" Thick mill finish with "Surface Shield" protection
- Side & Rear Panels - .09" aluminum
- Finish – Natural
- Shipped unassembled with all necessary hardware

## Accessories

- Solid or Ventilated Top and Bottom covers available
- Mounting Bracket kit to allow for 4 point mounting in cabinet racks with two pairs of panel mounting rails
- Holes on Chassis for mounting slides
- Internal Chassis - .09" aluminum, natural finish, Can be mounted horizontally or vertically
- Handles – Chrome plated steel
- Solid Top or Bottom cover - .05" aluminum, natural finish
- Ventilated Top or Bottom cover - .05" aluminum, natural finish, .12" x .75" slots for maximum ventilation
- Slides – two-piece slide, 20.00" long with 15.00" travel. Requires two pairs of panel mounting rails

## Applications

- Small electronic equipment
- Enclosure for Power supplies
- Amplifiers
- Equipment needing to be mounted in a cabinet rack
- Related Products
- Switches Pushbuttons Connectors Cable Glands
- Key Customer Contacts
- Design Engineers and Designers Manufacturing Engineers Electronic Engineers and Designers

## Related Products

- Cabinet Racks
- Equipment that requires to be rack mounted
- Power supplies / Amplifiers

## Key Customer Contacts

- Design Engineers
- Installation Designers / Managers
- Manufacturing Engineers

## Questions to Ask

- Does your equipment require an enclosure?
- Does it need to be rack mounted?
- Do you want an enclosure that can slide out of a rack for access
- Do you need a chassis that is very flexible to meet your needs?

## Availability

*July 2022*

# BUD Rack Mounted Chassis