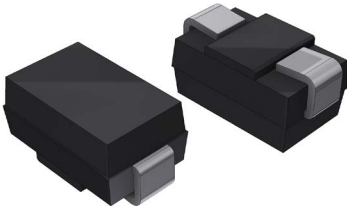


Surface Mount Glass Passivated Rectifiers

multicomp PRO

RoHS
Compliant



Features

- For surface mounted applications
- Low reverse leakage current
- Low forward voltage drop
- High surge capacity
- Meet UL flammability classification 94V-0

Mechanical Data

- Case: JEDEC A-SMA, molded plastic
- Polarity: Color band denotes cathode
- Mounting position: Any

Applications

- For use in low voltage, high frequency inverters, polarity protection applications

Maximum Ratings and Electrical Characteristics

Ratings at 25°C ambient temperature unless otherwise specified.

Single phase, halfwave, 60Hz, resistive or inductive load. For capacitive load, derate by 20%.

Characteristics	Symbol	M7	Unit
Maximum Repetitive Peak Reverse Voltage	V_{RRM}	1000	V
Maximum RMS Voltage	V_{RMS}	700	
Maximum DC Blocking voltage	V_{DC}	1000	
Maximum Average Forward Rectified Current @ $T_L=100^\circ\text{C}$	$I_{(AV)}$	1	A
Peak Forward Surge Current, 8.3mS Single Half Sine-Wave, Superimposed on Rated Load (JEDEC Method)	I_{FSM}	30	
I^2t Rating for Fusing ($t<8.3\text{mS}$)	I^2t	3.7	A ² s
Peak Forward Voltage at 1.0A DC (Note1)	V_F	1.1	V
Maximum DC Reverse Current @ $T_J=25^\circ\text{C}$ at Rated DC Blocking Voltage @ $T_J=100^\circ\text{C}$	I_R	5	uA
		100	
Typical Junction Capacitance (Note 2)	C_J	10	pF
Typical Thermal Resistance Junction to Case	$R_{\theta JA}$	30	°C/W
Operating Junction Temperature Range	T_J	-55 to +150	°C
Storage Temperature Range	T_{STG}	-55 to +150	

- NOTE: 1. 300uS pulse width, 2%duty cycle. 300uS
2. Measured at 1.0 MHz and applied reverse voltage of 4.0V DC.
3. The typical data above is for reference only.

Newark.com/multicomp-pro
Farnell.com/multicomp-pro
sg.element14.com/b/multicomp-pro

multicomp PRO

Surface Mount Glass Passivated Rectifiers

Rating and Characteristic Curves

Fig. 1 - Forward Current Derating Curve

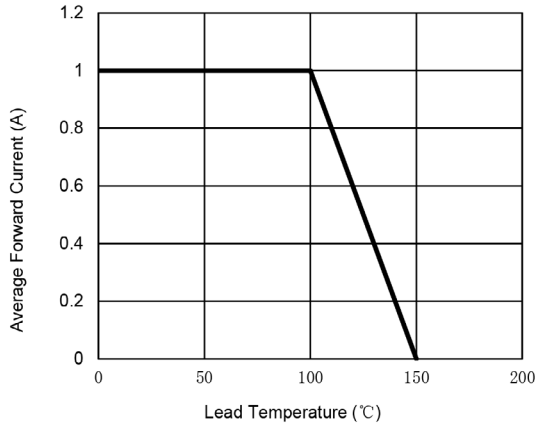


Fig. 2 - Maximum Non-Repetitive Surge Current

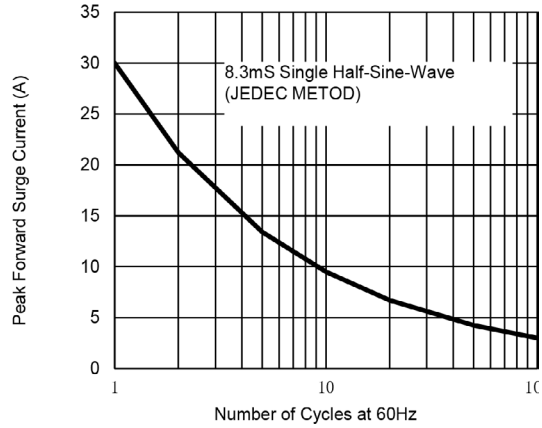


Fig. 3 - Typical Reverse Characteristics

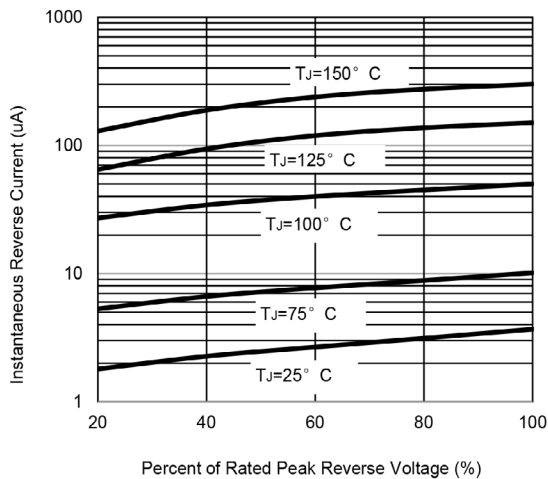


Fig. 4 - Typical Forward Characteristics

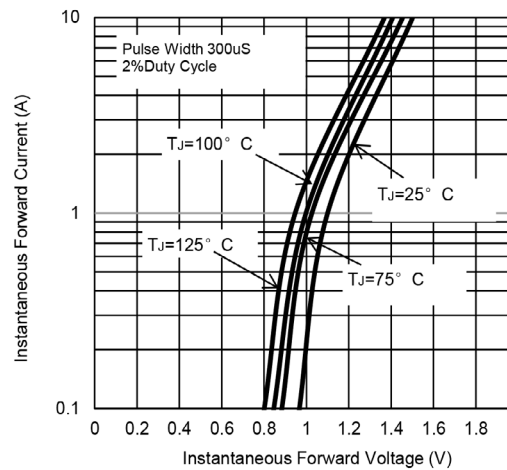
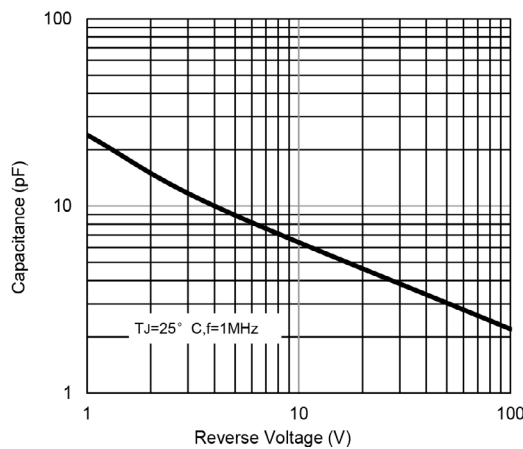


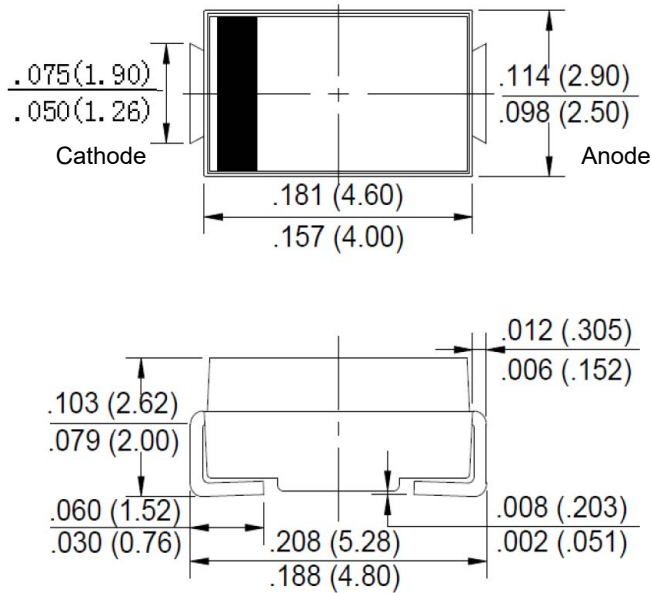
Fig. 5 - Typical Junction Capacitance



Surface Mount Glass Passivated Rectifiers



Packaging Dimensions



Dimensions : Inches (Millimetres)

Part Number Table

Description	Part Number
Rectifier Diode, 1000V, 1A, A-SMA, Surface Mount	M7

Important Notice : This data sheet and its contents (the "Information") belong to the members of the AVNET group of companies (the "Group") or are licensed to it. No licence is granted for the use of it other than for information purposes in connection with the products to which it relates. No licence of any intellectual property rights is granted. The Information is subject to change without notice and replaces all data sheets previously supplied. The Information supplied is believed to be accurate but the Group assumes no responsibility for its accuracy or completeness, any error in or omission from it or for any use made of it. Users of this data sheet should check for themselves the Information and the suitability of the products for their purpose and not make any assumptions based on information included or omitted. Liability for loss or damage resulting from any reliance on the Information or use of it (including liability resulting from negligence or where the Group was aware of the possibility of such loss or damage arising) is excluded. This will not operate to limit or restrict the Group's liability for death or personal injury resulting from its negligence. Multicomp Pro is the registered trademark of Premier Farnell Limited 2019.

Newark.com/multicomp-pro
 Farnell.com/multicomp-pro
 sg.element14.com/b/multicomp-pro

