

---

# NI-9224

# Specifications

---

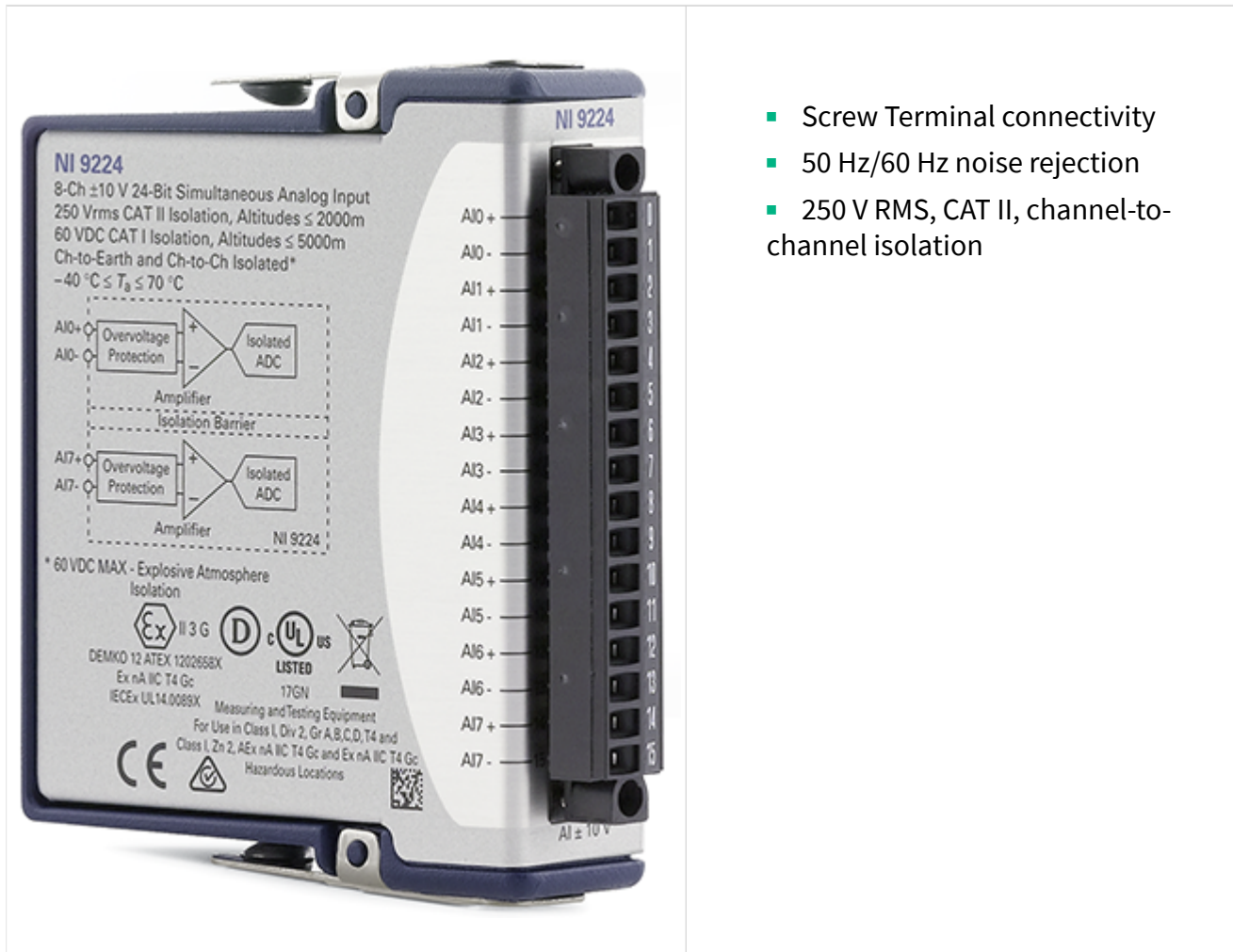
2022-07-06



# Contents



NI 9224 Datasheet.....	3
Map.....	7
NI-9224 Specifications.....	7

# NI 9224 Datasheet



- Screw Terminal connectivity
- 50 Hz/60 Hz noise rejection
- 250 V RMS, CAT II, channel-to-channel isolation

The NI-9224 is an analog input module for use in CompactDAQ or CompactRIO systems. Each channel provides a  $\pm 10$  V measurement range at a 24-bit resolution. The NI-9224 outputs 1 kS/s of data at the maximum sampling rate. Designed for both speed and accuracy, the NI-9224 is an effective general-purpose analog module because of its resolution, sample rate, and input range.

	<b>Kit Contents</b>	<ul style="list-style-type: none"> <li>• NI 9224</li> <li>• NI 9224 Getting Started Guide</li> </ul>
	<b>Accessories</b>	<ul style="list-style-type: none"> <li>• NI 9939 Screw Terminal Connector Backshell Kit</li> </ul>

## NI C Series Overview



NI provides more than 100 C Series modules for measurement, control, and communication applications. C Series modules can connect to any sensor or bus and allow for high-accuracy measurements that meet the demands of advanced data acquisition and control applications.

- Measurement-specific signal conditioning that connects to an array of sensors and signals
- Isolation options such as bank-to-bank, channel-to-channel, and channel-to-earth ground
- -40 °C to 70 °C temperature range to meet a variety of application and environmental needs
- Hot-swappable

The majority of C Series modules are supported in both CompactRIO and CompactDAQ platforms and you can move modules from one platform to the other with no modification.

## CompactRIO



CompactRIO combines an open-embedded architecture with small size, extreme ruggedness, and C Series modules in a platform powered by the NI LabVIEW reconfigurable I/O (RIO) architecture. Each system contains an FPGA for custom timing, triggering, and processing with a wide array of available modular I/O to meet any embedded application requirement.

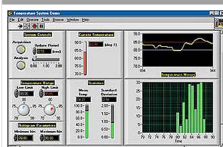
## CompactDAQ

CompactDAQ is a portable, rugged data acquisition platform that integrates connectivity, data acquisition, and signal conditioning into modular I/O for directly interfacing to any sensor or signal. Using CompactDAQ with LabVIEW, you can easily customize how you acquire, analyze, visualize, and manage your measurement data.



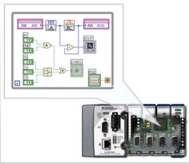
## Software

### LabVIEW Professional Development System for Windows



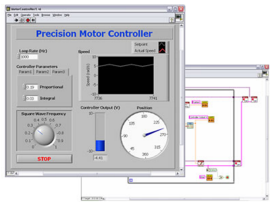
- Use advanced software tools for large project development
- Generate code automatically using DAQ Assistant and Instrument I/O Assistant
- Use advanced measurement analysis and digital signal processing
- Take advantage of open connectivity with DLLs, ActiveX, and .NET objects
- Build DLLs, executables, and MSI installers

## NI LabVIEW FPGA Module



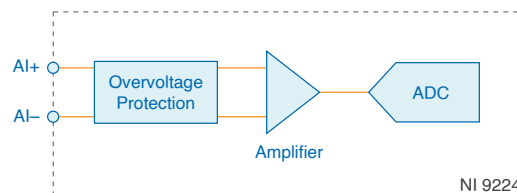
- Design FPGA applications for NI RIO hardware
- Program with the same graphical environment used for desktop and real-time applications
- Execute control algorithms with loop rates up to 300 MHz
- Implement custom timing and triggering logic, digital protocols, and DSP algorithms
- Incorporate existing HDL code and third-party IP including Xilinx IP generator functions
- Purchase as part of the LabVIEW Embedded Control and Monitoring Suite

## NI LabVIEW Real-Time Module



- Design deterministic real-time applications with LabVIEW graphical programming
- Download to dedicated NI or third-party hardware for reliable execution and a wide selection of I/O
- Take advantage of built-in PID control, signal processing, and analysis functions
- Automatically take advantage of multicore CPUs or set processor affinity manually
- Take advantage of real-time OS, development and debugging support, and board support
- Purchase individually or as part of a LabVIEW suite

## NI-9224 Input Circuitry



- Input signals on each channel are conditioned, buffered, and then sampled by an ADC.
- Each AI channel provides an independent signal path and ADC, enabling you to sample all channels simultaneously.

## Timing Modes

The NI-9224 supports high resolution, medium resolution, high speed, and medium speed timing modes. High resolution timing mode optimizes noise and rejects power line frequencies. Medium resolution timing mode has a higher sample rate when compared with high resolution, and also rejects power line frequencies. High speed timing mode optimizes sample rate and signal bandwidth, whereas medium speed timing mode has lower noise when compared to high speed timing mode.

## Map

### NI-9224 Specifications

The following specifications are typical for the range -40 °C to 70 °C unless otherwise noted. All voltages are relative to the AI- signal on each channel unless otherwise noted.



**Caution** Do not operate the NI-9224 in a manner not specified in this document. Product misuse can result in a hazard. You can compromise the safety protection built into the product if the product is damaged in any way. If the product is damaged, return it to NI for repair.

## Input Characteristics

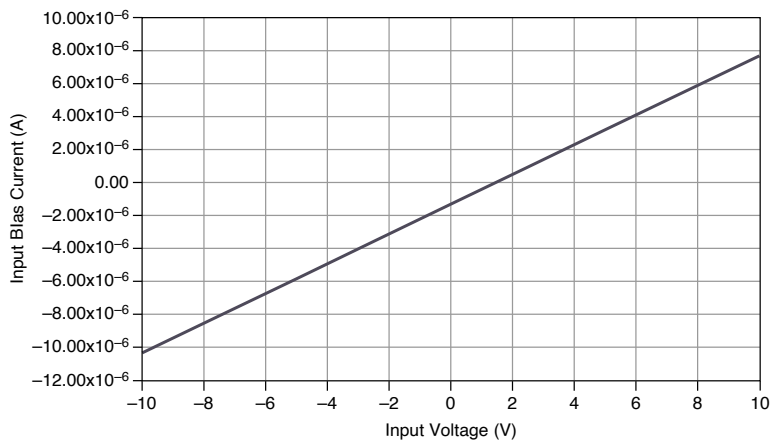
Number of channels	8 analog input channels
ADC resolution	24 bits
Type of ADC	Delta-Sigma
Sampling mode	Simultaneous

Timing Mode	Conversion Time (ms)	Sample Rate (S/s)
High resolution	500	2
Medium resolution	83.3	12
Medium speed	10	100
High speed	1	1000

Table 1. Conversion time (simultaneously sampled)

<b>Input voltage ranges, AI+ to AI-</b>	
Typical	±10.54 V
Minimum	±10.40 V
Overvoltage protection, AI+ to AI-	250 Vrms
Input coupling	DC

Figure 1. Input Bias Current



Measurement Conditions		Percent of Reading (Gain Error)	Percent of Range <sup>[1]</sup> (Offset Error)
Calibrated	Typical (25 °C, ±5 °C)	±0.11%	±0.01%
	Maximum (-40 °C to 70 °C)	±0.40%	±0.06%

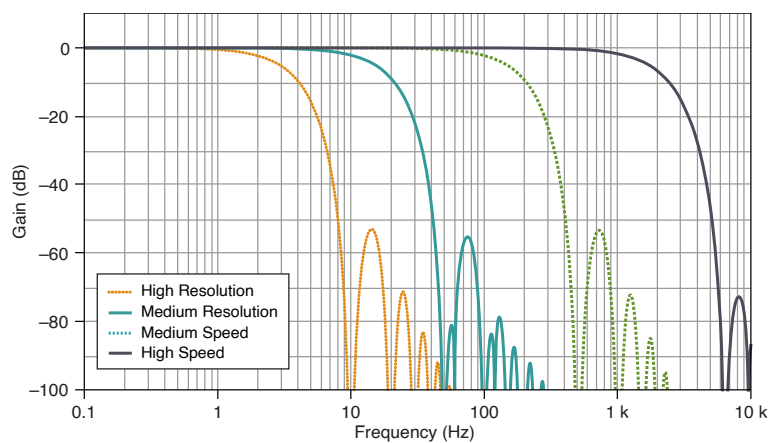
Table 2. NI-9224 Accuracy

<b>Input noise</b>	
High resolution	5 µVrms



Medium resolution	7 $\mu$ Vrms
Medium speed	14 $\mu$ Vrms
High speed	51 $\mu$ Vrms
<b>Stability</b>	
Gain drift	$\pm 17$ ppm/ $^{\circ}$ C
Offset drift	$\pm 21$ $\mu$ V/ $^{\circ}$ C
Post-calibration gain match ( $f_{in} = 100$ Hz)	$\pm 75$ mdB maximum
Phase mismatch, channel-to-channel ( $f_{in} = 100$ Hz)	$\pm 0.002$ $^{\circ}$ /Hz maximum
<b>Input delay</b>	
High resolution	199.290 ms
Medium resolution	41.619 ms
Medium speed	3.969 ms
High speed	0.323 ms

Figure 2. Filter Frequency Response

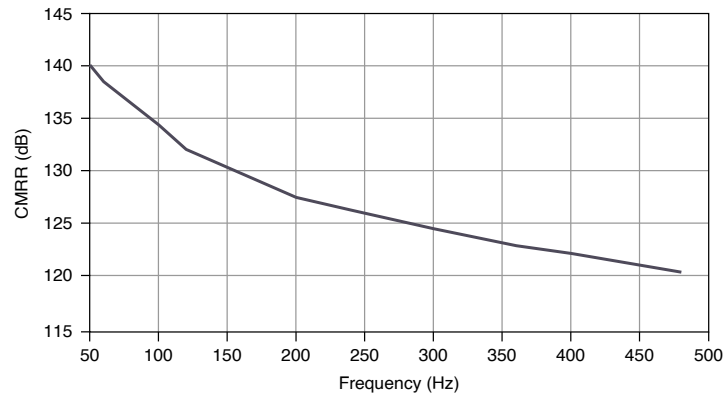


<b>Signal input bandwidth, -3 dB</b>	
High resolution	2.2 Hz
Medium resolution	11.8 Hz

Medium speed	115.3 Hz
High speed	1.3 kHz

<b>Common-Mode Rejection Ratio (CMRR), rejection of channel-to-earth common-mode voltages</b>	
High resolution ( $f_{in} = 50/60$ Hz)	160 dB
Medium resolution ( $f_{in} = 50/60$ Hz)	160 dB
Medium speed ( $f_{in} = 50/60$ Hz)	138 dB
High speed	Refer to the following figure

Figure 3. High speed CMRR (0 Hz to 500 Hz)



<b>Normal-Mode Rejection Ratio (NMRR)</b>	
High resolution ( $f_{in} = 50$ Hz $\pm$ 1 Hz or 60 Hz $\pm$ 1 Hz)	120 dB minimum
Medium resolution ( $f_{in} = 50$ Hz $\pm$ 1 Hz or 60 Hz $\pm$ 1 Hz)	80 dB minimum
Crosstalk ( $f_{in} = 1$ kHz)	-125 dB
Alias hole rejection ( $f_{in} = 614.4$ kHz)	86 dB

## Power Requirements

<b>Power consumption from chassis</b>
---------------------------------------

Active mode	930 mW maximum
Sleep mode	53 $\mu$ W maximum
<b>Thermal dissipation</b>	
Active mode	1.43 W maximum
Sleep mode	53 $\mu$ W maximum

## Physical Characteristics

### Screw-terminal wiring

Gauge	0.05 mm <sup>2</sup> to 1.5 mm <sup>2</sup> (30 AWG to 14 AWG) copper conductor wire
Wire strip length	6 mm (0.24 in.) of insulation stripped from the end
Temperature rating	90 °C, minimum
Torque for screw terminals	0.22 N · m to 0.25 N · m (1.95 lb · in. to 2.21 lb · in.)
Wires per screw terminal	One wire per screw terminal; two wires per screw terminal using a 2-wire ferrule
Ferrules	0.25 mm <sup>2</sup> to 1.5 mm <sup>2</sup>
<b>Connector securement</b>	
Securement type	Screw flanges provided
Torque for screw flanges	0.2 N · m (1.80 lb · in.)

## Safety Voltages

Connect only voltages that are within the following limits:

<b>Channel-to-channel isolation</b>	
<b>Up to 2,000 m altitude</b>	
Continuous	250 V RMS, Measurement Category II

Withstand	1,500 V RMS, verified by a 5 s dielectric test
<b>Up to 5,000 m altitude</b>	
Continuous	60 V DC, Measurement Category I
Withstand	1,000 V RMS, verified by a 5 s dielectric test
Division 2 and Zone 2 hazardous locations applications	60 V DC, Measurement Category I
<b>Channel-to-earth ground isolation</b>	
<b>Up to 2,000 m altitude</b>	
Continuous	250 V RMS, Measurement Category II
Withstand	3,000 V RMS, verified by a 5 s dielectric test
<b>Up to 5,000 m altitude</b>	
Continuous	60 V DC, Measurement Category I
Withstand	1,000 V RMS , verified by a 5 s dielectric test
Division 2 and Zone 2 hazardous locations applications	60 V DC, Measurement Category I

## Hazardous Locations

U.S. (UL)	Class I, Division 2, Groups A, B, C, D, T4; Class I, Zone 2, AEx nA IIC T4 Gc
Canada (C-UL)	Class I, Division 2, Groups A, B, C, D, T4; Ex nA IIC T4 Gc
Europe (ATEX) and International (IECEX)	Ex nA IIC T4 Gc DEMKO 12 ATEX 1202658X IECEX UL 14.0089X

## Safety Compliance and Hazardous Locations Standards

This product is designed to meet the requirements of the following electrical equipment safety standards for measurement, control, and laboratory use:

- IEC 61010-1, EN 61010-1
- UL 61010-1, CSA C22.2 No. 61010-1
- EN 60079-0, EN 60079-7
- IEC 60079-0, IEC 60079-7
- UL 60079-0, UL 60079-7
- CSA C22.2 No. 60079-0, CSA C22.2 No. 60079-7



**Note** For safety certifications, refer to the product label or the [Product Certifications and Declarations](#) section.

## Electromagnetic Compatibility

## CE Compliance

- 2014/34/EU; Potentially Explosive Atmospheres (ATEX)

## Product Certifications and Declarations

Refer to the product Declaration of Conformity (DoC) for additional regulatory compliance information. To obtain product certifications and the DoC for NI products, visit [ni.com/product-certifications](http://ni.com/product-certifications), search by model number, and click the appropriate link.

## Shock and Vibration

To meet these specifications, you must panel mount the system.

<b>Operating vibration</b>	
Random	5 g RMS, 10 Hz to 500 Hz
Sinusoidal	5 g, 10 Hz to 500 Hz
Operating shock	30 g, 11 ms half sine; 50 g, 3 ms half sine; 18 shocks at 6 orientations

## Environmental

Refer to the manual for the chassis you are using for more information about meeting these specifications.

Operating temperature (IEC 60068-2-1, IEC 60068-2-2)	-40 °C to 70 °C
Storage temperature (IEC 60068-2-1, IEC 60068-2-2)	-40 °C to 85 °C
Ingress protection	IP40
Operating humidity (IEC 60068-2-30)	10% RH to 90% RH, noncondensing
Storage humidity (IEC 60068-2-30)	5% RH to 95% RH, noncondensing
Pollution Degree	2
Maximum altitude	5,000 m


Indoor use only.

## Environmental Management


NI is committed to designing and manufacturing products in an environmentally responsible manner. NI recognizes that eliminating certain hazardous substances from our products is beneficial to the environment and to NI customers.

For additional environmental information, refer to the **Engineering a Healthy Planet** web page at [ni.com/environment](https://ni.com/environment). This page contains the environmental regulations and directives with which NI complies, as well as other environmental information not included in this document.

## EU and UK Customers

-  Waste Electrical and Electronic Equipment (WEEE)—At the end of the product life cycle, all NI products must be disposed of according to local laws and regulations. For more information about how to recycle NI products in your region, visit [ni.com/environment/weee](https://ni.com/environment/weee).

## 电子信息产品污染控制管理办法 ( 中国 RoHS )

-  中国 RoHS— NI 符合中国电子信息产品中限制使用某些有害物质指令(RoHS)。关于 NI 中国 RoHS 合规性信息，请登录 [ni.com/environment/rohs\\_china](http://ni.com/environment/rohs_china)。(For information about China RoHS compliance, go to [ni.com/environment/rohs\\_china](http://ni.com/environment/rohs_china).)

## Calibration

You can obtain the calibration certificate and information about calibration services for the NI-9224 at [ni.com/calibration](http://ni.com/calibration).

Calibration interval	2 years
----------------------	---------

<sup>1</sup> Range equals 10.54 V