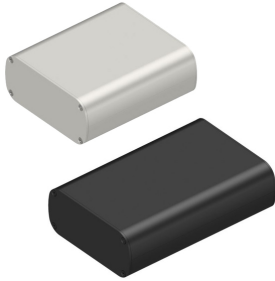


# Data sheet Product CG 109 47 80 ME



Cases>Shell-, extruded assembled cases, desk consoles and Euro cases

## contents of delivery :

1 = 2 x case shell; 2 = 2 x cover plates; 3 = mounting material <sup>[LSEP]</sup>

- universal case consisting of aluminium profiles plugged against each other <sup>[LSEP]</sup>
- lateral guide grooves for mounting 100 mm Eurocards <sup>[LSEP]</sup>
- integrated T-slots for mounting non-standard PCBs or mounting panels <sup>[LSEP]</sup>
- EMC-compliant design with electrically conductive surfaces and seals on request <sup>[LSEP]</sup>
- special productions and machinings, modifications and designs possible according to specifications <sup>[LSEP]</sup>
- other surfaces on request <sup>[LSEP]</sup>
- delivery as disassembled kit including cover plates and mounting material

## Features

case type:	Extruded mounting cases
length:	80 mm
surface:	natural colour anodised

## Technical Drawing

