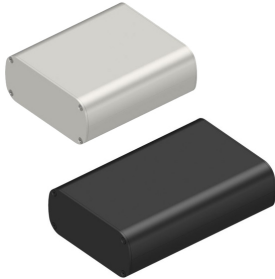


Data sheet Product CG 109 47 160 SA



Cases>Shell-, extruded assembled cases, desk consoles and Euro cases

contents of delivery :

1 = 2 x case shell; 2 = 2 x cover plates; 3 = mounting material ^[SEP]

- universal case consisting of aluminium profiles plugged against each other ^[SEP]
- lateral guide grooves for mounting 100 mm Eurocards ^[SEP]
- integrated T-slots for mounting non-standard PCBs or mounting panels ^[SEP]
- EMC-compliant design with electrically conductive surfaces and seals on request ^[SEP]
- special productions and machinings, modifications and designs possible according to specifications ^[SEP]
- other surfaces on request ^[SEP]
- delivery as disassembled kit including cover plates and mounting material

Features

case type:	Extruded mounting cases
length:	160 mm
surface:	black anodised

Technical Drawing

