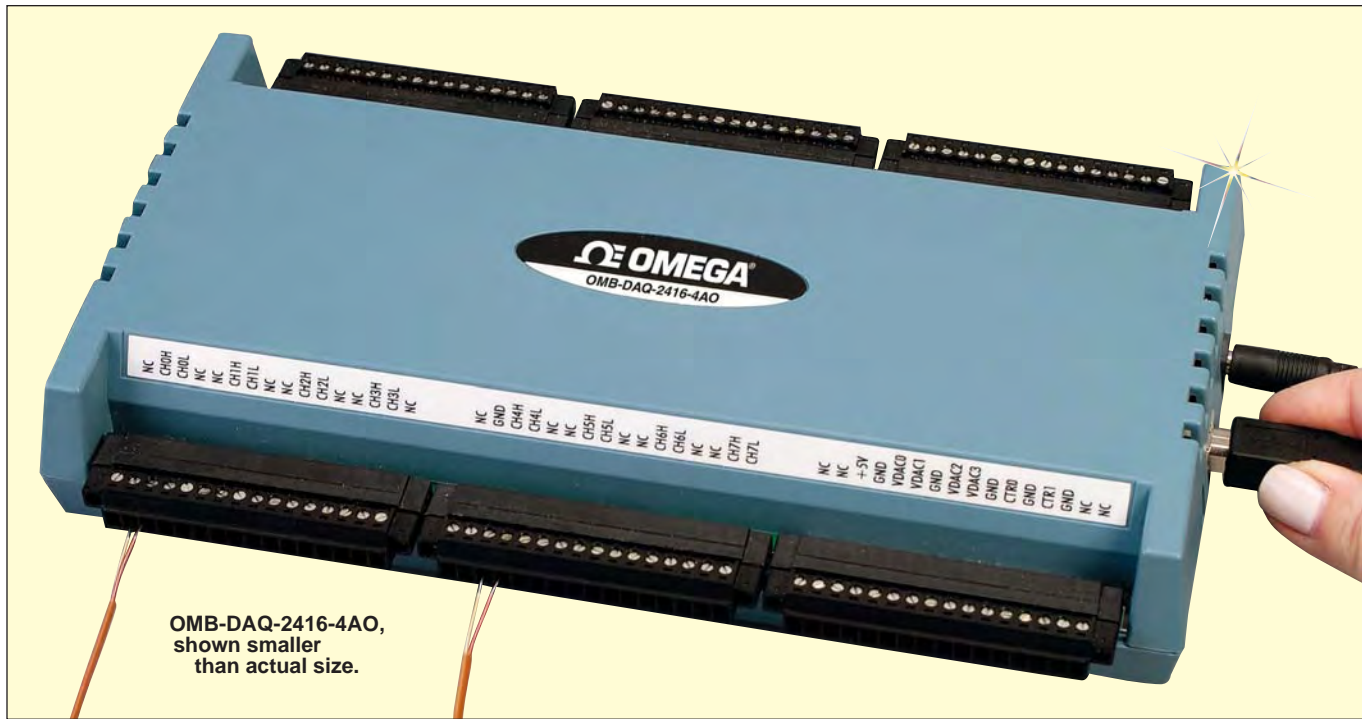




High Performance Multi-Function I/O USB Data Acquisition Modules



OMB-DAQ-2416-4AO, shown smaller than actual size.

OMB-DAQ-2416 Series



- ✓ 16 Differential or 32 Single-Ended Analogue Inputs, Expandable to 32 Differential/64 Single-Ended Channels
- ✓ 24-Bit Resolution
- ✓ Thermocouple or Voltage Input
- ✓ Nine Software-Selectable Voltage Ranges: $\pm 20V$, $\pm 10V$, $\pm 5V$, $\pm 2.5V$, $\pm 1.25V$, $\pm 0.625V$, $\pm 0.312V$, $\pm 0.156V$, and $\pm 0.078V$
- ✓ Analogue Inputs Can be Configured for Thermocouples (Up to 16 Differential Inputs)
- ✓ 1000 Samples/Sec Aggregate Throughput
- ✓ Built-In Cold Junction Compensation and Open Thermocouple Detection
- ✓ Eight Lines of High-Drive Digital I/O
- ✓ Two 32-Bit Counters

- ✓ 500V Isolation Between Signal I/Os and the Host Computer
- ✓ OMB-DAQ-2416-4AO Also Includes 4 Analogue Outputs

The OMB-DAQ-2416 and the OMB-DAQ-2416-4AO are highly accurate, multi-function measurement and control modules for the USB bus. These modules are 24-bit analogue input devices for voltage or temperature, with eight digital I/O lines and two counters. In addition to the features listed, the OMB-DAQ-2416-4AO also includes four analogue output channels with 16-bit resolution, $\pm 10V$ output range, and an aggregate 1000 Hz update rate.

System Expansion

With the addition of an optional OMB-AI-EXP32 analogue input expansion module, the number of analogue input channels on the OMB-DAQ-2416 or OMB-DAQ-2416-4AO can be doubled—increasing from 16 differential/32 single-ended inputs, to 32 differential/64 single-ended inputs. The expansion module also provides an additional 16 channels of DIO, bringing the total DIO count of the mated pair to 24.

All features of the OMB-DAQ-2416 series module are included when the OMB-AI-EXP32 is attached, including the ability to accommodate thermocouples on any input channel, built-in cold junction compensation, and open thermocouple detection. The OMB-AI-EXP32 can be plugged directly into a OMB-DAQ-2416 series module. The packaging for the OMB-DAQ-2416 series and the OMB-AI-EXP32 ensures ease of use in a variety of applications. Detachable screw terminals facilitate attaching and removing without re-wiring. The modules can easily be DIN-rail mounted for rack applications.

Software

The OMB-DAQ-2416 series modules ship with an impressive array of software, including the new TracerDAQ, a full-featured, out-of-the-box data logging, viewing, and analysis application; Universal Library™; and InstaCal™ installation, calibration, and test utility—powerful software solutions for programmers and nonprogrammers alike. The OMB-DAQ-2416 series modules operate under Microsoft Windows 2000/XP/Vista (32-bit) operating systems.

The OMB-DAQ-2416 Series data acquisition modules are supplied with TracerDAQ software which is a collection of four virtual instrument applications used to graphically display and store input data and generate output signals:

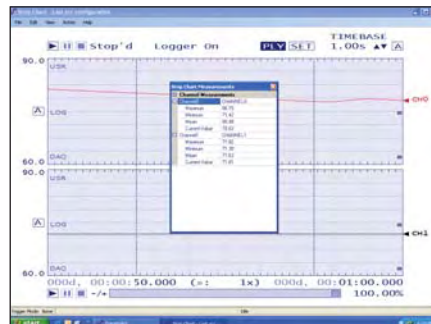
- Strip Chart—Log and graph values acquire from analogue inputs, digital inputs, temperature inputs and counter inputs
- Oscilloscope—Display values acquired from analog inputs
- Function Generator—Generate waveforms for analogue outputs

- Rate Generator—Generate waveforms for counter outputs
- TracerDAQ PRO is an enhanced version of TracerDAQ.

A comparison of some of the features included in TracerDAQ vs TracerDAQ PRO is shown below.



TracerDAQ Strip Chart.



TracerDAQ Pro Strip Chart with Measurements.

Features Comparison

Strip Chart

Feature	TracerDAQ	TracerDAQ Pro
Channel Types	Analogue input, temperature input, digital input, event counter	Analogue input, temperature input, digital input, event counter
Number of Channels	8	48
Number of Lanes	2	8
Maximum Samples per Channel	32,000	1 million
Alarm Conditions	No	Yes
Measurements Window	No	Yes
Enter Annotations	No	Yes
Software Triggering	No	Yes
Hardware Triggering	No	Yes
Time-of-Day Triggering	No	Yes
Linear Scaling	No	Yes

Oscilloscope

Feature	TracerDAQ	TracerDAQ Pro
Channel Type	Analogue input	Analogue input
Number of Channels	2	4
Measurements Window	No	Yes
Reference Channel	No	Yes
Math Channel	No	Yes

Function Generator

Feature	TracerDAQ	TracerDAQ Pro
Channel Type	Analogue output	Analogue output
Number of Channels	1	16
Waveform Types	Sine	Sine, square, triangle, flat, pulse, ramp, random, arbitrary
Duty Cycle	No	Yes
Phase	No	Yes
Gate Ratio	No	Yes
Rate Multiplier	No	Yes
Sweep (Linear and Exponential)	No	Yes

Rate Generator

Feature	TracerDAQ	TracerDAQ Pro
Channel Type	Counter output	Counter output
Number of Channels	1	20



SPECIFICATIONS A/D CONVERTER (OMB-DAQ-2416, OMB-DAQ-2416-4AO)

A/D Converter Type:
24-bit sigma delta
A/D Data Rates:
3750 samples/sec
(S/s), 2000 S/s,
1000 S/s, 500 S/s,
100 S/s, 60 S/s,
50 S/s, 25 S/s, 10 S/s,
5 S/s, 2.5 S/s

A/D Throughput to Host Memory (Software Selectable)

Number of Channels	Throughput (Hz)
1	2.50 to 1102.94
2	1.25 to 551.47
3	0.83 to 367.65
4	0.62 to 275.74
5	0.50 to 220.59
6	0.42 to 183.82
7	0.36 to 157.56
8	0.31 to 137.87
9	0.28 to 122.55
10	0.25 to 110.29
11	0.23 to 100.27
12	0.21 to 91.91
13	0.19 to 84.84
14	0.18 to 78.78
15	0.17 to 75.53
16	0.16 to 68.93

Input Isolation: 500 Vdc min between field wiring and USB interface

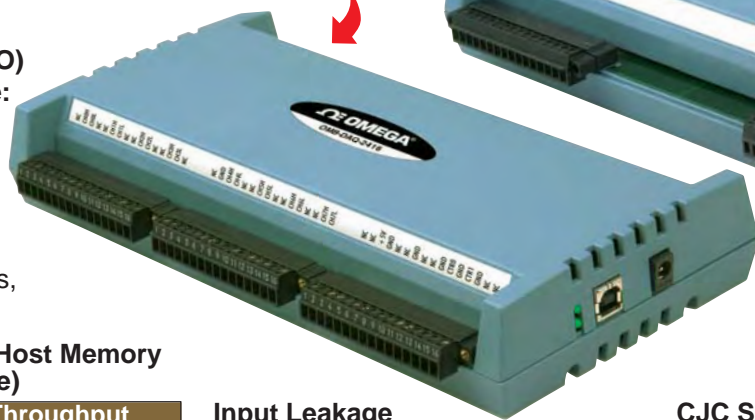
Common Mode Rejection:
Thermocouple mode, 110 dB;
voltage mode, 90 dB

ANALOGUE INPUTS (OMB-DAQ-2416, OMB-DAQ-2416-4AO, OMB-AI-EXP32)

Number of Channels: 16 differential/32 single-ended (thermocouples require differential mode) on OMB-DAQ-2416 or OMB-DAQ-2416-4AO. The OMB-AI-EXP32 is a multiplexer-based channel expansion module that adds an additional 16 differential/32 single ended channels.

Maximum Input Voltage: $\pm 30V$ (power on), $\pm 10V$ (power off)
Input Impedance: $2 G\Omega$ (power on), 390Ω (power off)

OMB-DAQ-2416, shown smaller than actual size.



OMB-AI-EXP32, shown smaller than actual size.



Input Leakage

Current: $\pm 10.6 nA$ (OMB-DAQ-2416, OMB-DAQ-2416-AO); $\pm 20 nA$ (OMB-AI-EXP32); $\pm 1\mu A$ max for input voltage $> \pm 30 V$

Input Capacitance: 590 pf
Crosstalk: 100 dB adjacent channels

Channel Gain Queue: Up to 64 elements, software configurable channel and range

Warm-Up Time:

45 minutes max (OMB-DAQ-2416, OMB-DAQ-2416-4AO); 15 minutes max (OMB-AI-EXP32)

Open Thermocouple Detect:

Automatically enable when a channel is configured for a thermocouple sensor.

CJC Sensor Accuracy:

$\pm 0.15^\circ C$ typical (15 to $35^\circ C$);
 $\pm 0.5^\circ C$ max (0 to $55^\circ C$)

DC Voltage Input Ranges

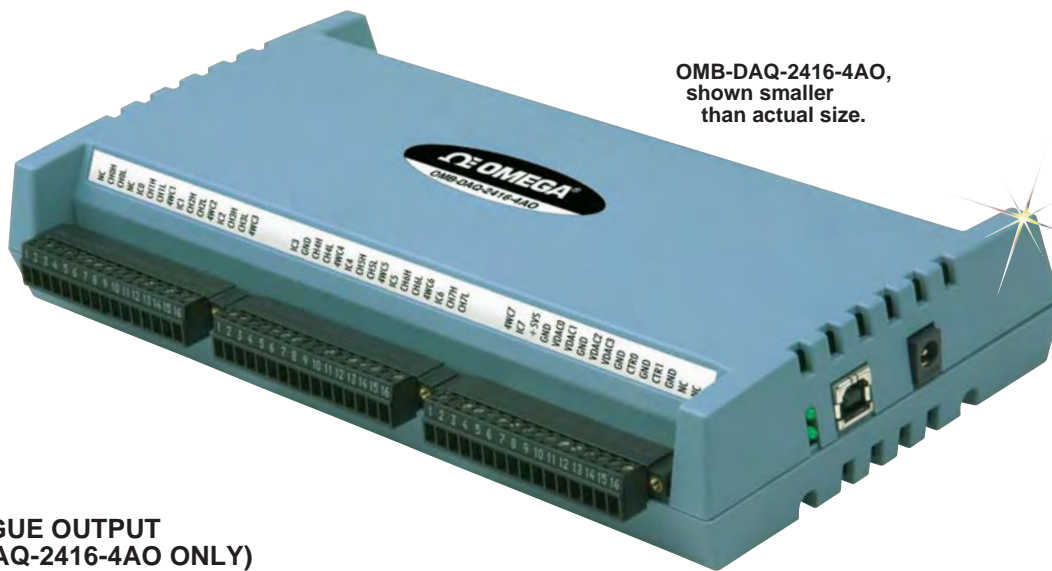
Range	Accuracy* (Absolute, μV)
$\pm 20V$	857.600
$\pm 10V$	421.600
$\pm 5V$	210.800
$\pm 2.5V$	83.000
$\pm 1.25V$	48.050
$\pm 0.625V$	28.775
$\pm 0.3125V$	24.500
$\pm 0.15625V$	15.856
$\pm 0.078125V$	33.547

* Dependent on A/D data rate.

Compatible Thermocouple Input Types

Type	Temperature Range	Accuracy* (Typical, $^\circ C$)
J	-210 to $1200^\circ C$ (-346 to $2192^\circ F$)	$\pm 1.416 @ -210^\circ C$ $\pm 0.469 @ 0^\circ C$ $\pm 1.456 @ 1200^\circ C$
K	-270 to $1372^\circ C$ (-454 to $2502^\circ F$)	$\pm 1.699 @ -210^\circ C$ $\pm 0.526 @ 0^\circ C$ $\pm 2.022 @ 1372^\circ C$
T	-270 to $400^\circ C$ (-454 to $752^\circ F$)	$\pm 1.676 @ -200^\circ C$ $\pm 0.558 @ 0^\circ C$ $\pm 0.595 @ 400^\circ C$
E	-270 to $1000^\circ C$ (-454 to $1832^\circ F$)	$\pm 1.352 @ -200^\circ C$ $\pm 0.551 @ 0^\circ C$ $\pm 1.211 @ 1000^\circ C$
R	-50 to $1768^\circ C$ (-58 to $3214^\circ F$)	$\pm 3.133 @ -50^\circ C$ $\pm 1.424 @ 250^\circ C$ $\pm 2.347 @ 1768^\circ C$
S	-50 to $1768^\circ C$ (-58 to $3214^\circ F$)	$\pm 2.930 @ -50^\circ C$ $\pm 1.468 @ 250^\circ C$ $\pm 2.597 @ 1768^\circ C$
B	0 to $1820^\circ C$ (32 to $3308^\circ F$)	$\pm 3.956 @ 250^\circ C$ $\pm 1.743 @ 700^\circ C$ $\pm 1.842 @ 1820^\circ C$
N	-270 to $1300^\circ C$ (-454 to $2372^\circ F$)	$\pm 2.030 @ -200^\circ C$ $\pm 0.659 @ 0^\circ C$ $\pm 1.600 @ 1300^\circ C$

* Includes CJC measurement error. Dependent on A/D data rate.



OMB-DAQ-2416-4AO,
shown smaller
than actual size.

ANALOGUE OUTPUT (OMB-DAQ-2416-4AO ONLY)

Number of Channels: 4

Resolution: 16-bit

Range: ± 10 Vdc

Absolute Accuracy: ± 16.0 LSB

Relative Accuracy: ± 4.0 LSB

Differential Non-Linearity:

± 0.25 LSB typical; ± 1 LSB max

Current: ± 3.5 mA max

Power On and Reset State: DACs cleared to zero scale, $0V \pm 50$ mV

Noise: 30μ V_{RMS}

Settling Time: 45μ s

Slew Rate: 1.0 V/ μ s

Throughput: Single channel, 1000 S/s (max, system dependent); multiple channels, 1000 S/s divided by the number of channels (max, system dependent)

ANALOGUE INPUT/OUTPUT CALIBRATION

Recommended Warm-Up Time: 45 minutes max

Calibration: Firmware calibration

Calibration Interval: 1 year

Calibration Reference: 10.000V, ± 5 mV max; actual measured values stored in EEPROM

Tempco: 5 ppm/ $^{\circ}$ C max

Long Term Stability:

30 ppm/1000 hrs

DIGITAL INPUTS

(OMB-DAQ-2416,
OMB-DAQ-2416-4AO,
OMB-AI-EXP32)

Number of Digital I/O

Channels: 8 (OMB-DAQ-2416,
OMB-DAQ-2416-4AO);

16 (OMB-AI-EXP32)

Configuration: Each DIO bit can be independently read from (DIN) or written to (DOUT). The DIN bits can be read at any time whether the DOUT is active or tri-stated.

Voltage Range: 0 to 15 Vdc

Type: CMOS (Schmitt trigger)

Characteristics: 47 k Ω pull-up/pull-down resistor, 28 k Ω series resistor

Maximum Input Voltage Range:

0 to 20 Vdc max (power on/off, relative to DGND)

Pull-Up/Pull-Down Configuration:

All pins pulled up to 5V via individual 47 k Ω resistors (default configuration); pull-down capability is available by moving internal jumper

Transfer Rate (Software Paced):

500 port reads or single bit reads per second typical

Input High Voltage:

1.3V min, 2.2V max

Input Low Voltage:

1.5V max, 0.6V min

Schmitt Trigger Hysteresis:

0.4V min, 1.2V max

DIGITAL OUTPUTS

(OMB-DAQ-2416,
OMB-DAQ-2416-4AO,
OMB-AI-EXP32)

Number of Digital I/O Channels:

8 (OMB-DAQ-2416,
OMB-DAQ-2416-4AO);

16 (OMB-AI-EXP32)

Configuration: Each DIO bit can be independently read from (DIN) or written to (DOUT). The DIN bits can be read at any time whether the DOUT is active or tri-stated.

Characteristics: 47 k Ω pull-up, open drain DMOS transistor

Pull-Up Configuration: All pins pulled up to 5V via individual 47 k Ω resistors by default

Transfer Rate (Software Paced):

500 port writes or single bit writes per second typical

Output Voltage Range: 0 to 5V

(no external pull-up resistor, internal 47 k Ω resistors connected to

5V by default); 0 to 15V max

Drain to Source Breakdown

Voltage: 50V min

Off-State Leakage Current: 0.1 μ A

Sink Current Capability: 150 mA

max continuous per output pin;

150 mA max continuous for all eight channels

DMOS Transistor On-Resistance

(Drain to Source): 4 Ω

COUNTERS

(OMB-DAQ-2416,
OMB-DAQ-2416-4AO)

Number of Channels: 2

Resolution: 32-bit

Counter Type: Event counter

Input Type: Schmitt trigger, rising edge triggered

Counter Read/Write Rates

(Software Paced): 500 reads

or writes per second (system dependent)

Input Characteristics: 562 k Ω

pull-up resistor to 5V, 10 k Ω series resistor

Input Voltage Range: ± 15 V max

Maximum Input Voltage Range:

± 20 V max (power on/off)

Input High Voltage: 1.3V min, 2.2V max

Input Low Voltage: 1.5V max,

0.6V min

Schmitt Trigger Hysteresis:

0.4 min, 1.2V max

Input Bandwidth (-3dB): 1 MHz

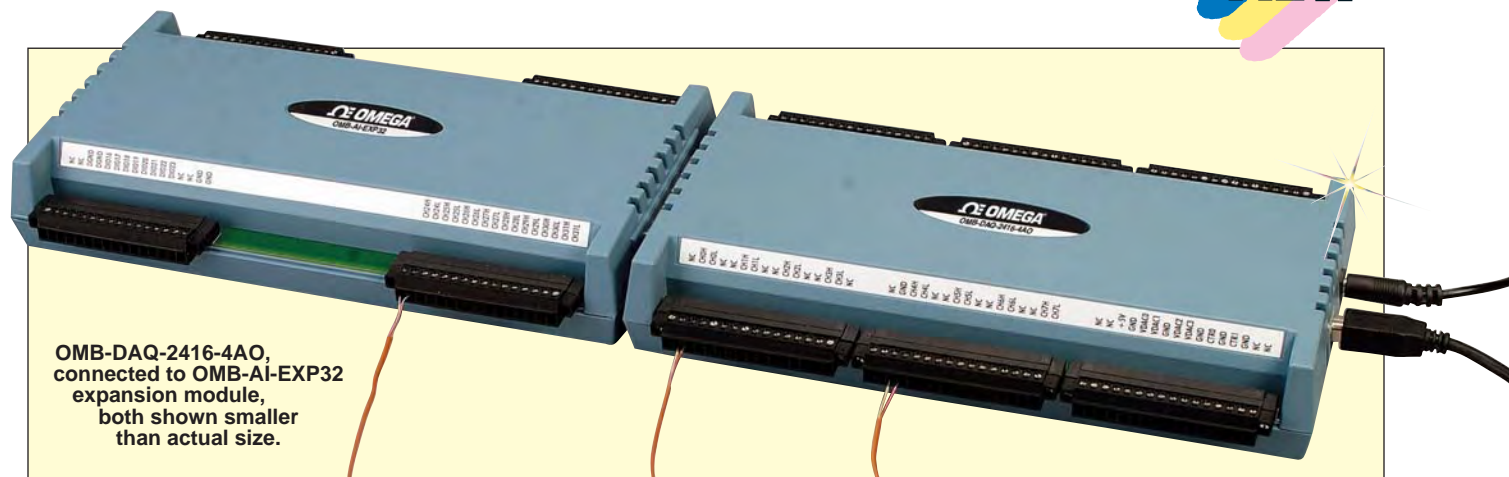
Input Capacitance: 25 pf

Input Leakage Current: ± 120 nA

Input Frequency: 1 MHz max

High Pulse Width: 500 ns min

Low Pulse Width: 500 ns min



OMB-DAQ-2416-4AO, connected to OMB-AI-EXP32 expansion module, both shown smaller than actual size.

GENERAL OMB-DAQ-2416, OMB-DAQ-2416-4AO DATA ACQUISITION MODULES

Memory: EEPROM

Microcontroller:

One high-performance 8-bit RISC microcontroller with USB interface (non-isolated); one high-performance 16-bit RISC microcontroller for measurements (isolated)

Power: 5V \pm 5%, 340 mA supplied by included AC adaptor (OMB-DAQ-2416-ADAP)

User Output Voltage: 5V, 10 mA max available (pin 35)

Isolation: 500 Vdc min measurement system to PC

USB Device Type: USB 2.0 (full-speed)

Device Compatibility:

USB 1.1, USB 2.0

USB Cable Length: 5 m max

Dimensions:

245 L x 146 W x 50 mm H (9.6 x 5.7 x 2.0")

Input Connections: Detachable screw terminal blocks (accept 16 to 30 AWG wire)

Operating Temperature:

0 to 50°C, 0 to 90% RH non-condensing

Storage Temperature:

-40 to 85°C

Weight: 463 g

OMB-AI-EXP32 EXPANSION MODULE

User Output Voltage:

+5 V, 10 mA max available (pin 19)

Dimensions:

245 L x 146 W x 50 mm H (9.6 x 5.7 x 2.0")

Input Connections: Detachable screw terminal blocks (accept 16 to 30 AWG wire)

Operating Temperature:

0 to 50°C, 0 to 90% RH non-condensing

Storage Temperature:

-40 to 85°C

Weight: 400 g



OMEGACARESM extended warranty program is available for models shown on this page. Ask your sales representative for full details when placing an order. OMEGACARESM covers parts, labor and equivalent loaners.

MOST POPULAR MODELS HIGHLIGHTED!

To Order (Specify Model Number)		
Model No.		Description
OMB-DAQ-2416		Multi-function I/O USB data acquisition module
OMB-DAQ-2416-4AO		Multi-function I/O USB data acquisition module with 4 analogue outputs
OMB-AI-EXP32		Expansion module with frequency measurement and digital I/O
OMB-DAQ-2416-ADAP		Spare USA AC adaptor
OMB-DAQ-2416-PL-AU		Spare Australian plug for AC adaptor
OMB-DAQ-2416-PL-EU		Spare European plug for AC adaptor
OMB-DAQ-2416-PL-UK		Spare UK plug for AC adaptor
OMB-CA-179-1		Spare USB cable, 1 m
OMB-CA-179-3		USB cable, 3 m
OMB-CA-179-5		USB cable, 5 m
OMB-ACC-202		DIN rail adaptor kit for OMB-DAQ-2416 Series
OMB-ACC-216		Spare detachable screw terminal kit (set of 6 screw terminal blocks) for OMB-DAQ-2416 and OMB-DAQ-2416-4AO
SWD-TRACERDAQ-PRO		TracerDAQ Pro software

Comes complete with AC adaptor, 2 m (6') USB cable, set of international power plugs (Australian, European, UK), quick start guide, software, and operator's manual on CD.

Ordering Example: OMB-DAQ-2416-4AO, multi-function I/O USB data acquisition module with 4 analogue outputs, OMEGACARESM 1-year extended warranty for OMB-DAQ-2416-4AO, (adds 1 year to standard 1-year warranty), OMB-AI-EXP32, expansion module and OMEGACARESM 1 year extended warranty for OMB-AI-EXP32, (adds 1 year to standard 1 year warranty).

omega.co.uk[®]

Your One-Stop Source for Process Measurement and Control!

Freephone 0800 488 488 | International +44(0) 161 777 6622 | Fax +44(0) 161 777 6622 | Sales@omega.co.uk

www.omega.co.uk



UNITED STATES

www.omega.com

1-800-TC-OMEGA
Stamford, CT.

UNITED KINGDOM

www.omega.co.uk

Manchester, England
0800-488-488
+44-(0)161-777-6611

CANADA

www.omega.ca

Laval(Quebec)
1-800-TC-OMEGA

FRANCE

www.omega.fr

0800-466-342

GERMANY

www.omega.de

Deckenfronn, Germany
0800-8266342

BENELUX

www.omega.nl

0800-099-33-44



More than 100,000 Products Available!

• Temperature

Calibrators, Connectors, General Test and Measurement Instruments, Handheld Instruments for Temperature Measurement, Ice Point References, Indicating Labels, Crayons, Cements and Lacquers, Infrared Temperature Measurement Instruments, Recorders, Relative Humidity Measurement Instruments, PT100 Probes, PT100 Elements, Temperature & Process Meters, Timers and Counters, Temperature and Process Controllers and Power Switching Devices, Thermistor Elements, Probes and Assemblies, Thermocouples, Thermowells and Head and Well Assemblies, Transmitters, Thermocouple Wire, RTD Probes

• Flow and Level

Air Velocity Indicators, Doppler Flowmeters, Level Measurement, Magnetic Flowmeters, Mass Flowmeters, Pitot Tubes, Pumps, Rotameters, Turbine and Paddle Wheel Flowmeters, Ultrasonic Flowmeters, Valves, Variable Area Flowmeters, Vortex Shedding Flowmeters

• pH and Conductivity

Conductivity Instrumentation, Dissolved Oxygen Instrumentation, Environmental Instrumentation, pH Electrodes and Instruments, Water and Soil Analysis Instrumentation

• Data Acquisition

Communication Products and Converters, Data Acquisition and Analysis Software, Data Loggers Plug-in Cards, Signal Conditioners, USB, RS232, RS485, Ethernet and Parallel Port Data Acquisition Systems, Wireless Transmitters and Receivers

• Pressure, Strain and Force

Displacement Transducers, Dynamic Measurement Force Sensors, Instrumentation for Pressure and Strain Measurements, Load Cells, Pressure Gauges, Pressure Reference Section, Pressure Switches, Pressure Transducers, Proximity Transducers, Regulators, Pressure Transmitters, Strain Gauges, Torque Transducers, Valves

• Heaters

Band Heaters, Cartridge Heaters, Circulation Heaters, Comfort Heaters, Controllers, Meters and Switching Devices, Flexible Heaters, General Test and Measurement Instruments, Heater Hook-up Wire, Heating Cable Systems, Immersion Heaters, Process Air and Duct, Heaters, Radiant Heaters, Strip Heaters, Tubular Heaters