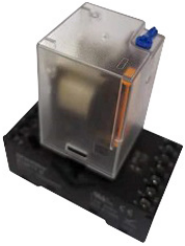


# General Purpose Relay

**multicomp** PRO

**RoHS  
Compliant**



## Features

- 2 pole 3 pole contact load 10A
- With non-polarity LED integrated in relay
- With lockable test button and inspection window
- Identification of coils through test button colour (AC red/DC blue)

## Characteristics

Contact	Configuration	3C
	Rated current / Rated voltage	10A/250VAC 30VDC (resistive RES); 7A/250VAC 30VDC (perceptual GEN)
	Max. switching capacity (resistive)	2500VA, 300W
	Initial contact resistance	≤50mΩ
	Material	Ag alloy
	Electrical durability	≥105Cycles(1800 Ops/h)
	Mechanical durability	≥2000 x 10 <sup>4</sup> Cycles (18000 Ops/h)
Pick-up voltage (23°C) (Rated voltage)		≤80%
Drop-out voltage (23°C) (Rated voltage)		DC:≥10%, AC:≥30% 50/60Hz
Maximum voltage (23°C) (Rated voltage)		110%
Insulation resistance		≥100MΩ (500V DC)
Coil operating power	DC (W)	approx. 1.5
	AC (VA)	approx. 2.7
Operate time		≤30ms
Release time (at nominal voltage)		≤20ms
Initial breakdown voltage	Between open contacts	1000V AC/1min (leakage current 1mA)
	Between contacts and coil	2500V AC/1min (leakage current 1mA)
	Between poles	2500V AC/1min (leakage current 1mA)
Insulation characteristics IEC 60664 UL840	Rated voltage	250V AC
	Pollution level	3
	Over voltage level	III
Impulse withstand voltage (waveform: 1.2/50μs)		4000V
Protection level		IP50
Storage temperature/ humidity		-55 ~ +85°C / ≤85%RH (18 months)*
Working temperature/ humidity		-25 ~ +55°C / 5%~85%RH (No condensation)
Air pressure		86~106KPa
Shock Resistance		10G (half-sine shock pulse: 11ms)
Vibration Resistance		10~55Hz double-amplitude:1mm
Mounting		plug in
Unit weight		approx. 85g

\* If the storage exceeds 18 months (calculated from the factory date), it is recommended to re-test the parameters before using.

Newark.com/multicomp-pro  
Farnell.com/multicomp-pro  
sg.element14.com/b/multicomp-pro

**multicomp** PRO

# General Purpose Relay

**multicomp** PRO

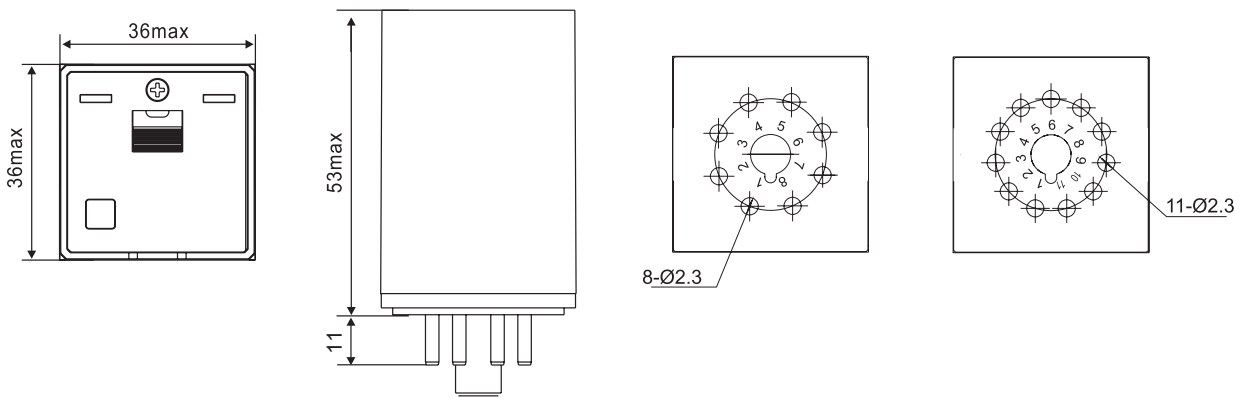
## Coil Specifications (23°C)

Nominal Voltage : 24V DC  
 Coil Resistance : 430Ω  
 Nominal Voltage : 24V DC  
 Coil Resistance : 62.5Ω

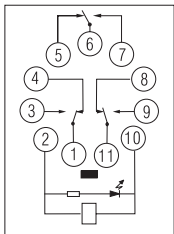
### Note:

Coil resistance: under coil voltage 110V are measured with tolerance of ±10%Ω, above 110V with tolerance of ±15%Ω.

## Diagram



## Wiring Diagram



- ⑩ ② : A1, A2
- ① ⑥ ⑪ : COM
- ③ ⑦ ⑨ : NO
- ④ ⑤ ⑧ : NC

## Part Number Table

Description	Part Number
Power Relay, 3 form C, 24V DC, 10A, Plug In	MP010039

Dimensions : Millimetres

**Important Notice :** This data sheet and its contents (the "Information") belong to the members of the AVNET group of companies (the "Group") or are licensed to it. No licence is granted for the use of it other than for information purposes in connection with the products to which it relates. No licence of any intellectual property rights is granted. The Information is subject to change without notice and replaces all data sheets previously supplied. The Information supplied is believed to be accurate but the Group assumes no responsibility for its accuracy or completeness, any error in or omission from it or for any use made of it. Users of this data sheet should check for themselves the Information and the suitability of the products for their purpose and not make any assumptions based on information included or omitted. Liability for loss or damage resulting from any reliance on the Information or use of it (including liability resulting from negligence or where the Group was aware of the possibility of such loss or damage arising) is excluded. This will not operate to limit or restrict the Group's liability for death or personal injury resulting from its negligence. Multicomp Pro is the registered trademark of Premier Farnell Limited 2019.

Newark.com/multicomp-pro  
 Farnell.com/multicomp-pro  
 sg.element14.com/b/multicomp-pro

**multicomp** PRO