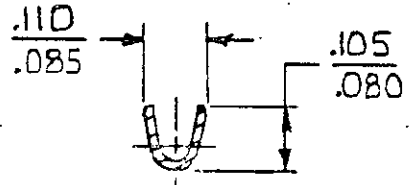
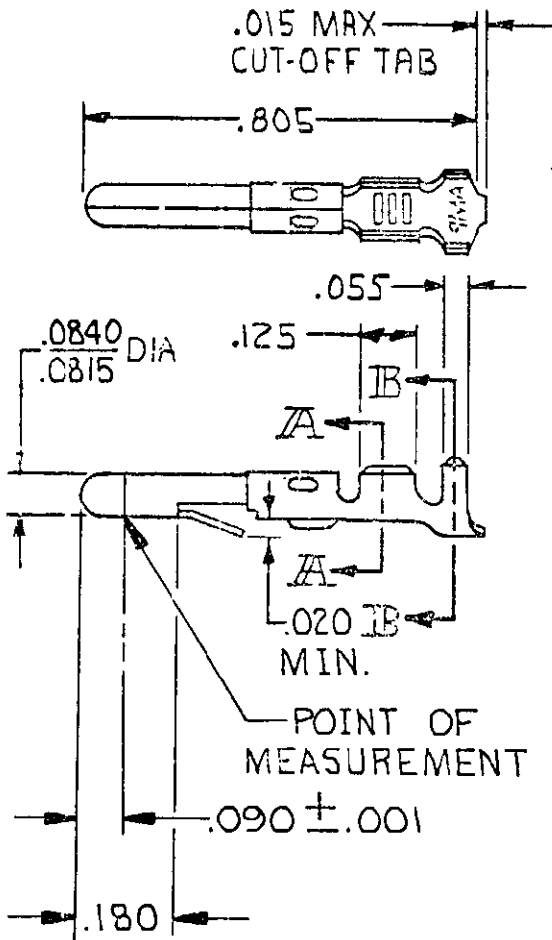
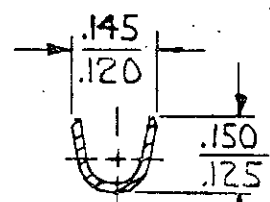


© COPYRIGHT 1965 BY AMP INCORPORATED, HARRISBURG, PA. ALL INTERNATIONAL RIGHTS RESERVED. AMP INCORPORATED PRODUCTS COVERED BY U.S. AND FOREIGN PATENTS AND /OR PATENTS PENDING.

| REVISIONS |                         |         |                   |     |
|-----------|-------------------------|---------|-------------------|-----|
| LTR       | DESCRIPTION             | DATE    | APPROVED          | P F |
| N         | REV PER CM-1734         | 8-17-88 | <del>PKC</del> RS |     |
| P         | REVISED PER CM-3285     | 2-12-91 | <del>PKC</del> RS |     |
| R         | OBSOLETE -2 PER CM 2708 | 1-11-93 | <del>TB</del> RS  |     |
| S         | REV PER EC 0730-0142-94 | 8-15-94 | <del>RV</del> RS  |     |



SECT. A-A



SECT. B-B

1 .000030 GOLD INSIDE WIRE BARREL & ON TIP OF PIN; REMAINDER OF CONTACT IS NICKEL PLATED.

2 .000050 NICKEL OVER ENTIRE CONTACT WITH .000030 GOLD OVER MATING AREA.

|         |   |              |          |
|---------|---|--------------|----------|
| GOLD    | 2 | .012 PH. BRZ | 60613 -6 |
| GOLD    | 1 | BRASS        | -5       |
| PRE-TIN |   | PH. BRZ      | -4       |
| PRE-TIN |   | .012 BRASS   | 60618-1  |
| FINISH  |   | MATERIAL     | PART NO  |

UNLESS OTHERWISE SPECIFIED DIMENSIONS ARE IN INCHES. TOLERANCES ON: DECIMALS ±.015 ANGLES ±

CONTRACT NO  
DR M. FEHER 11-26-79  
CHK D. Heide 1/4/80



MATERIAL  
SEE TABLE

INSULATION DIA .100 MAX  
WIRE RANGE 24-18 AWG.

NAME  
PIN, LOOSE PIECE, COMMERCIAL MATE-N-LOK

FINISH  
SEE TABLE

SIZE A

CODE IDENT NO 00779

DRAWING NO 60618