

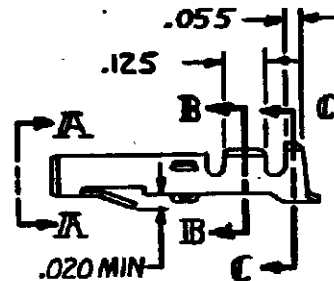
© COPYRIGHT 1964 BY AMP INCORPORATED, HARRISBURG, PA. ALL INTERNATIONAL RIGHTS RESERVED. AMP INCORPORATED PRODUCTS COVERED BY U.S. AND FOREIGN PATENTS AND /OR PATENTS PENDING.

REVISIONS

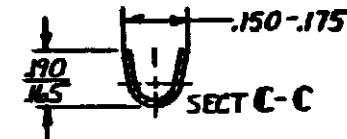
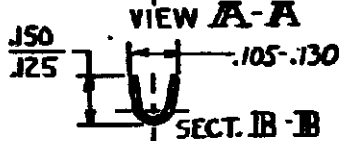
LTR	DESCRIPTION	DATE	APPROVED
N	REMOVED FROM 60615 PER M-5605	1-2-80	MSF/SH.
P	REV. FINISH ON-5 M-6033	10-1-80	MSF/SH.
R	REV. FINISH ON-7 M-6255	1-28-81	MSF/SH.
S	REV PER ECN AG-25	10-11-83	TEB MSF
S1	RESTORED	10/10/85	BO/RS
T	OBS. -2, -3 & -6 PER CM-862	9-3-87	TEB

.008 MAX CUT-OFF TAB FOR -6 ONLY

.695 .015 MAX CUT-OFF TAB



.078/.081 DIA.



▲ NICKEL ON ENTIRE TERMINAL WITH .00030 GOLD OVER INSIDE OF MATING AREA AND WIRE BARREL.

GOLD	▲ .012 PH. BRZ.	60619-7
		↑
GOLD	▲ .012 BRASS	-5
TIN	.012 PH. BRZ	-4
		↓
TIN	.012 BRASS	60619-1
FINISH	MATERIAL	PART NO

UNLESS OTHERWISE SPECIFIED DIMENSIONS ARE IN INCHES. TOLERANCES ON: DECIMALS ± .015 ANGLES ±

CONTRACT NO

DR M. FEHER 11-14-79

CHK C.S. Heide 1/4/80

APPD W. Dolan 1-7-80

APPD

MATERIAL

SEE TABLE

FINISH

SEE TABLE

WIRE RANGE

20-14 AWG

INSULATION DIA

.130 MAX

AMP INCORPORATED
Harrisburg, Pa.

NAME

SOCKET, LOOSE PIECE,
COMMERCIAL MATE-N-LOK

SIZE

A

CODE IDENT. NO

00779

DRAWING NO

60619

SCALE

SHEET