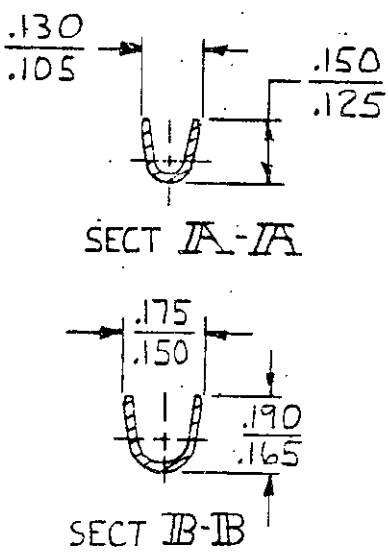
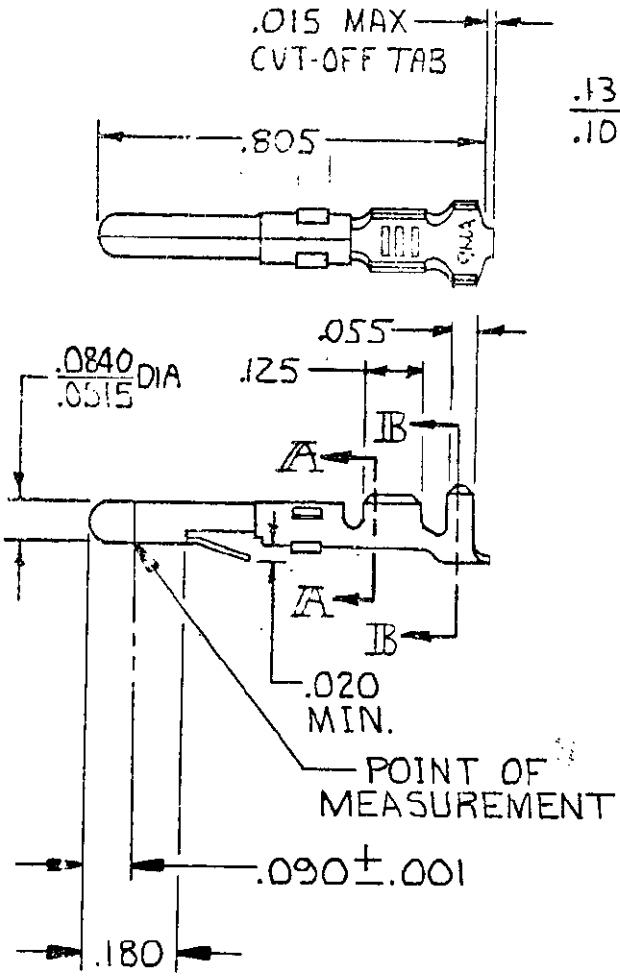


© COPYRIGHT 1965 BY AMP INCORPORATED, HARRISBURG, PA. ALL INTERNATIONAL RIGHTS RESERVED. AMP INCORPORATED PRODUCTS COVERED BY U.S. AND FOREIGN PATENTS AND /OR PATENTS PENDING.

| REVISIONS |                         |         |                   |
|-----------|-------------------------|---------|-------------------|
| LTR       | DESCRIPTION             | DATE    | APPROVED          |
| N         | REV PER CM-1734         | 8-17-88 | PKC <del>RS</del> |
| P         | REVISED PER CM-3285     | 2-12-91 | PKC <del>RS</del> |
| R         | REV PER EC 0730-4265-93 | 4-4-94  | RV <del>RS</del>  |
| S         | REV PER EC 0730-0142-94 | 8-15-94 | RV <del>RS</del>  |

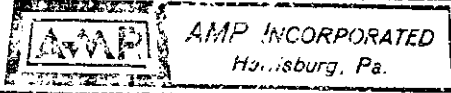


⚠ .000030 GOLD INSIDE WIRE BARREL & ON TIP OF PIN; REMAINDER OF CONTACT IS NICKEL PLATE.

|         |   |            |         |
|---------|---|------------|---------|
| GOLD    | ⚠ | .012 BRASS | 60620-5 |
| PRE-TIN | ↑ | PIL BRZ    | -4      |
|         |   |            |         |
| PRE-TIN | ↓ | .012 BRASS | 60620-1 |
| FINISH  |   | MATERIAL   | PART NO |

UNLESS OTHERWISE SPECIFIED DIMENSIONS ARE IN INCHES. TOLERANCES ON: DECIMALS ± .015 ANGLES ±

|             |                           |
|-------------|---------------------------|
| CONTRACT NO |                           |
| DR          | M. FEHER 11-26-79         |
| CHK         | <i>[Signature]</i> 11/90  |
| APPD        | <i>[Signature]</i> 1-7-81 |
| APPD        |                           |



|          |           |
|----------|-----------|
| MATERIAL | SEE TABLE |
| FINISH   | SEE TABLE |

|                |           |
|----------------|-----------|
| INSULATION DIA | .130 MAX  |
| WIRE RANGE     | 20-14 AWG |

|       |               |            |   |  |  |
|-------|---------------|------------|---|--|--|
| NAME  |               |            | PIN, LOOSE PIECE, COMMERCIAL MATE-N-LOK |  |  |
| SIZE  | CODE IDENT NO | DRAWING NO |   |  |  |
| A     | 00779         | 60620      |   |  |  |
| SCALE |               | SHEET      |   |  |  |