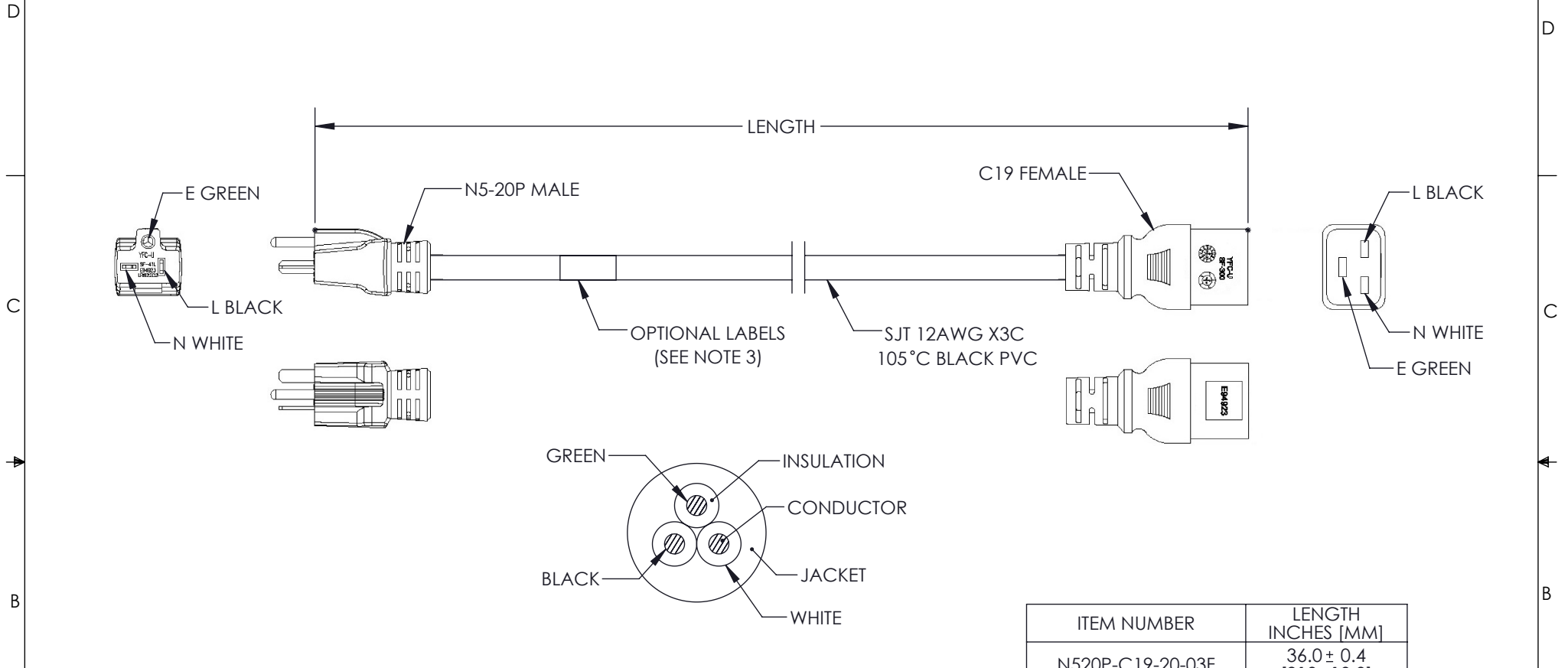


THE INFORMATION CONTAINED IN THIS DRAWING IS THE SOLE PROPERTY OF L-COM, INC. ANY REPRODUCTION IN PART OR WHOLE WITHOUT THE WRITTEN PERMISSION OF L-COM, INC. IS PROHIBITED.


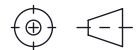
| REVISIONS | | | |
|-----------|-----------------|------------|------------|
| REV | DESCRIPTION | DATE | APPROVED |
| A | INITIAL RELEASE | 10/19/2021 | GUTTADAURO |
| | | | |
| | | | |



NOTES:

- VOLTAGE RATING:**
DIELECTRIC VOLTAGE WITHSTAND TEST: 1500V / 1 Sec
CONDUCTOR RESISTANCE ≤ 5.58Ω/1000M
VOLTAGE RATING AC 300V
- CABLE MARKING:**
(UL) E135710-F5 SJT 3X12AWG 105°C 300V VW-1
c(UL) SJT 3X3.31mm²(12AWG) 105°C 300V FT2
- OPTIONAL LABELS:**
OPTIONAL LABEL(S) MAY INCLUDE
UL, CURRENT AND/OR WARNING
- CABLE ASSEMBLY SHALL BE INDIVIDUALLY PACKAGED IN ACCORDANCE WITH SPEC. PS-0031.**
- ALL DIMENSIONS FOR REFERENCE ONLY.**

| ITEM NUMBER | LENGTH INCHES [MM] |
|------------------|------------------------------|
| N520P-C19-20-03F | 36.0 ± 0.4 [910 ± 10.0] |
| N520P-C19-20-06F | 72.0 ± 0.8 [1830 ± 20.0] |
| N520P-C19-20-10F | 120.0 ± 1.2 [3050 ± 30.0] |

| | | | | |
|--|---|--|---|-----------------------------------|
| UNLESS OTHERWISE SPECIFIED, DIMENSIONS ARE IN INCHES [mm] OVERALL CABLE LENGTH TOLERANCE: ≤12 [305] = +1 [25] / -0 >12 [305] ≤60 [1524] = +2 [51] / -0 >60 [1524] ≤120 [3048] = +4 [102] / -0 >120 [3048] ≤300 [7620] = +6 [152] / -0 >300 [7620] = +5% / -0 ALL OTHER DIMENSIONAL TOLERANCES: .X = ± .2 [5] FRACTIONS ± 1/32 .XX = ± .02 [5] ANGLES ± 1° .XXX = ± .005 [13] | APPROVALS DRAWN BY MVEERAPPAN CHECKED BY DFRISIELLO APPROVED BY GUTTADAURO | DATE 10/19/2021 10/19/2021 10/19/2021 |  50 High Street, West Mill, North Andover, MA 01845 USA. Phone: 1.800.341.5266 1.978.682.6936 | |
| | THIRD-ANGLE PROJECTION  | CONFIGURATION DETAILS OF UNDIMENSIONED FEATURES MAY VARY COLOR VARIATIONS MAY OCCUR | | CATEGORY POWER PRODUCTS |
| SIZE A | | CAGE CODE 43321 | ITEM NO. N520P-C19-20 | REV. A |
| SCALE: NONE | | CAD FILE: N520P-C19-20.SLDDRW | | SHEET 1 OF 1 |