

3300-3800 MHz 10 dBi Gain Omnidirectional PRO Series
Antenna - Type N Female Connector, Fiberglass Radome



HG3510U-PRO

Features

- All weather operation
- Includes heavy duty steel mast mounting brackets
- Lightweight fiberglass radome
- Integral N-Female connector
- Commercial grade design
- 360° Omnidirectional Pattern

Applications

- Point to Multipoint and Non Line of Sight (NLOS) Applications
- 10 dBi gain
- 3500 and CBRS Cellular Band Operation

Description

The L-com HG3510U-PRO is a high performance 5G / LTE outdoor omnidirectional antenna specifically designed for cellular networks. L-com's HG3510U-PRO has 10 dBi gain and can be used to broadcast Cellular LTE signals. The HG3510U-PRO operates from 3300 to 3800 MHz which is ideal for 5G, LTE, applications in CBRS band. The Multi-Band design of the L-com HG3510U-PRO antenna eliminates the need to purchase different antennas for each frequency. This simplifies installations since the same antenna can be used for a wide array of telecommunication applications where wide coverage is desired.

The HG3510U-PRO from L-com has omnidirectional patterns with vertical polarization and features Type N connectors. The Type N connectorized HG3510U-PRO antenna from L-com is designed specifically for outdoor operation and is ideal for point to multipoint use in large open areas such as base station installations or large campuses. The included mounting bracket and hardware makes this antenna very easy to install. This 5G / LTE outdoor omnidirectional antenna just like our wide selection of superior quality RF parts, ship same day. Contact our knowledgeable and friendly technical support and sales staff for your answers on antennas or other L-com products.

Configuration

Design	Omni
Band Type	Single
Radiation Pattern	Directional
Polarization	Vertical
Connector Type	N Female
Number of Ports	2
Lightning Protection	DC Ground

Electrical Specifications

Description	Minimum	Typical	Maximum	Units
Frequency Range	3,300		3,800	MHz
Input VSWR		2:1		
Impedance		50		Ohms
Gain			10	
Input Power			100	Watts

Click the following link (or enter part number in "SEARCH" on website) to obtain additional part information including price, inventory and certifications:
[3300-3800 MHz 10 dBi Omni Antenna, N Female, PRO series, fiberglass radome HG3510U-PRO](#)

3300-3800 MHz 10 dBi Gain Omnidirectional PRO Series
Antenna - Type N Female Connector, Fiberglass Radome

HG3510U-PRO



Mechanical Specifications

Radome Material	Fiberglass
Size	
Length	25.5906 in [650 mm]
Width	0.787402 in [20 mm]
Height	0.787402 in [20 mm]
Mounting Mast Diameter	1.18 to 2.36 in [29.97 to 59.94 mm]
Weight	2.65 lbs [1.2 kg]

Environmental Specifications

Temperature	
Operating Range	-40 to +60 deg C
Wind Survivability	134.216 MPH [216 KPH]

Compliance Certifications (see [product page](#) for current document)

Plotted and Other Data

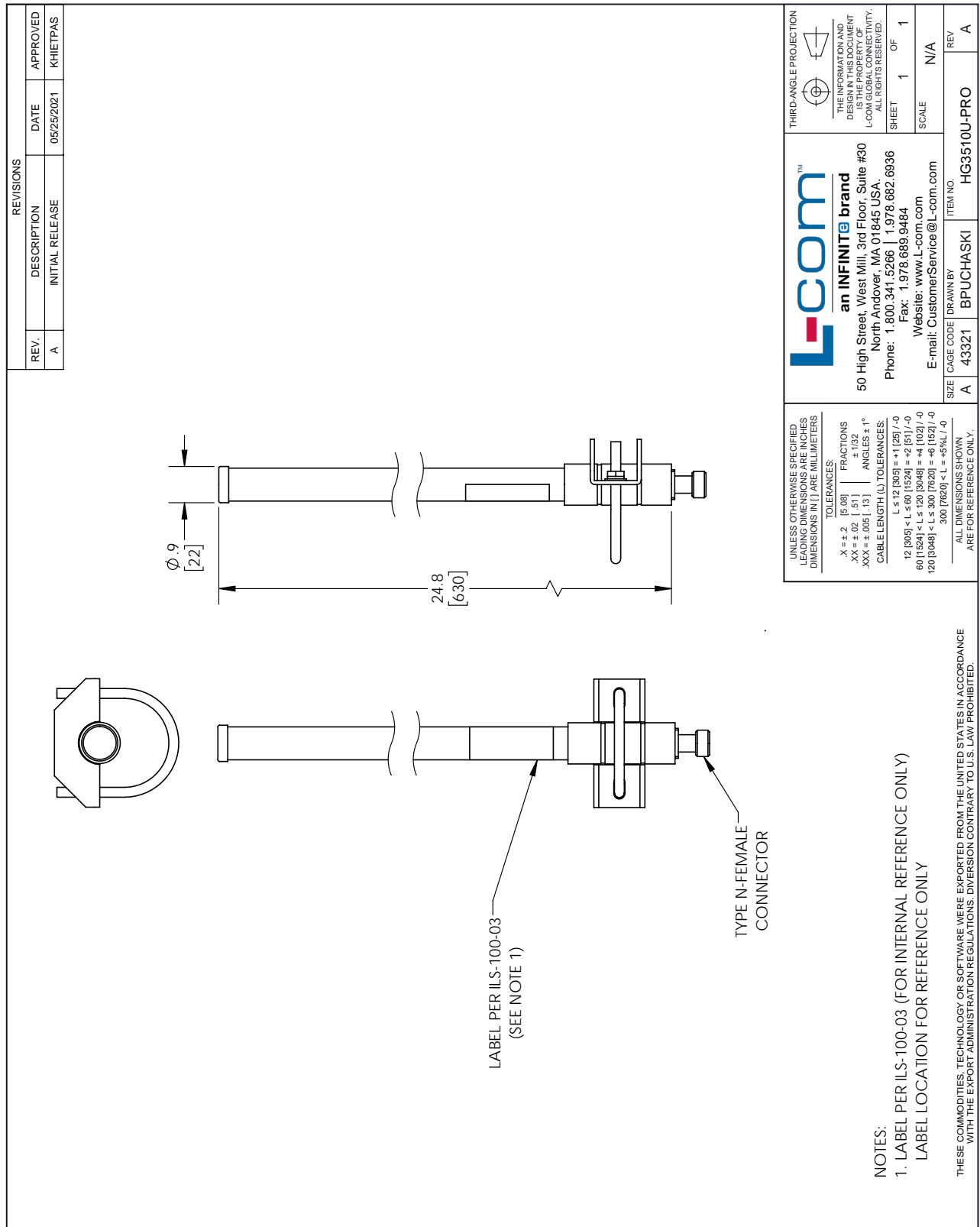
Notes:

3300-3800 MHz 10 dBi Gain Omnidirectional PRO Series Antenna - Type N Female Connector, Fiberglass Radome from L-com has same day shipment for domestic and International orders. Our portfolio includes coaxial cable assemblies, connectors, adapters and custom products as well as lightning and surge protectors, NEMA rated enclosures, and an RF product line which includes antennas, amplifiers, passive, and active components.

The information contained within this document is accurate to the best of our knowledge and representative of the part described herein. It may be necessary to make modifications to the part and/or the documentation of the part in order to impliment improvements. L-com reserves the right to make such changes as required. Unless otherwise stated, all specifications are nominal. L-com does not make any representation or warranty regarding the suitability of the part described herein for any particular purpose, and L-com does not assume liability arising out of the use of any part or document.

3300-3800 MHz 10 dBi Gain Omnidirectional PRO Series Antenna
 - Type N Female Connector, Fiberglass Radome

L-com CAD Drawing



REVISIONS		
REV.	DESCRIPTION	DATE
A	INITIAL RELEASE	05/25/2021
		APPROVED
		KHIETPAS

UNLESS OTHERWISE SPECIFIED LEADING DIMENSIONS ARE IN INCHES DIMENSIONS IN [] ARE MILLIMETERS

TOLERANCES:
 .X = ±.2 [5.08] FRACTIONS ± 1/32
 .XX = ±.02 [.51] ANGLES ± 1°
 .XXX = ±.005 [.13]

CABLE LENGTH (L) TOLERANCES:
 L ≤ 12 [305] = ±1 [25] / -0
 12 [305] < L ≤ 60 [1524] = ±2 [51] / -0
 60 [1524] < L ≤ 120 [3048] = ±4 [102] / -0
 120 [3048] < L ≤ 300 [7620] = ±6 [152] / -0
 300 [7620] < L = +5%L / -0

ALL DIMENSIONS SHOWN ARE FOR REFERENCE ONLY.

THIRD-ANGLE PROJECTION

THE INFORMATION AND DIMENSIONS SHOWN ARE THE PROPERTY OF L-COM GLOBAL CONNECTIVITY. ALL RIGHTS RESERVED.
 SHEET 1 OF 1
 SCALE N/A

L-com™
 an INFINITE brand
 50 High Street, West Mill, 3rd Floor, Suite #30
 North Andover, MA 01845, USA.
 Phone: 1.800.341.5266 | 1.978.682.6936
 Fax: 1.978.689.9484
 Website: www.L-com.com
 E-mail: CustomerService@L-com.com

ITEM NO. HG3510U-PRO
 DRAWN BY BPUCHASKI
 CAGE CODE 43321
 SIZE A

- NOTES:
 1. LABEL PER ILS-100-03 (FOR INTERNAL REFERENCE ONLY)
 LABEL LOCATION FOR REFERENCE ONLY

THESE COMMODITIES, TECHNOLOGY OR SOFTWARE WERE EXPORTED FROM THE UNITED STATES IN ACCORDANCE WITH THE EXPORT ADMINISTRATION REGULATIONS. DIVERSION CONTRARY TO U.S. LAW PROHIBITED.

T-Rev.D