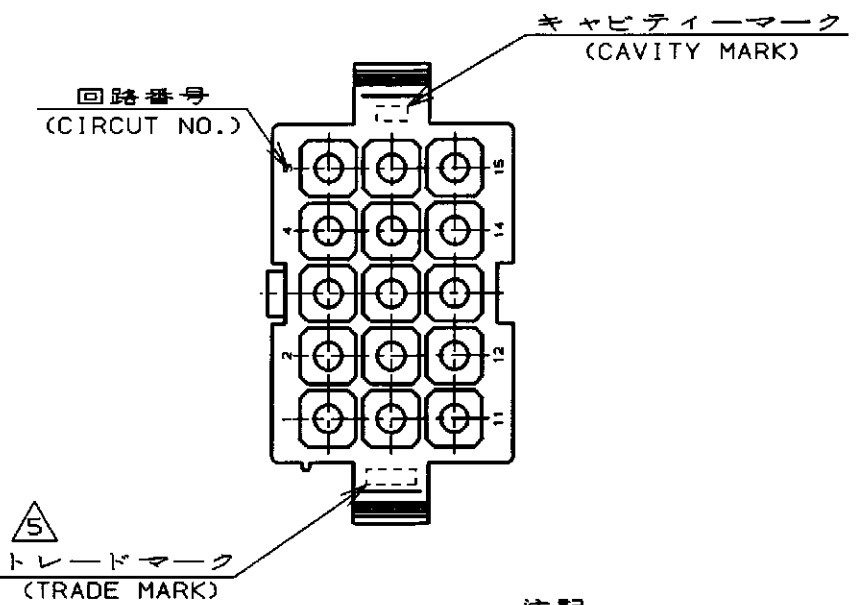
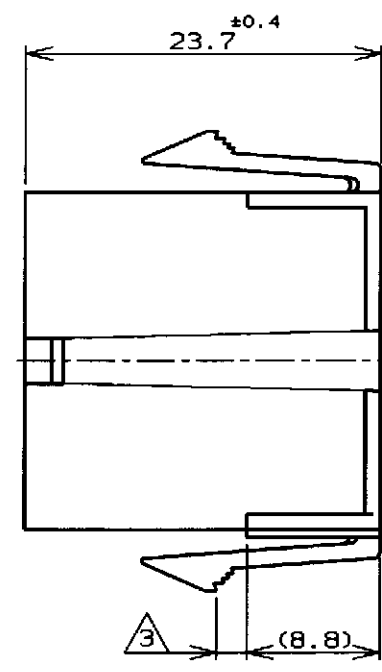
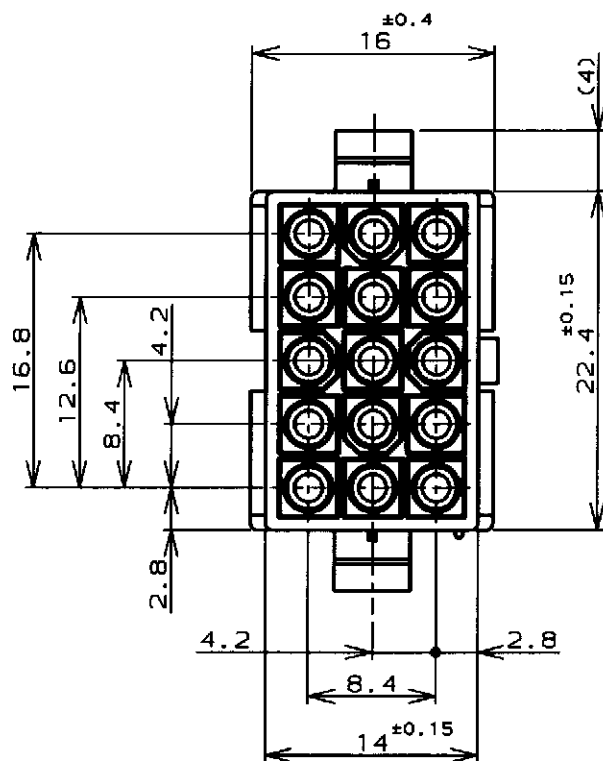


| LOC | DIST |
|-----|------|
| | |

| REVISIONS | | | | | |
|-----------|-----|---------------|--------------|----------|------|
| P | LTR | DESCRIPTION | ECN | DATE | APVD |
| C | | 再作成 (REDRAWN) | FJ00-0871-98 | 8 Jun 98 | ms |

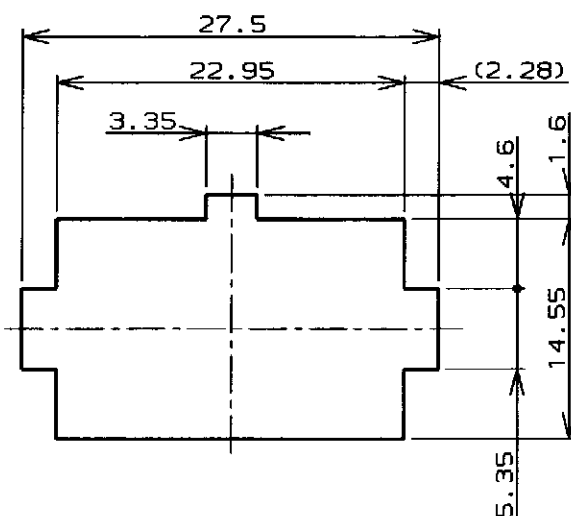


注記;

1. 使用端子型番は170359, 170360, 170361, 170362
2. 嵌合相手ハウジング型番は172171
- △ 3 適用パネル厚 0.8~2.0mm
4. 取付穴打抜方向とハウジングの挿入方向は同じとする。
- △ 5 表1参照

NOTE;

1. APPLICABLE CONT P/N: 170359, 170360, 170361, 170362
2. MATING HSG P/N: 172171
- △ 3 APPLICABLE PANEL THICKNESS: 0.8~2.0mm
4. HOUSING INSERTION INTO THE PANEL CUT-OUT MUST BE DONE IN THE SAME DIRECTION WITH PUNCH KNOCKING.
- △ 5 SEE TABLE 1



寸法公差は±0.20 (TOLERANCE: ±0.20)

パネル取付穴 (RECOMMENDED PANEL OPENING DIMENSION)

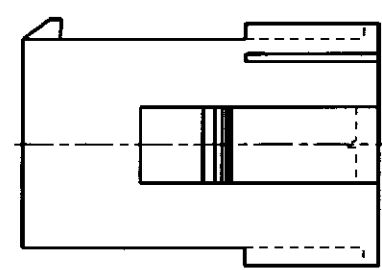


表 1 (TABLE 1)

| トレードマーク (TRADE MARK) | 生産場所 (MANUFACTURING PLACES) |
|----------------------|-----------------------------|
| -AMP OR AMP | 日本 (JAPAN) |
| -+AMP OR AMP | 中国 (CHINA/PRC) |

| | |
|-----------------------|------------------------|
| 黒 (BLACK) | 1-172163-9 |
| 青 (BLUE) | 1- -6 |
| 緑 (GREEN) | 1- -5 |
| 赤 (RED) | 1- -2 |
| 自然色 (NATURAL) | 172163-1 |
| 色 (COLOR) | 型番 (P/N) |
| WIRE RANGE 包含電線断面積 | INSULATION DIA 被覆外径 |

| | | | |
|---|--|---|--|
| THIS DRAWING IS A CONTROLLED DOCUMENT FOR AMP INCORPORATED. IT IS SUBJECT TO CHANGE AND THE CONTROLLING ENGINEERING ORGANIZATION SHOULD BE CONTACTED FOR THE LATEST REVISION. | | OWN M. Yamashita 8 Jun 98 | AMP 日本エー・エム・ピー株式会社 Kawasaki, Japan |
| DIMENSIONS: 単位: 概 mm | | CHK M. Shida 15 Jun 98 | |
| TOLERANCES UNLESS OTHERWISE SPECIFIED 一般公差 (GENERAL TOLERANCE) ±0.3 | | APVD M. Shida 15 Jun 98 | NAME 名称 |
| MATERIAL 材料 66ナイロン UL94V-0 (66NYLON UL94V-0) | | PRODUCT SPEC 製品規格 108-5138 | 15極ミニユニバーサルメイトンロックキャップハウジング (UL94V-0) |
| FINISH 仕上 | | INSTRUCTION SHEET 取り扱い説明書 IS-105J | 15Pos MINI UNIVERSAL MATE-N-LOCK CONN. CAP HOUSING (UL94V-0) |
| WEIGHT | | RESTRICTED TO | SIZE CAGE CODE DRAWING NO A3 00779 C-172163 |
| CUSTOMER DRAWING | | SCALE 2-1 SHEET 1 OF 1 REV C | |