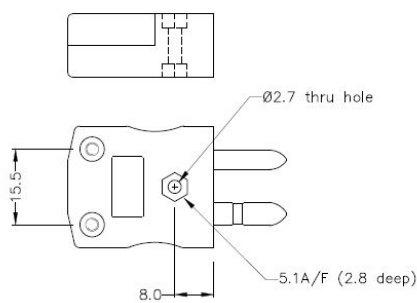
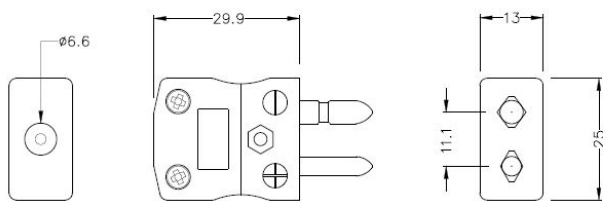
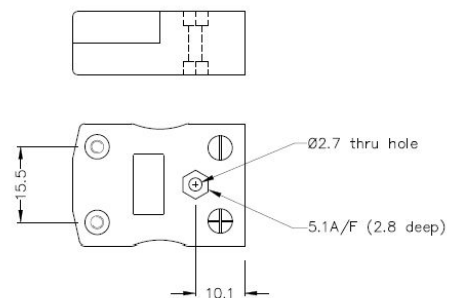
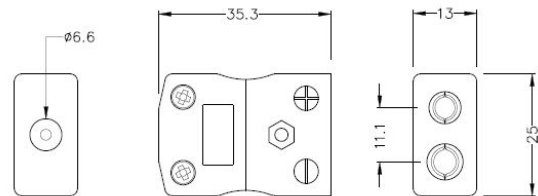


Standard Thermocouple Connector Plug & Socket IS-T-M+F Type T IEC



Standard in-line Plug
(dimensions in mm)



Standard in-line Socket
(dimensions in mm)

Product Code	XF-1725-FAR
General Description	Contacts are polarised to prevent incorrect connection
Thermocouple Type	T IEC
Connector Size	Standard
Connector Type	Plug & Socket
Colour	Brown
Max. Temperature	220°C
Pins	Solid Round Pins
+Positive Contact	Copper
-Negative Contact	Copper Nickel

Standards Met	BS EN 50212:1997. RoHS
----------------------	------------------------

