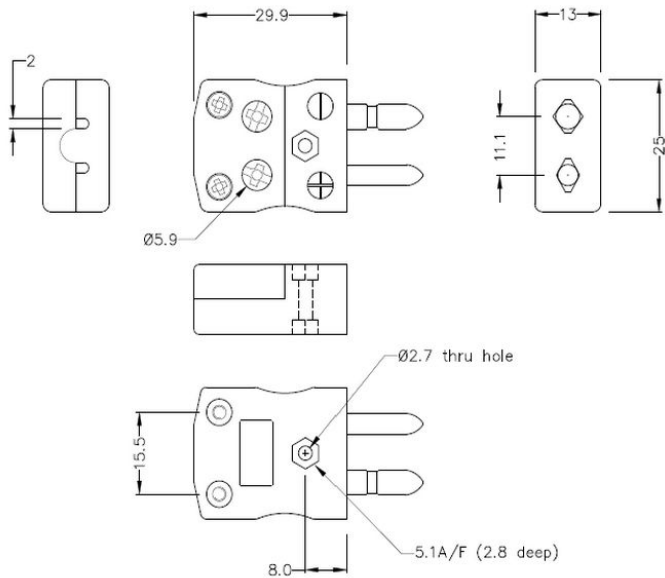
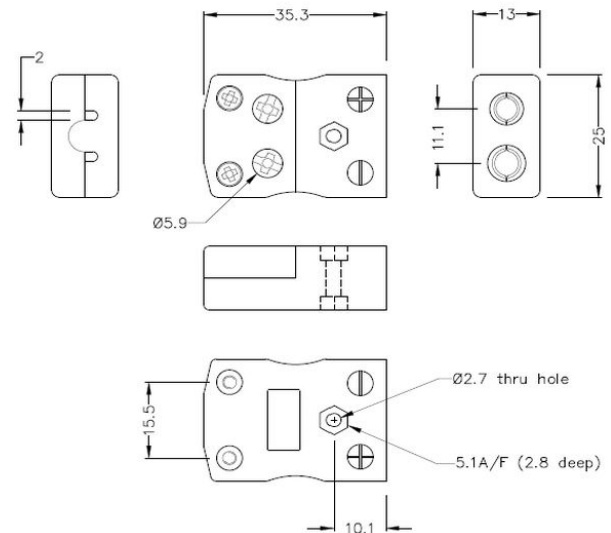


Standard Quick Wire Thermocouple Connector Quick Wire Plug & Socket JS-J-MQ+FQ Type J JIS



Standard in-line Plug - Quick Wire
(dimensions in mm)



Standard in-line Socket - Quick Wire
(dimensions in mm)

Product Code	XF-1738-FAR
General Description	Easy 'jab-in' connection for rapid termination, contacts are polarised to prevent incorrect connection
Thermocouple Type	J JIS
Connector Size	Standard
Connector Type	Quick Wire Plug & Socket
Colour	Yellow
Max. Temperature	220°C
Pins	Solid Round Pins
+Positive Contact	Iron

-Negative Contact	Copper Nickel
Standards Met	BS EN 50212:1997. RoHS

