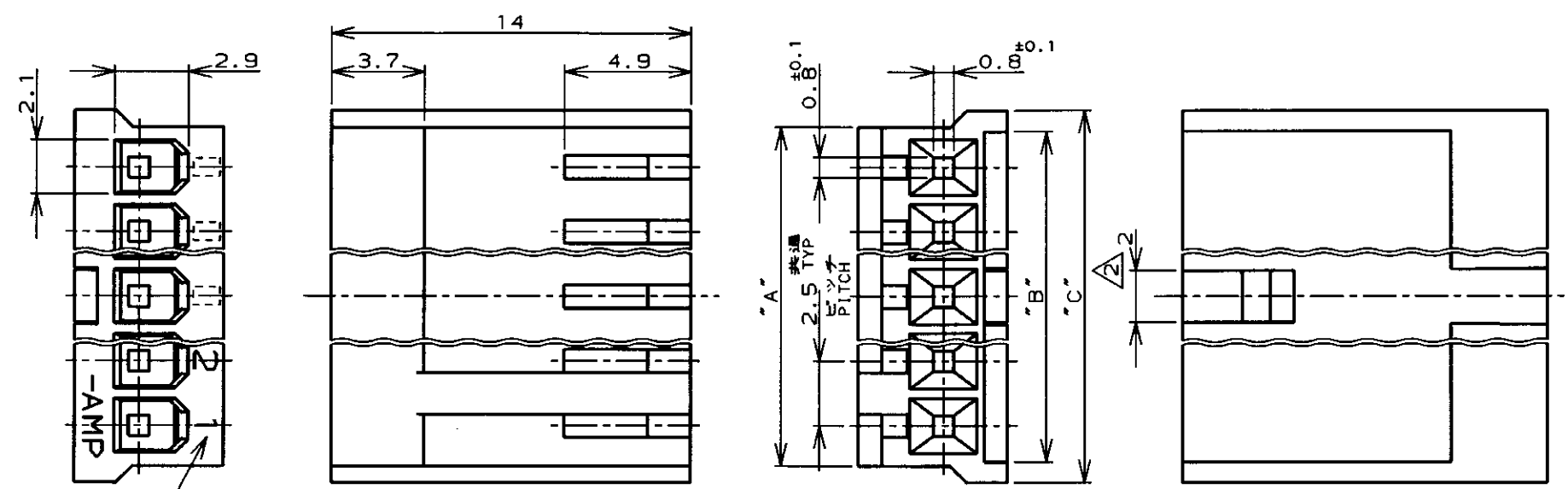
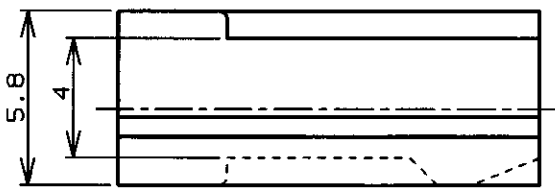


LOC J
 DIST .

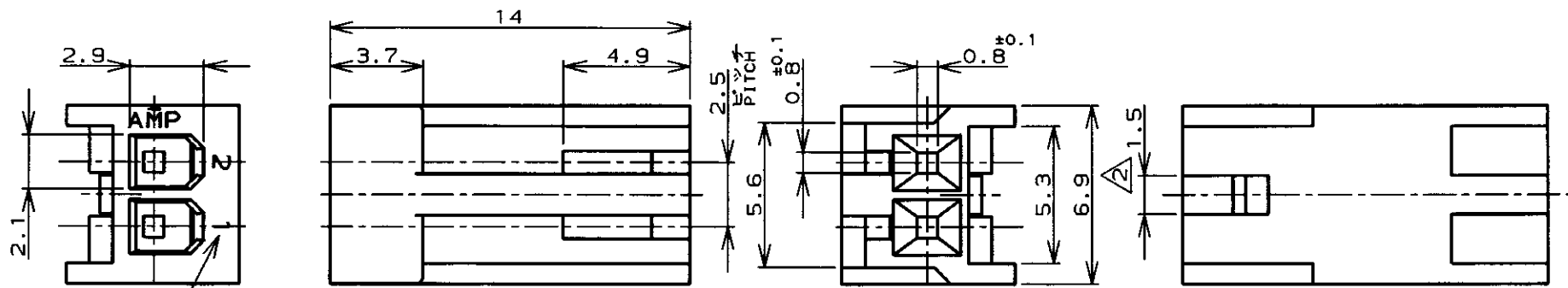
REVISIONS					
P	LTR	DESCRIPTION	ECN	DATE	DWN APVD
	H	再作成	FJ00-0858-97	12/JUN/'97	H.H S.K
	J	改訂	FJ00-1503-97	3/OCT/97	H.H



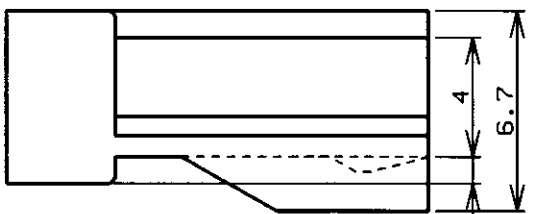
回路番号
 CIRCUIT No.



3~12極
 POS.



回路番号
 CIRCUIT No.



2極
 POS.

注記:
 NOTES:

- 使用するコンタクトは 170262 又は 170263.
 CONTACTS, 170262 & 170263, ARE USED.
- ロック凸部位置は長手方向の中央。
 LOCKING PROTRUSION IS PLACED ON THE CENTER OF HOUSING.

"C"	"B"	"A"	極数 (Pos.)	型番 (PART NUMBER)	赤色 (RED)	緑色 (GREEN)		
31.9	30.3	30.6	12	5-171822-2	3-171822-2	1-171822-2		
26.9	25.3	25.6	10	5- -0	3- -0	1- -0		
24.4	22.8	23.1	9	4- -9	2- -9	0- -9		
21.9	20.3	20.6	8	4- -8	2- -8	0- -8		
19.4	17.8	18.1	7	4- -7	2- -7	0- -7		
16.9	15.3	15.6	6	4- -6	2- -6	0- -6		
14.4	12.8	13.1	5	4- -5	2- -5	0- -5		
11.9	10.3	10.6	4	4- -4	2- -4	0- -4		
9.4	7.8	8.1	3	4- -3	2- -3	0- -3		
- 図示 -				2	4-171822-2	2-171822-2	0-171822-2	
"C"	"B"	"A"	極数 (Pos.)	型番 (PART NUMBER)	青色 (BLUE)	黒色 (BLACK)	自然色 (NATURAL)	
31.9	30.3	30.6	12	5-171822-2	3-171822-2	1-171822-2		
26.9	25.3	25.6	10	5- -0	3- -0	1- -0		
24.4	22.8	23.1	9	4- -9	2- -9	0- -9		
21.9	20.3	20.6	8	4- -8	2- -8	0- -8		
19.4	17.8	18.1	7	4- -7	2- -7	0- -7		
16.9	15.3	15.6	6	4- -6	2- -6	0- -6		
14.4	12.8	13.1	5	4- -5	2- -5	0- -5		
11.9	10.3	10.6	4	4- -4	2- -4	0- -4		
9.4	7.8	8.1	3	4- -3	2- -3	0- -3		
- 図示 -				2	4-171822-2	2-171822-2	0-171822-2	

THIS DRAWING IS A CONTROLLED DOCUMENT FOR AMP INCORPORATED. IT IS SUBJECT TO CHANGE AND THE CONTROLLING ENGINEERING ORGANIZATION SHOULD BE CONTACTED FOR THE LATEST REVISION.		DWN 6/12 '97 H. HOSHINO CHK 6/12 '97 J. TANIGAWA APVD 6/12 '97 S. Kubouchi		AMP 株式会社 Kawasaki, Japan	
DIMENSIONS: 単位: 概 mm		TOLERANCES UNLESS OTHERWISE SPECIFIED 一般公差 10% ±0.2 30% ±0.25 100% ±0.3 ANGLE: ±0.3°		NAME 名称 ハウジング (AMP EIシリーズ コネクタ) HOUSING (AMP EI SERIES CONNECTOR)	
MATERIAL 材料 66 NYLON (UL94V-0)		COLOR 色別 表参照 SEE TABLE		APPLICATION SPEC 取付適用規格 WEIGHT CUSTOMER DRAWING	
		SIZE CAGE CODE DRAWING NO A3 00779 C-171822		RESTRICTED TO SCALE 尺度 4-1 SHEET 1 OF 1 REV J	