



Color: gray

Physical data	
Width	8 mm / 0.315 inches
Height	3.89 mm / 0.153 inches
Jumper assignment	1-2

Material Data	
Note (material data)	Information on material specifications can be found here
Color	gray
Fire load	0.004 MJ
Weight	0.7 g

Commercial data	
eCl@ss 10.0	27-14-11-40
eCl@ss 9.0	27-14-11-40
ETIM 8.0	EC000489
ETIM 7.0	EC000489
PU (SPU)	200 (25) pcs
Packaging type	Box
Country of origin	DE
GTIN	4044918610346
Customs tariff number	85366990990



Downloads

Environmental Product Compliance

Compliance Search

Environmental Product Compliance 279-482

↓

Documentation

Additional Information

Technical Section

pdf

2142.18 KB

↓

Bid Text

279-482

19.02.2019

xml

2.54 KB

↓

279-482

27.04.2017

doc

23.50 KB

↓

CAD/CAE-Data

CAD data

2D/3D Models 279-482

↓

CAE data

WSCAD Universe 279-482

↓

ZUKEN Portal 279-482

↓

1 Compatible products

1.1 Optional accessories

1.1.1 Tool

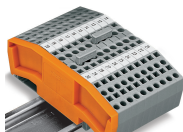
1.1.1.1 Operating tool



Item No.: 279-432
Operating tool; made of insulating material; 2-way

Installation notes

Commoning



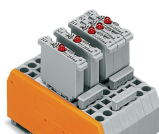
Commoning using comb-style jumper bars.
Push comb-style jumper bars down until fully inserted.

Commoning



4-conductor through terminal blocks,
angled type,
formation of groups with 3-way, comb-style jumper bars

Commoning



Carrier terminal blocks with component
plugs,
alternate comb-style jumper bars,
3-way comb-style jumper bar

Commoning



Commoning front-entry disconnect terminal blocks via comb-style jumper bar using a 10-pole operating tool