

## Han Domino EE cube, crimp (F.1)

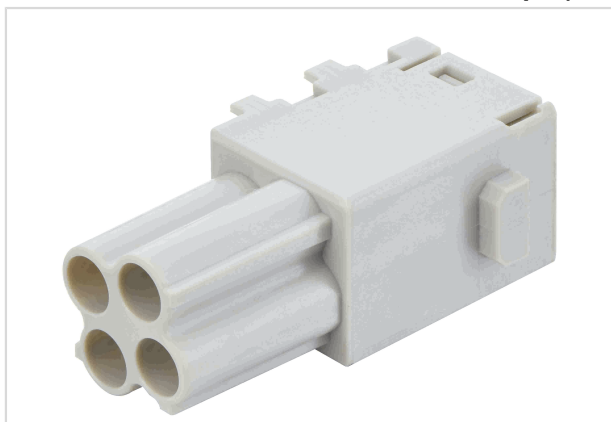


Image is for illustration purposes only. Please refer to product description.

Part number	09 14 904 1101
Specification	Han Domino EE cube, crimp (F.1)
HARTING eCatalogue	<a href="https://b2b.harting.com/09149041101">https://b2b.harting.com/09149041101</a>

### Identification

Category	Modules
Series	Han-Modular®
Type of module	Han® Domino EE Cube
Size of the module	Domino module
Description of the module	Small tab

### Version

Termination method	Crimp termination
Gender	Female
Number of contacts	4
Details	Please order crimp contacts separately.

### Technical characteristics

Conductor cross-section	0.14 ... 4 mm <sup>2</sup>
Rated current	16 A
Rated voltage	400 V
Rated impulse voltage	6 kV
Pollution degree	3
Insulation resistance	>10 <sup>10</sup> Ω
Limiting temperature	-40 ... +125 °C
Mating cycles	≥500
Mating cycles with other HMC components	≥10,000



Pushing Performance  
Since 1945

## Material properties

Material (insert)	Polycarbonate (PC)
Colour (insert)	RAL 7032 (pebble grey)
Material flammability class acc. to UL 94	V-0
RoHS	compliant
ELV status	compliant
China RoHS	e
REACH Annex XVII substances	Not contained
REACH ANNEX XIV substances	Not contained
REACH SVHC substances	Not contained

## Specifications and approvals

Specifications	IEC 60664-1 IEC 61984
----------------	--------------------------

## Commercial data

Packaging size	2
Net weight	5.3 g
Country of origin	Romania
European customs tariff number	85389099
GTIN	5713140185111
eCl@ss	27440217 Module for industrial connectors (power/signals)