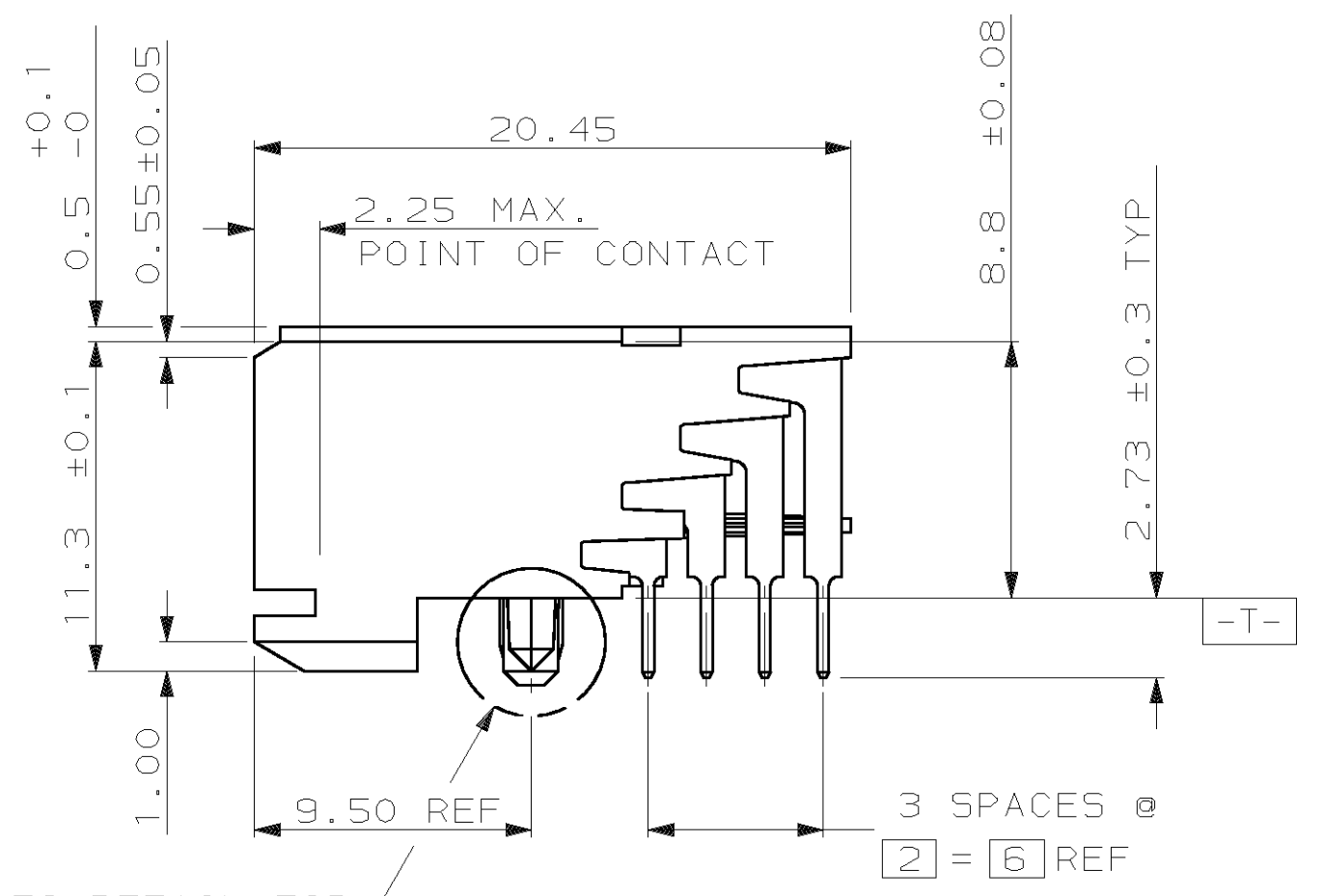
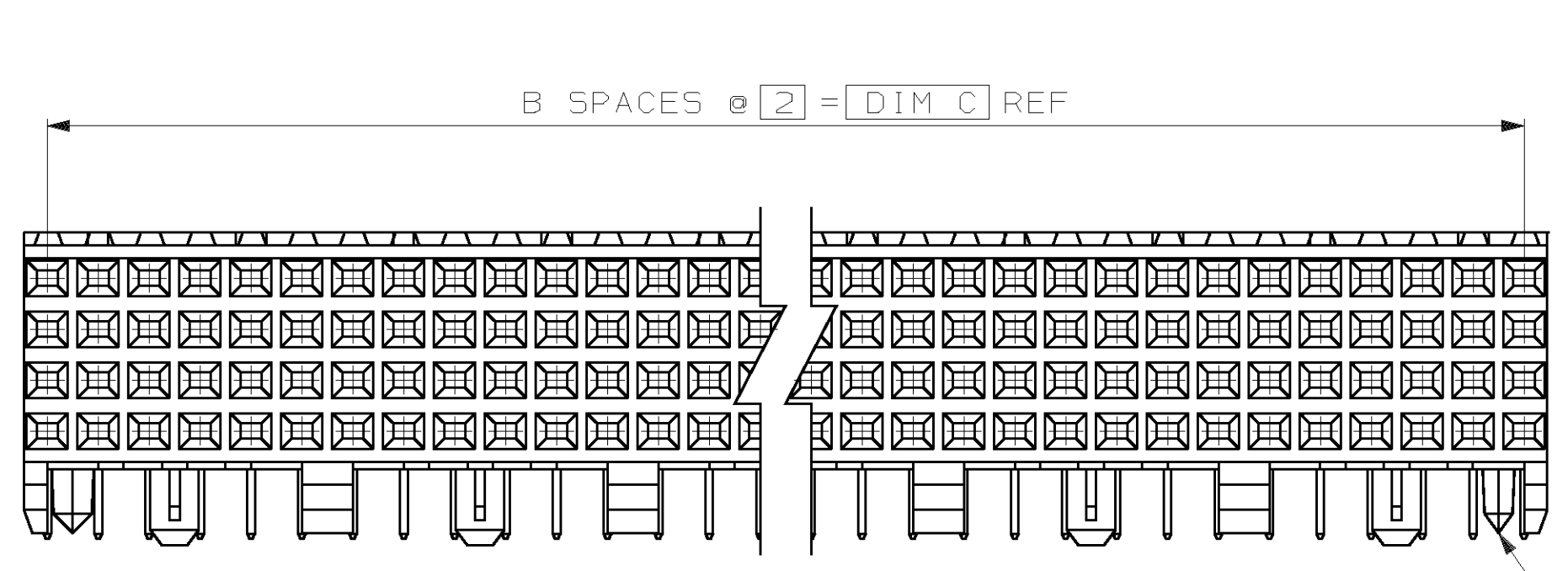
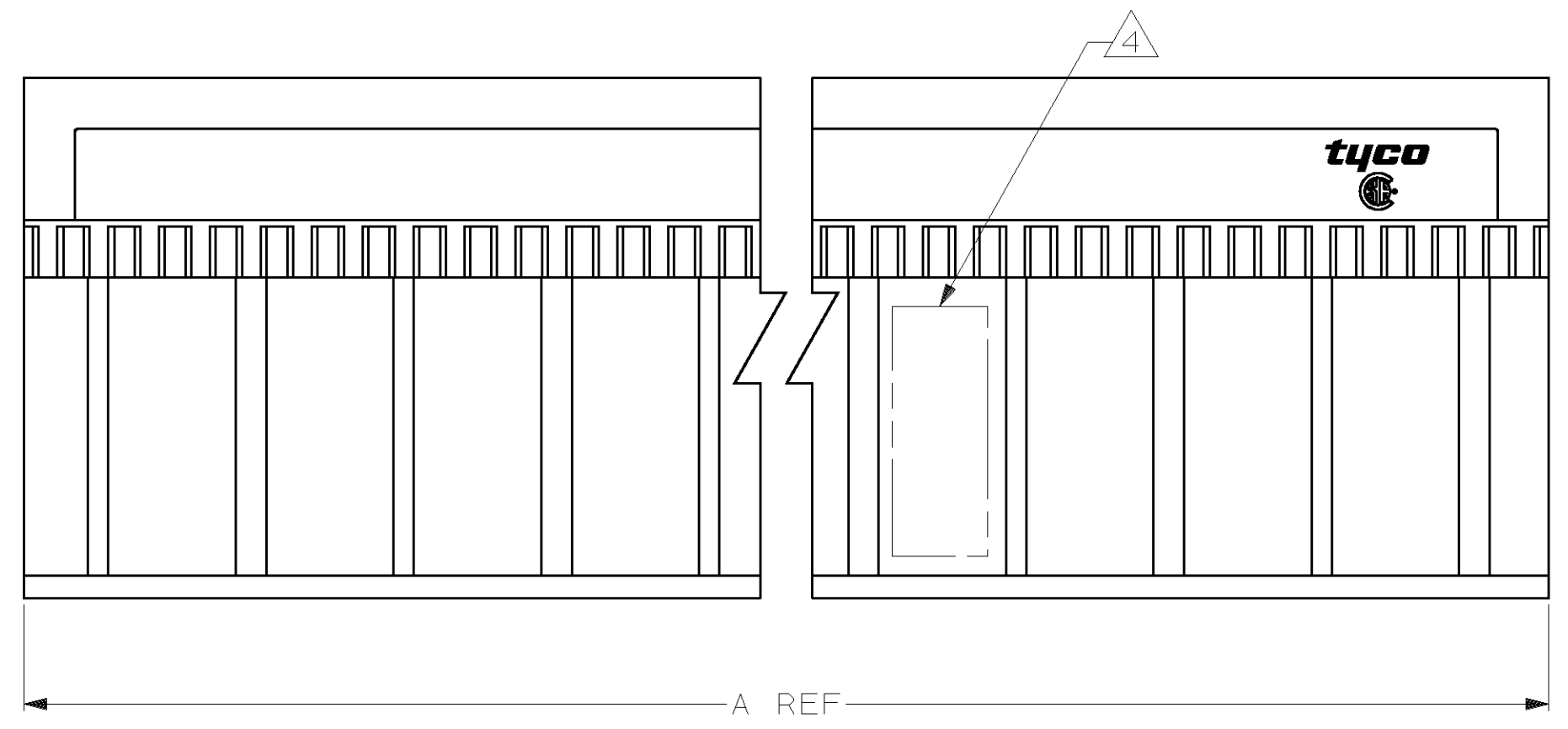
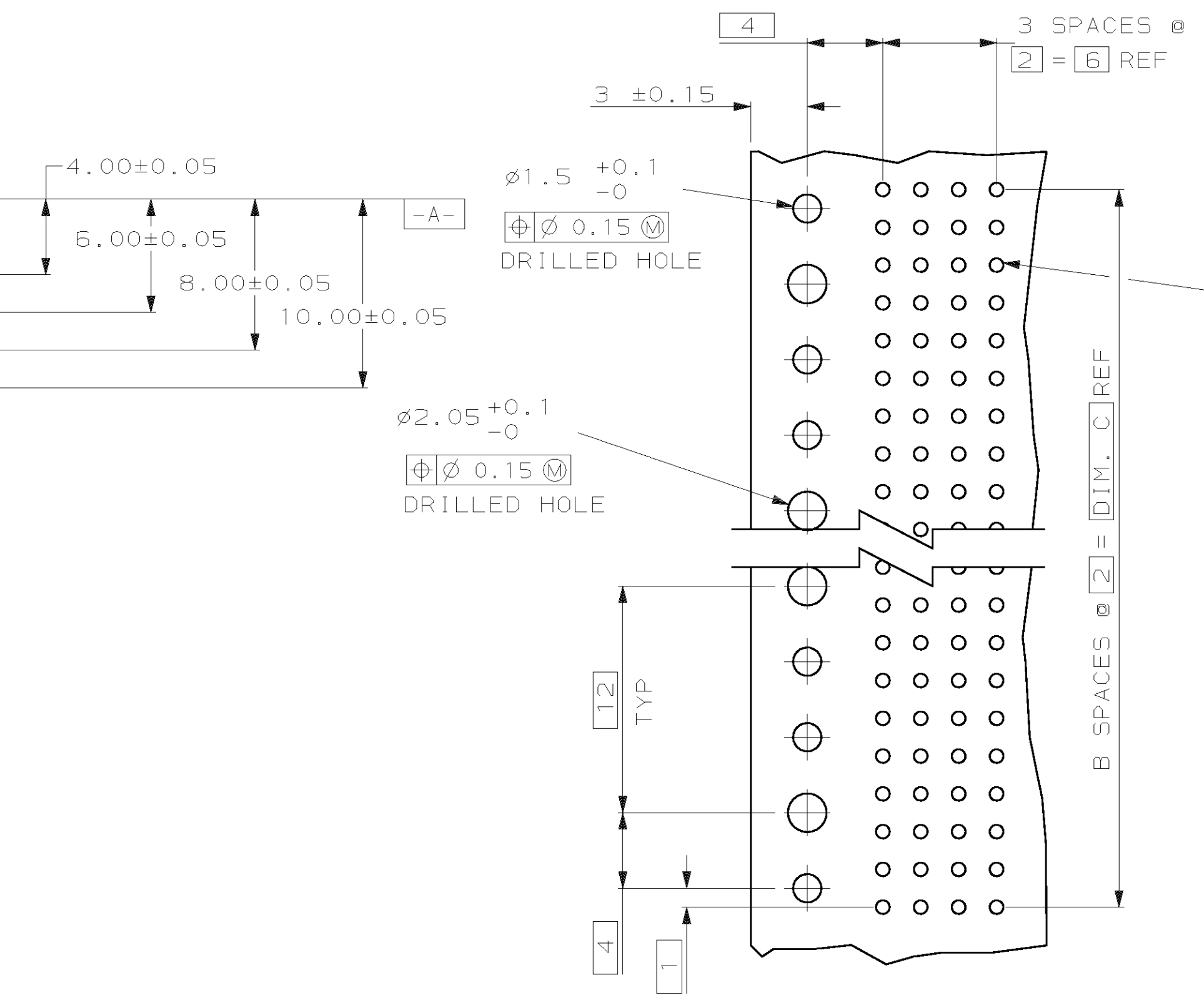
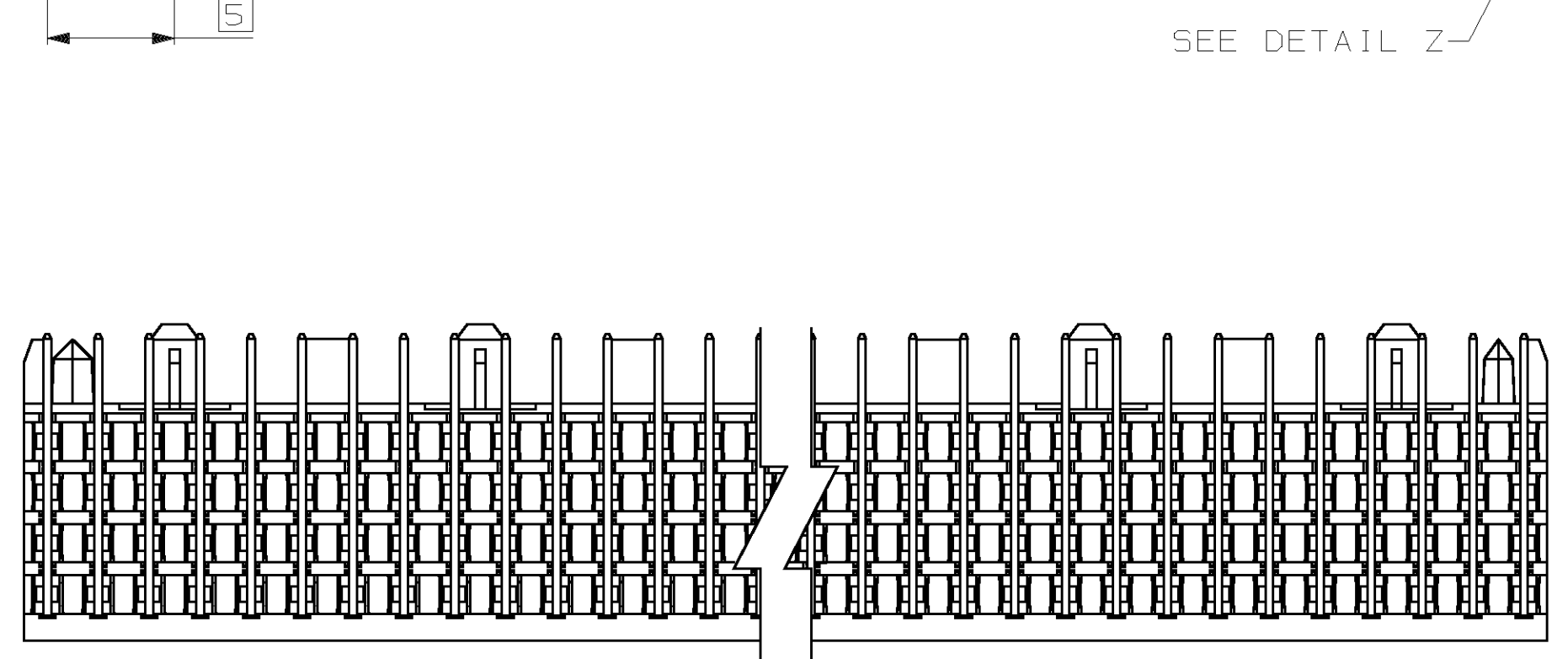
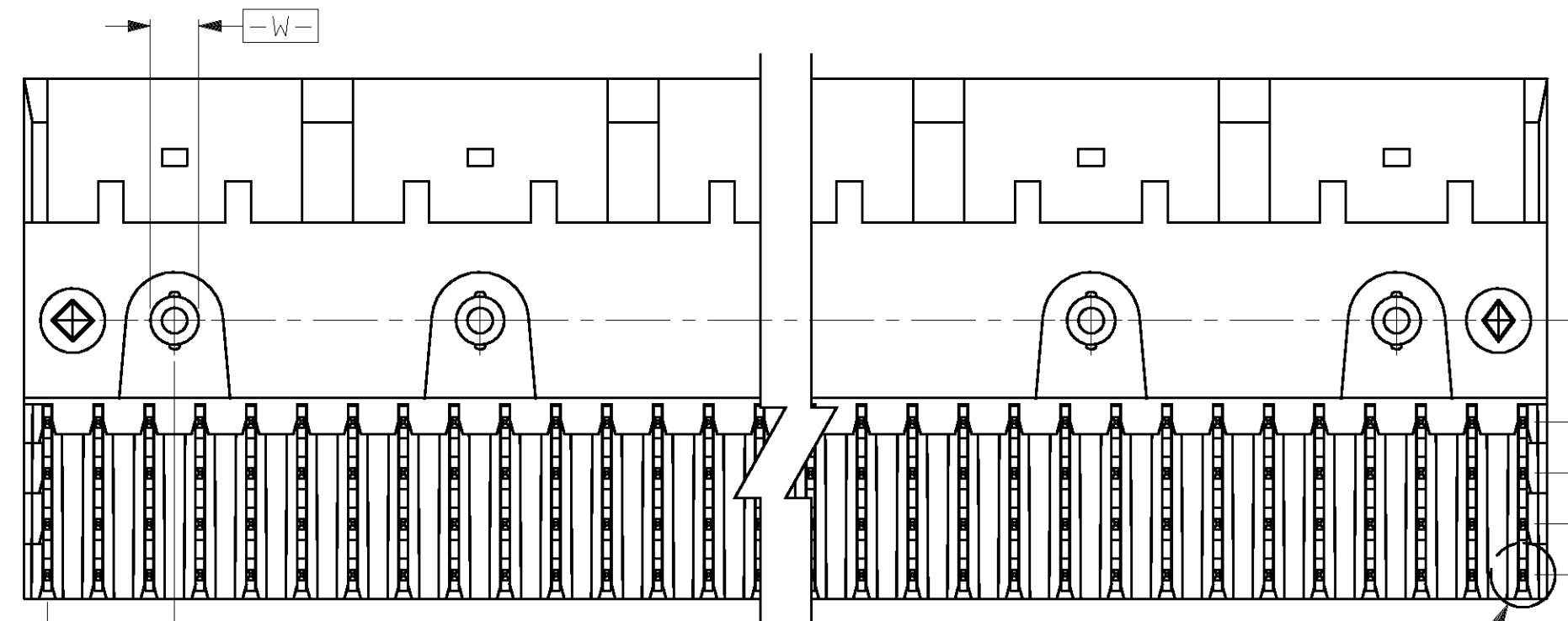


LOC		DIST		REV		REVISIONS		
AD	00	P	F	ZONE	LTR	DESCRIPTION	DATE	APPD
				T		REV PER EC 0U1B-0071-01	03 APR 01	DK
				U		REV PER EC 0S12-0212-03	05 AUG 02	RW
				V		REV PER EC 0S12-0242-03	04 SEP 03	RW
				W		REV PER EC 0S12-0412-03	29 OCT 03	RW

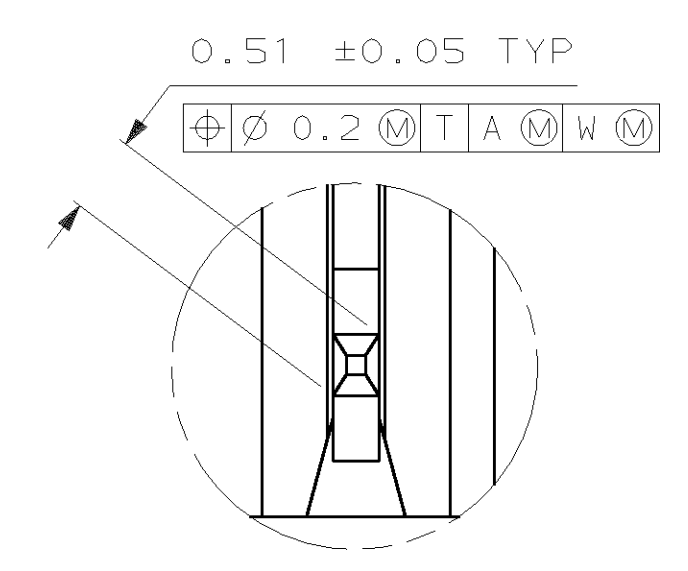


SEE TABLE
 REFER TO DETAIL FOR
 COLD HOLD CONFIGURATION

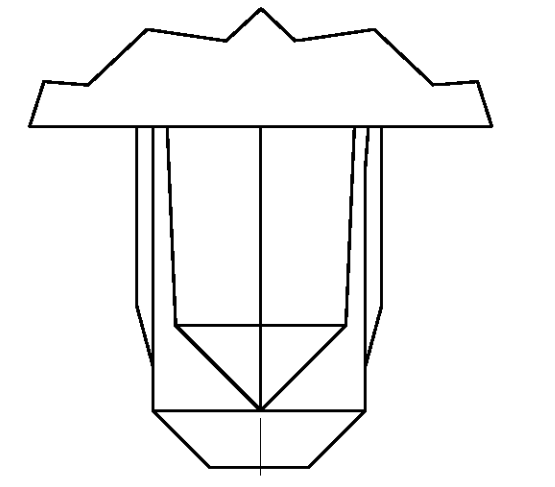


RECOMMENDED CIRCUIT PATTERN
 PER IPC-D300 TYPE 11, CLASS C
 (COMPONENT SIDE)

- 1 HOUSING MATERIAL: LIQUID CRYSTAL POLYMER
 COLOR: NATURAL.
- 2 CONTACT MATERIAL: PHOSPHOR-BRONZE.
- 3 CONTACT FINISH:
 UNDERPLATE (ENTIRE CONTACT) -
 0.0013 MIN. NICKEL
 ON MATING SURFACES-
 FLASH GOLD PER AMP INCORPORATED SPECIFICATION, OVER
 0.0008 MIN. PALLADIUM-NICKEL PER AMP INCORPORATED SPECIFICATION,
 OVER UNDERPLATE.
 ON LEADS-
 0.004 MIN. TIN-LEAD, OVER
 UNDERPLATE.
 SURFACE CONDITIONER PER AMP SPECIFICATION 112-1002(ENTIRE CONTACT AFTER PLATING).
- 4 PART MARKING PER AMP INCORPORATED SPECIFICATION 115-9009, LOCATED
 APPROXIMATELY AS SHOWN.
- 5 CONTACT FINISH:
 UNDERPLATE (ENTIRE CONTACT):
 0.00127 MIN NICKEL PER AMP SPECIFICATION 112-25-2.
 ON MATING SURFACES:
 0.00076 MIN NICKEL OR COBALT HARDENED GOLD PER
 AMP SPECIFICATION 112-162-5, OVER UNDERPLATE.
 ON LEADS: 0.004 MIN TIN-LEAD, OVER UNDERPLATE.
 LUBRICATION (ENTIRE CONTACT):
 SURFACE CONDITIONER, PER AMP SPECIFICATION 112-1002,
 AFTER PLATING.



DETAIL Z
 SCALE 20:1



TYPICAL COLD HOLD
 FOR ALL ASSEMBLIES

NO	34	17	35.88	5	72	1-536507-1
NO	130	65	131.88	5	264	1-536507-0
NO	106	53	107.88	5	216	536507-9
NO	118	59	119.88	5	240	536507-8
NO	70	35	71.88	5	144	536507-7
NO	58	29	59.88	5	120	536507-6
NO	82	41	83.88	5	168	536507-5
NO	94	47	95.88	5	192	536507-4
NO	46	23	47.88	5	96	536507-3
NO	22	11	23.88	5	48	536507-2
YES	10	5	11.88	5	24	536507-1

POSITIONING PEGS	C	B	A	FINISH	NO OF POSN	PART NUMBER

DO NOT SCALE PRINT. UNLESS SPECIFIED DIMENSIONS IN MILLIMETERS

DR 08/06/92 D.R.BENDER / B6
 CHK 01/26/93 S.HEADER
 APPD 01/26/93 D.R.BAECHTLE
 APPD 01/25/93 D.R.PEOPLES

AMP AMP Incorporated
 Harrisburg, PA 17105-3608

NAME: RECEPTACLE ASSEMBLY, SIGNAL MODULE, Z-PACK 2mm FB, 4 ROW, 2.73mm LEAD LENGTH

PRODUCT SPEC: -
 APPLICATION SPEC: -

FINISH: 3, 5

SIZE: D
 CAGE CODE: 00779
 DRAWING NO: C-536507

WEIGHT: -
 SCALE: 4:1
 SHEET: 1 OF 1

THIS DRAWING IS A CONTROLLED DOCUMENT FOR AMP INCORPORATED. IT IS SUBJECT TO CHANGE AND THE CONTROLLING ENGINEERING ORGANIZATION SHOULD BE CONTACTED FOR THE LATEST REVISION.