

鋁電解電容器

ALUMINUM ELECTROLYTIC CAPACITOR(CD81 RX)

• 紋波倍乘因子 MULTIPLIER FOR RIPPLE CURRENT

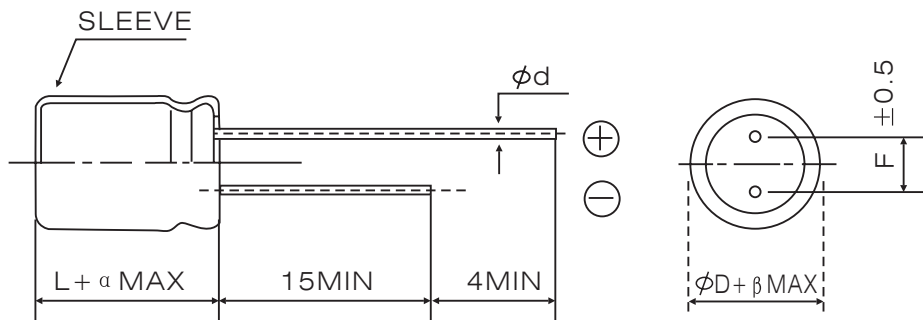
頻率因子 Frequency Coefficient

VV(V)	CV(μ FV)	Freq(Hz)				
		50(60)	100(120)	1K	10K	10K
6.3 - 100	0.1-6.8		0.4	0.7	0.8	1
	10-68		0.5	0.8	0.9	1
	100-220		0.7	0.9	0.9	1
	330-1500		0.8	0.8	1.0	1
	2200-22000		0.9	1.0	1.0	1
160 - 450	1-330	0.8	1	1.3	1.4	1.6

• 溫度因子 TEMPERATURE COEFFICIENT

環境溫度(°C) Ambient Temperature	+105	+85	+65
倍乘因子 Factor	1.0	1.7	2.1

• 外形圖及尺寸表 CASE SIZE TABLE



β	0.5		1.0					
ϕD	5	6.3	8	10	13	16	18	
$F \pm 0.5$	2.0	2.5	3.5	5		7.5		
$\phi d \pm 0.1$	0.5		0.6			0.8		
L	11		12	12 16 20	20 25	25 30 35	30 35 40	
α	1.0		L < 16: 1.5			L > 16: 2.0		

■ RX 尺寸、額定電壓及標稱容量
DIMENSIONS, RATED VOLTAGE AND CAPACITANCE

WV(V) Cap(μF)	6.3(LA)		10(LB)		16(LC)		25(LD)		35(LE)		50(LF)		63(LG)		100(MA)	
	(1)	(2)	(1)	(2)	(1)	(2)	(1)	(2)	(1)	(2)	(1)	(2)	(1)	(2)	(1)	(2)
0.1(R10)											5X11	1.0				
0.15(R15)											5X11	1.9				
0.22(R22)											5X11	2.5				
0.33(R33)											5X11	4				
0.47(R47)											5X11	7				
0.68(R68)											5X11	10				
1(1R0)											5X11	13			5X11	15
1.5(1R5)											5X11	16			5X11	17
2.2(2R2)											5X11	20			5X11	21
3.3(3R3)											5X11	25			5X11	30
4.7(4R7)											5X11	32			5X11	35
6.8(6R8)											5X11	38			5X11	46
10(100)					5X11	35	5X11	36			5X11	47	5X11	48	(5X11) 6.3X11	(60) 60
15(150)					5X11	42	5X11	44			5X11	52	5X11	61	6.3X11	75
22(220)			5X11	45	5X11	54	5X11	58	5X11	61	5X11	70	6.3X11	80	(6.3X11) 8X12	(98) 98
33(330)			5X11	58	5X11	65	5X11	69	5X11	77	6.3X11	94	6.3X11	100	8X12	140
47(470)			5X11	68	5X11	80	5X11	84	(5X11) 6.3X11	(94) 100	6.3X11	115	(6.3X11) 8X12	(140) 140	10X12	185
68(680)			5X11	80	5X11	100	5X11	107	6.3X11	130	8X12	153	8X12	126	10X20	223
100(101)	5X11	96	5X11	105	(5X11) 6.3X11	(100) 130	6.3X11	140	(6.3X11) 8X12	(140) 170	8X12	200	(8X12) 10X12	(230) 230	10X20	290
150(151)	5X11	123	(5X11) 6.3X11	(123) 134	6.3X11	169	8X12	184	8X12	185	10X12	276	10X16	300	13X20	430
220(221)	(5X11) 6.3X11	(160) 175	(5X11) 6.3X11	(170) 175	(6.3X11) 8X12	(210) 220	8X12	240	8X12 (10X12)	(270) 300	(10X12) 10X16	(360) 360	(10X16) 10X12	(390) 390	(13X20) 13X25	(560) 560
330(331)	6.3X11	210	6.3X11	235	(6.3X11) 8X12	(235) 270	(8X12) 10X12	(270) 335	(10X12) 10X16	(400) 440	(10X16) 10X20	(470) 470	(10X20) 13X20	(540) 540	(13X25) 16X25	(690) 690
470(471)	(6.3X11) 8X12	(210) 275	(6.3X11) 8X12	(295) 353	8X12	375	(10X12) 10X16	440)492	(10X16) 10X20	(525) 545	(10X20) 13X20	(600) 600	(13X20) 13X25	(700) 700	(16X25) 16X30	(880) 880
680(681)	8X12	353	10X12	415	10X16	492	10X20	569	13X20	665	13X25	815	16X25	923	18X35	930
1000(102)	8X12	460	(10X12) 10X16	(540) 546	10X16	640	10X20	740	13X20	865	(13X25) 16X25	(1060) 1060	(16X25) 16X30	(1200) 1200	18X40	985
1500(152)	10X16	596	10X20	661	13X20	807	13X25	946	16X25	1053	16X30	1230	18X30	1269		
2200(222)	(10X16) 10X20	(596) 775	10X20	860	13X20	1050	13X25	1230	16X25	1370	(16X30) 16X35	(1600) 1600	(18X35) 18X40	(1650) 1650		
3300(332)	10X20	985	13X20	1100	13X25	1300	16X25	1500	(16X30) 16X35	(1680) 1680	(18X35) 18X40	(1780) 1780				
4700(472)	13X20	1150	13X25	1350	16X25	1650	16X30	1800	(18X30) 18X35	(1870) 1920						
6800(682)	13X25	1480	16X25	1700	16X30	1900	(16X35) 18X35	(1910) 2050								
10000(103)	16X25	1700	(16X30) 16X35	(1950) 1950	(16X35) 18X35	(1950) 2070										
15000(153)	(16X30) 16X35	(2090) 2090	(18X30) 18X35	(2080) 2180												
22000(223)	(18X35) 18X40	(2350) 2350														

鋁電解電容器

ALUMINUM ELECTROLYTIC CAPACITOR(CD81 RX)

WV(V) Cap(μF)	160(MB)		200(MC)		250(MD)		350(MF)		400(VA)		450(VB)	
	(1)	(2)	(1)	(2)	(1)	(2)	(1)	(2)	(1)	(2)	(1)	(2)
1(1R0)	6.3X11	18	6.3X11	17	6.3X11	17	6.3X11	18	(6.3X11) 8X12	(18) 18	8X12	15
1.5(1R5)	6.3X11	23	6.3X11	22	6.3X11	24	8X12	24	8X12	23	8X12	20
2.2(2R2)	6.3X11	29	6.3X11	28	6.3X11	30	(6.3X11) 8X12	(31) 31	(8X12) 10X12	(31) 31	10X12	25
3.3(3R3)	6.3X11	37	(6.3X11) 8X12	(36) 36	(6.3X11) 8X12	(43) 43	(8X12) 10X12	(45) 45	10X12	41	(10X12) 10X16	(33) 33
4.7(4R7)	8X12	47	(6.3X11) 8X12	(50) 50	8X12	53	(10X12) 10X16	(55) 55	10X16	55	(10X16) 10X20	(42) 42
6.8(6R8)	8X12	60	10X12	63	10X12	69	10X20	73	10X20	65	13X20	51
10(100)	8X12 (10X12)	(77) 77	(10X12) 10X16	(80) 80	(10X12) 10X16	(90) 90	10X20	95	(10X20) 13X20	(85) 85	13X20	67
15(150)	10X16	98	10X20	100	10X20	120	13X20	120	13X20	136	13X25	94
22(220)	10X16	125	10X20	135	(10X20) 13X20	(150) 150	(13X20) 13X25	(175) 175	13X25	170	16X25	115
33(330)	10X20	170	(10X20) 13X20	(200) 200	13X20	200	16X25	220	16X25	220	16X30	155
47(470)	13X20	210	13X20	220	13X25	240	(16X25) 16X30	(260) 260	16X30	275	(16X35) 18X30	(185) 185
68(680)	13X25	266	13X25	280	16X25	320	18X30	330	18X30	342		
100(101)	13X25	320	16X25	340	16X30	400	(18X35) 18X40	(415) 415	18X40	415		
150(151)	16X35	430	18X30	430								
220(221)	(16X30) 16X35	(580) 580	(16X35) 18X35	(580) 580								
330(331)	18X35	700										

(1)外形尺寸 Case Size D × L(mm)

(2)最大允許紋波電流 Max allowable ripple current (mA r.m.s./105°C ,120Hz)

鋁電解電容器

ALUMINUM ELECTROLYTIC CAPACITOR(CD82 RT)

• 紋波倍乘因子 MULTIPLIER FOR RIPPLE CURRENT

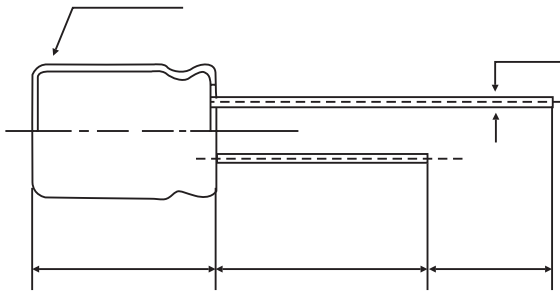
頻率因子 Frequency Coefficient

VV(V)	Freq(Hz)	CV(μF.V)				
		50(60)	100(120)	1K	10K	10K
6.3 ~ 100	0.1-6.8	0.8	1.0	1.0	1.0	1.0
	10-68	0.8	0.5	0.8	0.9	1
	100-220	0.8	0.7	0.9	0.9	1
	330-1500	0.8	0.8	0.8	1.0	1
	2200-10000	0.8	0.9	1.0	1.0	1
160 ~ 450	1-220	0.8	1	1.3	1.4	1.6

• 溫度因子 TEMPERATURE COEFFICIENT

環境溫度(°C) Ambient Temperature	+105	+85	+65
倍乘因子 Factor	1.0	1.7	2.1

• 外形圖及尺寸表 CASE SIZE TABLE



β	0.5		1.0				
ϕD	5	6.3	8	10	13	16	18
$F \pm 0.5$	2.0	2.5	3.5	5		7.5	
$\phi d \pm 0.1$	0.5		0.6			0.8	
L	11		12	12 16 20	20 25	25 30 35	30 35 40
α	1.0		L < 16: 1.5			L ≥ 16: 2.0	

RT 尺寸、額定電壓及標稱容量
DIMENSIONS, RATED VOLTAGE AND CAPACITANCE

WV(V) Cap(uF)	6.3(LA)		10(LB)		16(LC)		25(LD)		35(LE)		50(LF)		63(LG)		100(MA)	
	(1)	(2)	(1)	(2)	(1)	(2)	(1)	(2)	(1)	(2)	(1)	(2)	(1)	(2)	(1)	(2)
0.47(R47)											5X11	7			5X11	10
0.68(R68)											5X11	10			5X11	12
1(1R0)											5X11	12			5X11	15
1.5(1R5)											5X11	16			5X11	17
2.2(2R2)											5X11	18			5X11	22
3.3(3R3)											5X11	25			5X11	29
4.7(4R7)							5X11	24	5X11	27	5X11	30	5X11	34	5X11	37
6.8(6R8)							5X11	39	5X11	31	5X11	38	5X11	45	6.3X11	46
10(100)					5X11	35	5X11	39	5X11	44	5X11	50	5X11	55	6.3X11	65
15(150)					5X11	41	5X11	47	5X11	51	5X11	52	6.3X11	60	8X12	75
22(220)	5X11	34	5X11	45	5X11	54	5X11	58	5X11	65	5X11	75	6.3X11	90	8X12	115
33(330)	5X11	55	5X11	58	5X11	65	5X11	69	5X11	85	6.3X11	105	6.3X11	110	10X12	160
47(470)	5X11	65	5X11	70	5X11	80	5X11	84	6.3X11	115	6.3X11	125	8X12	155	10X16	210
68(680)	5X11	74	5X11	80	6.3X11	100	6.3X11	107	6.3X11	130	8X12	153	8X12	170	10X20	230
100(101)	5X11	100	5X11	105	6.3X11	130	6.3X11	140	8X12	190	8X12	210	10X12	260	13X20	385
150(151)	6.3X11	123	6.3X11	134	6.3X11	169	8X12	184	8X12	230	10X16	276	10X20	320	13X25	450
220(221)	6.3X11	160	6.3X11	175	8X12	220	8X12	240	10X12	325	10X16	400	10X20	465	16X25	590
330(331)	6.3X11	210	8X12	250	8X12	270	10X12	355	10X16	440	10X20	535	13X20	650	16X25	720
470(471)	8X12	285	8X12	295	10X12	395	10X16	470	10X20	580	13X20	730	13X25	800	16X30	875
680(681)	8X12	353	10X16	415	10X16	492	10X20	569	13X20	660	13X25	815	16X25	923	18X35	1120
1000(102)	10X12	460	10X16	540	10X20	700	13X20	855	13X25	995	16X25	1110	16X30	1200	18X40	1320
1500(152)	10X20	596	10X20	700	13X20	807	13X25	946	16X25	1053	16X30	1230	18X30	1560		
2200(222)	13X20	925	13X20	1000	13X25	1150	16X25	1230	16X30	1450	18X35	1530	18X40	1840		
3300(332)	13X20	1100	13X25	1220	16X25	1300	16X30	1450	18X35	1660						
4700(472)	16X25	1320	16X25	1410	16X30	1560	18X35	1660	18X40	2030						
6800(682)	16X25	1480	16X30	1610	18X35	1750										
10000(103)	16X30	1820	18X35	1950	18X40	2150										

鋁電解電容器

ALUMINUM ELECTROLYTIC CAPACITOR(CD82 RT)

WV(V) Cap(μF)	160(MB)		200(MC)		250(MD)		350(MF)		400(VA)		450(VB)	
	(1)	(2)	(1)	(2)	(1)	(2)	(1)	(2)	(1)	(2)	(1)	(2)
1(1R0)	6.3X11	17	6.3X11	17	6.3X11	17	10X12	17	10X12	16	10X12	18
1.5(1R5)	6.3X11	20	6.3X11	20	6.3X11	24	10X12	24	10X12	23	10X16	21
2.2(2R2)	6.3X11	25	6.3X11	25	8X12	29	10X16	31	10X16	27	10X20	29
3.3(3R3)	8X12	36	8X12	36	10X12	42	10X16	38	10X20	36	13X20	41
4.7(4R7)	8X12	43	10X12	50	10X12	50	10X20	49	10X20	43	13X20	49
6.8(6R8)	10X12	52	10X16	32	10X16	69	10X20	73	13X20	60	13X25	60
10(100)	10X12	70	10X16	80	10X20	88	13X20	82	13X25	72	16X25	75
15(150)	10X20	54	10X20	110	13X20	120	13X25	120	13X25	90	16X25	95
22(220)	10X20	130	10X20	140	13X25	155	16X25	130	16X25	110	16X30	115
33(330)	13X20	180	13X25	190	13X25	190	16X30	160	16X30	140	18X35	145
47(470)	13X25	220	13X25	220	16X25	230	18X35	200	18X35	170		
68(680)	16X25	140	16X25	270	16X30	320						
100(101)	16X25	330	16X30	335	18X35	340						
150(151)	18X30	420	18X35	420								
220(221)	18X35	500	18X40	515								

(1)外形尺寸 Case Size D × L(mm)

(2)最大允許紋波電流 Max allowable ripple current (mA r.m.s./105℃ ,120Hz)

■
*
*
*
■

項目										
額定工作 Rated Volt										
使用温 Operating Temp										
標稱靜										

鋁電解電容器

ALUMINUM ELECTROLYTIC CAPACITOR(CD83 RG)

• 紋波倍乘因子 MULTIPLIER FOR RIPPLE CURRENT

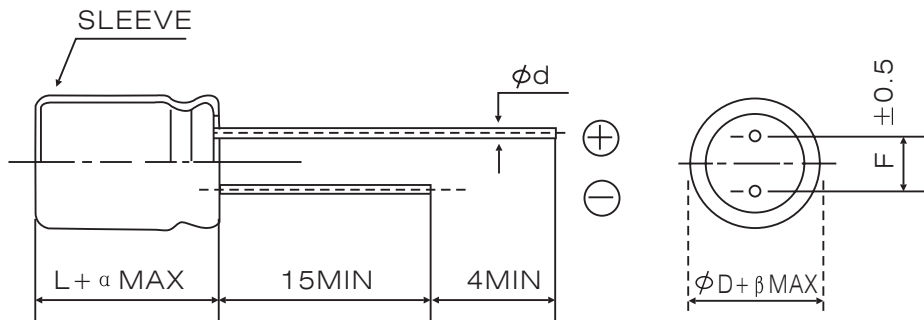
頻率因子 Frequency Coefficient

VV(V)	CV(μF.V)	Freq(Hz)				
		50(60)	100(120)	1K	10K	10K
6.3 - 100	0.47-6.8	0.8	0.4	0.7	0.8	1
	10-68	0.8	0.5	0.8	0.9	1
	100-220	0.8	0.7	0.9	0.9	1
	330-1500	0.8	0.8	0.8	1.0	1
	2200-15000	0.8	0.9	1.0	1.0	1
160 - 450	1-220	0.8	1.0	1.3	1.4	1.6

• 溫度因子 TEMPERATURE COEFFICIENT

環境溫度(°C) Ambient Temperature	+105	+85	+65
倍乘因子 Factor	1.0	1.7	2.1

• 外形圖及尺寸表 CASE SIZE TABLE



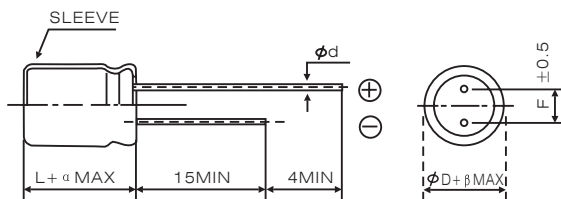
β	0.5			1.0			
φD	5	6.3	8	10	13	16	18
F ± 0.5	2.0	2.5	3.5	5		7.5	
φd ± 0.1	0.5			0.6		0.8	
L	11	12	12	16	20	20	25
α	1.0			L < 16: 1.5		L ≥ 16: 2.0	

RG 尺寸、額定電壓及標稱容量

DIMENSIONS, RATED VOLTAGE AND CAPACITANCE

WV(V) Cap(uF)	6.3(LA)		10(LB)		16(LC)		25(LD)		35(LE)		50(LF)		63(LG)		100(MA)	
	(1)	(2)	(1)	(2)	(1)	(2)	(1)	(2)	(1)	(2)	(1)	(2)	(1)	(2)	(1)	(2)
0.47(R47)																
0.68(R68)																
1(1R0)																
1.5(1R5)																
2.2(2R2)																
3.3(3R3)																
4.7(4R7)																
6.8(6R8)																
10(100)																
15(150)																
22(220)																
33(330)																
47(470)																
68(680)																
100(101)																
150(151)																
220(221(330)																
1.245768(R68)																

• 外形圖及尺寸表 CASE SIZE TABLE



β	0.5		1.0					
ϕD	6.3	8	10	13	16	18		
$F \pm 0.5$	2.5	3.5	5.0			7.5		
$\phi d \pm 0.1$	0.5		0.6			0.8		
L	11	12	12 16 20	20 25	25 30	30 35 40		
α	1.0		$L < 16: 1.5$			$L \geq 16: 2.0$		

■ RK 尺寸、額定電壓及標稱容量

DIMENSIONS, RATED VOLTAGE AND CAPACITANCE

WV(V) Cap(uF)	10(LB)		16(LC)		25(LD)		35(LE)		50(LF)		63(LG)		100(MA)	
	(1)	(2)	(1)	(2)	(1)	(2)	(1)	(2)	(1)	(2)	(1)	(2)	(1)	(2)
0.47(R47)									8×12	8			8×12	10
1(1R0)									8×12	10			8×12	21
2.2(2R2)									8×12	23			8×12	46
3.3(3R3)									8×12	35	8×12	44	10×12	64
4.7(4R7)									8×12	50	8×12	60	10×12	77
10(100)									8×12	87	8×12	87	10×20	132
22(220)							8×12	101	10×12	121	10×12	121	13×25	234
33(330)					8×12	110	10×12	138	10×12	138	10×16	169		
47(470)			8×12	117	8×12	117	10×12	149	10×16	188	10×20	218		
100(101)	8×12	123	10×12	158	10×16	203	10×20	268	13×20	311	13×25	379		
220(221)	10×16	214	10×20	275	10×20	279	13×25	434						
330(331)	10×16	224	13×20	360	13×25	425								
470(471)	10×20	242	13×25	462										
1000(102)	13×20	474												

WV(V) Cap(uF)	160(MB)		200(MC)		250(MD)		350(MF)		400(VA)		450(VB)	
	(1)	(2)	(1)	(2)	(1)	(2)	(1)	(2)	(1)	(2)	(1)	(2)
1(1R0)	6.3×11	17	6.3×11	16	6.3×11	17	10×12	17	10×12	16	10×12	18
1.5(1R5)	6.3×11	20	6.3×11	20	6.3×11	24	10×12	24	10×12	23	10×16	21
2.2(2R2)	6.3×11	25	6.3×11	25	8×12	29	10×16	31	10×16	27	10×20	29
3.3(3R3)	8×12	36	8×12	36	10×12	42	10×16	38	10×20	36	13×20	41
4.7(4R7)	8×12	43	10×12	50	10×12	50	10×20	49	10×20	43	13×20	49
6.8(6R8)	10×12	52	10×16	62	10×16	69	10×20	73	13×20	60	13×25	60
10(100)	10×12	70	10×16	80	10×20	88	13×20	82	13×25	72	16×25	75
15(150)	10×20	90	10×20	110	13×20	120	13×25	120	13×25	90	16×25	95
22(220)	10×20	130	10×20	140	13×25	155	16×25	130	16×25	110	16×30	115
33(330)	13×20	180	13×25	190	13×25	190	16×30	160	16×30	140	18×35	145
47(470)	13×25	220	13×25	225	16×25	230	18×35	200	18×35	170		
68(680)	16×25	280	16×25	270	16×30	320						
100(101)	16×25	330	16×30	335	18×35	340						
150(151)	18×30	420	18×35	420								
220(221)	18×35	500	18×40	515								

(1)外形尺寸 Case Size D × L(mm)

(2)最大允許紋波電流 Max allowable ripple current (mA r.m.s./105°C , 120Hz)