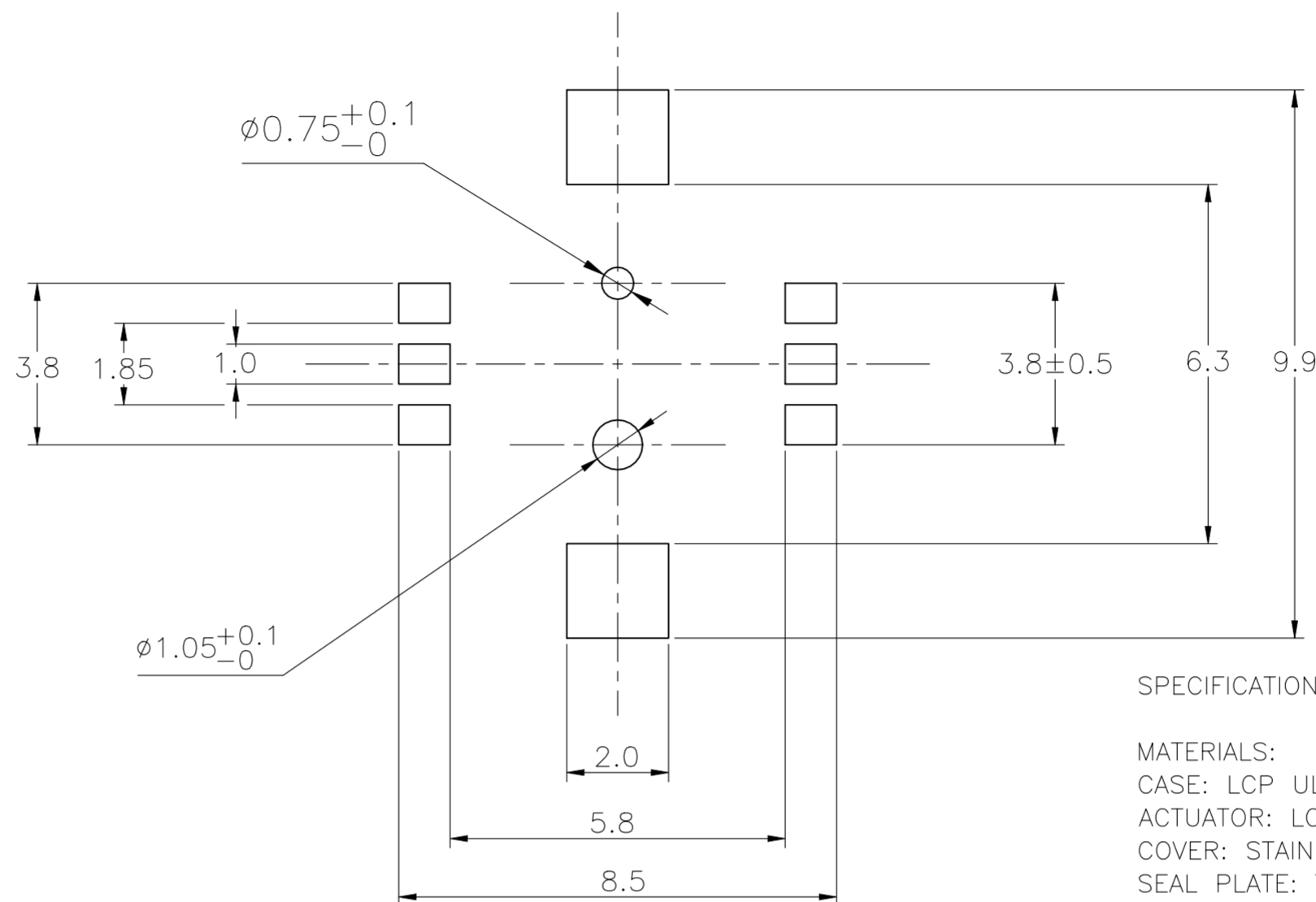
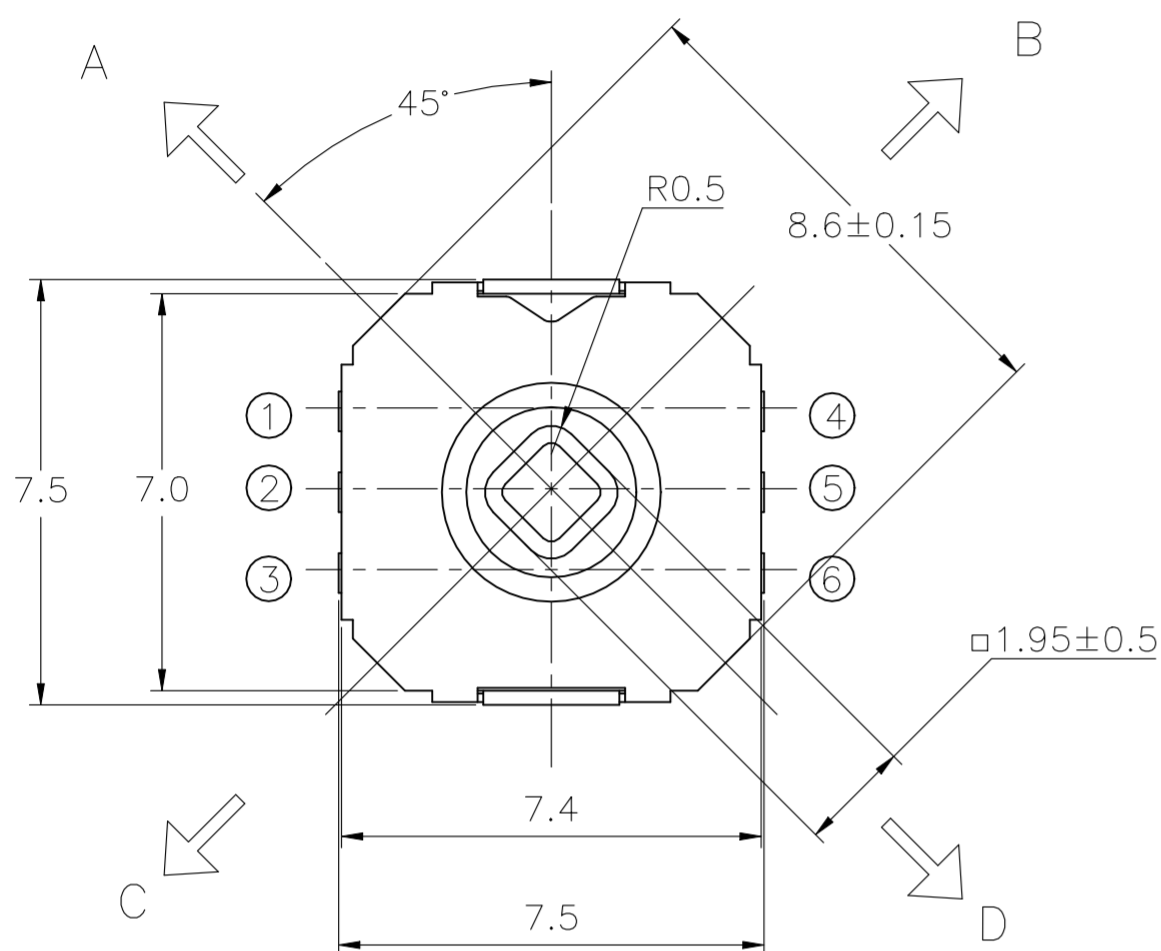


DRAWING NUMBER	TE PN	TE DESCRIPTIVE PN	IP	OPERATING FORCE	LIFE CYCLE
2434804	2434804-1	5 position tactile, 7.5x7.5	40	Center Push: 360 ±70 gf, Travel: 0.2 <sup>+0.15</sup> / <sub>-0.05</sub> mm 4-Way Direction: 240 ±70 gf, Travel: 0.35 <sup>+0.3</sup> / <sub>-0.2</sub> mm	1,00,000

REVISIONS					
P	LTR	DESCRIPTION	DATE	DWN	APVD
A		INITIAL RELEASE	09NOV2022	BB	DM



P.C.B LAND DIMENSION

SPECIFICATIONS:

MATERIALS:

CASE: LCP UL94V-0  
 ACTUATOR: LCP UL94V-0  
 COVER: STAINLESS STEEL. Sn PLATED. STEM: PPA UL94HB  
 SEAL PLATE: TEFLON TAPE.  
 MOVING CONTACT: STAINLESS STEEL Ag Clad  
 FIXED CONTACT/TERMINAL: PHOSPHOR BRONZE Ag PLATING

ELECTRICAL:

CONTACT RATING: 50mA @12V DC MAX.  
 CONTACT RESISTANCE: 100mΩ MAX.  
 INSULATION RESISTANCE: 100MΩ MIN. @100V DC.  
 DIALECTRIC STRENGTH: 100V AC FOR 1 MINUTE.  
 LIFE EXPECTANCY: SEE P/N TABLE.

MECHANICAL:

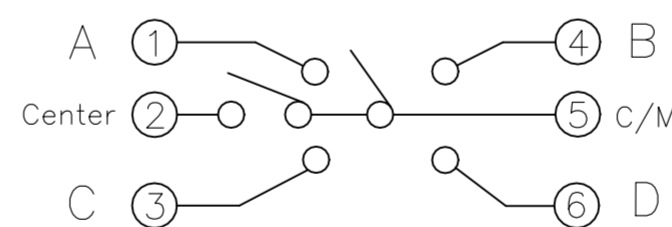
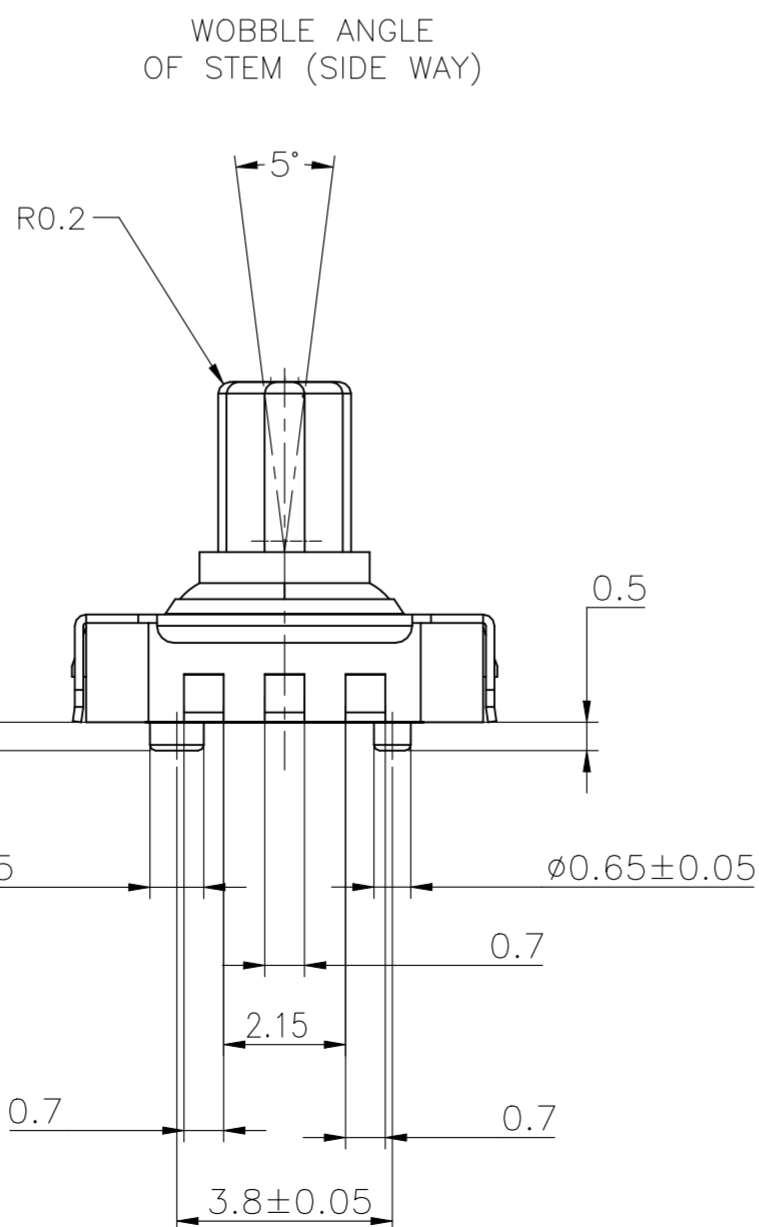
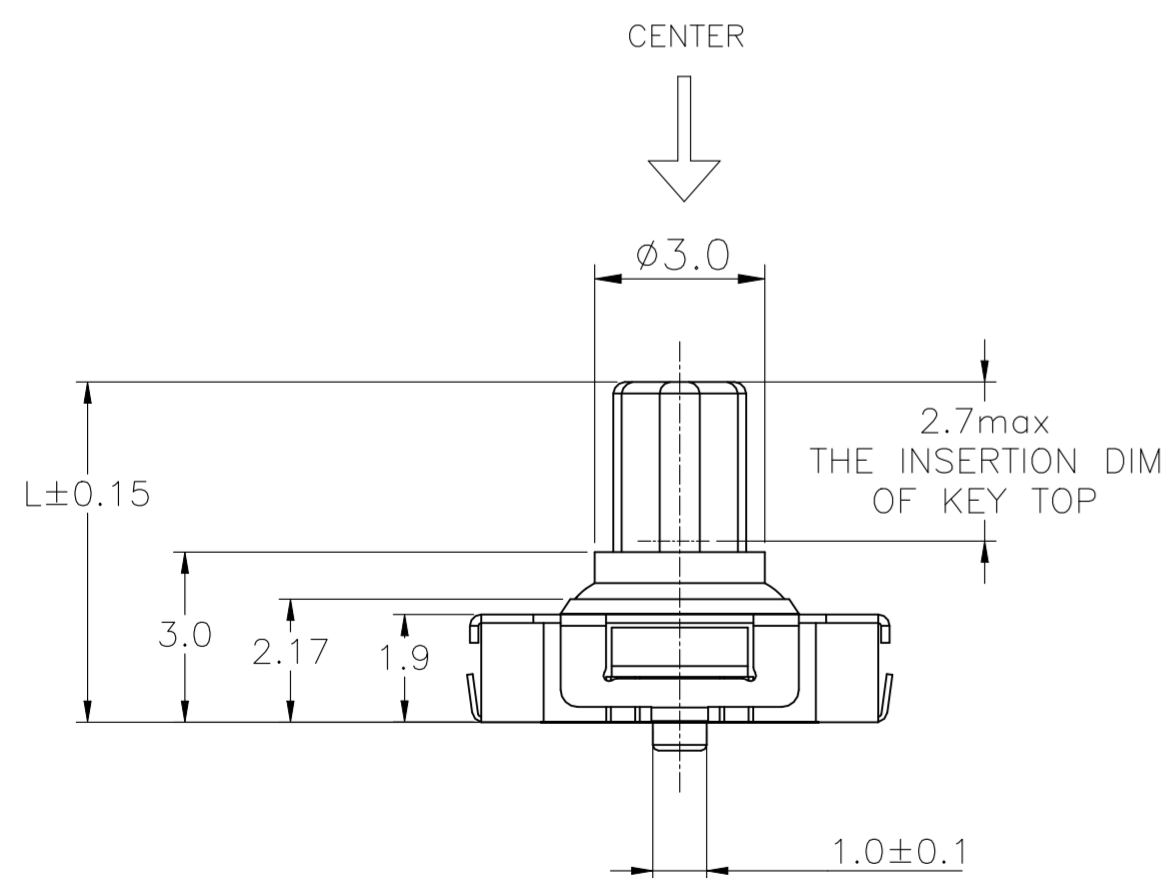
ACTUATOR FORCE: SEE P/N TABLE.  
 ACTUATOR TRAVEL: SEE P/N TABLE.  
 LIFE EXPECTANCY: SEE P/N TABLE.

ENVIRONMENTAL:

OPERATING TEMPERATURE: -40°C TO 85°C.  
 STORAGE TEMPERATURE: -40°C TO 90°C.  
 SOLDERABILITY: REFLOW: FOR PERHEAT 150-200°C. 120±20SEC., PEAK TEMP. 260°C MAX 10 SEC, TEMP. AREA 217°C 90-120°C.

NOTES:

- DIMENSIONS IN MILLIMETERS
- GENERAL TOLERANCE ±0.3mm

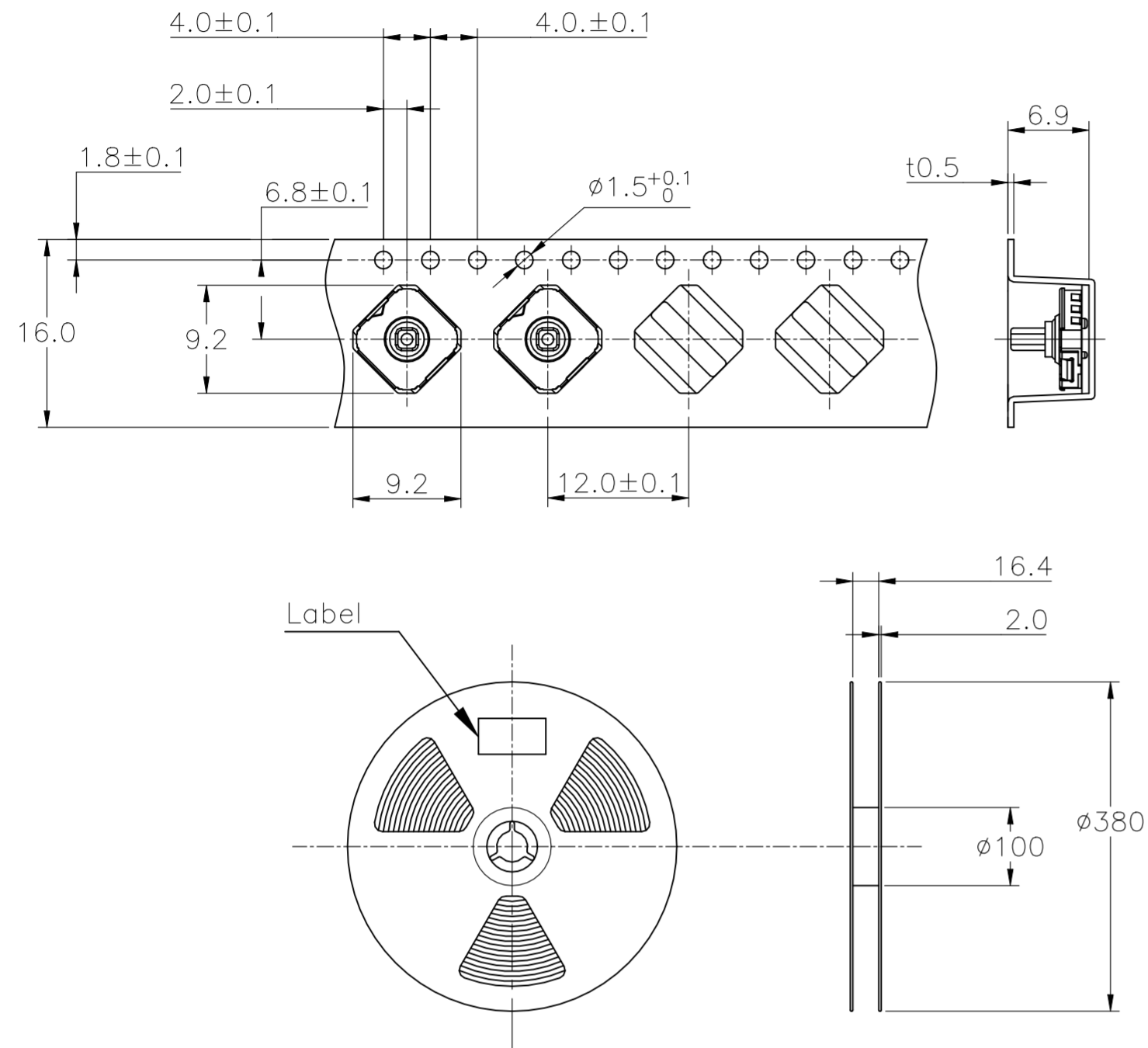


CIRCUIT DIAGRAM

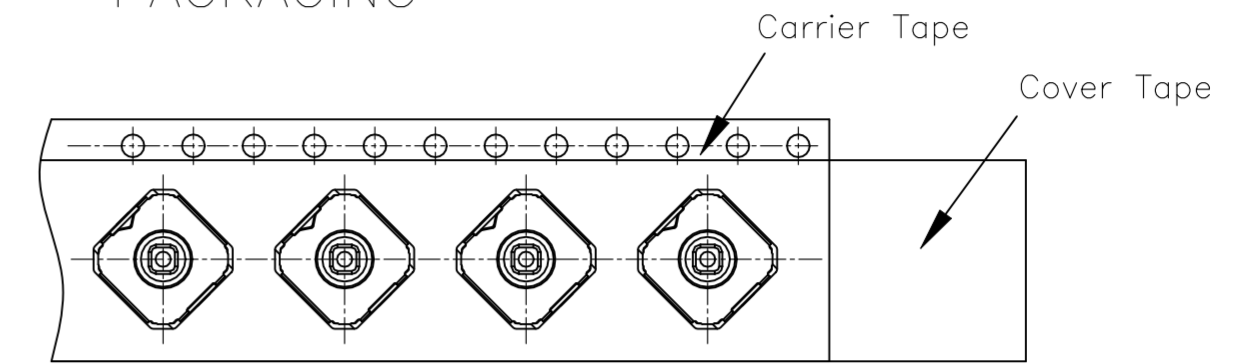
THIS DRAWING IS A CONTROLLED DOCUMENT.		DWN BALAJI, B	09NOV2022		TE Connectivity		
DIMENSIONS: mm		CHK DAVID MALDONADO	09NOV2022		NAME 5 POSITION TACTILE, 7.5X7.5		
TOLERANCES UNLESS OTHERWISE SPECIFIED:		APVD DAVID MALDONADO	09NOV2022		PRODUCT SPEC		
0 PLC ± - 1 PLC ± - 2 PLC ± - 3 PLC ± - 4 PLC ± - ANGLES ± -		APPLICATION SPEC			SIZE A2		
MATERIAL		FINISH		WEIGHT	CAGE CODE 00779	DRAWING NO C=2434804	
CUSTOMER DRAWING				SCALE NTS	SHEET 1 of 2	REV A	

REVISIONS					
P	LTR	DESCRIPTION	DATE	DWN	APVD
-	-	SEE SHEET 1	-	-	-

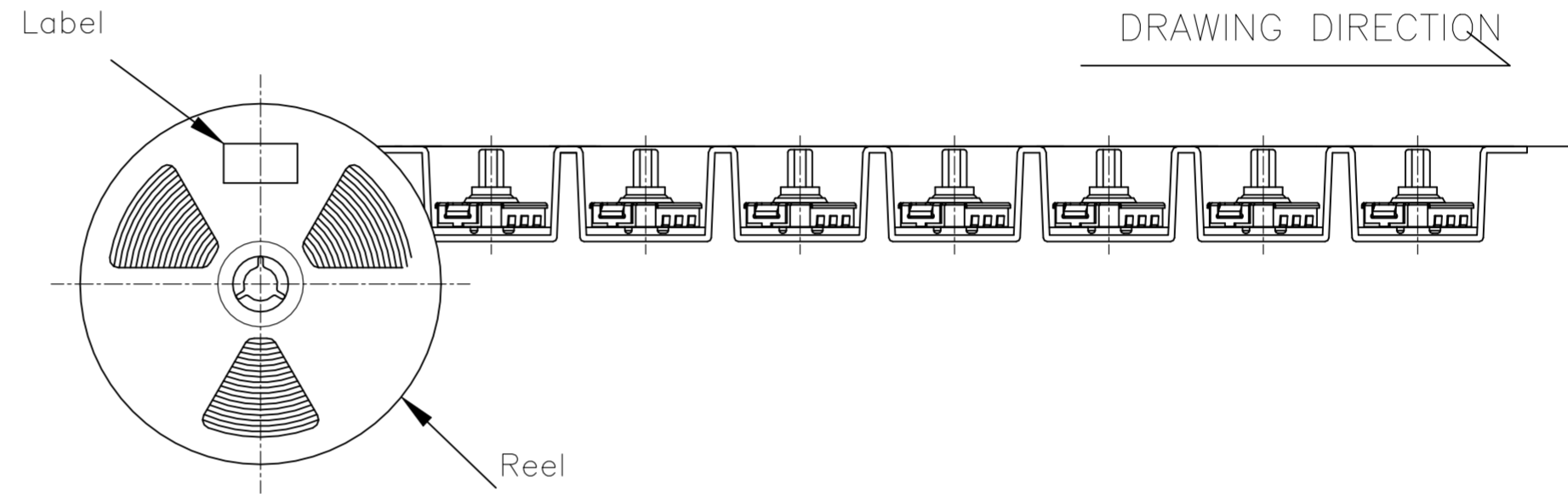
\* THE DIMENSION OF CARRIER TAPE, COVER TAPE AND REEL \*



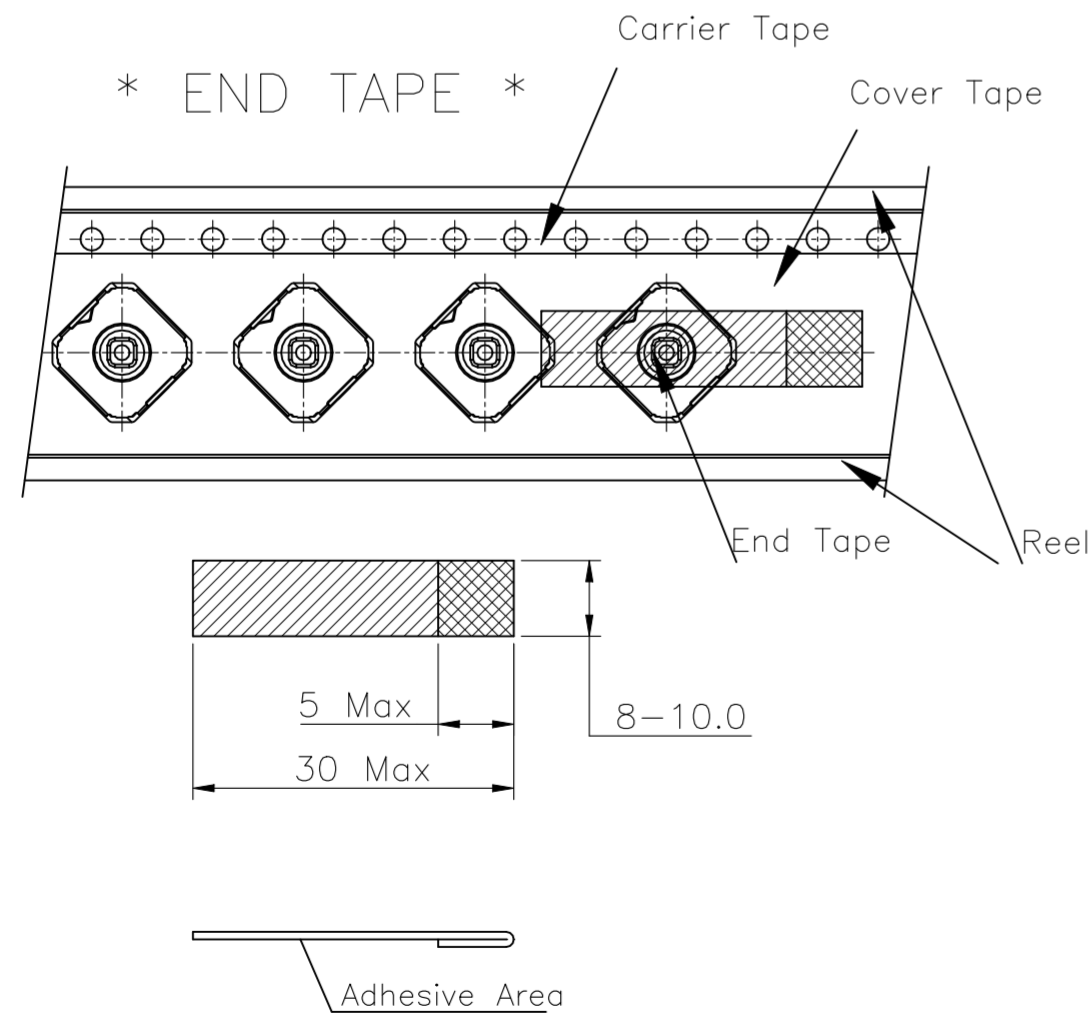
\* THE SPECIFICATION FOR PACKAGING \*



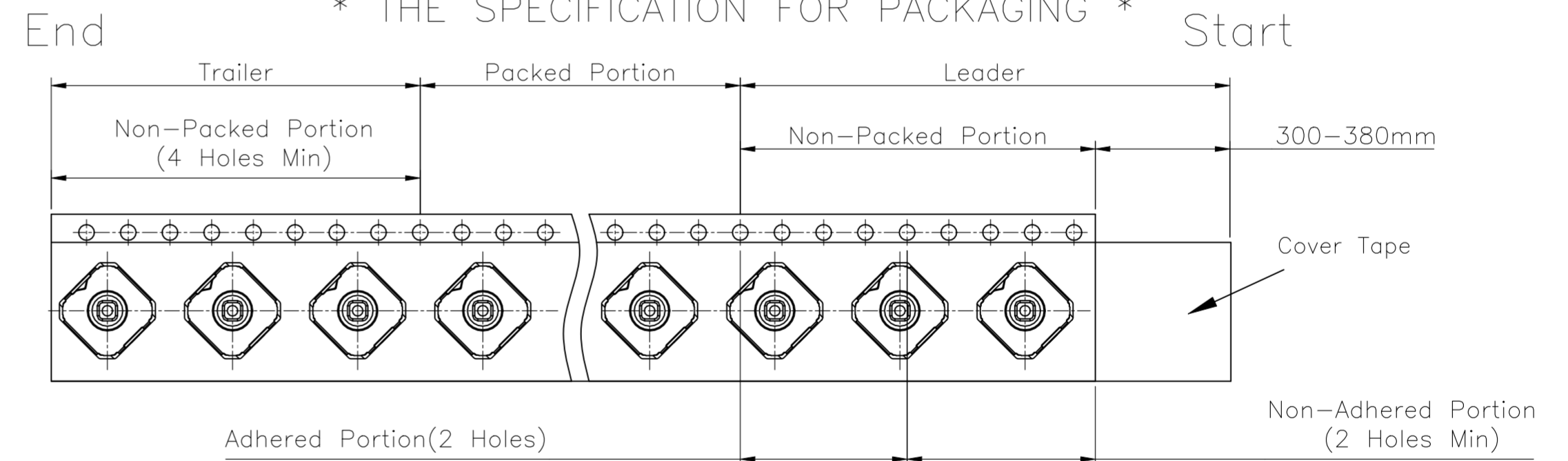
DRAWING DIRECTION



\* END TAPE \*



\* THE SPECIFICATION FOR PACKAGING \*



NOTE

- 1,000 PCS SWITCHES PER 1 REEL
- GENERAL TOLERANCE : 0.2mm

THIS DRAWING IS A CONTROLLED DOCUMENT.		DWN BALAJI, B 09NOV2022																				
DIMENSIONS: mm		CHK DAVID MALDONADO 09NOV2022																				
TOLERANCES UNLESS OTHERWISE SPECIFIED:		APVD DAVID MALDONADO 09NOV2022	NAME 5 POSITION TACTILE, 7.5X7.5																			
<table border="1"> <tr><td>0 PLC</td><td>±</td><td>-</td></tr> <tr><td>1 PLC</td><td>±</td><td>-</td></tr> <tr><td>2 PLC</td><td>±</td><td>-</td></tr> <tr><td>3 PLC</td><td>±</td><td>-</td></tr> <tr><td>4 PLC</td><td>±</td><td>-</td></tr> <tr><td>ANGLES</td><td>±</td><td>-</td></tr> </table>		0 PLC	±	-	1 PLC	±	-	2 PLC	±	-	3 PLC	±	-	4 PLC	±	-	ANGLES	±	-	PRODUCT SPEC -	SIZE A2	
0 PLC	±	-																				
1 PLC	±	-																				
2 PLC	±	-																				
3 PLC	±	-																				
4 PLC	±	-																				
ANGLES	±	-																				
MATERIAL -		FINISH -	APPLICATION SPEC -	CAGE CODE 00779																		
		WEIGHT -	DRAWING NO C=2434804	RESTRICTED TO -																		
CUSTOMER DRAWING			SCALE NTS	SHEET 2 OF 2																		
			REV A																			