



Get Switched On to Outdoor Safety!

WEATHERSAFE
IP66
R A T I N G



SIMPS
Safety Isolator Mains Protection Switch

A tough and durable range of weatherproof switches, sockets and fused connection units for outdoor installations.

3 THREE YEAR GUARANTEE

OUTDOOR MULTI-CONNECTOR BOX.
See inside for details.



Weathersafe Outdoor Power

What is Timeguard Weathersafe®?

Whenever sockets and switches are installed outside or in public spaces, extra protection is called for



to ensure that the installation is reliable, electrically safe and secure against vandalism and theft.



The Timeguard Weathersafe® range of switched sockets and fused connection units covers all three areas of concern (patents granted) providing all the reassurance that you need.

Reliable and Durable.

Timeguard Weathersafe® sockets and switches offer IP66 protection against the elements of dust and rain, splashing water, hose directed water and external ice formation, and are therefore more than equal to UK weather conditions!



The tough impact resistant housings with neoprene seals mean that you can expect years of good service from even the toughest environments where the occasional impact is only to be expected.



Safety and Security.

Timeguard insisted that unique safety features were built-in when designing Timeguard Weathersafe®. The result is a special unique mains isolation switch **SIMPS** which isolates the power supply when the housing is opened.

This option makes Timeguard Weathersafe® the ideal outdoor sockets of choice for use in public buildings and open spaces.



Also, twin gang RCD protected switched socket versions offer additional protection against the dangers of electrocution for use with a whole series of outdoor power equipment, including lawnmowers, hedge trimmers, power washers etc.

To provide additional security, Timeguard's lockable covers keep vandals OUT and also ensure that only authorised persons use the power supply that, in these days of rising fuel prices and levies, is no minor concern! The fixing screws are hidden behind the lockable cover for extra safety and security.



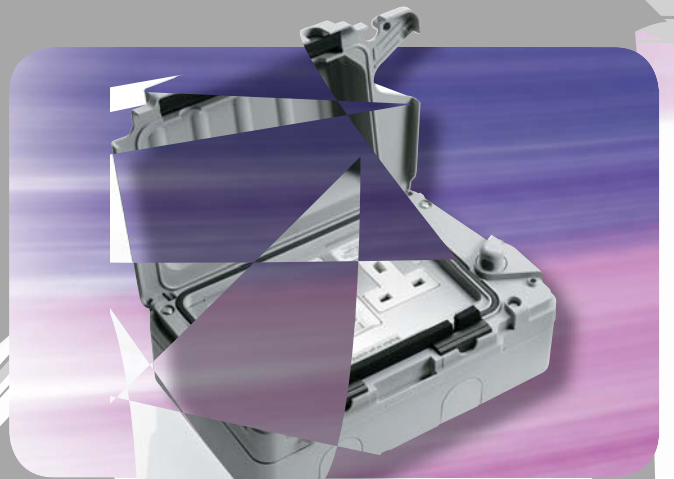
True to form for Timeguard, the range is easy to install, with multiple replaceable knock out cable entries.

Availability and Choice.

See opposite for our complete range of switches, sockets and fused connection units.

Visit our website: www.timeguard.com

Weathersafe Outdoor Power

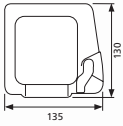


WR20-57

cket

Single Gang Switched Socket

- 13 amp single gang switched socket.
- 4 x 20mm cable entries.
- Earth terminal and loop terminal in back box.
- Complies with BS1363.
- IP66 weatherproof rating.
- Impact resistant housing.
- Locking boss feature.
- **Part No. WP101**



WP101

Single Gang Isolated Switched Socket

- 13 amp single gang switched socket.
- 4 x 20mm cable entries.
- Earth terminal and loop terminal in back box.
- Complies with BS1363.
- IP66 weatherproof rating.
- Impact resistant housing.
- Locking boss feature.
- Mains isolator switch ensures supply isolation before opening lid.
- **Part No. WP102**



WP102

SIMPS
Safety Isolator Mains Protection Switch

Single Gang DP Fused Connection Unit

- 13 amp DP single gang switched fuse.
- 4 x 20mm cable entries.
- Fitted with 13A fuse link to BS1362.
- Earth terminal in back box.
- Complies with BS1363.
- IP66 weatherproof rating.
- Impact resistant housing.
- Locking boss feature.
- **Part No. WP103**



WP103

Single Gang RCD Fused Connection Unit

- 4 x 20mm cable entries.
- Earth terminal and loop terminal in back box.
- Automatically disconnects both Live and Neutral connections leaving Earth connection intact.
- Extra fast action - trips out within 40 milliseconds (BS7288).
- Test button for safety checks.
- Complies with BS7288 and BS1363.
- Contacts remain latched when power supply is temporarily lost.
- IP66 weatherproof rating.
- Impact resistant housing.
- Locking boss feature.
- **Part No. WP104**



WP104

WEATHERSAFE
IP66
R A T I N G

Single Gang TR610TOP DIN Timer

- Enclosed 24Hr/7 Day single channel (2 module size) 16(10)A digital timeswitch.
- Text Oriented Programming.
- 14 ON/OFF programmes per week.
- ON/OFF times may be repeated over a number of days without using extra memory locations.
- Automatic Summer/Winter changeover.
- Integral Lithium cell power reserve with 4 years life.
- Manual override to next programme change and permanent ON/OFF switching.
- 4 x 20mm cable entries.
- Earth terminal and loop terminal in back box.
- Complies with BSEN60730.
- IP66 weatherproof rating.
- Impact resistant housing.
- Locking boss feature.
- **Part No. WP105**



WP105/
WP106

Single Gang SEL170TOP DIN Solar Timer

Shares all the features of the WP105 Single Gang TR610TOP DIN Timer above, plus:

- Enclosed Solar Timeswitch.
- Precise astronomic calculation of sunrise and sunset times by entering date, time and location co-ordinates (latitude/longitude or country/city).
- Lights are switched ON and OFF according to sunrise and sunset times and can be shifted 120 minutes from these in either direction.
- Factory set time and date.
- 10 years battery reserve.
- Energy saving night switching.
- Daily switching times are presented graphically on the LCD by a bar chart.
- **Part No. WP106**

Single Gang 2 Way Switch (SP)

- 10 amp (fluorescent rated) 1 gang SP 2-way.
- 4 x 20mm cable entries.
- Earth terminal and loop terminal in back box.
- Complies with BS3676.
- IP66 to BSEN 60529.
- Impact resistant housing.
- **Part No. WPL01**



WPL01

Twin Gang 2 Way Switch (SP)

- 10 amp (fluorescent rated) 2 gang SP 2-way.
- 4 x 20mm cable entries.
- Earth terminal and loop terminal in back box.
- Complies with BS3676.
- IP66 to BSEN 60529.
- Impact resistant housing.
- **Part No. WPL02**



WPL02

Single Gang Switch - Bell Push

- 10 amp (fluorescent rated) 1 gang SP 2-way.
- Push to make or push to break bell.
- **Part No. WPL03**



WPL03/
WPL04

Single Gang DP Switch

- 10 amp (fluorescent rated) 1 gang DP 2-way press.
- **Part No. WPL04**

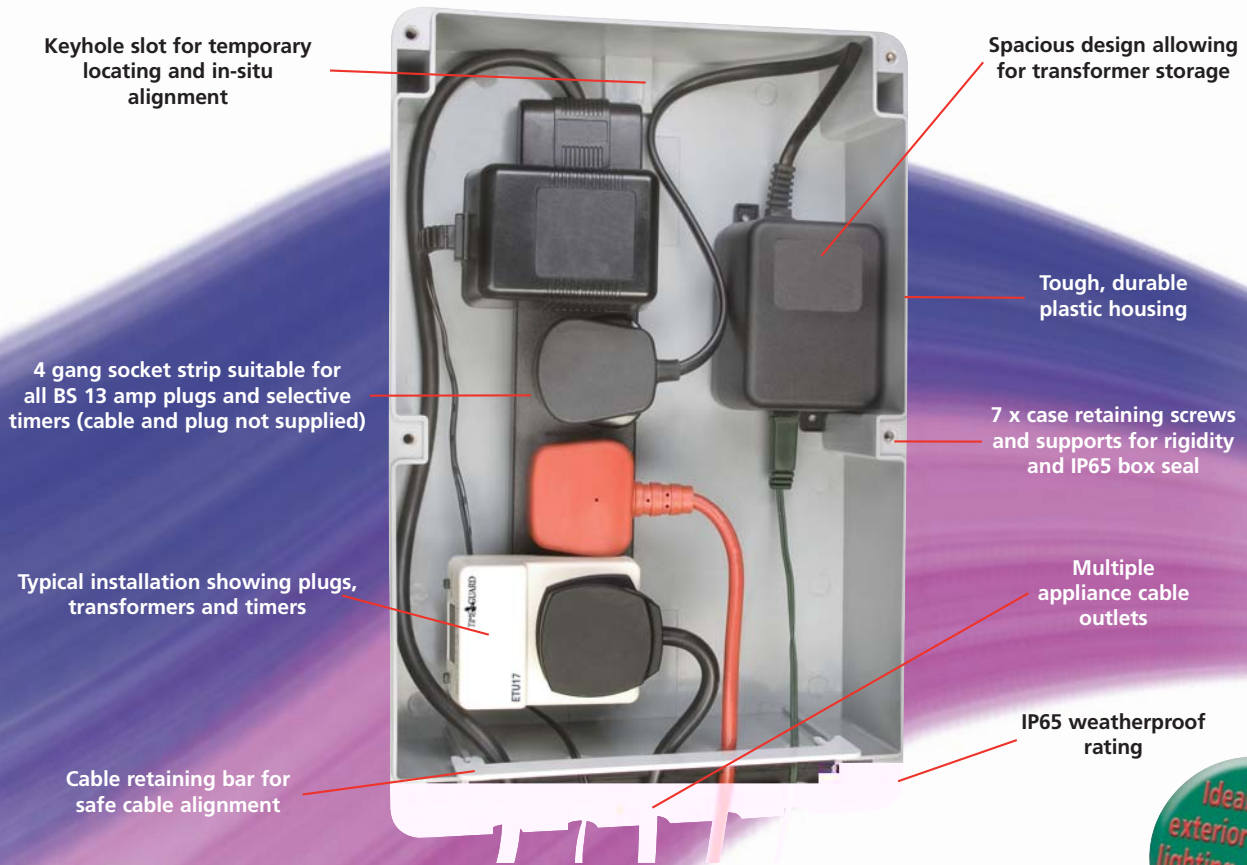
Visit our website: www.timeguard.com

Outdoor Multi-Connector Box

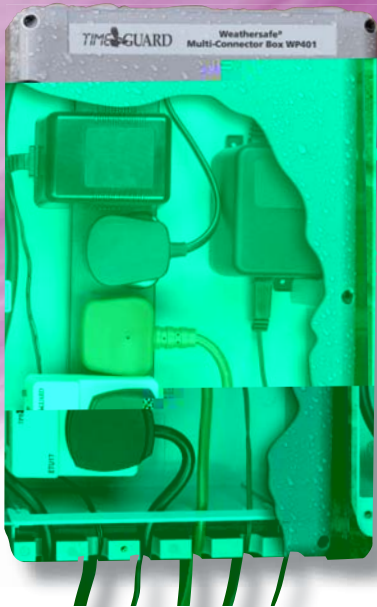
Comes complete with a 4 way, 13 amp socket strip providing the ideal solution for outdoor plug-in power. Ideal for transformer linked garden lighting, fountain pumps, pool filters etc.

- Tough and durable housing.
- 1 x 20mm cable knock out (mains into socket strip).

- Up to 5 x cable seal outlets (to appliances).
- IP65 weatherproof rating.
- Keyhole slot for temporary locating and insitu alignment.
- Size: 335mm (H) x 220mm (W) x 107mm (D).
- **Part No. WP401**



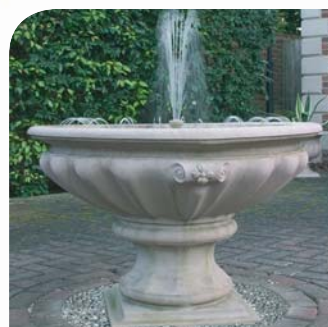
Ideal for all exterior seasonal lighting - whatever the weather!



Size:
335mm (H) x 220mm (W)
x 107mm (D)

WEATHERSAFE
IP65
RATING

3 THREE YEAR
GUARANTEE



Visit our website: www.timeguard.com

Product Specifications



| | | WP101 | WP102 | WP103 | WP104 | WP105 | WP106 |
|---------------------------|-----------------------------------------|----------------|-------------------|----------------|----------------|----------------|----------------|
| Type | | Switched | Isolated Switched | Spur Fused | RCD Fused | DIN Timer | Solar Timer |
| Operating Voltage | 230V AC | • | • | • | • | • | • |
| Rocker Switch Poles | | 2 | 2 | 2 | | | |
| Rocker Switch Rating | 230V 13 Amp (3kW) | • | • | • | • | • | • |
| Operating Temperature | 0° to 40° C | • | • | • | • | • | • |
| Integral BS1362 Fuse | | | | • | • | | |
| Trip Speed | BS7288 - 40ms | | | | • | | |
| RCD Contact Break | Double Pole | | | | 2 Pole | | |
| Continues to Protect With | Lost neutral & pulsating DC earth fault | | | | • | | |
| Cable Capacity | 3 x 2.5mm ² | • | • | • | • | • | • |
| Conforms To BS | BS1363, BS7288 (RCD) | • | • | • | • | BSEN60730 | BSEN60730 |
| Dimensions (mm) | Height x Width x Depth | 130 x 135 x 80 | 130 x 135 x 80 | 130 x 135 x 80 | 130 x 135 x 80 | 130 x 135 x 80 | 130 x 135 x 80 |



| | | WP201 | WP202 | WP203 | WP204 | WP205 | WP401 |
|---------------------------|-----------------------------------------|----------------|-------------------|----------------|----------------|----------------|------------------------|
| Type | | Switched | Isolated Switched | Isolated Timer | RCD Latching | RCD | Connector Box |
| Operating Voltage | 230V AC | • | • | • | • | • | • |
| Rocker Switch Poles | | 2 | 2 | | 1 | 1 | |
| Rocker Switch Rating | 230V 13 Amp (3kW) | • | • | • | • | • | |
| Operating Temperature | 0° to 40° C | • | • | • | • | • | • |
| Trip Speed | BS7288 - 40ms | | | | • | • | |
| RCD Contact Break | Double Pole | | | | 2 Pole | 2 Pole | |
| Continues to Protect with | Lost neutral & pulsating DC earth fault | | | | • | • | |
| Cable Capacity | 3 x 2.5mm ² | • | • | • | • | • | 5 x 2.5mm ² |
| Conforms To BS | BS1363, BS7288 (RCD) | • | • | • | • | • | • |
| Dimensions (mm) | Height x Width x Depth | 130 x 195 x 80 | 130 x 195 x 80 | 130 x 195 x 80 | 130 x 195 x 80 | 130 x 195 x 80 | 335 x 220 x 107 |



| | | WPL01 | WPL02 | WPL03 | WPL04 |
|-----------------------|------------------------|--------------|--------------|--------------|--------------|
| Type | Single Gang | 2 Way | 2 Gang/2 Way | Bell | DP Switch |
| Operating Voltage | 230V AC | • | • | • | • |
| Switch Rating 230V AC | 10 A X | • | • | • | • |
| Operating Temperature | 0° to 40° C | • | • | • | • |
| Cable Capacity | 3 x 2.5mm ² | • | • | • | • |
| Conforms To BS | BS60669 | • | • | • | • |
| Dimensions (mm) | Height x Width x Depth | 92 x 92 x 64 | 92 x 92 x 64 | 92 x 92 x 64 | 92 x 92 x 64 |



Timeguard Limited
 Victory Park, 400 Edgware Road, London NW2 6ND Tel: 020 8452 1112 Fax: 020 8450 0635
 Email: csc@timeguard.com Website: www.timeguard.com