

# Electronic housing - OCS HP 121006 GY7035



1471775

<https://www.phoenixcontact.com/us/products/1471775>

Please be informed that the data shown in this PDF document is generated from our Online Catalog. Please find the complete data in the user documentation. Our General Terms of Use for Downloads are valid.

Outdoor housing, color: light gray, dimensions: 12" x 10" x 6", incl. corner inlays, cover plugs, screws, cover: light gray, plastic latch, material: PC UV-stabilized



## Your advantages

- Internationally certified housing system
- Special plastic ensures safe continuous operation
- Provides protection against the ingress of jet water
- Withstands even heavy mechanical strain

## Commercial Data

Item number	1471775
Packing unit	1 pc
Minimum order quantity	1 pc
Sales Key	A13
Product Key	ACFDBA
GTIN	4063151880521
Weight per Piece (excluding packing)	2.242 kg
Customs tariff number	85389099
Country of origin	EE

## Technical Data

### Notes

Assembly instruction:	Only use the screws provided to screw the components onto the corner inlays, the mounting pillars, and the housing.
Recommendation	To maintain the degree of protection, you must install suitable components with at least the same IP degree of protection in all openings.
Recommendation	Further information and detailed dimensions are available in the download area.
Order information:	Mounting feet, mounting plates, and the mount for mast mounting are available as accessories, but are not supplied as standard.

### Product properties

Product type	Complete housing
Type	Opaque complete housing including mounting material
Housing type	Outdoor housing
Ventilation openings present	no
Housing series	OCS
Battery compartment	no

### Dimensions

Width	308 mm
Height	326 mm
Depth	185 mm
Hole diameter	10 mm (Can be secured mechanically with the latch)

### Material specifications

Flammability rating according to UL 94	V2
Seal material	PUR
Insulating material	PC
Surface characteristics	untreated
Impact strength	IK10 (at -35°C ... +40°C)
Housing material	PC UV-stabilized

### Environmental and real-life conditions

#### Glow-wire test

Specification	IEC 60695-2-11:2014-02
Temperature	850 °C
Time of exposure	30 s

#### Degree of protection (IP code)

Specification	IEC 60529:2001-02
---------------	-------------------

#### Ambient conditions

Max. IP code to attain	IP69
------------------------	------

# Electronic housing - OCS HP 121006 GY7035



1471775

<https://www.phoenixcontact.com/us/products/1471775>

Max. NEMA code to attain	6P
Impact strength	IK10 (at -35°C ... +40°C)
Ambient temperature (operation)	-40 °C ... 80 °C

## Mounting

Mounting type	Mast mounting or wall mounting
Mounting position	any

## Packaging specifications

Type of packaging	Box packaging
-------------------	---------------

# Electronic housing - OCS HP 121006 GY7035



1471775

<https://www.phoenixcontact.com/us/products/1471775>

## Approvals



**cULus Listed**

Approval ID: E255026-20221017

# Electronic housing - OCS HP 121006 GY7035



1471775

<https://www.phoenixcontact.com/us/products/1471775>

## Classifications

### ECLASS

ECLASS-11.0	27182702
-------------	----------

# Electronic housing - OCS HP 121006 GY7035



1471775

<https://www.phoenixcontact.com/us/products/1471775>

## Accessories

### Wall bracket

Wall bracket - OCS FOOT SET - 1471777

<https://www.phoenixcontact.com/us/products/1471777>

Mounting foot, set of 4 pieces incl. screws for all housing sizes, material: polycarbonate, color: light gray



---

### Wall bracket

Wall bracket - OCS MOUNT 1210 SET - 1471782

<https://www.phoenixcontact.com/us/products/1471782>

Mounting plate, set of 2 pieces incl. screws for housing size of 12" x 10", material: polycarbonate, color: light gray



# Electronic housing - OCS HP 121006 GY7035



1471775

<https://www.phoenixcontact.com/us/products/1471775>

## Mounting plate

Mounting plate - OCS PANEL 1210 PC - 1471786

<https://www.phoenixcontact.com/us/products/1471786>

Mounting plate for housing size of 12" x 10", material: polycarbonate, color: white



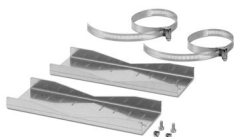
---

## Mounting material

Mounting material - OCS POLEFIX 1210 - 1476926

<https://www.phoenixcontact.com/us/products/1476926>

Mount for mast Ø of 60 mm ... 140 mm, complete set for a housing of 12" x 10",  
material: steel



1471775

<https://www.phoenixcontact.com/us/products/1471775>

## Pressure compensation element

Pressure compensation element - A-INB-M12-69KN-P-LG - 1415222

<https://www.phoenixcontact.com/us/products/1415222>



Pressure compensation element, material for screw connection: PA, connecting thread: M12 x 1.5, color: light grey, with O-ring

---

## Counter nut

Counter nut - A-INL-M12-P-LG - 1417659

<https://www.phoenixcontact.com/us/products/1417659>



Counter nut, for threads M12 x 1.5, color: light grey



1471775

<https://www.phoenixcontact.com/us/products/1471775>

## Cable tie

Cable tie - WT-STEEL SH 4,6X150 - 3240820

<https://www.phoenixcontact.com/us/products/3240820>



Cable binders, made from rust-free stainless steel (AISI 316), suitable for the harshest of ambient conditions (for example, salt water), with ball lock, for quick and secure bundling and fastening

---

## Cable gland

Cable gland - G-INS-M25-L68N-PNES-LG - 1424472

<https://www.phoenixcontact.com/us/products/1424472>



Cable gland, material for screw connection: PA, external cable diameter 13 mm .  
.. 18 mm, shielding: no, connecting thread: M25 x 1.5, color: lightgrey RAL 7035

# Electronic housing - OCS HP 121006 GY7035

1471775

<https://www.phoenixcontact.com/us/products/1471775>

## Cable gland

Cable gland - G-INS-M25-M68L-PEPDS-LG - 1424516

<https://www.phoenixcontact.com/us/products/1424516>



Cable gland, material for screw connection: PA, external cable diameter 9 mm ...  
17 mm, shielding: no, connecting thread: M25 x 1.5, color: lightgrey RAL 7035

---

## Counter nut

Counter nut - A-INL-M25-P-LG - 1417661

<https://www.phoenixcontact.com/us/products/1417661>



Counter nut, for threads M25 x 1.5, color: light grey

# Electronic housing - OCS HP 121006 GY7035

1471775

<https://www.phoenixcontact.com/us/products/1471775>

## Screw plug

Screw plug - A-INSP-M25-68N-P-LG - 1424520

<https://www.phoenixcontact.com/us/products/1424520>

Screw plug, material for screw connection: PA, connecting thread: M25 x 1.5, color: lightgrey RAL 7035, with O-ring



---

## Cable gland

Cable gland - G-INS-M40-M68N-PNES-LG - 1417656

<https://www.phoenixcontact.com/us/products/1417656>

Cable gland, material for screw connection: PA, external cable diameter 19 mm .. 28 mm, shielding: no, connecting thread: M40 x 1.5, color: lightgrey RAL 7035



# Electronic housing - OCS HP 121006 GY7035



1471775

<https://www.phoenixcontact.com/us/products/1471775>

## Cable gland

Cable gland - G-INB-M40-M68N-NEPDS-S - 1415185

<https://www.phoenixcontact.com/us/products/1415185>



Cable gland, material for screw connection: Nickel-plated brass, external cable diameter 16 mm ... 28 mm, shielding: no, connecting thread: M40 x 1.5, color: silver, with bend protection sleeve, with O-ring

---

## Counter nut

Counter nut - A-INL-M40-P-LG - 1417664

<https://www.phoenixcontact.com/us/products/1417664>



Counter nut, for threads M40 x 1.5, color: light grey

1471775

<https://www.phoenixcontact.com/us/products/1471775>

## Screw plug

Screw plug - A-INSP-M40-68N-P-LG - 1424522

<https://www.phoenixcontact.com/us/products/1424522>

Screw plug, material for screw connection: PA, connecting thread: M40 x 1.5, color: lightgrey RAL 7035



---

## Panel mounting frames

Panel mounting frames - VS-08-A-RJ45/LP-1-IP67 - 1689446

<https://www.phoenixcontact.com/us/products/1689446>

RJ45 panel mounting frame, IP67, for PCB connection, for square panel cutout, with grommet, without mounting screws, color: gray



# Electronic housing - OCS HP 121006 GY7035



1471775

<https://www.phoenixcontact.com/us/products/1471775>

## Protective cover

Protective cover - VS-08-SD-F-BK - 1658066

<https://www.phoenixcontact.com/us/products/1658066>

Protective cover, IP67, flat design, to cover the contact insert in the panel mounting frame, color: black



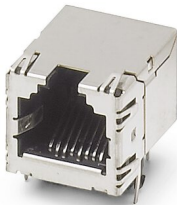
---

## RJ45 PCB connectors

RJ45 PCB connectors - VS-08-BU-RJ45-6/LH-1 - 1653087

<https://www.phoenixcontact.com/us/products/1653087>

RJ45 PCB connectors, design: RJ45, degree of protection: IP20, number of positions: 8, 1 Gbps, CAT5 (IEC 11801:2002), material: Metal, connection method: Wave soldering contacts



# Electronic housing - OCS HP 121006 GY7035

1471775

<https://www.phoenixcontact.com/us/products/1471775>

## RJ45 connector

RJ45 connector - CUC-V06-C1PGY-S/R4CE8:1 - 1414383

<https://www.phoenixcontact.com/us/products/1414383>



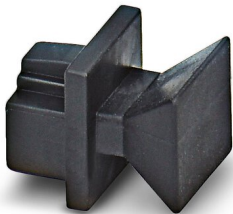
RJ45 connector, design: RJ45, degree of protection: IP67, number of positions: 8, 1 Gbps, CAT6, material: Plastic, connection method: Crimp connection, connection cross section: AWG 27- 24, cable outlet: straight, color: gray, Ethernet/PROFINET

---

## Dust protection

Dust protection - FL RJ45 PROTECT CAP - 2832991

<https://www.phoenixcontact.com/us/products/2832991>



Dust protection caps for RJ45 socket

# Electronic housing - OCS HP 121006 GY7035



1471775

<https://www.phoenixcontact.com/us/products/1471775>

## Device connector, rear mounting

Device connector, rear mounting - PRC 5-FT25-MC6-150 - 1409213

<https://www.phoenixcontact.com/us/products/1409213>



Panel feed-through, Range of articles: PRC 35, Device connector, rear mounting, housing material: PPE, color: black, number of positions: 5, max. conductor cross section: 6 mm<sup>2</sup>, rated voltage: 690 V AC, rated current: 35 A, Connection method: Crimp connection, Type of contact: Pin, cable length: 150. This item is also available with other cable lengths. For your specific requirements, please contact your local PHOENIX CONTACT subsidiary.

---

## Protective cap

Protective cap - PRC COVER M - 1409237

<https://www.phoenixcontact.com/us/products/1409237>



Installation connector, Range of articles: PRC 35, Protective cap, housing material: PPE, color: black, rated voltage: 1000. Suitable for connectors (MS)



# Electronic housing - OCS HP 121006 GY7035



1471775

<https://www.phoenixcontact.com/us/products/1471775>

## Coupler connector

Coupler connector - PRC 5-FC-FS6 8-21 HR - 1017632

<https://www.phoenixcontact.com/us/products/1017632>



Installation connector, Range of articles: PRC 35, Coupler connector, design: Release with tool or by hand (see accessories), housing material: PPE, color: black, number of positions: 5, min. conductor cross section: 1.5 mm<sup>2</sup>, max. conductor cross section: 6 mm<sup>2</sup>, rated voltage: 690 V AC, rated current: 35 A, Connection method: Screw connection, Type of contact: Socket, min. cable diameter: 8 mm, max. cable diameter: 21 mm. Variant for manual release

---

## Nut

Nut - FT NUT M25 GY - 1049832

<https://www.phoenixcontact.com/us/products/1049832>



Panel feed-through, Range of articles: PRC 35, Nut, color: gray

1471775

<https://www.phoenixcontact.com/us/products/1471775>

## Protective cap

Protective cap - PRC COVER F - 1409236

<https://www.phoenixcontact.com/us/products/1409236>



Installation connector, Range of articles: PRC 35, Protective cap, housing material: PPE, color: black, rated voltage: 1000. Suitable for couplings (FS)

---

## PCB terminal block

PCB terminal block - SPT 5/ 5-H-7,5-ZB - 1719228

<https://www.phoenixcontact.com/us/products/1719228>



PCB terminal block, nominal current: 41 A, rated voltage (III/2): 1000 V, nominal cross section: 6 mm<sup>2</sup>, number of potentials: 5, number of rows: 1, number of positions per row: 5, product range: SPT 5/..-H, pitch: 7.5 mm, connection method: Push-in spring connection, mounting: Wave soldering, conductor/PCB connection direction: 0 °, color: green, Pin layout: Zigzag pinning W, Solder pin [P]: 4.6 mm, number of solder pins per potential: 2, type of packaging: packed in cardboard

# Electronic housing - OCS HP 121006 GY7035

1471775

<https://www.phoenixcontact.com/us/products/1471775>

## Device connector front mounting

Device connector front mounting - PV-FT-C4M-C-6-130-RD-00 - 1158451

<https://www.phoenixcontact.com/us/products/1158451>



Panel feed-through, Range of articles: Sunclix, Device connector front mounting, housing material: PPE, color: black, number of positions: 1, rated voltage: 1500 V DC, Connection method: Crimp, Type of contact: Pin

---

## Device connector front mounting

Device connector front mounting - PV-FT-C4F-C-6-130-BU-00 - 1158448

<https://www.phoenixcontact.com/us/products/1158448>



Panel feed-through, Range of articles: Sunclix, Device connector front mounting, housing material: PPE, color: black, number of positions: 1, rated voltage: 1500 V DC, Connection method: Crimp, Type of contact: Socket

1471775

<https://www.phoenixcontact.com/us/products/1471775>

## PCB terminal block

PCB terminal block - SPT 5/ 1-H-7,5 - 1719189

<https://www.phoenixcontact.com/us/products/1719189>



PCB terminal block, nominal current: 41 A, rated voltage (III/2): 630 V, nominal cross section: 6 mm<sup>2</sup>, number of potentials: 1, number of rows: 1, number of positions per row: 1, product range: SPT 5/..-H, pitch: 7.5 mm, connection method: Push-in spring connection, mounting: Wave soldering, conductor/PCB connection direction: 0 °, color: green, Pin layout: Linear pinning, Solder pin [P]: 4.6 mm, number of solder pins per potential: 2, type of packaging: packed in cardboard

---

## Protective cap

Protective cap - PV-C PROTECTION CAP - 1785430

<https://www.phoenixcontact.com/us/products/1785430>



Photovoltaic connector, Range of articles: Sunclix, Protective cap, color: black. self-sealing, without interlock, set consisting of: 1 protective cap for connector side and 1 protective cap for coupling side

# Electronic housing - OCS HP 121006 GY7035



1471775

<https://www.phoenixcontact.com/us/products/1471775>

## Screw connection

Screw connection - PV-FT-C COLLAR NUT BK - 1083475

<https://www.phoenixcontact.com/us/products/1083475>

Panel feed-through, Range of articles: Sunclix, Screw connection



---

## Tool set

Tool set - TOOL-KIT SOLAR - 1212071

<https://www.phoenixcontact.com/us/products/1212071>



**Tool case**, equipped with: crimping pliers, pressing dies for MC3, MC4 and SOLARLOK connectors, stripping tool for commercially available solar cables, stripping tool for SUNCLIX, VDE cable cutter, VDE screwdriver: PH1, PH2, 0.6x3.5 and 0.8x4.0 slots.

---

Phoenix Contact 2023 © - all rights reserved  
<https://www.phoenixcontact.com>

Phoenix Contact USA  
586 Fulling Mill Road  
Middletown, PA 17057, United States  
(+717) 944-1300  
[info@phoenixcon.com](mailto:info@phoenixcon.com)