

Electronic housing - OCS HP 100806 GY7035



1471773

<https://www.phoenixcontact.com/us/products/1471773>

Please be informed that the data shown in this PDF document is generated from our Online Catalog. Please find the complete data in the user documentation. Our General Terms of Use for Downloads are valid.



Outdoor housing, color: light gray, dimensions: 10" x 8" x 6", incl. corner inlays, cover plugs, screws, cover: light gray, plastic latch, material: PC UV-stabilized

Your advantages

- Internationally certified housing system
- Special plastic ensures safe continuous operation
- Provides protection against the ingress of jet water
- Withstands even heavy mechanical strain

Commercial Data

Item number	1471773
Packing unit	1 pc
Minimum order quantity	1 pc
Sales Key	A13
Product Key	ACFDBA
GTIN	4063151881115
Weight per Piece (excluding packing)	1.762 kg
Customs tariff number	85389099
Country of origin	EE

Technical Data

Notes

Assembly instruction:	Only use the screws provided to screw the components onto the corner inlays, the mounting pillars, and the housing.
Recommendation	To maintain the degree of protection, you must install suitable components with at least the same IP degree of protection in all openings.
Recommendation	Further information and detailed dimensions are available in the download area.
Order information:	Mounting feet, mounting plates, and the mount for mast mounting are available as accessories, but are not supplied as standard.

Product properties

Product type	Complete housing
Type	Opaque complete housing including mounting material
Housing type	Outdoor housing
Ventilation openings present	no
Housing series	OCS
Battery compartment	no

Dimensions

Width	257 mm
Height	276 mm
Depth	185 mm
Hole diameter	10 mm (Can be secured mechanically with the latch)

Material specifications

Flammability rating according to UL 94	V2
Seal material	PUR
Insulating material	PC
Surface characteristics	untreated
Impact strength	IK10 (at -35°C ... +40°C)
Housing material	PC UV-stabilized

Environmental and real-life conditions

Glow-wire test

Specification	IEC 60695-2-11:2014-02
Temperature	850 °C
Time of exposure	30 s

Degree of protection (IP code)

Specification	IEC 60529:2001-02
---------------	-------------------

Ambient conditions

Max. IP code to attain	IP69
------------------------	------

Electronic housing - OCS HP 100806 GY7035



1471773

<https://www.phoenixcontact.com/us/products/1471773>

Max. NEMA code to attain	6P
Impact strength	IK10 (at -35°C ... +40°C)
Ambient temperature (operation)	-40 °C ... 80 °C

Mounting

Mounting type	Mast mounting or wall mounting
Mounting position	any

Packaging specifications

Type of packaging	Box packaging
-------------------	---------------

Electronic housing - OCS HP 100806 GY7035



1471773

<https://www.phoenixcontact.com/us/products/1471773>

Approvals



cULus Listed

Approval ID: E255026-20221017

Electronic housing - OCS HP 100806 GY7035



1471773

<https://www.phoenixcontact.com/us/products/1471773>

Classifications

ECLASS

ECLASS-11.0	27182702
-------------	----------

1471773

<https://www.phoenixcontact.com/us/products/1471773>

Accessories

Wall bracket

Wall bracket - OCS FOOT SET - 1471777

<https://www.phoenixcontact.com/us/products/1471777>

Mounting foot, set of 4 pieces incl. screws for all housing sizes, material: polycarbonate, color: light gray



Wall bracket

Wall bracket - OCS MOUNT 1008 SET - 1471781

<https://www.phoenixcontact.com/us/products/1471781>

Mounting plate, set of 2 pieces incl. screws for housing size of 10" x 8", material: polycarbonate, color: light gray



Electronic housing - OCS HP 100806 GY7035



1471773

<https://www.phoenixcontact.com/us/products/1471773>

Mounting plate

Mounting plate - OCS PANEL 1008 PC - 1471785

<https://www.phoenixcontact.com/us/products/1471785>

Mounting plate for housing size of 10" x 8", material: polycarbonate, color: white

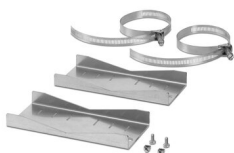


Mounting material

Mounting material - OCS POLEFIX 1008 - 1476924

<https://www.phoenixcontact.com/us/products/1476924>

Mount for mast \varnothing of 60 mm ... 140 mm, complete set for a housing of 10" x 8",
material: steel



1471773

<https://www.phoenixcontact.com/us/products/1471773>

Pressure compensation element

Pressure compensation element - A-INB-M12-69KN-P-LG - 1415222

<https://www.phoenixcontact.com/us/products/1415222>



Pressure compensation element, material for screw connection: PA, connecting thread: M12 x 1.5, color: light grey, with O-ring

Counter nut

Counter nut - A-INL-M12-P-LG - 1417659

<https://www.phoenixcontact.com/us/products/1417659>



Counter nut, for threads M12 x 1.5, color: light grey

1471773

<https://www.phoenixcontact.com/us/products/1471773>

Cable tie

Cable tie - WT-STEEL SH 4,6X150 - 3240820

<https://www.phoenixcontact.com/us/products/3240820>



Cable binders, made from rust-free stainless steel (AISI 316), suitable for the harshest of ambient conditions (for example, salt water), with ball lock, for quick and secure bundling and fastening

Cable gland

Cable gland - G-INS-M25-L68N-PNES-LG - 1424472

<https://www.phoenixcontact.com/us/products/1424472>



Cable gland, material for screw connection: PA, external cable diameter 13 mm .
.. 18 mm, shielding: no, connecting thread: M25 x 1.5, color: lightgrey RAL 7035

1471773

<https://www.phoenixcontact.com/us/products/1471773>

Cable gland

Cable gland - G-INS-M25-M68L-PEPDS-LG - 1424516

<https://www.phoenixcontact.com/us/products/1424516>



Cable gland, material for screw connection: PA, external cable diameter 9 mm ...
17 mm, shielding: no, connecting thread: M25 x 1.5, color: lightgrey RAL 7035

Counter nut

Counter nut - A-INL-M25-P-LG - 1417661

<https://www.phoenixcontact.com/us/products/1417661>



Counter nut, for threads M25 x 1.5, color: light grey

Electronic housing - OCS HP 100806 GY7035



1471773

<https://www.phoenixcontact.com/us/products/1471773>

Screw plug

Screw plug - A-INSP-M25-68N-P-LG - 1424520

<https://www.phoenixcontact.com/us/products/1424520>

Screw plug, material for screw connection: PA, connecting thread: M25 x 1.5, color: lightgrey RAL 7035, with O-ring



Cable gland

Cable gland - G-INS-M40-M68N-PNES-LG - 1417656

<https://www.phoenixcontact.com/us/products/1417656>

Cable gland, material for screw connection: PA, external cable diameter 19 mm .. 28 mm, shielding: no, connecting thread: M40 x 1.5, color: lightgrey RAL 7035



Electronic housing - OCS HP 100806 GY7035



1471773

<https://www.phoenixcontact.com/us/products/1471773>

Cable gland

Cable gland - G-INB-M40-M68N-NEPDS-S - 1415185

<https://www.phoenixcontact.com/us/products/1415185>



Cable gland, material for screw connection: Nickel-plated brass, external cable diameter 16 mm ... 28 mm, shielding: no, connecting thread: M40 x 1.5, color: silver, with bend protection sleeve, with O-ring

Counter nut

Counter nut - A-INL-M40-P-LG - 1417664

<https://www.phoenixcontact.com/us/products/1417664>

Counter nut, for threads M40 x 1.5, color: light grey



Electronic housing - OCS HP 100806 GY7035

1471773

<https://www.phoenixcontact.com/us/products/1471773>

Screw plug

Screw plug - A-INSP-M40-68N-P-LG - 1424522

<https://www.phoenixcontact.com/us/products/1424522>

Screw plug, material for screw connection: PA, connecting thread: M40 x 1.5, color: lightgrey RAL 7035



Panel mounting frames

Panel mounting frames - VS-08-A-RJ45/LP-1-IP67 - 1689446

<https://www.phoenixcontact.com/us/products/1689446>

RJ45 panel mounting frame, IP67, for PCB connection, for square panel cutout, with grommet, without mounting screws, color: gray



Electronic housing - OCS HP 100806 GY7035



1471773

<https://www.phoenixcontact.com/us/products/1471773>

Protective cover

Protective cover - VS-08-SD-F-BK - 1658066

<https://www.phoenixcontact.com/us/products/1658066>

Protective cover, IP67, flat design, to cover the contact insert in the panel mounting frame, color: black

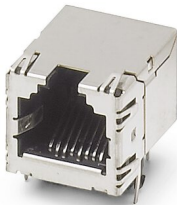


RJ45 PCB connectors

RJ45 PCB connectors - VS-08-BU-RJ45-6/LH-1 - 1653087

<https://www.phoenixcontact.com/us/products/1653087>

RJ45 PCB connectors, design: RJ45, degree of protection: IP20, number of positions: 8, 1 Gbps, CAT5 (IEC 11801:2002), material: Metal, connection method: Wave soldering contacts



Electronic housing - OCS HP 100806 GY7035

1471773

<https://www.phoenixcontact.com/us/products/1471773>

RJ45 connector

RJ45 connector - CUC-V06-C1PGY-S/R4CE8:1 - 1414383

<https://www.phoenixcontact.com/us/products/1414383>

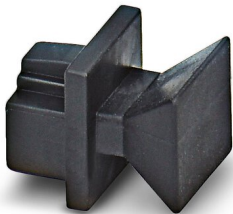


RJ45 connector, design: RJ45, degree of protection: IP67, number of positions: 8, 1 Gbps, CAT6, material: Plastic, connection method: Crimp connection, connection cross section: AWG 27- 24, cable outlet: straight, color: gray, Ethernet/PROFINET

Dust protection

Dust protection - FL RJ45 PROTECT CAP - 2832991

<https://www.phoenixcontact.com/us/products/2832991>



Dust protection caps for RJ45 socket

Electronic housing - OCS HP 100806 GY7035



1471773

<https://www.phoenixcontact.com/us/products/1471773>

Device connector, rear mounting

Device connector, rear mounting - PRC 5-FT25-MC6-150 - 1409213

<https://www.phoenixcontact.com/us/products/1409213>



Panel feed-through, Range of articles: PRC 35, Device connector, rear mounting, housing material: PPE, color: black, number of positions: 5, max. conductor cross section: 6 mm², rated voltage: 690 V AC, rated current: 35 A, Connection method: Crimp connection, Type of contact: Pin, cable length: 150. This item is also available with other cable lengths. For your specific requirements, please contact your local PHOENIX CONTACT subsidiary.

Protective cap

Protective cap - PRC COVER M - 1409237

<https://www.phoenixcontact.com/us/products/1409237>



Installation connector, Range of articles: PRC 35, Protective cap, housing material: PPE, color: black, rated voltage: 1000. Suitable for connectors (MS)

Electronic housing - OCS HP 100806 GY7035



1471773

<https://www.phoenixcontact.com/us/products/1471773>

Coupler connector

Coupler connector - PRC 5-FC-FS6 8-21 HR - 1017632

<https://www.phoenixcontact.com/us/products/1017632>



Installation connector, Range of articles: PRC 35, Coupler connector, design: Release with tool or by hand (see accessories), housing material: PPE, color: black, number of positions: 5, min. conductor cross section: 1.5 mm², max. conductor cross section: 6 mm², rated voltage: 690 V AC, rated current: 35 A, Connection method: Screw connection, Type of contact: Socket, min. cable diameter: 8 mm, max. cable diameter: 21 mm. Variant for manual release

Nut

Nut - FT NUT M25 GY - 1049832

<https://www.phoenixcontact.com/us/products/1049832>



Panel feed-through, Range of articles: PRC 35, Nut, color: gray

1471773

<https://www.phoenixcontact.com/us/products/1471773>

Protective cap

Protective cap - PRC COVER F - 1409236

<https://www.phoenixcontact.com/us/products/1409236>



Installation connector, Range of articles: PRC 35, Protective cap, housing material: PPE, color: black, rated voltage: 1000. Suitable for couplings (FS)

PCB terminal block

PCB terminal block - SPT 5/ 5-H-7,5-ZB - 1719228

<https://www.phoenixcontact.com/us/products/1719228>



PCB terminal block, nominal current: 41 A, rated voltage (III/2): 1000 V, nominal cross section: 6 mm², number of potentials: 5, number of rows: 1, number of positions per row: 5, product range: SPT 5/..-H, pitch: 7.5 mm, connection method: Push-in spring connection, mounting: Wave soldering, conductor/PCB connection direction: 0 °, color: green, Pin layout: Zigzag pinning W, Solder pin [P]: 4.6 mm, number of solder pins per potential: 2, type of packaging: packed in cardboard

Electronic housing - OCS HP 100806 GY7035



1471773

<https://www.phoenixcontact.com/us/products/1471773>

Device connector front mounting

Device connector front mounting - PV-FT-C4M-C-6-130-RD-00 - 1158451

<https://www.phoenixcontact.com/us/products/1158451>



Panel feed-through, Range of articles: Sunclix, Device connector front mounting, housing material: PPE, color: black, number of positions: 1, rated voltage: 1500 V DC, Connection method: Crimp, Type of contact: Pin

Device connector front mounting

Device connector front mounting - PV-FT-C4F-C-6-130-BU-00 - 1158448

<https://www.phoenixcontact.com/us/products/1158448>



Panel feed-through, Range of articles: Sunclix, Device connector front mounting, housing material: PPE, color: black, number of positions: 1, rated voltage: 1500 V DC, Connection method: Crimp, Type of contact: Socket

1471773

<https://www.phoenixcontact.com/us/products/1471773>

PCB terminal block

PCB terminal block - SPT 5/ 1-H-7,5 - 1719189

<https://www.phoenixcontact.com/us/products/1719189>



PCB terminal block, nominal current: 41 A, rated voltage (III/2): 630 V, nominal cross section: 6 mm², number of potentials: 1, number of rows: 1, number of positions per row: 1, product range: SPT 5/..-H, pitch: 7.5 mm, connection method: Push-in spring connection, mounting: Wave soldering, conductor/PCB connection direction: 0 °, color: green, Pin layout: Linear pinning, Solder pin [P]: 4.6 mm, number of solder pins per potential: 2, type of packaging: packed in cardboard

Protective cap

Protective cap - PV-C PROTECTION CAP - 1785430

<https://www.phoenixcontact.com/us/products/1785430>



Photovoltaic connector, Range of articles: Sunclix, Protective cap, color: black, self-sealing, without interlock, set consisting of: 1 protective cap for connector side and 1 protective cap for coupling side

Electronic housing - OCS HP 100806 GY7035



1471773

<https://www.phoenixcontact.com/us/products/1471773>

Screw connection

Screw connection - PV-FT-C COLLAR NUT BK - 1083475

<https://www.phoenixcontact.com/us/products/1083475>

Panel feed-through, Range of articles: Sunclix, Screw connection



Tool set

Tool set - TOOL-KIT SOLAR - 1212071

<https://www.phoenixcontact.com/us/products/1212071>



Tool case, equipped with: crimping pliers, pressing dies for MC3, MC4 and SOLARLOK connectors, stripping tool for commercially available solar cables, stripping tool for SUNCLIX, VDE cable cutter, VDE screwdriver: PH1, PH2, 0.6x3.5 and 0.8x4.0 slots.

Phoenix Contact 2023 © - all rights reserved
<https://www.phoenixcontact.com>

Phoenix Contact USA
586 Fulling Mill Road
Middletown, PA 17057, United States
(+717) 944-1300
info@phoenixcon.com