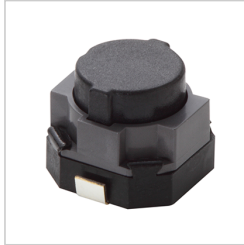




EVPAS5D1A | 6mm Square Long Travel 2 terminals SMD



※Photo may vary from actual product.

Product Number	EVPAS5D1A
Part Number	EVPAS5D1A
Product name	6mm Square Long Travel 2 terminals SMD
Features	Long travel type with two terminal structure.

Spec Detail

As of February 18, 2023

Specifications and design of the products are subject to change without notice for the product improvement.

Item	Specifications
Product Number	EVPAS5D1A
Part Number	EVPAS5D1A
Type:	EVPAS
Vehicle compatible	Available
External dimensions (LxW) (mm)	6.0 x 6.1
External dimensions (H) (mm)	5.0
Mounting Height (mm)	5.0
Dimensions excluding push plate (mm)	3.50
Operating direction	Top push
Applicable soldering	Reflow
Mounting type	SMD
Type	Snap action / Push-on type SPST
Rating	10μA 2V DC to 50mA 12V DC (Resistive load)
Contact Resistance (mΩ max.)	100
Insulation Resistance (MΩ min. at 100V DC)	100
Dielectric Withstanding Voltage	250 V AC (for 1minute)
Bouncing	10ms max. (ON, OFF)
Narrow tolerance operating force	Narrow tolerance operating force type
Operating Force (N)	4.0
Travel Type	Long travel

Travel (mm)	1.0
Operating Life	200,000 cycles
Operating Temperature	-40°C to +90°C
Storage Temperature	-40°C to +90°C (Bulk) -20°C to +60°C (Taping)
Terminal type	J-bent
Push Plate (Actuator)	With
Push Plate Color	Black
Ground Terminal	Without
Boss	Without
Packaging	Embossed Taping (Reel Pack)
Minimum Quantity/Packing Unit	2,000 pcs.
Quantity/Carton	10,000 pcs.