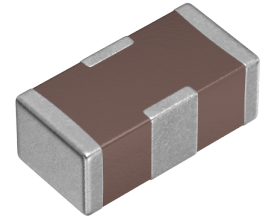


Applications	Automotive Grade
Feature	AEC-Q200 For Power Line
Series	YFF
Status	Production
Brand	TDK



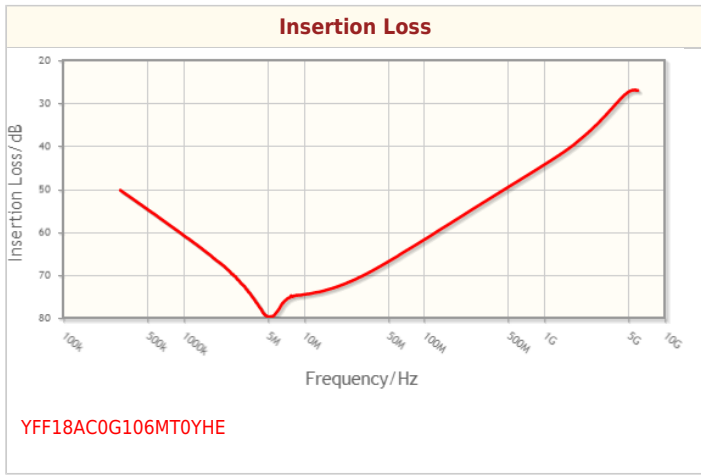
Size	
Length(L)	1.60mm +0.30,-0.10mm
Width(W)	0.80mm +0.30,-0.10mm
Thickness(T)	0.80mm +0.30,-0.10mm

Electrical Characteristics	
Insertion Loss [Typ.]	40dB (0.09MHz to 1.8GHz)
Cut-Off Frequency [Typ.]	
Rated Voltage [Max.]	4V
Rated Current [Max.]	4A
Rated Current Derating	
DC Resistance (Max.)	10mΩ
Rated Capacitance [Typ.]	10μF

Other	
Circuit Type	Feed Through Type
Transmission Line	Single-ended
Operating Temp. Range	-55 to 125°C
Soldering Method	Reflow
AEC-Q200	YES
Packing	Embossed (Plastic)Taping [180mm Reel]
Package Quantity	3000pcs
Weight	

! Images are for reference only and show exemplary products.
! This PDF document was created based on the data listed on the TDK Corporation website.
! All specifications are subject to change without notice.

Characteristic Graphs(This is reference data, and does not guarantee the products characteristics.)



! Images are for reference only and show exemplary products.
! This PDF document was created based on the data listed on the TDK Corporation website.
! All specifications are subject to change without notice.

Associated Images

