

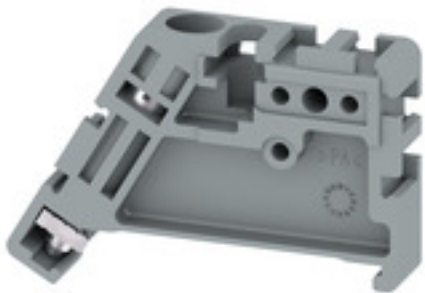
EW 35 GR 7042**Weidmüller Interface GmbH & Co. KG**

Klingenbergstraße 26

D-32758 Detmold

Germany

www.weidmueller.com

Product image

Weidmüller's range of products includes end brackets that guarantee a permanent, reliable mounting on the terminal rail and prevent sliding. Versions with and without screws are available. The end brackets include marking options, also for group markers, and also a test plug holder.

General ordering data

Version	Accessories, End bracket
Order No.	1854410000
Type	EW 35 GR 7042
GTIN (EAN)	4032248392155
Qty.	50 pc(s).

EW 35 GR 7042

Weidmüller Interface GmbH & Co. KG

Klingenbergstraße 26

D-32758 Detmold

Germany

www.weidmueller.com

Technical data

Dimensions and weights

Depth	27 mm	Depth (inches)	1.063 inch
Height	46 mm	Height (inches)	1.811 inch
Width	9 mm	Width (inches)	0.354 inch
Net weight	5.44 g		

Temperatures

Continuous operating temp., min.	-50 °C	Continuous operating temp., max.	120 °C
----------------------------------	--------	----------------------------------	--------

Material data

Material	Wemid	Colour	grey
UL 94 flammability rating	V-2		

System specifications

Version	For the terminals	Rail	TS 35
---------	-------------------	------	-------

Additional technical data

Installation advice	Direct mounting	Interlock	for screw fixing
Type of mounting	when screwed in		

General

Installation advice	Direct mounting	Rail	TS 35
---------------------	-----------------	------	-------

Classifications

ETIM 6.0	EC001041	ETIM 7.0	EC001041
ETIM 8.0	EC001041	ECLASS 9.0	27-14-11-35
ECLASS 9.1	27-14-11-35	ECLASS 10.0	27-14-11-35
ECLASS 11.0	27-14-11-35	ECLASS 12.0	27-14-11-35

Approvals

ROHS	Conform
------	---------

Downloads

Engineering Data	CAD data – STEP
Engineering Data	WSCAD
User Documentation	StorageConditionsTerminalBlocks
Catalogues	Catalogues in PDF-format