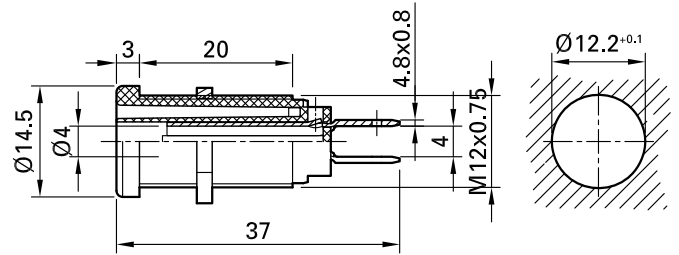


# XEB-1R



Item number 66.9131-\*

Insulated, rigid, Ø 4 mm, accepting spring-loaded Ø 4 mm plugs with rigid insulating sleeve. Brass sheet. The socket consists of two insulated, semi-circular contacts, which are connected to each other when a plug is inserted (switch function). The socket is screwed into pre-drilled panels

of plastic, metal, etc. 2 x Flat connecting tab 4.8 mm x 0.8 mm.

Technical data	
Diameter of plug system	4 mm
Rated Values	1000 V, CAT IV, 20 A
Surface treatment electrical contact	Ni
Base material electrical contact	CuZn
Standard color(s) *	<span style="background-color: #ffff00; border: 1px solid black; padding: 2px;">20</span> <span style="background-color: #000000; color: white; border: 1px solid black; padding: 2px;">21</span> <span style="background-color: #ff0000; color: white; border: 1px solid black; padding: 2px;">22</span> <span style="background-color: #0000ff; color: white; border: 1px solid black; padding: 2px;">23</span> <span style="background-color: #ffff00; border: 1px solid black; padding: 2px;">24</span> <span style="background-color: #008000; color: white; border: 1px solid black; padding: 2px;">25</span> <span style="background-color: #800080; color: white; border: 1px solid black; padding: 2px;">26</span> <span style="border: 1px solid black; padding: 2px;">29</span>
Thread	M12x0,75
Test accessory acc. to	IEC EN 61010-2-030
Supplied assembly material	GEW.12-MUTTER
Remarks	Accessories: Flat connecting receptacle FSH4,8x0,8; Tube spanner SS2; Tube spanner SS425
Approvals	UR