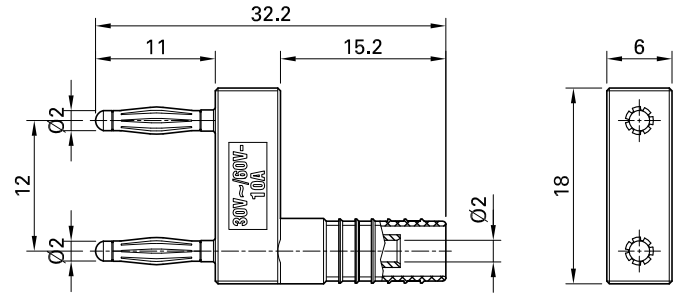
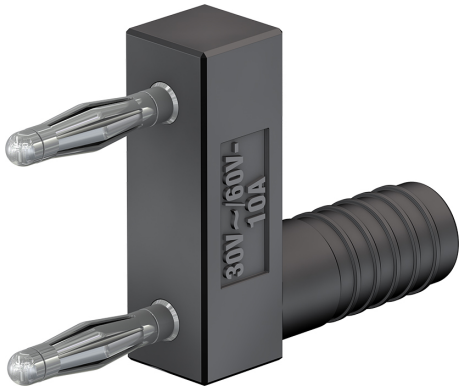


# KS2-12L/1SA/N



Item number 63.9845-\*

Insulated, Ø 2 mm, made of brass. Equipped with spring-loaded MULTILAM to ensure vibration-proof contacts – ideal use is in the automotive field for test drives and servicing. Ø 2 mm rigid socket in insulator accepting spring-loaded Ø 2 mm plugs with rigid insulating sleeve.

Technical data	
Diameter of plug system	2 mm
Rated Values	30 V, 10 A / 60 V, 10 A
Surface treatment electrical contact	Ni
Base material electrical contact	CuZn
Standard color(s) *	<b>21</b>
Plug spacing	12 mm
Test accessory acc. to	IEC EN 61010-031