

Wall Mounted Rack



This 19" Wall Rack concept provides maximum benefit from the time it is purchased to final installation and throughout it's application.

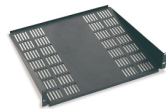


The WITrack range is a new integral solution for networking, telecommunications and electronic equipment wall installations. Designed in accordance with IEC standards 60 297-2; DIN 41494 parts 1-7; ANSI/EIA-310-D; and UNE 20 539-2

- One-Man installation, fast tool-free assembly, accessibility and maintenance
- Aluminium external structure
- 4/8 injection moulded ABS corner pieces
- Safety glass front door with swivel hinge system
- Full accessible from all sides, access secured using a single front key
- Top/Bottom cable entries designed to take up to 100 cables
- 1-Section with fast fixing rear panel
- 2-section with additional rear section
- Recommended load: 40kg (1 section); 20kg in central body (2 section)
- Finished in grey graphite epoxy paint

Description	Useable Depth	Order Code	Price Each		
			1+	5+	10+
6U 1-Section	500	??-????	££.££	£££.££	£££.££
9U 1-Section	500	??-????	£££.££	£££.££	£££.££
12U 1-Section	500	??-????	£££.££	£££.££	£££.££
15U 1-Section	500	??-????	£££.££	£££.££	£££.££
6U 2-Section	500+40	??-????	£££.££	£££.££	£££.££
9U 2-Section	500+40	??-????	£££.££	£££.££	£££.££
12U 2-Section	500+40	??-????	£££.££	£££.££	£££.££
15U 2-Section	500+40	??-????	£££.££	£££.££	£££.££

Cantilever Shelf



- Available in 180mm, 280mm, 350mm and 400mm, all with 2U front height
- Ventilation Slots
- Manufactured from 1.5mm thick steel, finished in grey graphite epoxy paint.
- Maximum static load of 20kg

Description	Order Code	Price Each		
		1+	5+	10+
180mm Cantilever Tray	??-????	££.££	££.££	££.££
280mm Cantilever Tray	??-????	££.££	££.££	££.££
350mm Cantilever Tray	??-????	££.££	££.££	££.££
400mm Cantilever Tray	??-????	££.££	££.££	££.££

Cantilever Telescopic Shelf



- Ideal for keyboard applications
- Ventilations slots, 2U front height
- RAL 9004 polyamide handle
- Manufactured from 1.5mm thick steel and finished in grey graphite epoxy paint
- Maximum static load 10kg

Description	Order Code	Price Each		
		1+	5+	10+
Cantilever Telescopic Tray	??-????	££.££	££.££	££.££

Ventilation Kit



Design to mount to the side/top, taking up no height for space for mounting

- Tool-free fixation of fan unit
- Supplied ready to plug into IEC 320 socket (cable not included)
- Manufactured from 1mm thick steel, finished in grey graphite epoxy paint

Description	Order Code	Price Each		
		1+	5+	10+
Ventilation Kit	??-????	££.££	££.££	££.££

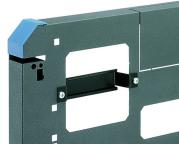
19" Profiles



- Additional profiles, for attaching trays or other accessories requiring 4-anchor-points
- Manufactured from 1.5mm thick steel and finished in grey graphite epoxy paint

Description	Order Code	Price Each		
		1+	5+	10+
6U 19" Profiles	??-????	££.££	££.££	££.££
9U 19" Profiles	??-????	££.££	££.££	££.££
12U 19" Profiles	??-????	££.££	££.££	££.££
15U 19" Profiles	??-????	££.££	££.££	££.££

Built-In Din Rail

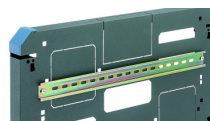


DIN rail to anchor magneto-thermal switches components to the second section of the rack

- Designed in accordance to DIN 50022 and IEC 60 715
- Manufactured from 1.5mm thick steel, finished in black zinc coating

Description	Order Code	Price Each		
		1+	5+	10+
Built-in Din rail	??-????	££.££	££.££	££.££

19" Din Rail

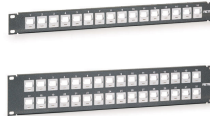


19" rail for anchoring components with standard Din fixation

- Designed in accordance to DIN 50022 and IEC 60 715
- Manufactured from 1.5mm thick steel, finished in yellow zinc coating

Description	Order Code	Price Each		
		1+	5+	10+
19" Din Rail	??-????	££.££	££.££	££.££

Patch-Panel



Designed for attaching RJ45 jacks

- Bracket enables compatibility with keystone and Avaya assembly types
- Manufactured from 1.5mm thick steel, finished in grey graphite epoxy paint
- Includes PA jack frames self-extinguishing according to UL-94 V0

Description	Order Code	Price Each		
		1+	5+	10+
1U 16-connection Patch Panel	??-????	££.££	££.££	££.££
2U 32-connection Patch Panel	??-????	££.££	££.££	££.££

19" Clamp Panels



19" Panel for guiding and distributing wires

Manufactured from 1.5mm thick steel, finished in black epoxy paint

Description	Order Code	Price Each		
		1+	5+	10+
1U Clamp Panel	??-????	££.££	££.££	££.££
2U Clamp Panel	??-????	££.££	££.££	££.££

19" Attachment Set



Used for attachment of components to rack

Nickel-plated M6 x 15mm locking nut with slotted head, PA washer, zinc-coated M6 caged nut with corresponding stainless-steel cage (set of 20)

Description	Order Code	Price Each		
		1+	5+	10+
19" Attachment Set (20)	??-????	££.££	££.££	££.££

10

Enclosures, Boxes & Equipment Racking