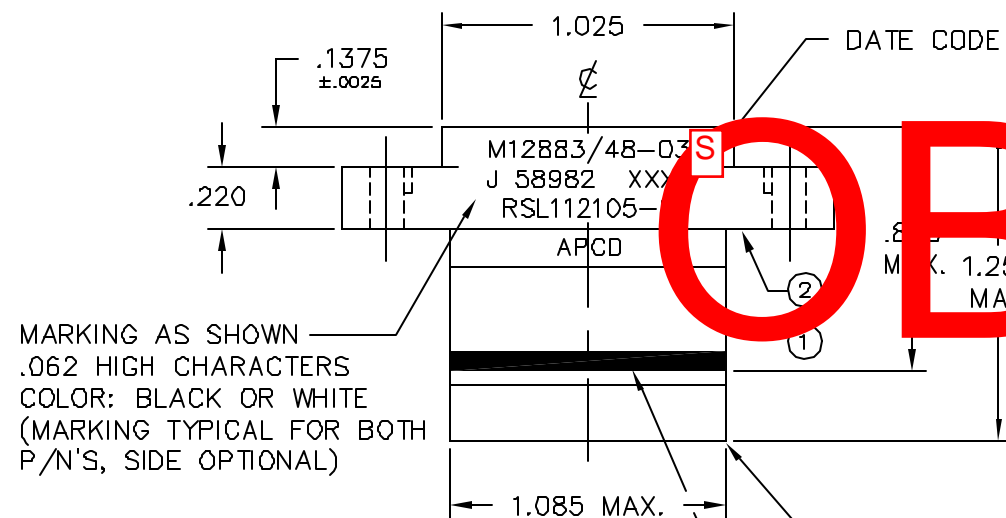
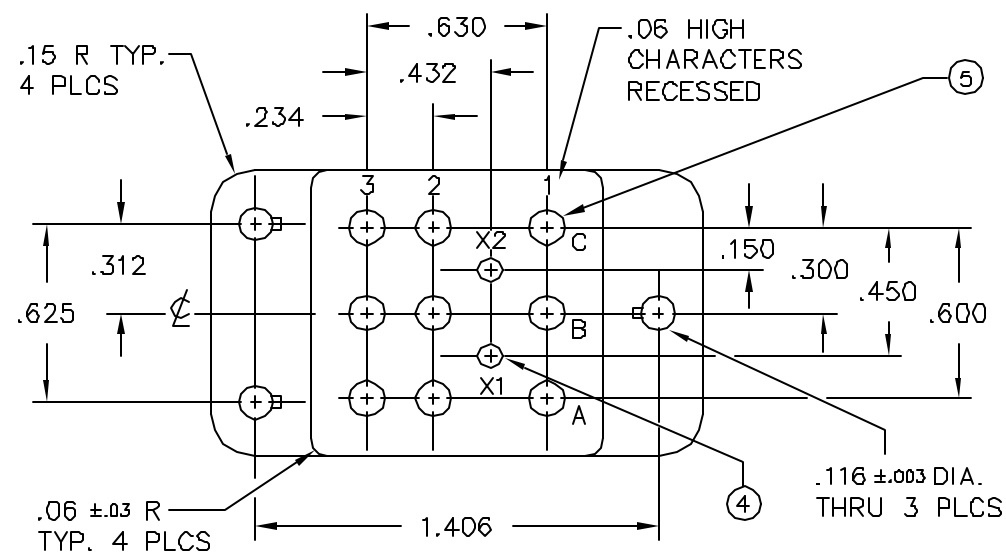
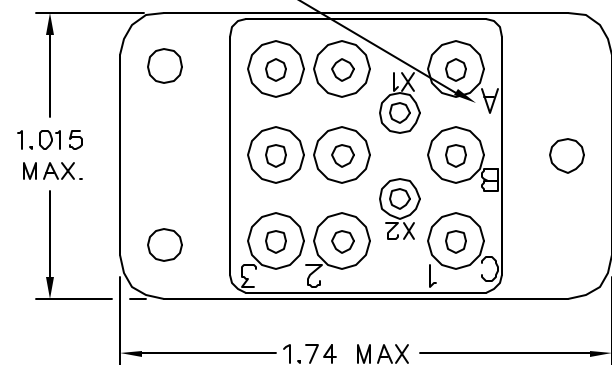


REV	ECN	DESCRIPTION	APP'D
-	5565	RELEASE	



MARKING AS SHOWN  
 .062 HIGH CHARACTERS  
 COLOR: BLACK OR WHITE  
 (MARKING TYPICAL FOR BOTH  
 P/N'S, SIDE OPTIONAL)

WHITE MARKING  
 AW-2158  
 BLUE STRIPE MARKING  
 2 OPPOSITE SIDES - .07 WIDE



NOTES:

1. MATERIALS:

- A. CONTACTS WITH PLATING, COLOR: BLUE-GREEN.
  - B. WIRE SEALING GROMMET-SILICONE PER ZZ-R-765, COLOR: RED.
  - C. MOUNTING HARDWARE- STAINLESS STEEL
  - D. SOCKET CONTACTS PER ALLOY, GOLD PLATED PER MIL-G-45204, TYPE II, GRADE C, CLASS 1.
2. MOUNTING HARDWARE SUPPLIED IN SEPARATE BAG WITHIN UNIT PACKAGE.
3. SOCKET CONTACTS SUPPLIED IN RIGID CONTAINER WITHIN UNIT PACKAGE IN QUANTITY PER TABLE.

OBSOLETE

PART NO.	SOCKET CONTACTS SUPPLIED	MARKING
RSL112104-S	NONE	RSL112105-S
RSL112105-S	(9) SZ. 12/12, PCD P/N CNS511800 (2) SZ. 16/16, PCD P/N CNS511600	

ITEM	PART NO.	DESCRIPTION	QTY
1	220032400	TOP HSG, 9/12 2/16, 3 KEY	1
2	220019000	BOTTOM HSG, 9/12 2/16, RLY SKT	1
3	270003201	GROMMET, 9/12 2/16, COLOR RED	1
4	310000201	RETAINER CLIP, SZ 16, S.S.	2
5	310000701	RETAINER CLIP, SZ 12, S.S.	9

DIMENSIONS ANSI Y14.5M UNITS: INCHES ACAD FILE	TOLERANCES .XX ±.01 .XXX ±.005 ANGLES ±2°	PROJECTION 	<h2>Amphenol Pcd</h2> ENGR R. SWAINE 12/17/04 CHKD APPD	TITLE RELAY SOCKET (9) SZ 12/12, (2) SZ 16/16 REF. M12883/48-03
ORIGINAL NOT FOR CUSTOMER DISTRIBUTION		THIS DOCUMENT CONTAINS PROPRIETARY INFORMATION WHICH IS THE CONFIDENTIAL PROPERTY OF AMPHENOL PCD INC. PEABODY, MA		SIZE B
				DWG NO. <h1>RSL112104-S</h1>
				REV -
				CODE: 58982    SCALE: 1.5X    SHEET 1 OF 1

RSL112104-S

RSL112104-S