

nominal voltage: 8,4V
max. charge voltage: 10,5V

conditions
 at standard charge (0,1C / 20°C)

capacity
 nominal : 200mAh
 >165mAh
 typical: 205mAh

discharge at 0,2C
 discharge at 1,0C
 discharge at 0,2C
 7,0V end discharge voltage
 ambient temperature 20°C

max. discharge current: 400mA
 ambient temperature 20....50°C

charge
 standard charge: charge current 20mA charge time 16hrs
 rapid charge: charge current 60mA charge time 5hrs for empty battery

recommended charge termination control parameter: -dV: 15....35mV

trickle charge current: 6....10mA (recommended)

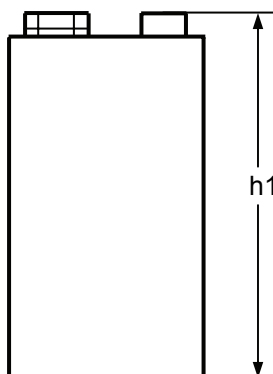
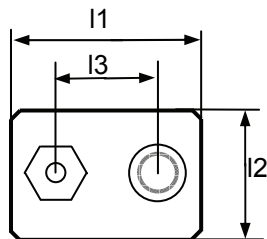
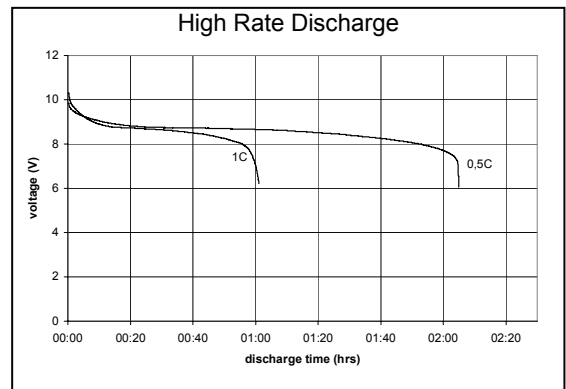
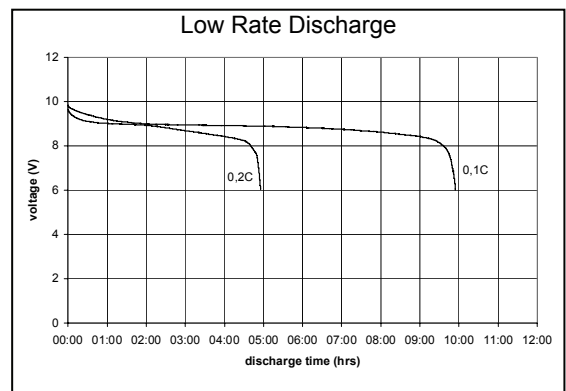
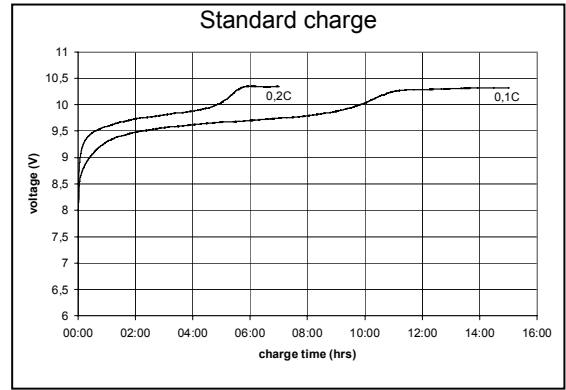
continuous overcharge: max. 10mA (less than 1 year)
 no conspicuous deformation, no leakage

internal resistance: <0,63Ohms
 at 1000Hz, battery fully charged

life expectancy: >500 cycles IEC standard


ambient temperature range: 0....45°C
 10....40°C
 -20....65°C
 -20....55°C
 -20....45°C
 -20....35°C

standard charge
 rapid charge
 discharge
 storage less than 1 month
 storage less than 6 months
 storage less than 2 years



mechanical specifications

cell dimensions (with sleeve)
 length l1: 26,3 – 0,5mm
 length l2: 16,5 +/- 1,0mm
 length l3: 12,7+/-0,25mm
 height h1: 48,5 – 1,0mm
 weight: approx. 43g

	specifications for model/type:	9V – NiMH 200mAh
	Ansmann drawing number / part number:	5030081
	drawn by / date:	Gramlich / 14.10.2003