

Features

- Universal input 100-240VAC
- Interchangeable Power Supply
- Approved to UKCA, CE, cULus, TUV, FCC, (C-Tick), RoHS, REACH
- EN/IEC/ES 60601-1 Safety Approved
- Meets Efficiency Level VI
- EMC Class B Certified
- Single Output 12-48V DC
- OVP, OCP, OTP & Short Circuit



Ideal Power's 15DYS851-xxxxyyG-K 50W AC/DC External Adapter Interchangeable Power Supply (PSU) Series are certified to UKCA, CE, cULus, TUV, FCC, (C-Tick), RoHS, REACH & EN 60601-1/IEC 60601-1/ES 60601-1 Standards and comply with (EU) 2019/1782, Level VI Efficiency Regulations. These are primarily used in Medical, ITE, Audio & Video Industries and customised solutions are available upon request.

Models

| Model Number | Output Voltage V DC | Output Current A | Output Power W |
|--------------------|------------------------|---------------------|-------------------|
| 15DYS851-120416G-K | 12 | 4.16 | 49.5 |
| 15DYS851-190265G-K | 19 | 2.65 | 50.4 |
| 15DYS851-240210G-K | 24 | 2.10 | 50.4 |
| 15DYS851-480105G-K | 48 | 1.05 | 50.4 |

Input Data

| | Min | Typical | Max | Units | Notes |
|-----------------|-----|---------|------|-------|------------------------------|
| Input Voltage | 90 | -- | 264 | V AC | 100-240VAC +/- 10% |
| Input Frequency | 47 | -- | 63 | Hz | 50-60Hz +/- 5% |
| Input Current | -- | -- | 1.3 | A | |
| Inrush Current | -- | -- | 60 | A | At cold start, 100 / 240V AC |
| Leakage Current | -- | -- | 0.25 | mA | |

Output Data

| | Min | Typical | Max | Units | Notes |
|--------------------------|---|---------|-----|-------|-----------------|
| Output Voltage | -- | 5 | -- | % | |
| Ripple & Noise | 150 | -- | 240 | mVp-p | Model dependant |
| Over Current Protection | Over Current Point Limited >2.16A | | | | |
| Short Circuit Protection | Continuous short circuit proof. Will recover if fault condition is removed | | | | |
| Over Voltage Protection | Will recover if fault condition is removed | | | | |

Environmental Data

| | Min | Typical | Max | Units | Notes |
|-----------------------|-----|---------|-----|-------|----------------------|
| Operating Temperature | 0 | | +40 | °C | |
| Storage Temperature | -20 | | +80 | °C | |
| Operating Humidity | 10 | | 90 | °C | Operating 10% to 90% |
| Storage Humidity | 5 | | 95 | °C | Storage 5% to 95% |

Other Information

| | | | | | |
|------------|--|--|--|--|--|
| MTBF | 50,000hrs At 25°C, Full load, and nominal | | | | |
| Isolation | Primary to Secondary: 4242VDC/5mAMax (3 seconds) | | | | |
| Dimensions | Refer to mechanical drawings | | | | |

EMC Emissions (2014/30/EU)

| | Standard | Test Level | Criteria | Notes |
|-------------------|--------------|------------|----------|---|
| Conducted | EN 55032 | Pass | B | EMC Directive 2014/30/EU |
| Radiated | EN 55032 | Pass | B | |
| Harmonic Standard | EN 61000-3-2 | | Class D | P.F. shall >0.95 @100Vac input and >0.9 @240Vac input |

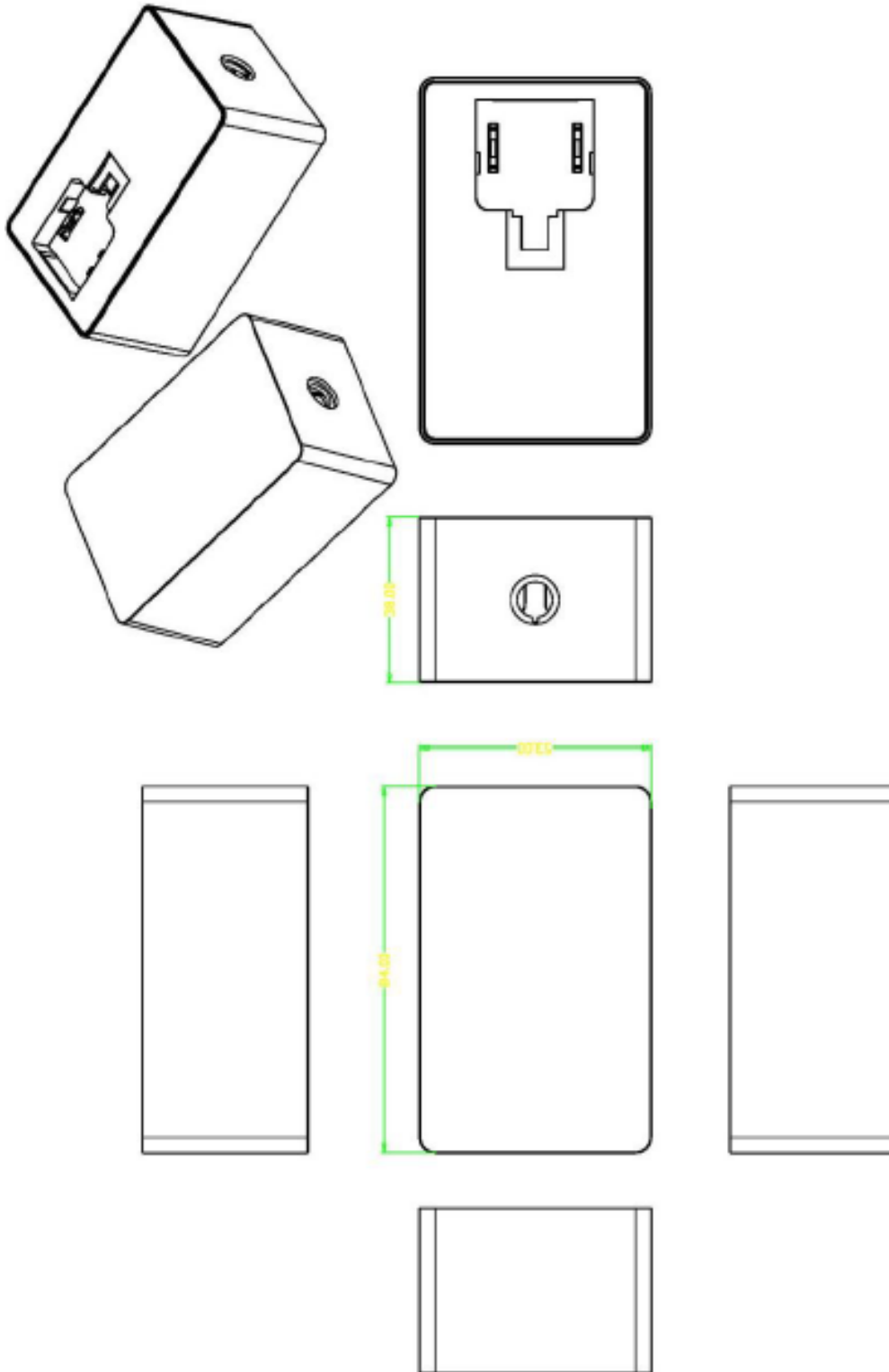
EMI/EMS Immunity (2014/30/EU)

| | Standard | Test Level | Criteria | Notes |
|-------|------------------|------------|----------|--|
| EMS | IEC/EN 60601-1-2 | | | |
| EMS | EN 55035 | | | |
| ESD | IEC 61000-4-2 | | B | Contact: +/- 4KV; Air: +/- 8KV |
| RS | IEC 61000-4-3 | | | Frequency: 80-1000MHz; Field Strength: 3V/M ' 80% AM (1KHz) |
| EFT | IEC 61000-4-4 | | A/B | 0.5/1.0KV on input AC power ports |
| Surge | IEC 61000-4-5 | | A | Line to Line: +/- 1KV (peak); Line to F.G: +/- 2KV (peak) |

Safety Approvals

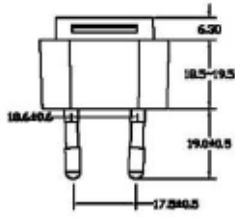
| | Safety Standards |
|-----------------------------|---|
| RoHS/REACH | RoHS Directive (EU) 2015/863 & REACH (205 SVHC) |
| CE LVD Directive 2014/35/EU | Yes (UK/European) |
| cULus | Yes |
| TUV | Yes |
| RCM & C-Tick | Yes |

Mechanical Drawing

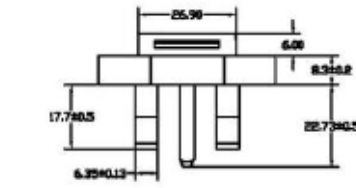
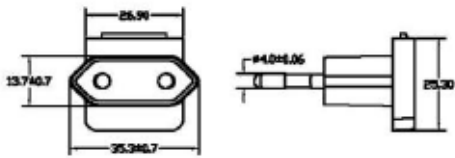


AC – DC

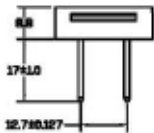
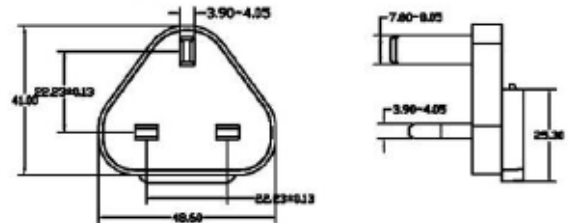
Mechanical Drawing



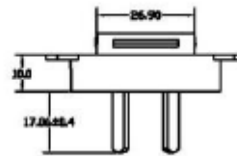
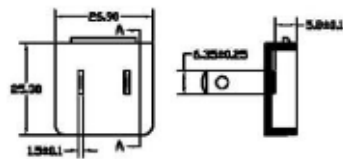
VDE PIN



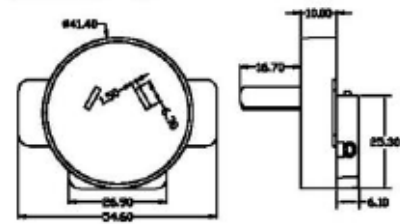
BS PIN



UL PIN

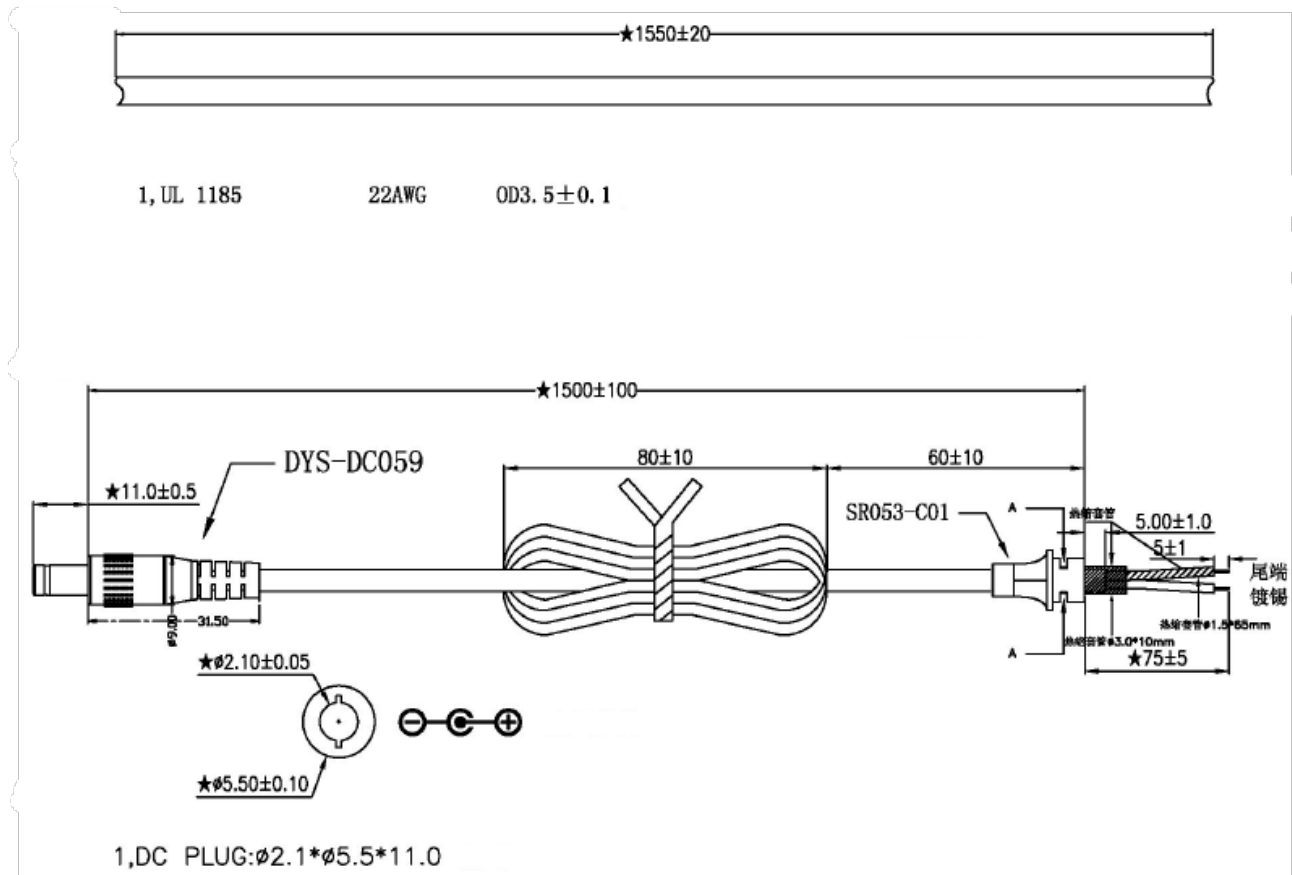


SAA PIN



AC - DC

Mechanical Drawing



AC - DC

| Model Number | Output Cable |
|--------------------|--------------------|
| 15DYS851-120416G-K | 1.55m UL1185 18AWG |
| 15DYS851-190265G-K | 1.55m UL1185 22AWG |
| 15DYS851-240210G-K | 1.55m UL1185 22AWG |
| 15DYS851-480105G-K | 1.55m UL1185 22AWG |