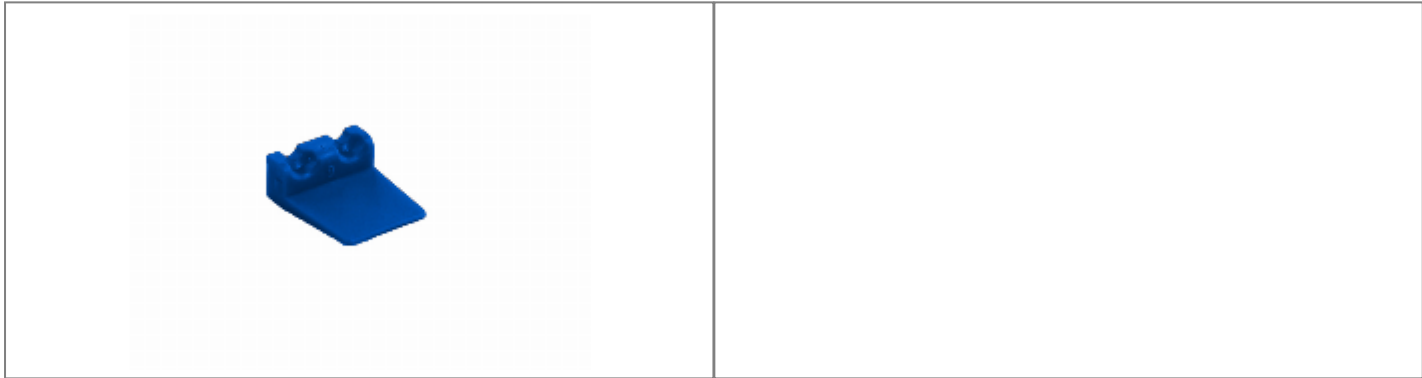




WLPS02 Datasheet

Product Name // 2 Contacts Socket Power Wedgelock

 [View Product Page](#)




// Product Description:


 2 Contacts Socket Power Wedgelock	 Operating Temperature= -55Å°C to +125Å°C
---	--


// General Information:

Product Display Title:	2 Contacts Socket Power Wedgelock
Product Family:	Rectangular Connectors
Product Series:	Power Rectangular Connectors- Wedgelocks
Body Colour:	Blue
Body Material:	Polycarbonate/Polybutylene Terephthalate (PC/PBT)
Contact Type:	Socket Contact
Function:	Wedgelock
Max Operating Temperature:	+125°C
Min Operating Temperature:	-55°C
Number Of Contacts:	2 Contacts
Rohs Compliant:	Yes

// Product PDF Links

 [Rectangular Power Connector...](#)

 Have a question or project enquiry you'd like to talk to us about?

 [Click Here To Contact Us](#)