

Han® CC Push-In module, female 1,5-6mm²

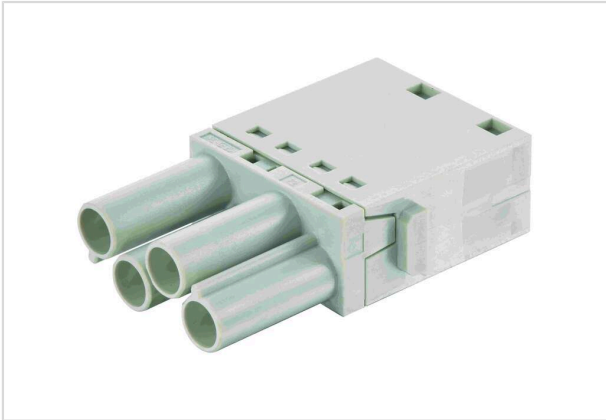


Image is for illustration purposes only. Please refer to product description.

Part number	09 14 004 5101
Specification	Han® CC Push-In module, female 1,5-6mm ²
HARTING eCatalogue	https://b2b.harting.com/09140045101

Identification

Category	Modules
Series	Han-Modular®
Type of module	Han® CC Protected module
Size of the module	Single module

Version

Termination method	Push-In
Gender	Female
Number of contacts	4

Technical characteristics

Conductor cross-section	1.5 ... 6 mm ²
Rated current	40 A
Rated voltage	830 V
Rated impulse voltage	8 kV
Pollution degree	3
Insulation resistance	>10 ¹⁰ Ω
Limiting temperature	-40 ... +125 °C
Mating cycles	≥500

Material properties

Material (insert)	Polycarbonate (PC)
Colour (insert)	RAL 7032 (pebble grey)



Pushing Performance
Since 1945

Material properties

Material flammability class acc. to UL 94	V-0
---	-----

Specifications and approvals

Specifications	IEC 60664-1
	IEC 61984
	IEC 61373 Category 2
	IEC 60352-7

Commercial data

Packaging size	2
Country of origin	Germany
European customs tariff number	85389099
eCl@ss	27440217 Module for industrial connectors (power/signals)