

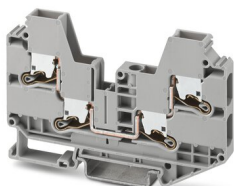
# XTV 6-QUATTRO - Feed-through terminal block



1329511

<https://www.phoenixcontact.com/in/products/1329511>

Please be informed that the data shown in this PDF document is generated from our Online Catalog. Please find the complete data in the user documentation. Our General Terms of Use for Downloads are valid.



Feed-through terminal block, nom. voltage: 1000 V, nominal current: 41 A, number of connections: 4, number of positions: 1, connection method: Push-X-connection, Rated cross section: 6 mm<sup>2</sup>, cross section: 0.5 mm<sup>2</sup> - 10 mm<sup>2</sup>, mounting type: NS 35/7,5, NS 35/15, color: gray

## Your advantages

- Fast, powerless conductor connection for all conductor types with the pretensioned contact spring
- A high level of flexibility when inserting conductors enables conductors with or without ferrules to be connected easily
- Clear conductor connection with the lateral connection direction and the clear pusher position
- Easy procurement of information – the QR code on the terminal block provides all important information about the product
- Terminal blocks with Push-X connection are part of the COMPLETE line system

## Commercial Data

Item number	1329511
Packing unit	50 pc
Minimum order quantity	50 pc
Sales Key	*****
Product Key	BE2513
GTIN	4063151624422
Weight per Piece (including packing)	31.13 g
Weight per Piece (excluding packing)	31.13 g
Customs tariff number	85369010
Country of origin	CN

# XTV 6-QUATTRO - Feed-through terminal block



1329511

<https://www.phoenixcontact.com/in/products/1329511>

## Technical Data

### Notes

#### General

Note	The max. load current must not be exceeded by the total current of all connected conductors.
------	--

### Product properties

Product type	Feed-through terminal block
Number of positions	1
Area of application	Railway industry
	Machine building
	Plant engineering
Number of connections	4
Number of rows	1

#### Insulation characteristics

Overvoltage category	III
Degree of pollution	3

### Electrical properties

Rated surge voltage	8 kV
Maximum power dissipation for nominal condition	1.31 W

### Connection data

Number of connections per level	4
Nominal cross section	6 mm <sup>2</sup>
Stripping length	10 mm ... 12 mm
Internal cylindrical gage	A5
	B4
Connection in acc. with standard	IEC 60947-7-1
Conductor cross section rigid	0.5 mm <sup>2</sup> ... 10 mm <sup>2</sup>
Cross section AWG	20 ... 8 (converted acc. to IEC)
Conductor cross section flexible	1.5 mm <sup>2</sup> ... 10 mm <sup>2</sup>
Conductor cross section, flexible [AWG]	14 ... 8 (converted acc. to IEC)
Conductor cross-section flexible (ferrule without plastic sleeve)	1.5 mm <sup>2</sup> ... 6 mm <sup>2</sup>
Flexible conductor cross section (ferrule with plastic sleeve)	1.5 mm <sup>2</sup> ... 6 mm <sup>2</sup>
2 conductors with the same cross section, flexible, with TWIN ferrule with plastic sleeve	1.5 mm <sup>2</sup> ... 4 mm <sup>2</sup>
Nominal current	41 A
Maximum load current	52 A (With 10 mm <sup>2</sup> conductor cross-section, rigid)
Nominal voltage	1000 V
Nominal cross section	6 mm <sup>2</sup>

# XTV 6-QUATTRO - Feed-through terminal block



1329511

<https://www.phoenixcontact.com/in/products/1329511>

## Dimensions

Width	8.2 mm
End cover width	2.2 mm
Height	90.6 mm
Height NS 35/15	66.6 mm
Height NS 35/7,5	59.1 mm
Depth	57.6 mm
Length	90.6 mm

## Material specifications

Color	gray
Flammability rating according to UL 94	V0
Insulating material group	I
Insulating material	PA
Static insulating material application in cold	-60 °C
Relative insulation material temperature index (Elec., UL 746 B)	130 °C
Fire protection for rail vehicles (DIN EN 45545-2) R22	HL 1 - HL 3
Fire protection for rail vehicles (DIN EN 45545-2) R23	HL 1 - HL 3
Fire protection for rail vehicles (DIN EN 45545-2) R24	HL 1 - HL 3
Fire protection for rail vehicles (DIN EN 45545-2) R26	HL 1 - HL 3
Surface flammability NFPA 130 (ASTM E 162)	passed
Specific optical density of smoke NFPA 130 (ASTM E 662)	passed
Smoke gas toxicity NFPA 130 (SMP 800C)	passed

## Electrical tests

### Surge voltage test

Result	Test passed
--------	-------------

### Temperature-rise test

Requirement temperature-rise test	Increase in temperature $\leq 45$ K
Result	Test passed
Short-time withstand current 6 mm <sup>2</sup>	0.72 kA
Result	Test passed

### Power-frequency withstand voltage

Test voltage setpoint	2.2 kV
Result	Test passed

## Mechanical properties

### Mechanical data

Open side panel	Yes
-----------------	-----

## Mechanical tests

# XTV 6-QUATTRO - Feed-through terminal block



1329511

<https://www.phoenixcontact.com/in/products/1329511>

## Mechanical strength

Result	Test passed
--------	-------------

## Attachment on the carrier

DIN rail/fixing support	NS 32/NS 35
Result	Test passed

## Test for conductor damage and slackening

Rotation speed	9 rpm
Revolutions	135
Conductor cross section/weight	0.5 mm <sup>2</sup> / 0.3 kg
	6 mm <sup>2</sup> / 1.4 kg
	10 mm <sup>2</sup> / 2 kg
Result	Test passed

## Environmental and real-life conditions

### Aging

Temperature cycles	192
	192
Result	Test passed
	Test passed

### Needle-flame test

Time of exposure	30 s
Result	Test passed

### Oscillation/broadband noise

Specification	DIN EN 50155 (VDE 0115-200):2022-06
Spectrum	Service life test category 2, bogie-mounted
Frequency	$f_1 = 5 \text{ Hz}$ to $f_2 = 250 \text{ Hz}$
ASD level	6.12 (m/s <sup>2</sup> ) <sup>2</sup> /Hz
Acceleration	3.12g
Test duration per axis	5 h
Test directions	X-, Y- and Z-axis
Result	Test passed

### Shocks

Specification	DIN EN 50155 (VDE 0115-200):2022-06
Pulse shape	Half-sine
Acceleration	30g
Shock duration	18 ms
Number of shocks per direction	3
Test directions	X-, Y- and Z-axis (pos. and neg.)
Result	Test passed

### Ambient conditions

# XTV 6-QUATTRO - Feed-through terminal block



1329511

<https://www.phoenixcontact.com/in/products/1329511>

Ambient temperature (operation)	-60 °C ... 105 °C (max. short-term operating temperature RTI Elec.)
Ambient temperature (storage/transport)	-25 °C ... 60 °C (for a short time, not exceeding 24 h, -60 °C to +70 °C)
Ambient temperature (assembly)	-5 °C ... 70 °C
Ambient temperature (actuation)	-5 °C ... 70 °C
Permissible humidity (storage/transport)	30 % ... 70 %

## Standards and regulations

Connection in acc. with standard	IEC 60947-7-1
----------------------------------	---------------

## Mounting

Mounting type	NS 35/7,5
	NS 35/15

# XTV 6-QUATTRO - Feed-through terminal block



1329511

<https://www.phoenixcontact.com/in/products/1329511>

## Drawings

Circuit diagram



# XTV 6-QUATTRO - Feed-through terminal block




1329511


<https://www.phoenixcontact.com/in/products/1329511>

## Approvals

To download certificates, visit the product detail page: <https://www.phoenixcontact.com/in/products/1329511>

 <b>CSA</b> Approval ID: 13631				
	Nominal Voltage $U_N$	Nominal Current $I_N$	Cross Section AWG	Cross Section $\text{mm}^2$
Use group B	600 V	40 A	14 - 8	-
Use group C	600 V	40 A	14 - 8	-

 <b>cULus Recognized</b> Approval ID: E60425				
--	--	--	--	--

 <b>cULus Recognized</b> Approval ID: E60425				
--	--	--	--	--

# XTV 6-QUATTRO - Feed-through terminal block



1329511

<https://www.phoenixcontact.com/in/products/1329511>

## Classifications

### ECLASS

ECLASS-11.0	27141120
ECLASS-13.0	27250101

### ETIM

ETIM 8.0	EC000897
----------	----------

### UNSPSC

UNSPSC 21.0	39121400
-------------	----------



# XTV 6-QUATTRO - Feed-through terminal block

1329511

<https://www.phoenixcontact.com/in/products/1329511>

## Accessories

 Note: Applying some accessories below might limit this product.

### FBS 2-8 - Plug-in bridge

3030284

<https://www.phoenixcontact.com/in/products/3030284>



Plug-in bridge, pitch: 8.2 mm, number of positions: 2, color: red

### FBS 3-8 - Plug-in bridge

3030297

<https://www.phoenixcontact.com/in/products/3030297>



Plug-in bridge, pitch: 8.2 mm, number of positions: 3, color: red

# XTV 6-QUATTRO - Feed-through terminal block

1329511

<https://www.phoenixcontact.com/in/products/1329511>



## FBS 4-8 - Plug-in bridge

3030307

<https://www.phoenixcontact.com/in/products/3030307>



Plug-in bridge, pitch: 8.2 mm, number of positions: 4, color: red

---

## FBS 5-8 - Plug-in bridge

3030310

<https://www.phoenixcontact.com/in/products/3030310>



Plug-in bridge, pitch: 8.2 mm, number of positions: 5, color: red

# XTV 6-QUATTRO - Feed-through terminal block

1329511

<https://www.phoenixcontact.com/in/products/1329511>



## FBS 6-8 - Plug-in bridge

3032470

<https://www.phoenixcontact.com/in/products/3032470>



Plug-in bridge, pitch: 8.2 mm, number of positions: 6, color: red

---

## FBS 10-8 - Plug-in bridge

3030323

<https://www.phoenixcontact.com/in/products/3030323>



Plug-in bridge, pitch: 8.2 mm, number of positions: 10, color: red

# XTV 6-QUATTRO - Feed-through terminal block

1329511

<https://www.phoenixcontact.com/in/products/1329511>



## FBS 2-8 CT - Plug-in bridge

3033830

<https://www.phoenixcontact.com/in/products/3033830>



Plug-in bridge, pitch: 8.2 mm, number of positions: 2, color: orange

---

## FBS 3-8 CT - Plug-in bridge

3033831

<https://www.phoenixcontact.com/in/products/3033831>



Plug-in bridge, pitch: 8.2 mm, number of positions: 3, color: orange

# XTV 6-QUATTRO - Feed-through terminal block

1329511

<https://www.phoenixcontact.com/in/products/1329511>



## FBS 4-8 CT - Plug-in bridge

3033832

<https://www.phoenixcontact.com/in/products/3033832>



Plug-in bridge, pitch: 8.2 mm, number of positions: 4, color: orange

---

## FBS 10-8 CT - Plug-in bridge

3033833

<https://www.phoenixcontact.com/in/products/3033833>



Plug-in bridge, pitch: 8.2 mm, number of positions: 10, color: orange

# XTV 6-QUATTRO - Feed-through terminal block

1329511

<https://www.phoenixcontact.com/in/products/1329511>



## FBS 2-8 BU - Plug-in bridge

3032567

<https://www.phoenixcontact.com/in/products/3032567>



Plug-in bridge, pitch: 8.2 mm, number of positions: 2, color: blue

---

## FBS 3-8 BU - Plug-in bridge

3032570

<https://www.phoenixcontact.com/in/products/3032570>



Plug-in bridge, pitch: 8.2 mm, number of positions: 3, color: blue

# XTV 6-QUATTRO - Feed-through terminal block

1329511

<https://www.phoenixcontact.com/in/products/1329511>



## FBS 4-8 BU - Plug-in bridge

3032583

<https://www.phoenixcontact.com/in/products/3032583>



Plug-in bridge, pitch: 8.2 mm, number of positions: 4, color: blue

---

## FBS 5-8 BU - Plug-in bridge

3032596

<https://www.phoenixcontact.com/in/products/3032596>



Plug-in bridge, pitch: 8.2 mm, number of positions: 5, color: blue

# XTV 6-QUATTRO - Feed-through terminal block

1329511

<https://www.phoenixcontact.com/in/products/1329511>



## FBS 6-8 BU - Plug-in bridge

3032677

<https://www.phoenixcontact.com/in/products/3032677>



Plug-in bridge, pitch: 8.2 mm, number of positions: 6, color: blue

---

## FBS 10-8 BU - Plug-in bridge

3032606

<https://www.phoenixcontact.com/in/products/3032606>



Plug-in bridge, pitch: 8.2 mm, number of positions: 10, color: blue



# XTV 6-QUATTRO - Feed-through terminal block

1329511

<https://www.phoenixcontact.com/in/products/1329511>



## FBS 2-8 GY - Plug-in bridge

3032621

<https://www.phoenixcontact.com/in/products/3032621>



Plug-in bridge, pitch: 8.2 mm, number of positions: 2, color: gray

---

## FBS 3-8 GY - Plug-in bridge

3032622

<https://www.phoenixcontact.com/in/products/3032622>



Plug-in bridge, pitch: 8.2 mm, number of positions: 3, color: gray

# XTV 6-QUATTRO - Feed-through terminal block

1329511

<https://www.phoenixcontact.com/in/products/1329511>



## FBS 4-8 GY - Plug-in bridge

3032635

<https://www.phoenixcontact.com/in/products/3032635>



Plug-in bridge, pitch: 8.2 mm, number of positions: 4, color: gray

---

## FBS 5-8 GY - Plug-in bridge

3032648

<https://www.phoenixcontact.com/in/products/3032648>



Plug-in bridge, pitch: 8.2 mm, number of positions: 5, color: gray

# XTV 6-QUATTRO - Feed-through terminal block

1329511

<https://www.phoenixcontact.com/in/products/1329511>



## FBS 6-8 GY - Plug-in bridge

3032664

<https://www.phoenixcontact.com/in/products/3032664>



Plug-in bridge, pitch: 8.2 mm, number of positions: 6, color: gray

---

## FBS 10-8 GY - Plug-in bridge

3032651

<https://www.phoenixcontact.com/in/products/3032651>



Plug-in bridge, pitch: 8.2 mm, number of positions: 10, color: gray

# XTV 6-QUATTRO - Feed-through terminal block

1329511

<https://www.phoenixcontact.com/in/products/1329511>

## FBSRH 2-8 - Short-circuit connector

3033802

<https://www.phoenixcontact.com/in/products/3033802>



Short-circuit connector, pitch: 8.2 mm, number of positions: 2, color: red

---

## FBSRH 3-8 - Short-circuit connector

3033803

<https://www.phoenixcontact.com/in/products/3033803>



Short-circuit connector, pitch: 8.2 mm, number of positions: 3, color: red

# XTV 6-QUATTRO - Feed-through terminal block

1329511

<https://www.phoenixcontact.com/in/products/1329511>



## FBSRH 4-8 - Short-circuit connector

3033804

<https://www.phoenixcontact.com/in/products/3033804>



Short-circuit connector, pitch: 8.2 mm, number of positions: 4, color: red

---

## FBSR 2-8 - Plug-in bridge

3033808

<https://www.phoenixcontact.com/in/products/3033808>



Plug-in bridge, pitch: 8.2 mm, number of positions: 2, color: red

# XTV 6-QUATTRO - Feed-through terminal block

1329511

<https://www.phoenixcontact.com/in/products/1329511>



## FBSR 3-8 - Plug-in bridge

3001597

<https://www.phoenixcontact.com/in/products/3001597>



Plug-in bridge, pitch: 8.2 mm, number of positions: 3, color: red

---

## FBSR 4-8 - Plug-in bridge

3000585

<https://www.phoenixcontact.com/in/products/3000585>



Plug-in bridge, pitch: 8.2 mm, number of positions: 4, color: red

# XTV 6-QUATTRO - Feed-through terminal block

1329511

<https://www.phoenixcontact.com/in/products/1329511>



## FBSR 5-8 - Plug-in bridge

3033809

<https://www.phoenixcontact.com/in/products/3033809>



Plug-in bridge, pitch: 8.2 mm, number of positions: 5, color: red

---

## FBSR 10-8 - Plug-in bridge

3001599

<https://www.phoenixcontact.com/in/products/3001599>



Plug-in bridge, pitch: 8.2 mm, number of positions: 10, color: red

# XTV 6-QUATTRO - Feed-through terminal block

1329511

<https://www.phoenixcontact.com/in/products/1329511>



## FBSR 16-8 - Plug-in bridge

3033816

<https://www.phoenixcontact.com/in/products/3033816>



Plug-in bridge, pitch: 8.2 mm, number of positions: 16, color: red

---

## SB-MER 2-8 - Switching jumper

3000587

<https://www.phoenixcontact.com/in/products/3000587>



Switching jumper, pitch: 8.2 mm, number of positions: 2, length: 25 mm, color: gray/orange



# XTV 6-QUATTRO - Feed-through terminal block



1329511

<https://www.phoenixcontact.com/in/products/1329511>

## SB-MER 3-8 - Switching jumper

3000588

<https://www.phoenixcontact.com/in/products/3000588>



Switching jumper, pitch: 8.2 mm, number of positions: 3, length: 25 mm, color: gray/orange

---

## SB-MER 4-8 - Switching jumper

3000589

<https://www.phoenixcontact.com/in/products/3000589>



Switching jumper, pitch: 8.2 mm, number of positions: 4, length: 25 mm, color: gray/orange

# XTV 6-QUATTRO - Feed-through terminal block

1329511

<https://www.phoenixcontact.com/in/products/1329511>


## RB ST 6-(2,5/4) - Reducing bridge

3030860

<https://www.phoenixcontact.com/in/products/3030860>



Reducing bridge, pitch: 9 mm, number of positions: 2, length: 30 mm, color: red

 Max. current carrying capacity: 35 A

---


## RB 16-6 - Reducing bridge

3047072

<https://www.phoenixcontact.com/in/products/3047072>



Reducing bridge, pitch: 12.2 mm, number of positions: 2, color: red

 Max. current carrying capacity: 37 A

# XTV 6-QUATTRO - Feed-through terminal block



1329511

<https://www.phoenixcontact.com/in/products/1329511>

## D-XTV 6-QUATTRO - End cover

1329517

<https://www.phoenixcontact.com/in/products/1329517>

End cover, length: 90.6 mm, width: 2.2 mm, height: 51.4 mm, color: gray



---

## ATP-XTV 6-QUATTRO - Partition plate

1398831

<https://www.phoenixcontact.com/in/products/1398831>

Partition plate, length: 100.6 mm, width: 2.2 mm, height: 53.6 mm, color: gray



# XTV 6-QUATTRO - Feed-through terminal block



1329511

<https://www.phoenixcontact.com/in/products/1329511>

## SZF 2-0,8X4,0 - Screwdriver

1204520

<https://www.phoenixcontact.com/in/products/1204520>



Actuation tool, for ST terminal blocks, also suitable for use as a bladed screwdriver, size: 0.8 x 4.0 x 100 mm, 2-component grip, with non-slip grip

---

## AI 1,5 -10 BK - Ferrule

3200195

<https://www.phoenixcontact.com/in/products/3200195>



Ferrule, sleeve length: 10 mm, length: 16 mm, color: black

# XTV 6-QUATTRO - Feed-through terminal block

1329511

<https://www.phoenixcontact.com/in/products/1329511>

AI 1,5 -10 BK-1000 - Ferrule

3203134

<https://www.phoenixcontact.com/in/products/3203134>



Ferrule, sleeve length: 10 mm, length: 18 mm, color: black

---

AI 1,5 -12 BK - Ferrule

3201482

<https://www.phoenixcontact.com/in/products/3201482>



Ferrule, sleeve length: 12 mm, length: 18 mm, color: black

# XTV 6-QUATTRO - Feed-through terminal block

1329511

<https://www.phoenixcontact.com/in/products/1329511>

## AI 2,5 -10 BU - Ferrule

3202533

<https://www.phoenixcontact.com/in/products/3202533>



Ferrule, sleeve length: 10 mm, length: 17 mm, color: blue

---

## AI 2,5 -10 BU-1000 - Ferrule

3203147

<https://www.phoenixcontact.com/in/products/3203147>



Ferrule, sleeve length: 10 mm, length: 17 mm, color: blue

# XTV 6-QUATTRO - Feed-through terminal block

1329511

<https://www.phoenixcontact.com/in/products/1329511>

## AI 2,5 -12 BU - Ferrule

3200962

<https://www.phoenixcontact.com/in/products/3200962>



Ferrule, sleeve length: 12 mm, length: 18 mm, color: blue

---

## AI 4 -10 GY - Ferrule

3200535

<https://www.phoenixcontact.com/in/products/3200535>



Ferrule, sleeve length: 10 mm, length: 17 mm, color: gray

# XTV 6-QUATTRO - Feed-through terminal block

1329511

<https://www.phoenixcontact.com/in/products/1329511>

## AI 4 -12 GY - Ferrule

3200959

<https://www.phoenixcontact.com/in/products/3200959>



Ferrule, sleeve length: 12 mm, length: 20 mm, color: gray

---

## AI 6 -12 YE - Ferrule

3200548

<https://www.phoenixcontact.com/in/products/3200548>



Ferrule, sleeve length: 12 mm, length: 20 mm, color: yellow



# XTV 6-QUATTRO - Feed-through terminal block



1329511

<https://www.phoenixcontact.com/in/products/1329511>

## CUTFOX 12 - Cable-cutting tool

1212128

<https://www.phoenixcontact.com/in/products/1212128>



**Cable cutter**, for copper and aluminum up to 12 mm diameter (up to 35 mm<sup>2</sup>)

---

## CUTFOX 18 - Cable-cutting tool

1212129

<https://www.phoenixcontact.com/in/products/1212129>



**Cable cutter**, angled, for copper and aluminum up to 18 mm diameter (up to 50 mm<sup>2</sup>)

# XTV 6-QUATTRO - Feed-through terminal block

1329511

<https://www.phoenixcontact.com/in/products/1329511>

## WIREFOX-E 10 - Stripping tool

1212706

<https://www.phoenixcontact.com/in/products/1212706>



Stripping tool, for cables and conductors from 0.02 - 10 mm<sup>2</sup>, self-adjusting, stripping length of up to 18 mm, cutting capacity of up to 10 mm<sup>2</sup> stranded/1.5 mm<sup>2</sup> solid, replaceable stripping blade

---

## WIREFOX 6SC - Stripping tool

1212158

<https://www.phoenixcontact.com/in/products/1212158>



Stripping tool, for cables and conductors (especially for cables protected against short circuits and ground leakages) 1.5 - 6 mm<sup>2</sup>, self-adjusting, stripping length of up to 18 mm, cutting capacity of up to 10 mm<sup>2</sup> stranded/1.5 mm<sup>2</sup> solid, replaceable stripping blade

# XTV 6-QUATTRO - Feed-through terminal block

1329511

<https://www.phoenixcontact.com/in/products/1329511>

## WIREFOX 10 - Stripping tool

1212150

<https://www.phoenixcontact.com/in/products/1212150>



Stripping tool, for cables and conductors from 0.02 - 10 mm<sup>2</sup>, self-adjusting, stripping length of up to 18 mm, cutting capacity of up to 10 mm<sup>2</sup> stranded/1.5 mm<sup>2</sup> solid, replaceable stripping blade

---

## CRIMPFOX DUO 16S - Crimping pliers

1202877

<https://www.phoenixcontact.com/in/products/1202877>



Crimping pliers, contact type: insulated and uninsulated ferrules, standards/regulations: DIN 46228-1, DIN 46228-4, UL 486F, Form A, E, F, cross-section, minimum: 0.14 mm<sup>2</sup>, cross-section, maximum: 16 mm<sup>2</sup>, for TWIN ferrules up to 2 mm<sup>2</sup> x 6 mm<sup>2</sup>, automatic cross-section adjustment, rotating dies, lateral and front entry, crimping: square

# XTV 6-QUATTRO - Feed-through terminal block

1329511

<https://www.phoenixcontact.com/in/products/1329511>

## CRIMPFOX 10S - Crimping pliers

1212045

<https://www.phoenixcontact.com/in/products/1212045>



Crimping pliers, for ferrules without insulating collar according to DIN 46228 Part 1 and ferrules with insulating collar according to DIN 46228 Part 4, 0.14 mm<sup>2</sup> ... 10 mm<sup>2</sup>, unlockable pressure lock, lateral entry

---

## CRIMPFOX CENTRUS 10H - Crimping pliers

1213156

<https://www.phoenixcontact.com/in/products/1213156>



Crimping pliers, for uninsulated and insulated ferrules, DIN 46228 Part 1 and 4, from 0.14 mm<sup>2</sup> ... 10 mm<sup>2</sup>, also for TWIN ferrules up to 2 x 4 mm<sup>2</sup>, automatic cross section adjustment, lateral insertion, equipped with fall protection

# XTV 6-QUATTRO - Feed-through terminal block

1329511

<https://www.phoenixcontact.com/in/products/1329511>

## NS 35/ 7,5 PERF 2000MM - DIN rail perforated

0801733

<https://www.phoenixcontact.com/in/products/0801733>



DIN rail perforated, acc. to EN 60715, material: Steel, galvanized, passivated with a thick layer, Standard profile, color: silver, Pack of 25 (50 m)

---

## NS 35/ 7,5 UNPERF 2000MM - DIN rail, unperforated

0801681

<https://www.phoenixcontact.com/in/products/0801681>



DIN rail, unperforated, acc. to EN 60715, material: Steel, galvanized, passivated with a thick layer, Standard profile, color: silver, Pack of 25 (50 m)

# XTV 6-QUATTRO - Feed-through terminal block

1329511

<https://www.phoenixcontact.com/in/products/1329511>



## NS 35/ 7,5 WH PERF 2000MM - DIN rail perforated

1204119

<https://www.phoenixcontact.com/in/products/1204119>



DIN rail perforated, acc. to EN 60715, material: Steel, Galvanized, white passivated, Standard profile, color: silver, Pack of 25 (50 m)

---

## NS 35/ 7,5 WH UNPERF 2000MM-VPE 10 - DIN rail, unperforated

1204122

<https://www.phoenixcontact.com/in/products/1204122>



DIN rail, unperforated, acc. to EN 60715, material: Steel, Galvanized, white passivated, Standard profile, color: silver, Pack of 10 (20 m)

# XTV 6-QUATTRO - Feed-through terminal block

1329511

<https://www.phoenixcontact.com/in/products/1329511>



## NS 35/ 7,5 AL UNPERF 2000MM - DIN rail, unperforated

0801704

<https://www.phoenixcontact.com/in/products/0801704>



DIN rail, unperforated, acc. to EN 60715, material: Aluminum, uncoated, Standard profile, color: silver, Pack of 25 (50 m)

---

## NS 35/ 7,5 ZN PERF 2000MM - DIN rail perforated

1206421

<https://www.phoenixcontact.com/in/products/1206421>



DIN rail perforated, acc. to EN 60715, material: Steel, galvanized, Standard profile, color: silver, Pack of 25 (50 m)

# XTV 6-QUATTRO - Feed-through terminal block

1329511

<https://www.phoenixcontact.com/in/products/1329511>



## NS 35/ 7,5 ZN UNPERF 2000MM - DIN rail, unperforated

1206434

<https://www.phoenixcontact.com/in/products/1206434>



DIN rail, unperforated, acc. to EN 60715, material: Steel, galvanized, Standard profile, color: silver, Pack of 25 (50 m)

---

## NS 35/ 7,5 CU UNPERF 2000MM-VPE 10 - DIN rail, unperforated

0801762

<https://www.phoenixcontact.com/in/products/0801762>



DIN rail, unperforated, acc. to EN 60715, material: Copper, uncoated, Standard profile, color: copper-colored, Pack of 10 (20 m)



# XTV 6-QUATTRO - Feed-through terminal block

1329511

<https://www.phoenixcontact.com/in/products/1329511>



## NS 35/ 7,5 CAP - End cap

1206560

<https://www.phoenixcontact.com/in/products/1206560>

DIN rail end piece, for DIN rail NS 35/7.5



---

## NS 35/15 PERF 2000MM - DIN rail perforated

1201730

<https://www.phoenixcontact.com/in/products/1201730>



DIN rail perforated, similar to EN 60715, material: Steel, galvanized, passivated with a thick layer, Standard profile, color: silver, Pack of 25 (50 m)

# XTV 6-QUATTRO - Feed-through terminal block

1329511

<https://www.phoenixcontact.com/in/products/1329511>



## NS 35/15 UNPERF 2000MM - DIN rail, unperforated

1201714

<https://www.phoenixcontact.com/in/products/1201714>



DIN rail, unperforated, similar to EN 60715, material: Steel, galvanized, passivated with a thick layer, Standard profile, color: silver, Pack of 25 (50 m)

---

## NS 35/15 WH PERF 2000MM - DIN rail perforated

0806602

<https://www.phoenixcontact.com/in/products/0806602>



DIN rail perforated, similar to EN 60715, material: Steel, Galvanized, white passivated, Standard profile, color: white, Pack of 25 (50 m)

# XTV 6-QUATTRO - Feed-through terminal block

1329511

<https://www.phoenixcontact.com/in/products/1329511>



## NS 35/15 WH UNPERF 2000MM-VPE 10 - DIN rail, unperforated

1204135

<https://www.phoenixcontact.com/in/products/1204135>



DIN rail, unperforated, similar to EN 60715, material: Steel, Galvanized, white passivated, Standard profile, color: silver, Pack of 10 (20 m)

---

## NS 35/15 AL UNPERF 2000MM - DIN rail, unperforated

1201756

<https://www.phoenixcontact.com/in/products/1201756>



DIN rail, unperforated, similar to EN 60715, material: Aluminum, uncoated, Standard profile, color: silver

# XTV 6-QUATTRO - Feed-through terminal block

1329511

<https://www.phoenixcontact.com/in/products/1329511>

## NS 35/15 ZN PERF 2000MM - DIN rail perforated

1206599

<https://www.phoenixcontact.com/in/products/1206599>



DIN rail perforated, similar to EN 60715, material: Steel, galvanized, Standard profile, color: silver, Pack of 25 (50 m)

---

## NS 35/15 ZN UNPERF 2000MM - DIN rail, unperforated

1206586

<https://www.phoenixcontact.com/in/products/1206586>



DIN rail, unperforated, similar to EN 60715, material: Steel, galvanized, Standard profile, color: silver, Pack of 25 (50 m)

# XTV 6-QUATTRO - Feed-through terminal block

1329511

<https://www.phoenixcontact.com/in/products/1329511>

## NS 35/15 CU UNPERF 2000MM-VPE 10 - DIN rail, unperforated

1201895

<https://www.phoenixcontact.com/in/products/1201895>



DIN rail, unperforated, similar to EN 60715, material: Copper, uncoated, Standard profile, color: copper-colored, Pack of 10 (20 m)

---

## NS 35/15 CAP - End cap

1206573

<https://www.phoenixcontact.com/in/products/1206573>

DIN rail end piece, for DIN rail NS 35/15



# XTV 6-QUATTRO - Feed-through terminal block



1329511

<https://www.phoenixcontact.com/in/products/1329511>

## NS 35/15-2,3 UNPERF 2000MM-VPE 10 - DIN rail, unperforated

1201798

<https://www.phoenixcontact.com/in/products/1201798>



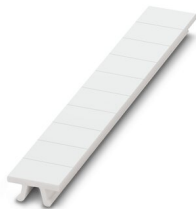
DIN rail, unperforated, acc. to EN 60715, material: Steel, galvanized, passivated with a thick layer, Standard profile 2.3 mm, color: silver, Pack of 10 (20 m)

---

## ZB 8:UNBEDRUCKT - Zack marker strip

1052002

<https://www.phoenixcontact.com/in/products/1052002>



Zack marker strip, Strip, white, unlabeled, can be labeled with: CMS-P1-PLOTTER, PLOTMARK, mounting type: snapped, for terminal block width: 8.2 mm, lettering field size: 10.5 x 8.15 mm, Number of individual labels: 10

# XTV 6-QUATTRO - Feed-through terminal block



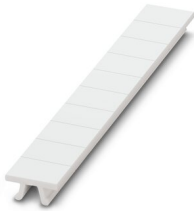
1329511

<https://www.phoenixcontact.com/in/products/1329511>

## ZB 8 CUS - Zack marker strip

0825011

<https://www.phoenixcontact.com/in/products/0825011>



Zack marker strip, can be ordered: Strip, white, labeled according to customer specifications, mounting type: snap into tall marker groove, for terminal block width: 8.2 mm, lettering field size: 10.5 x 8.15 mm, Number of individual labels: 10

---

## UC-TM 8 - Marker for terminal blocks

0818072

<https://www.phoenixcontact.com/in/products/0818072>



Marker for terminal blocks, Sheet, white, unlabeled, can be labeled with: BLUEMARK ID COLOR, BLUEMARK ID, BLUEMARK CLED, PLOTMARK, CMS-P1-PLOTTER, mounting type: snapped, for terminal block width: 8.2 mm, lettering field size: 7.6 x 10.5 mm, Number of individual labels: 56

# XTV 6-QUATTRO - Feed-through terminal block

1329511

<https://www.phoenixcontact.com/in/products/1329511>



## UC-TM 8 CUS - Marker for terminal blocks

0824597

<https://www.phoenixcontact.com/in/products/0824597>



Marker for terminal blocks, can be ordered: by sheet, white, labeled according to customer specifications, mounting type: snap into tall marker groove, for terminal block width: 8.2 mm, lettering field size: 7.6 x 10.5 mm, Number of individual labels: 56

---

## UCT-TM 8 - Marker for terminal blocks

0828740

<https://www.phoenixcontact.com/in/products/0828740>



Marker for terminal blocks, Sheet, white, unlabeled, can be labeled with: TOPMARK NEO, TOPMARK LASER, BLUEMARK ID COLOR, BLUEMARK ID, BLUEMARK CLED, THERMOMARK PRIME, THERMOMARK CARD 2.0, THERMOMARK CARD, mounting type: snapped, for terminal block width: 8.2 mm, lettering field size: 7.6 x 10.5 mm, Number of individual labels: 42



# XTV 6-QUATTRO - Feed-through terminal block

1329511

<https://www.phoenixcontact.com/in/products/1329511>



## UCT-TM 8 CUS - Marker for terminal blocks

0829616

<https://www.phoenixcontact.com/in/products/0829616>



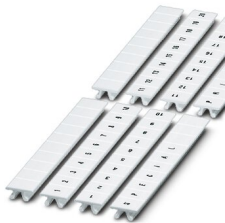
Marker for terminal blocks, can be ordered: by sheet, white, labeled according to customer specifications, mounting type: snap into tall marker groove, for terminal block width: 8.2 mm, lettering field size: 7.6 x 10.5 mm, Number of individual labels: 42

---

## ZB 8,LGS:FORTL.ZAHLEN - Zack marker strip

1052015

<https://www.phoenixcontact.com/in/products/1052015>



Zack marker strip, Strip, white, labeled, can be labeled with: CMS-P1-PLOTTER, printed horizontally: consecutive numbers 1 ... 10, 11 ... 20, etc. up to 91 ... 100, mounting type: snapped, for terminal block width: 8.2 mm, lettering field size: 10.5 x 8.15 mm, Number of individual labels: 10

# XTV 6-QUATTRO - Feed-through terminal block

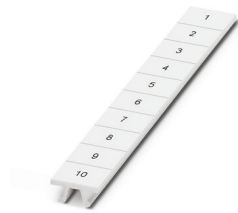
1329511

<https://www.phoenixcontact.com/in/products/1329511>

## ZB 8,QR:FORTL.ZAHLEN - Zack marker strip

1052028

<https://www.phoenixcontact.com/in/products/1052028>



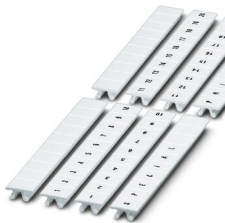
Zack marker strip, Strip, white, labeled, can be labeled with: CMS-P1-PLOTTER, Printed vertically: consecutive numbers 1 ... 10, 11 ... 20, etc. up to 91 ... 100, mounting type: snapped, for terminal block width: 8.2 mm, lettering field size: 10.5 x 8.15 mm, Number of individual labels: 10

---

## ZB 8,LGS:L1-N,PE - Marker for terminal blocks

1052413

<https://www.phoenixcontact.com/in/products/1052413>



Marker for terminal blocks, Strip, white, labeled, can be labeled with: CMS-P1-PLOTTER, horizontal: L1, L2, L3, N, PE, L1, L2, L3, N, PE, mounting type: snapped, for terminal block width: 8.2 mm, lettering field size: 10.5 x 8.15 mm, Number of individual labels: 10

# XTV 6-QUATTRO - Feed-through terminal block



1329511

<https://www.phoenixcontact.com/in/products/1329511>

## ZBF 8:UNBEDRUCKT - Zack Marker strip, flat

0808781

<https://www.phoenixcontact.com/in/products/0808781>



Zack Marker strip, flat, Strip, white, unlabeled, can be labeled with: PLOTMARK, CMS-P1-PLOTTER, mounting type: snapped, for terminal block width: 8 mm, lettering field size: 5.15 x 8.15 mm, Number of individual labels: 10

---

## ZBF 8 CUS - Zack Marker strip, flat

0825030

<https://www.phoenixcontact.com/in/products/0825030>



Zack Marker strip, flat, can be ordered: Strip, white, labeled according to customer specifications, mounting type: snap into flat marker groove, for terminal block width: 8 mm, lettering field size: 5.15 x 8.15 mm, Number of individual labels: 10

# XTV 6-QUATTRO - Feed-through terminal block



1329511

<https://www.phoenixcontact.com/in/products/1329511>

## ZBF 8,LGS:FORTL.ZAHLEN - Zack Marker strip, flat

0808804

<https://www.phoenixcontact.com/in/products/0808804>



Zack Marker strip, flat, Strip, white, labeled, printed horizontally: consecutive numbers 1 ... 10, 11 ... 20, etc. up to 101 ... 110, mounting type: snapped, for terminal block width: 8 mm, lettering field size: 5.15 x 8.15 mm, Number of individual labels: 10

---

## UC-TMF 8 - Marker for terminal blocks

0818137

<https://www.phoenixcontact.com/in/products/0818137>



Marker for terminal blocks, Sheet, white, unlabeled, can be labeled with: BLUEMARK ID COLOR, BLUEMARK ID, BLUEMARK CLED, PLOTMARK, CMS-P1-PLOTTER, mounting type: snapped, for terminal block width: 8.2 mm, lettering field size: 7.6 x 5.1 mm, Number of individual labels: 56

# XTV 6-QUATTRO - Feed-through terminal block

1329511

<https://www.phoenixcontact.com/in/products/1329511>



## UC-TMF 8 CUS - Marker for terminal blocks

0824654

<https://www.phoenixcontact.com/in/products/0824654>



Marker for terminal blocks, can be ordered: by sheet, white, labeled according to customer specifications, mounting type: snap into flat marker groove, for terminal block width: 8.2 mm, lettering field size: 7.6 x 5.1 mm, Number of individual labels: 56

---

## UCT-TMF 8 - Marker for terminal blocks

0828748

<https://www.phoenixcontact.com/in/products/0828748>



Marker for terminal blocks, Sheet, white, unlabeled, can be labeled with: TOPMARK NEO, TOPMARK LASER, BLUEMARK ID COLOR, BLUEMARK ID, BLUEMARK CLED, THERMOMARK PRIME, THERMOMARK CARD 2.0, THERMOMARK CARD, mounting type: snapped, for terminal block width: 8.2 mm, lettering field size: 7.4 x 4.7 mm, Number of individual labels: 42

# XTV 6-QUATTRO - Feed-through terminal block

1329511

<https://www.phoenixcontact.com/in/products/1329511>



## UCT-TMF 8 CUS - Marker for terminal blocks

0829672

<https://www.phoenixcontact.com/in/products/0829672>



Marker for terminal blocks, can be ordered: by sheet, white, labeled according to customer specifications, mounting type: snap into flat marker groove, for terminal block width: 8.2 mm, lettering field size: 7.4 x 4.7 mm, Number of individual labels: 42

---

## MPS-MT - Test plugs

0201744

<https://www.phoenixcontact.com/in/products/0201744>



Test plugs, with solder connection up to 1 mm<sup>2</sup> conductor cross section, number of positions: 1, color: gray

# XTV 6-QUATTRO - Feed-through terminal block

1329511

<https://www.phoenixcontact.com/in/products/1329511>

## MPS-IH WH - Insulating sleeve

0201663

<https://www.phoenixcontact.com/in/products/0201663>

Insulating sleeve, color: white



## MPS-IH RD - Insulating sleeve

0201676

<https://www.phoenixcontact.com/in/products/0201676>

Insulating sleeve, color: red



# XTV 6-QUATTRO - Feed-through terminal block

1329511

<https://www.phoenixcontact.com/in/products/1329511>

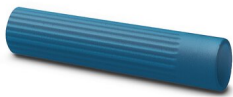


## MPS-IH BU - Insulating sleeve

0201689

<https://www.phoenixcontact.com/in/products/0201689>

Insulating sleeve, color: blue



---

## MPS-IH YE - Insulating sleeve

0201692

<https://www.phoenixcontact.com/in/products/0201692>

Insulating sleeve, color: yellow





# XTV 6-QUATTRO - Feed-through terminal block

1329511

<https://www.phoenixcontact.com/in/products/1329511>

## MPS-IH GN - Insulating sleeve

0201702

<https://www.phoenixcontact.com/in/products/0201702>

Insulating sleeve, color: green



---

## MPS-IH GY - Insulating sleeve

0201728

<https://www.phoenixcontact.com/in/products/0201728>

Insulating sleeve, color: gray



# XTV 6-QUATTRO - Feed-through terminal block

1329511

<https://www.phoenixcontact.com/in/products/1329511>



## MPS-IH BK - Insulating sleeve

0201731

<https://www.phoenixcontact.com/in/products/0201731>

Insulating sleeve, color: black



---

## PAI-4-FIX BU - Test adapter

3032729

<https://www.phoenixcontact.com/in/products/3032729>



Test adapter, Touch proof against unintentional direct contact according to DIN EN 50274 when plugged in, for 4 mm test plug and terminal blocks with 8.2 mm pitch, number of positions: 1, color: blue

# XTV 6-QUATTRO - Feed-through terminal block



1329511

<https://www.phoenixcontact.com/in/products/1329511>

## PAI-4-FIX OG - Test adapter

3034455

<https://www.phoenixcontact.com/in/products/3034455>



4 mm test adapter, for terminal blocks with 8.2 mm pitch

---

## PAI-4-FIX YE - Test adapter

3032745

<https://www.phoenixcontact.com/in/products/3032745>



Test adapter, Touch proof against unintentional direct contact according to DIN EN 50274 when plugged in, for 4 mm test plug and terminal blocks with 8.2 mm pitch, number of positions: 1, color: yellow

# XTV 6-QUATTRO - Feed-through terminal block



1329511

<https://www.phoenixcontact.com/in/products/1329511>

## PAI-4-FIX RD - Test adapter

3032732

<https://www.phoenixcontact.com/in/products/3032732>



Test adapter, Touch proof against unintentional direct contact according to DIN EN 50274 when plugged in, for 4 mm test plug and terminal blocks with 8.2 mm pitch, number of positions: 1, color: red

---

## PAI-4-FIX GN - Test adapter

3032758

<https://www.phoenixcontact.com/in/products/3032758>



Test adapter, Touch proof against unintentional direct contact according to DIN EN 50274 when plugged in, for 4 mm test plug and terminal blocks with 8.2 mm pitch, number of positions: 1, color: green

# XTV 6-QUATTRO - Feed-through terminal block



1329511

<https://www.phoenixcontact.com/in/products/1329511>

## PAI-4-FIX BK - Test adapter

3032774

<https://www.phoenixcontact.com/in/products/3032774>



Test adapter, Touch proof against unintentional direct contact according to DIN EN 50274 when plugged in, for 4 mm test plug and terminal blocks with 8.2 mm pitch, number of positions: 1, color: black

---

## PAI-4-FIX GY - Test adapter

3032790

<https://www.phoenixcontact.com/in/products/3032790>



Test adapter, Touch proof against unintentional direct contact according to DIN EN 50274 when plugged in, for 4 mm test plug and terminal blocks with 8.2 mm pitch, number of positions: 1, color: gray

# XTV 6-QUATTRO - Feed-through terminal block



1329511

<https://www.phoenixcontact.com/in/products/1329511>

## PAI-4-FIX VT - Test adapter

3032761

<https://www.phoenixcontact.com/in/products/3032761>



Test adapter, Touch proof against unintentional direct contact according to DIN EN 50274 when plugged in, for 4 mm test plug and terminal blocks with 4.2 mm .. 8.2 mm pitch, number of positions: 1, color: violet

---

## PAI-4-FIX BN - Test adapter

3032787

<https://www.phoenixcontact.com/in/products/3032787>



Test adapter, Touch proof against unintentional direct contact according to DIN EN 50274 when plugged in, for 4 mm test plug and terminal blocks with 8.2 mm pitch, number of positions: 1, color: brown

# XTV 6-QUATTRO - Feed-through terminal block

1329511

<https://www.phoenixcontact.com/in/products/1329511>



## PAI-4-FIX WH - Test adapter

3032797

<https://www.phoenixcontact.com/in/products/3032797>



4 mm test adapter, for terminal blocks with 8.2 mm pitch

---

## PAIS-4-FIX GY - Test adapter

3032791

<https://www.phoenixcontact.com/in/products/3032791>



Test adapter, Touch proof against unintentional direct contact according to DIN EN 50274 when plugged in, for 4 mm test plug and terminal blocks with 5.2 mm, 6.2 mm, and 8.2 mm pitch, number of positions: 1, color: gray

# XTV 6-QUATTRO - Feed-through terminal block



1329511

<https://www.phoenixcontact.com/in/products/1329511>

## PAIS-4-FIX BK - Test adapter

3032792

<https://www.phoenixcontact.com/in/products/3032792>



Test adapter, Touch proof against unintentional direct contact according to DIN EN 50274 when plugged in, for 4 mm test plug and terminal blocks with 5.2 mm, 6.2 mm, and 8.2 mm pitch, number of positions: 1, color: black

---

## PAIS-4-FIX RD - Test adapter

3032793

<https://www.phoenixcontact.com/in/products/3032793>



Test adapter, Do not plug in while the power is connected, for 4 mm test plug and terminal blocks with 5.2 mm, 6.2 mm, and 8.2 mm pitch, number of positions: 1, color: red



# XTV 6-QUATTRO - Feed-through terminal block



1329511

<https://www.phoenixcontact.com/in/products/1329511>

## PAIS-4-FIX BU - Test adapter

3032798

<https://www.phoenixcontact.com/in/products/3032798>



Test adapter, Touch proof against unintentional direct contact according to DIN EN 50274 when plugged in, for 4 mm test plug and terminal blocks with 5.2 mm, 6.2 mm, and 8.2 mm pitch, number of positions: 1, color: blue

---

## PAIS-4-FIX YE - Test adapter

3032799

<https://www.phoenixcontact.com/in/products/3032799>



Test adapter, Touch proof against unintentional direct contact according to DIN EN 50274 when plugged in, for 4 mm test plug and terminal blocks with 5.2 mm, 6.2 mm, and 8.2 mm pitch, number of positions: 1, color: yellow

# XTV 6-QUATTRO - Feed-through terminal block



1329511

<https://www.phoenixcontact.com/in/products/1329511>

## PAIS-4-FIX GN - Test adapter

3032801

<https://www.phoenixcontact.com/in/products/3032801>



Test adapter, Touch proof against unintentional direct contact according to DIN EN 50274 when plugged in, for 4 mm test plug and terminal blocks with 5.2 mm, 6.2 mm, and 8.2 mm pitch, number of positions: 1, color: green

---

## PAIS-4-FIX VT - Test adapter

3032802

<https://www.phoenixcontact.com/in/products/3032802>



Test adapter, Touch proof against unintentional direct contact according to DIN EN 50274 when plugged in, for 4 mm test plug and terminal blocks with 5.2 mm, 6.2 mm, and 8.2 mm pitch, number of positions: 1, color: violet

# XTV 6-QUATTRO - Feed-through terminal block

1329511

<https://www.phoenixcontact.com/in/products/1329511>



## PS-8 - Test plugs

3031005

<https://www.phoenixcontact.com/in/products/3031005>



Test plugs, Modular test plug, number of positions: 1, color: red

---

## DP PS-8 - Spacer plate

3036741

<https://www.phoenixcontact.com/in/products/3036741>



Spacer plate, length: 22.4 mm, width: 8.2 mm, height: 29 mm, number of positions: 1, color: red

# XTV 6-QUATTRO - Feed-through terminal block



1329511

<https://www.phoenixcontact.com/in/products/1329511>

## PS-8/2,3MM RD - Test plugs

3048564

<https://www.phoenixcontact.com/in/products/3048564>

Test plugs, number of positions: 1, color: red



---

## PROJECT COMPLETE - Software

1050453

<https://www.phoenixcontact.com/in/products/1050453>



Intuitive planning and marking software for configuring terminal strips and for professional marking of marking materials for terminal blocks, conductors, cables, devices, and systems. The software is available for download

# XTV 6-QUATTRO - Feed-through terminal block



1329511

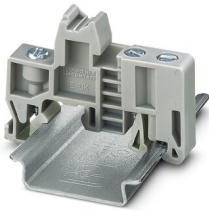
<https://www.phoenixcontact.com/in/products/1329511>

## E/UK - End clamp

1201442

<https://www.phoenixcontact.com/in/products/1201442>

End clamp, material: PA, color: gray, Mounting on a DIN rail NS 32 or NS 35



---

## E/UK 1 - End clamp

1201413

<https://www.phoenixcontact.com/in/products/1201413>

End clamps, for supporting the ends of double-level and three-level terminal blocks, width: 10 mm, color: gray



# XTV 6-QUATTRO - Feed-through terminal block



1329511

<https://www.phoenixcontact.com/in/products/1329511>

## TMT (EX9,5)R - Marker for terminal blocks

0828295

<https://www.phoenixcontact.com/in/products/0828295>



Marker for terminal blocks, Roll, white, unlabeled, can be labeled with: THERMOMARK E.300 (D)/600 (D), THERMOMARK ROLL 2.0, THERMOMARK ROLL, THERMOMARK ROLL X1, THERMOMARK ROLLMASTER 300/600, THERMOMARK X1.2, mounting type: snapped, snap into tall marker groove, for terminal block width: 30000 mm, lettering field size: 9.5 x 50000 mm, Number of individual labels: 1

---

## US-TM 100 - Marker for terminal blocks

0829255

<https://www.phoenixcontact.com/in/products/0829255>



Marker for terminal blocks, Card, white, unlabeled, can be labeled with: BLUEMARK ID COLOR, BLUEMARK ID, THERMOMARK PRIME, THERMOMARK CARD 2.0, THERMOMARK CARD, mounting type: snapped, lettering field size: 104 x 9.8 mm, Number of individual labels: 13

# XTV 6-QUATTRO - Feed-through terminal block



1329511

<https://www.phoenixcontact.com/in/products/1329511>

## CLIPFIX 35 - End clamp

3022218

<https://www.phoenixcontact.com/in/products/3022218>



Quick mounting end clamp for NS 35/7,5 DIN rail or NS 35/15 DIN rail, with marking option, width: 9.5 mm, color: gray

---

## CLIPFIX 35-5 - End clamp

3022276

<https://www.phoenixcontact.com/in/products/3022276>



Quick mounting end clamp for NS 35/7,5 DIN rail or NS 35/15 DIN rail, with marking option, with parking option for FBS...5, FBS...6, KSS 5, KSS 6, width: 5.15 mm, color: gray

# XTV 6-QUATTRO - Feed-through terminal block



1329511

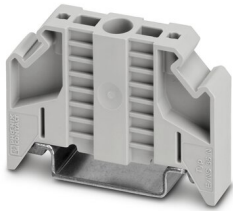
<https://www.phoenixcontact.com/in/products/1329511>

## E/NS 35 N - End clamp

0800886

<https://www.phoenixcontact.com/in/products/0800886>

End clamp, width: 9.5 mm, color: gray



---

Phoenix Contact 2023 © - all rights reserved

<https://www.phoenixcontact.com>

PHOENIX CONTACT (I) Pvt. Ltd.

A-58/2, Okhla Industrial Area, Phase - II, New Delhi-110 020

+91.1275.71420

[info@phoenixcontact.co.in](mailto:info@phoenixcontact.co.in)