



## RP20 max Antennas

### Multi-Port MIMO Fixed Wireless Access Omnidirectional Antennas

RP20 max (L000320-XX) antennas are 5G/Cellular 2x2 MIMO omnidirectional antennas for Fixed Wireless Access (FWA) and IoT applications.

There are 2 and 3 port variants available with the 3-port models including GNSS coverage. Each model covers 617 - 6000 MHz and supports all major global 5G Cellular bands. These antennas can be mounted on a mast (pole), or wall and are suitable for both outdoor and indoor applications.

### FEATURES AND BENEFITS

- Global LTE and 5G coverage (617-6000MHz)
- Operates in both CBRS as well as unlicensed 5-6 GHz
- Consistent omnidirectional patterns across all bands, providing stable reception
- Integrated pigtails with a choice of terminated connectors
- Supplied with brackets and mounting hardware

### APPLICATIONS

- Outdoor and indoor
- Fixed Wireless Access (FWA)
- Failover support
- Industrial IoT device connections
- Private networks

#### ELECTRICAL SPECIFICATION

Part Numbers	L000320-01 / L000320-02 / L000320-03 / L000320-04			
Operating Frequency (MHz)	617-960	1427-2700	3300-4800	4900-6000
VSWR - Average	<2.5:1	<2.0:1	<2.0:1	<2.5:1
Peak Gain - Max (dBi)	3.0	5.6	4.0	4.6
Efficiency (%) Avg.	78	78	63	63
Input Max Power (W)	10			
Polarization	Linear, Vertical			
Azimuth Beamwidth (All Models)	360 °, Omnidirectional			
Nominal Impedance (Ohms)	50			

## ELECTRICAL SPECIFICATION - GNSS\*

Frequency	1559-1610
Passive Antenna Gain (dBic)	5.0
Active Antenna Gain (dBic)	32
LNA Gain (dB)	28 ± 3
Noise Figure @ room temp. (dB)	< 2.5
Polarization	RHCP
Nominal Impedance (ohm)	50
Operating Supply Voltage (Vdc)	2.5-7.0
Current Consumption, Max @ room temp. (mA)	8.5 ± 3 @ 3.0V
Out-of-band Signal Rejection, Min @ room temp. (dBc)	>80

\* GNSS available on models L000320-02 & L000320-04

## MECHANICAL SPECIFICATION

Dimensions - height x circumference - mm (in.)	554 x 74Ø (21.8 x 2.9)
Weight - g (oz.) - Dependent on Model	512-997(18-35)
Radome	Polycarbonate, UV (White)
Cable	LMR 195 Equivalent
Cap and Base	ASA, UV

## ENVIRONMENTAL SPECIFICATION

Operating Temperature - °C (°F)	-40 to +85°C (-40 to +185°F)
Storage Temperature - °C (°F)	-40 to +85°C (-40 to +185°F)
Ingress Protection (IP Rating)	IP67
Material Substance Compliance	RoHS Compliant CE & UKCA
Wind Rating - Survival (mph)	110

## PART NUMBER CONFIGURATIONS

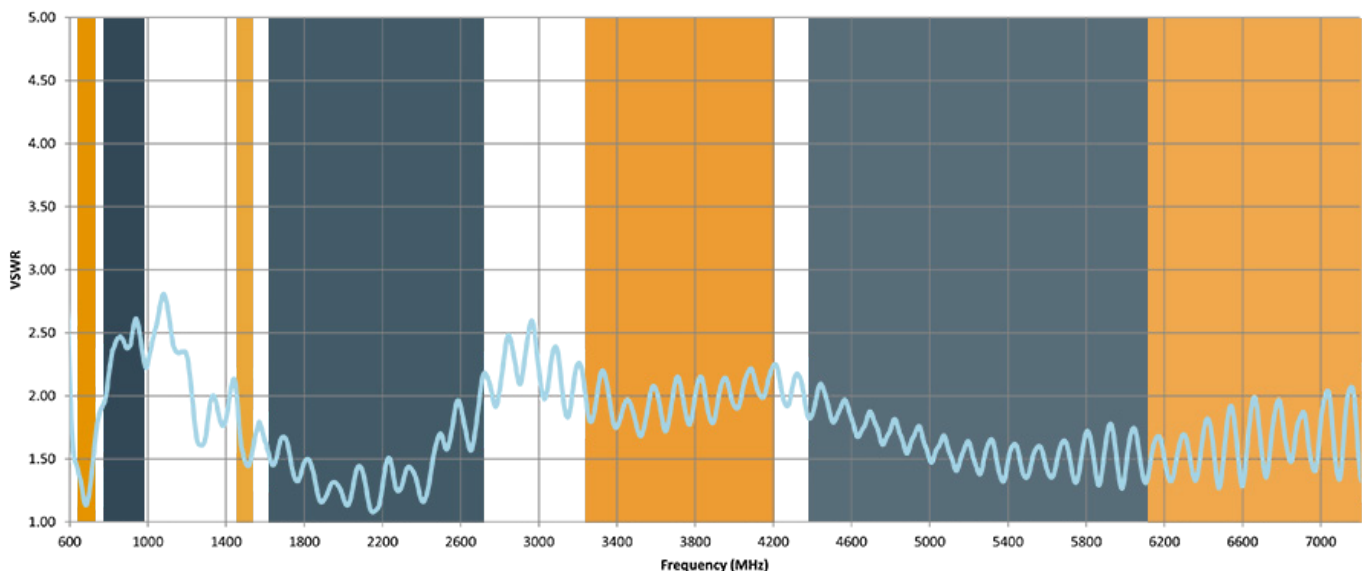
PART NUMBER	PIGTAIL CONNECTOR	PIGTAIL LENGTH	NUMBER PORTS	FREQUENCY
L000320-01	SMA Male	500cm (16ft)	2 x Cellular	617-6000 MHz
L000320-02	SMA Male	500cm (16ft)	2 x Cellular 1 x GNSS	617-6000 MHz
L000320-03	Type N (Female)	50cm (1.6ft)	2 x Cellular	617-6000 MHz
L000320-04	Type N (Female)	50cm (1.6ft)	2 x Cellular 1 x GNSS	617-6000 MHz

## GLOBAL 4G/5G CELLULAR COVERAGE

The **RP20 max** antenna provides global cellular coverage. The table below shows the frequencies and bands covered and the corresponding performance across those bands is shown in the charts below.

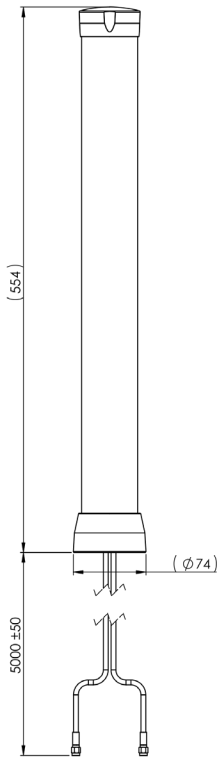
FREQUENCY	RF BANDS COVERED
617-698 MHz	71
698-960 MHz	5, 6, 8, 12, 13, 14, 17, 18, 19, 20, 26, 27, 28, 29, 44, 67, 68, 85 N5, N8, N12, N14, N18, N20, N28, N29, N81, N82, N83, N89, N91, N92, N93, N94
1427-1511 MHz	11, 21, 32, 45, 74 N50, N51, N74, N75, N76
1690-2700 MHz	1, 2, 3, 4, 7, 9, 10, 15, 16, 23, 25, 30, 33, 34, 35, 36, 37, 38, 39, 40, 41, 65, 66, 69, 70 N30, N34, N38, N39, N40, N41, N65, N66, N70, N80, N84, N86, N90, N95
3300-4200 MHz	22, 42, 43, 48 N48, N77, N78
4400-6000 MHz	N79
6000-7125 MHz*	46, 47 N96, N102, N104

## TYPICAL VSWR

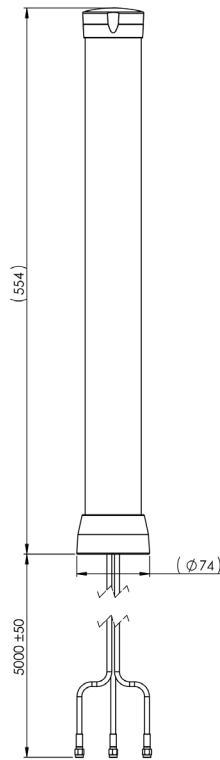


# MECHANICAL DRAWINGS

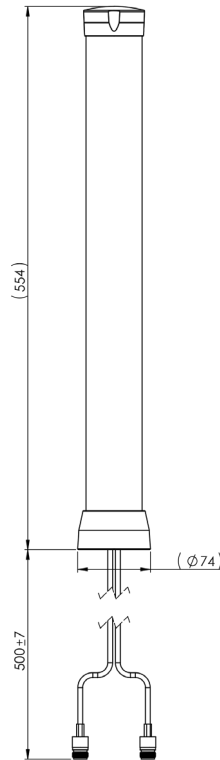
L000320-01



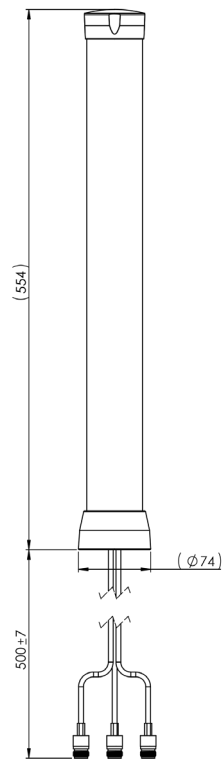
L000320-02



L000320-03

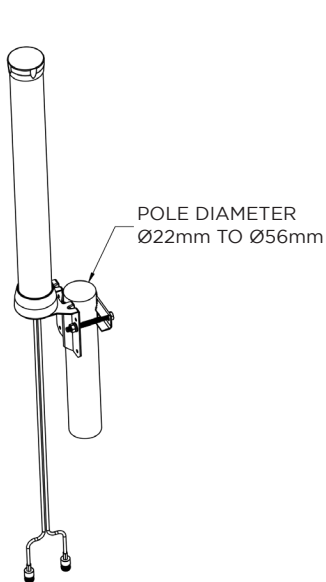


L000320-04

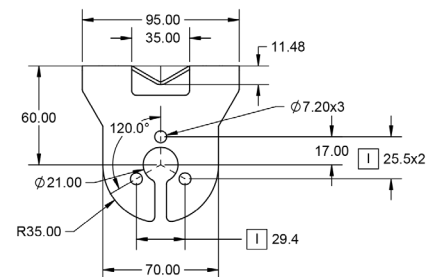
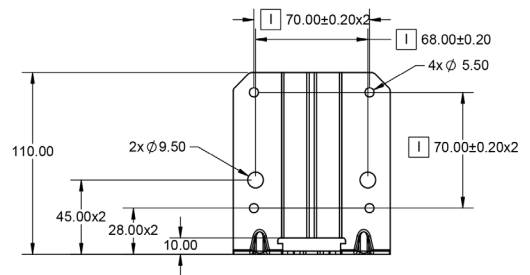
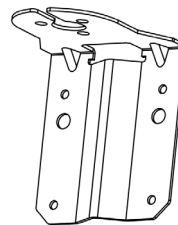
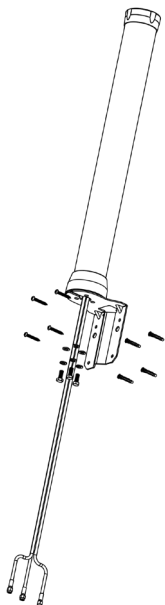


# MOUNTING OPTIONS WITH INCLUDED HARDWARE

Pole Mounting Bracket



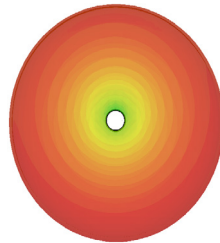
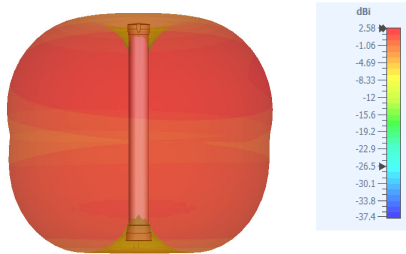
Wall Mounting Bracket



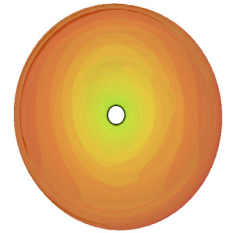
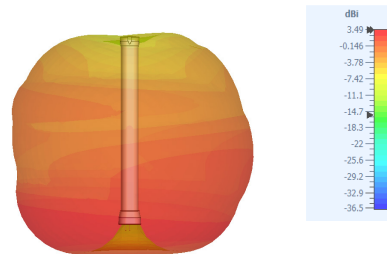
## RADIATION PATTERNS

The radiation patterns below are representative of all models (2 and 3 port variants). For more detailed information and data please contact us.

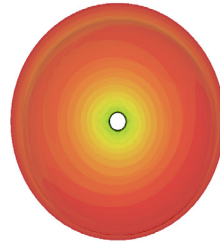
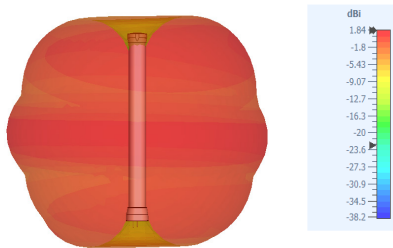
### Radiation Patterns at 617 MHz



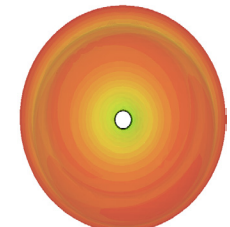
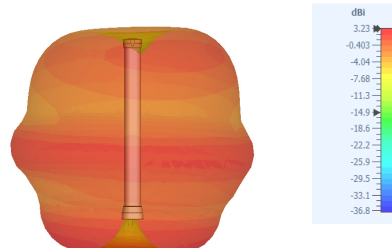
### Radiation Patterns at 698 MHz



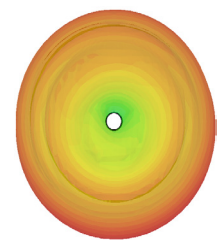
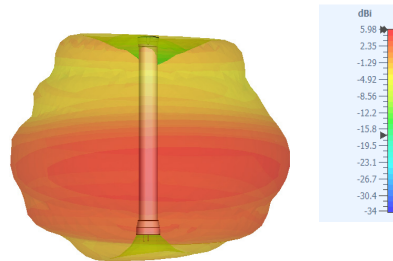
### Radiation Patterns at 850 MHz



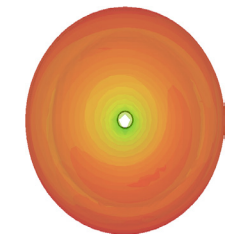
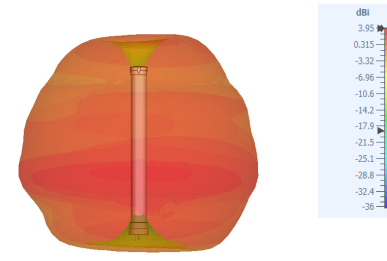
### Radiation Patterns at 960 MHz



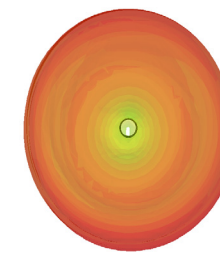
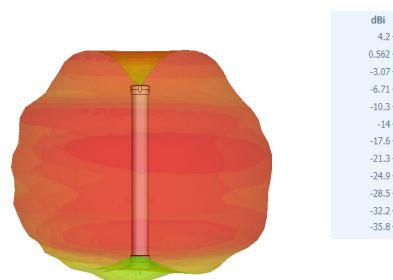
### Radiation Patterns at 1500 MHz



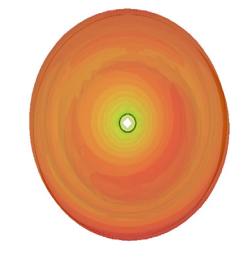
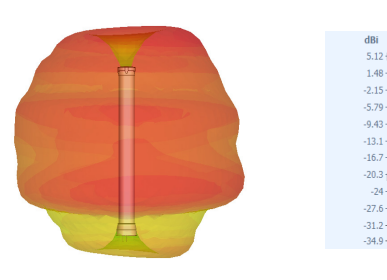
### Radiation Patterns at 1700 MHz



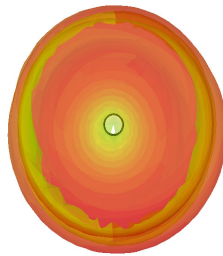
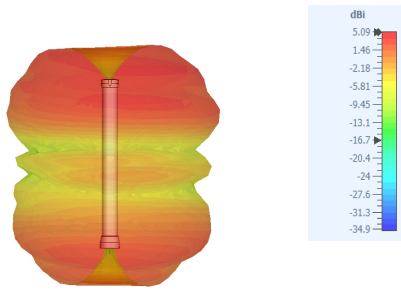
### Radiation Patterns at 1850 MHz



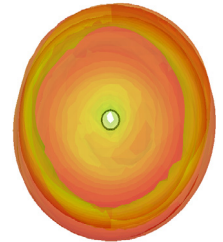
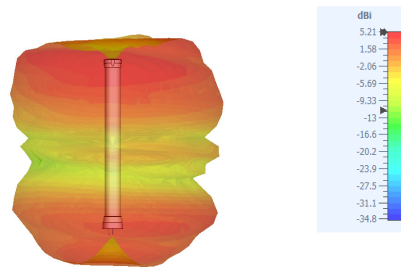
### Radiation Patterns at 2000 MHz



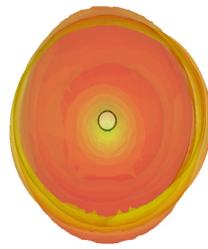
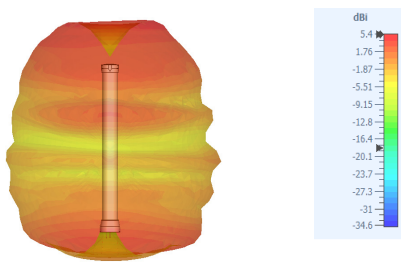
### Radiation Patterns at 2500 MHz



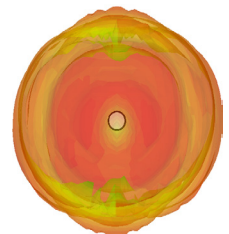
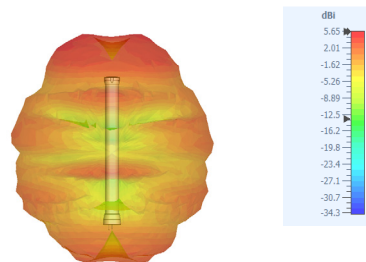
### Radiation Patterns at 2700 MHz



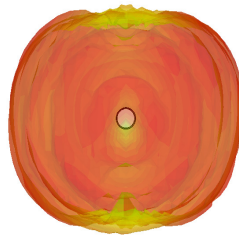
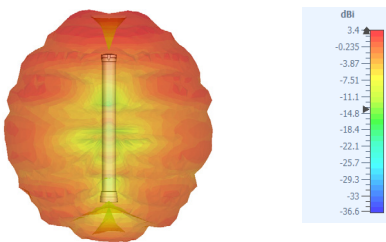
### Radiation Patterns at 3500 MHz



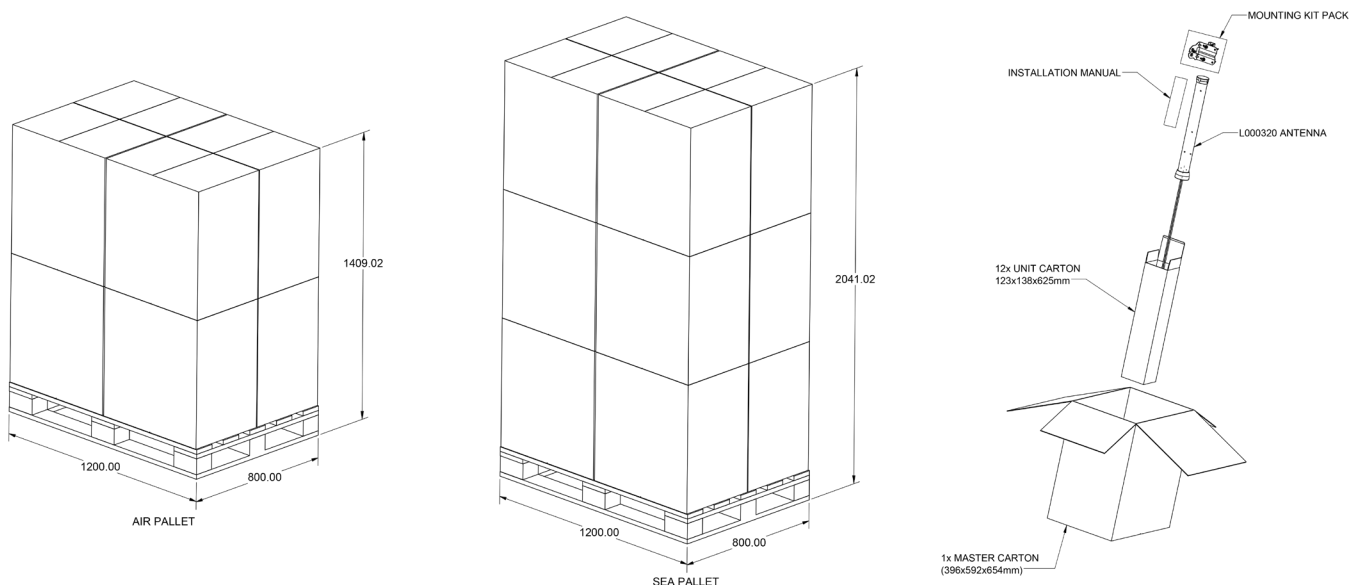
### Radiation Patterns at 4900 MHz



### Radiation Patterns at 6000 MHz



## PACKING INFORMATION



PACKAGED DIMENSIONS	MASTER CARTON	AIR PALLET	OCEAN PALLET
Number of Antennas	12	96	144
Height cm(in)	65.4 (25.8)	140.9 (55.5)	204.1 (80.4)
Length cm(in)	39.6 (15.6)	120 (47.2)	120 (47.2)
Width cm(in)	59.2 (23.4)	80 (31.5)	80 (31.5)
Est. Shipping Weight kg (lbs.)*	23.5 (51.9)	200 (441)	294 (648.2)

\* Including mounting hardware

### TE TECHNICAL SUPPORT CENTER

USA:	+1 (800) 522-6752
Canada:	+1 (905) 475-6222
Mexico:	+52 (0) 55-1106-0800
Latin/S. America:	+54 (0) 11-4733-2200
Germany:	+49 (0) 6251-133-1999
UK:	+44 (0) 800-267666
France:	+33 (0) 1-3420-8686
Netherlands:	+31 (0) 73-6246-999
China:	+86 (0) 400-820-6015

### te.com

TE, and TE connectivity (logo) are trademarks owned or licensed by the TE Connectivity Ltd. family of companies. All other logos, products and/or company names referred to herein might be trademarks of their respective owners.

The information given herein, including drawings, illustrations and schematics which are intended for illustration purposes only, is believed to be reliable. However, TE Connectivity makes no warranties as to its accuracy or completeness and disclaims any liability in connection with its use. TE Connectivity's obligations shall only be as set forth in TE Connectivity's Standard Terms and Conditions of Sale for this product and in no case will TE Connectivity be liable for any incidental, indirect or consequential damages arising out of the sale, resale, use or misuse of the product. Users of TE Connectivity products should make their own evaluation to determine the suitability of each such product for the specific application.

TE Connectivity warrants to the original end user customer of its products that its products are free from defects in material and workmanship. Subject to conditions and limitations TE Connectivity will, at its option, either repair or replace any part of its products that prove defective because of improper workmanship or materials. This limited warranty is in force for the useful lifetime of the original end product into which the TE Connectivity product is installed. Useful lifetime of the original end product may vary but is not to exceed one (1) year from the original date of the end product purchase.

©2023 TE Connectivity. All Rights Reserved.

02/23 Original