
cDAQ-9189

2023-08-02



Contents

cDAQ-9189 Specifications..... 3

cDAQ-9189 Specifications

Definitions

Warranted specifications describe the performance of a model under stated operating conditions and are covered by the model warranty.

Characteristics describe values that are relevant to the use of the model under stated operating conditions but are not covered by the model warranty.

- **Typical** specifications describe the expected performance met by a majority of the models.
- **Nominal** specifications describe parameters and attributes that may be useful in operation.

Conditions

Specifications are valid at 25 °C unless otherwise noted.

Analog Input

Input FIFO size	127 samples per slot
Maximum sample rate	Determined by the C Series module or modules
Timing accuracy	50 ppm of sample rate
Internal base clocks	80 MHz, 20 MHz, 13.1072 MHz, 12.8 MHz, 10 MHz, 100 kHz
Number of channels supported	Determined by the C Series module or modules

Analog Output

Number of channels supported	
Hardware-timed task	
Onboard regeneration	16
Non-regeneration	Determined by the C Series module or modules
Non-hardware-timed task	Determined by the C Series module or modules
Maximum update rate	
Onboard regeneration	1.6 MS/s (multi-channel, aggregate)
Non-regeneration	Determined by the C Series module or modules
Timing accuracy	50 ppm of sample rate
Internal base clocks	80 MHz, 20 MHz, 13.1072 MHz, 12.8 MHz, 10 MHz, 100 kHz
Output FIFO size	
Onboard regeneration	8,191 samples shared among channels used
Non-regeneration	127 samples per slot
AO waveform modes	Non-periodic waveform, periodic waveform regeneration mode from onboard memory, periodic waveform regeneration from host buffer including dynamic update

Digital Waveform Characteristics

Waveform acquisition (DI) FIFO	
Parallel modules	511 samples per slot
Serial modules	63 samples per slot
Waveform generation (DO) FIFO	
Parallel modules	
Slots 1 to 4	2,047 samples per slot
Slots 5 to 8	1,023 samples per slot
Serial modules	63 samples per slot



Note When parallel modules in a digital task are in slots 1 through 4, FIFO is 2,047 samples per slot for all slots. When any parallel module in a digital task is in slots 5 through 8, FIFO is 1,023 samples per slot for all eight slots.

Digital input sample clock frequency	
Streaming to application memory	System-dependent
Finite	0 MHz to 10 MHz
Digital output sample clock frequency	
Streaming from application memory	System-dependent
Regeneration from FIFO	0 MHz to 10 MHz
Finite	0 MHz to 10 MHz

Timing accuracy	50 ppm
Internal base clocks	80 MHz, 20 MHz, 13.1072 MHz, 12.8 MHz, 10 MHz, 100 kHz

General-Purpose Counters/Timers

Number of counters/timers	4
Resolution	32 bits
Counter measurements	Edge counting, pulse, semi-period, period, two-edge separation, pulse width
Position measurements	X1, X2, X4 quadrature encoding with Channel Z reloading; two-pulse encoding
Output applications	Pulse, pulse train with dynamic updates, frequency division, equivalent time sampling
Internal base clocks	80 MHz, 20 MHz, 13.1072 MHz, 12.8 MHz, 10 MHz, 100 kHz
External base clock frequency	0 MHz to 20 MHz
Base clock accuracy	50 ppm
Output frequency	0 MHz to 20 MHz
Inputs	Gate, Source, HW_Arm, Aux, A, B, Z, Up_Down
Routing options for inputs	Any module PFI, chassis PFI, analog trigger, many internal signals

FIFO	Dedicated 127-sample FIFO
------	---------------------------

Frequency Generator

Number of channels	1
Base clocks	20 MHz, 10 MHz, 100 kHz
Divisors	1 to 16 (integers)
Base clock accuracy	50 ppm
Output	Any chassis PFI or module PFI terminal

Module PFI Characteristics

Functionality	Static digital input, static digital output, timing input, and timing output
Timing output sources	Many analog input, analog output, counter, digital input, and digital output timing signals
Timing input frequency	0 MHz to 20 MHz
Timing output frequency	0 MHz to 20 MHz

Chassis PFI Characteristics

Maximum input or output frequency	1 MHz
Cable length	3 m (10 ft)

Cable impedance	50 Ω
PFI 0 connector	SMB
Power-on state	High impedance

Table 1. Input/Output Voltage Protection

Voltage	Minimum	Maximum
Input	-20 V	25 V
Output	-15 V	20 V
Maximum operating conditions		
I_{OL} output low current	8 mA maximum	
I_{OH} output high current	-8 mA maximum	

Table 2. DC Input Characteristics

Voltage	Minimum	Maximum
Positive going threshold	1.43 V	2.28 V
Negative going threshold	0.86 V	1.53 V
Hysteresis	0.48 V	0.87 V

Table 3. DC Output Characteristics

Voltage	Conditions	Minimum	Maximum
High	—	—	5.25 V
	Sourcing 100 μ A	4.65 V	—
	Sourcing 2 mA	3.60 V	—
	Sourcing 3.5 mA	3.44 V	—
Low	Sinking 100 μ A	—	0.10 V
	Sinking 2 mA	—	0.64 V
	Sinking 3.5 mA	—	0.80 V

Digital Triggers

Source	Any chassis PFI or module PFI terminal
Polarity	Software-selectable for most signals
Analog input function	Start Trigger, Reference Trigger, Pause Trigger, Sample Clock, Sample Clock Timebase
Analog output function	Start Trigger, Pause Trigger, Sample Clock, Sample Clock Timebase
Counter/timer function	Gate, Source, HW_Arm, Aux, A, B, Z, Up_Down

Module I/O States

At power-on	Module-dependent. Refer to the documentation for each C Series module.
-------------	--

Time-Based Triggers and Timestamps

Number of time-based triggers	5
Number of timestamps	4
Analog input	
Time-based triggers	Start Trigger, Sync Pulse
Timestamps	Start Trigger, Reference Trigger, First Sample
Analog output	

Time-based triggers	Start Trigger, Sync Pulse
Timestamps	Start Trigger, First Sample
Digital input	
Time-based triggers	Start Trigger
Timestamps	Start Trigger, Reference Trigger, First Sample
Digital output	
Time-based triggers	Start Trigger
Timestamps	Start Trigger, First Sample
Counter/timer input	
Time-based triggers	Arm Start Trigger
Timestamps	Arm Start Trigger
Counter/timer output	
Time-based triggers	Start Trigger, Arm Start Trigger
Timestamps	Start Trigger, Arm Start Trigger

Network Interface

Network protocols	TCP/IP, UDP
Network ports used	HTTP:80 (configuration only), TCP:3580; UDP:5353 (configuration only), TCP:5353 (configuration only); TCP:31415; UDP:7865 (configuration only), UDP:8473 (configuration only)

Network IP configuration	DHCP + Link-Local, DHCP, Static, Link-Local
High-performance data streams	7
Data stream types available	Analog input, analog output, digital input, digital output, counter/timer input, counter/timer output, NI-XNET
Default MTU size	1500 bytes

Ethernet

Number of ports	2 ports, internally switched
Network interface	1000 Base-TX, full-duplex; 1000 Base-TX, half-duplex; 100 Base-TX, full-duplex; 100 Base-TX, half-duplex; 10 Base-T, full-duplex; 10 Base-T, half-duplex
Communication rates	10/100/1000 Mbps, auto-negotiated
Maximum cabling distance	100 m/segment
Maximum hops per line	15

Timing and Synchronization

Protocol	IEEE 802.1AS for network synchronization over 1000 Base-TX, full-duplex
Network synchronization accuracy	<1 μ s

Network synchronization accuracy with optimized configuration	<100 ns
---	---------

Power Requirements



Caution The protection provided by the cDAQ-9189 chassis can be impaired if it is used in a manner not described in the **cDAQ-9185/9189 User Manual**.



Note Some C Series modules have additional power requirements. For more information about C Series module power requirements, refer to the documentation for each C Series module.



Note Sleep mode for C Series modules is not supported in the cDAQ-9189.



Note When operating the cDAQ-9189 in hazardous locations, you must use the power connector with an external power supply rated for hazardous locations. The power supply included in the cDAQ-9189 kit is intended only for desktop use. For all other applications use the included 2-position power connector plug and a power supply rated for your application power requirements. Visit ni.com to find hazardous locations-certified power supplies.

Voltage input range	9 V to 30 V (measured at the cDAQ-9189 power connector)
Maximum power consumption	16 W



Note The maximum power consumption specification is based on a fully populated system running a high-stress application at elevated ambient

temperature and with all C Series modules consuming the maximum allowed power.

Power input connector	2 positions 3.5 mm pitch mini-combicon screw terminal with screw flanges, Sauro CTMH020F8-0N002
Power input mating connector	Sauro CTF020V8, Phoenix Contact 1714977, or equivalent

Physical Characteristics

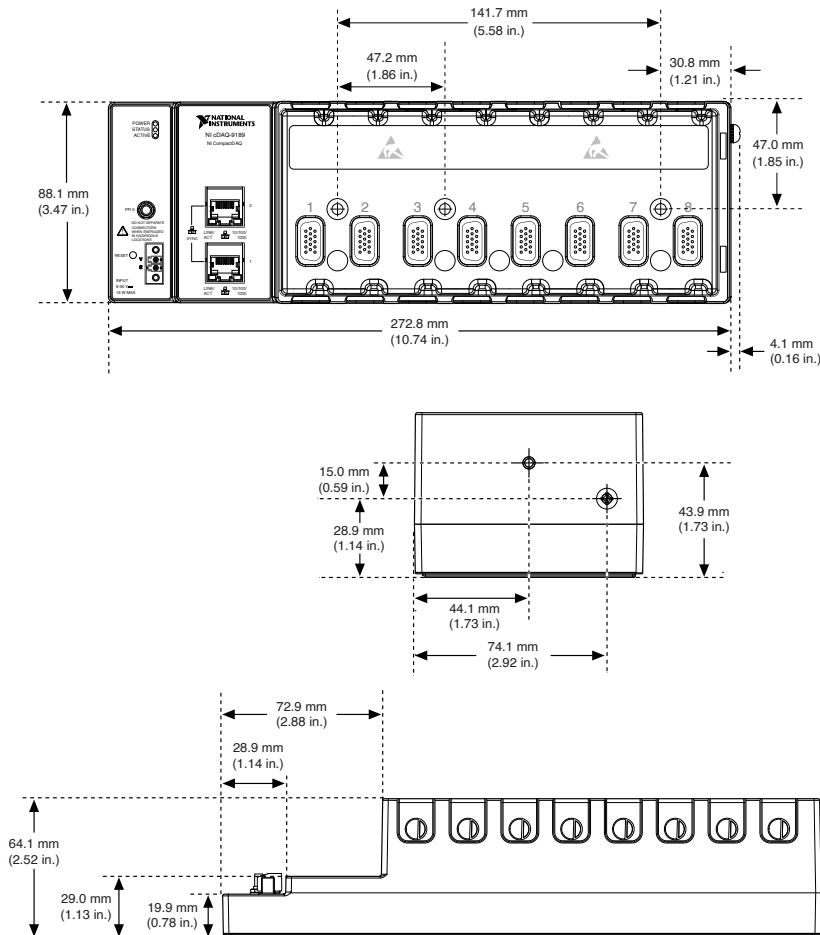
Weight (unloaded)	1065.9 g (37.6 oz)
Dimensions (unloaded)	272.8 mm × 88.1 mm × 62.3 mm (10.74 in. × 3.47 in. × 2.45 in.) Refer to the following figure.
Screw-terminal wiring	
Gauge	0.2 mm to 2.1 mm (24 AWG to 14 AWG) copper conductor wire
Wire strip length	6 mm (0.24 in.) of insulation stripped from the end
Temperature rating	85 °C
Torque for screw terminals	0.20 N · m to 0.25 N · m (1.8 lb · in. to 2.2 lb · in.)
Wires per screw terminal	One wire per screw terminal
Connector securement	
Securement type	Screw flanges provided

Torque for screw flanges

0.3 N · m to 0.4 N · m (2.7 lb · in. to 3.5 lb · in.)

If you need to clean the chassis, wipe it with a dry towel.

Figure 1. cDAQ-9189 Dimensions



Safety Voltages

Connect only voltages that are within these limits.

V terminal to C terminal

30 V maximum, Measurement Category I

Measurement Category I is for measurements performed on circuits not directly connected to the electrical distribution system referred to as MAINS voltage. MAINS

is a hazardous live electrical supply system that powers equipment. This category is for measurements of voltages from specially protected secondary circuits. Such voltage measurements include signal levels, special equipment, limited-energy parts of equipment, circuits powered by regulated low-voltage sources, and electronics.



Caution Do not connect the system to signals or use for measurements within Measurement Categories II, III, or IV.



Note Measurement Categories CAT I and CAT O (Other) are equivalent. These test and measurement circuits are not intended for direct connection to the MAINS building installations of Measurement Categories CAT II, CAT III, or CAT IV.

Environmental

Operating temperature (IEC 60068-2-1 and IEC 60068-2-2)	-40 °C to 70 °C
---	-----------------



Note Failure to follow the mounting instructions in the **cDAQ-9185/9189 User Manual** can cause temperature derating.

Storage temperature (IEC 60068-2-1 and IEC 60068-2-2)	-40 °C to 85 °C
Ingress protection	IP 40
Operating humidity (IEC 60068-2-56)	10% to 90% RH, noncondensing
Storage humidity (IEC 60068-2-56)	5% to 95% RH, noncondensing
Pollution Degree (IEC 60664)	2

Maximum altitude	5,000 m
------------------	---------

Indoor use only.

Hazardous Locations

U.S. (UL)	Class I, Division 2, Groups A, B, C, D, T4; Class I, Zone 2, AEx nA IIC T4 Gc
Canada (C-UL)	Class I, Division 2, Groups A, B, C, D, T4; Ex nA IIC T4 Gc
Europe (ATEX) and International (IECEX)	Ex nA IIC T4 Gc

Shock and Vibration

To meet these specifications, you must direct mount the cDAQ-9189 system and affix ferrules to the ends of the terminal lines.

Operating vibration	
Random (IEC 60068-2-64)	5 g RMS, 10 Hz to 500 Hz
Sinusoidal (IEC 60068-2-6)	5 g, 10 Hz to 500 Hz
Operating shock (IEC 60068-2-27)	30 g, 11 ms half sine, 50 g, 3 ms half sine, 18 shocks at 6 orientations

Safety and Hazardous Locations Standards

This product is designed to meet the requirements of the following electrical equipment safety standards for measurement, control, and laboratory use:

- IEC 61010-1, EN 61010-1
- UL 61010-1, CSA C22.2 No. 61010-1
- EN 60079-0:2012, EN 60079-15:2010
- IEC 60079-0: Ed 6, IEC 60079-15; Ed 4
- UL 60079-0; Ed 6, UL 60079-15; Ed 4
- CSA C22.2 No. 60079-0, CSA C22.2 No. 60079-15



Note For UL and other safety certifications, refer to the product label or the [Online Product Certification](#) section.

Electromagnetic Compatibility

This product meets the requirements of the following EMC standards for electrical equipment for measurement, control, and laboratory use:

- EN 61326-1 (IEC 61326-1): Class A emissions; Industrial immunity
- EN 55011 (CISPR 11): Group 1, Class A emissions
- EN 55022 (CISPR 22): Class A emissions
- EN 55024 (CISPR 24): Immunity
- AS/NZS CISPR 11: Group 1, Class A emissions
- AS/NZS CISPR 22: Class A emissions
- FCC 47 CFR Part 15B: Class A emissions
- ICES-001: Class A emissions



Note In the United States (per FCC 47 CFR), Class A equipment is intended for use in commercial, light-industrial, and heavy-industrial

locations. In Europe, Canada, Australia and New Zealand (per CISPR 11) Class A equipment is intended for use only in heavy-industrial locations.



Note Group 1 equipment (per CISPR 11) is any industrial, scientific, or medical equipment that does not intentionally generate radio frequency energy for the treatment of material or inspection/analysis purposes.



Note For EMC declarations and certifications, and additional information, refer to the [Online Product Certification](#) section.

CE Compliance

This product meets the essential requirements of applicable European Directives, as follows:

- 2014/35/EU; Low-Voltage Directive (safety)
- 2014/30/EU; Electromagnetic Compatibility Directive (EMC)
- 2014/34/EU; Potentially Explosive Atmospheres (ATEX)

Online Product Certification

Refer to the product Declaration of Conformity (DoC) for additional regulatory compliance information. To obtain product certifications and the DoC for this product, visit ni.com/certification, search by model number or product line, and click the appropriate link in the Certification column.

Environmental Management

NI is committed to designing and manufacturing products in an environmentally responsible manner. NI recognizes that eliminating certain hazardous substances from our products is beneficial to the environment and to NI customers.

For additional environmental information, refer to the **Minimize Our Environmental Impact** web page at ni.com/environment. This page contains the

environmental regulations and directives with which NI complies, as well as other environmental information not included in this document.

Waste Electrical and Electronic Equipment (WEEE)

EU Customers At the end of the product life cycle, all NI products must be disposed of according to local laws and regulations. For more information about how to recycle NI products in your region, visit ni.com/environment/weee.

电子信息产品污染控制管理办法（中国 RoHS）

中国客户 National Instruments 符合中国电子信息产品中限制使用某些有害物质指令(RoHS)。关于 National Instruments 中国 RoHS 合规性信息，请登录 ni.com/environment/rohs_china。(For information about China RoHS compliance, go to ni.com/environment/rohs_china.)