

Data Sheet | Item Number: 285-450

Jumper; insulated; gray

<https://www.wago.com/285-450>



Color: ■ gray

Electrical data

Ratings per IEC/EN

Rated current	150 A
---------------	-------

Physical data

Jumper assignment	1-2
-------------------	-----

Material data

Note (material data)	Information on material specifications can be found here
Color	gray
Fire load	0.09 MJ
Weight	25 g

Commercial data

Product Group	1 (Rail Mounted Terminal Blocks)
eCl@ss 10.0	27-14-11-40
eCl@ss 9.0	27-14-11-40
ETIM 8.0	EC000489
ETIM 7.0	EC000489
PU (SPU)	100 (25) pcs
Packaging type	Box
Country of origin	DE
GTIN	4045454549664
Customs tariff number	85366990990

Environmental Product Compliance

RoHS Compliance Status	Compliant, No Exemption
------------------------	-------------------------

Approvals / Certificates

General approvals **Approvals for hazardous areas**



Approval	Standard	Certificate Name
CSA DEKRA Certification B.V.	C22.2	154112
UL Underwriters Laboratories Inc.	UL 1059	E45172



Approval	Standard	Certificate Name
AEx Underwriters Laboratories Inc.	UL 60079	E185892 (AEx eb II C resp. Ex eb II C)

Downloads

Environmental Product Compliance

Compliance Search	
Environmental Product Compliance 285-450	↓

Documentation

Additional Information		
Technical Section	pdf 2142.18 KB	↓

Bid Text			
285-450	19.02.2019	xml 2.53 KB	↓
285-450	04.01.2018	doc 22.00 KB	↓

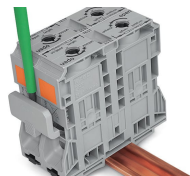
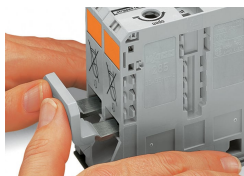
CAD/CAE-Data

CAD data	
2D/3D Models 285-450	↓

CAE data	
EPLAN Data Portal 285-450	↓
WSCAD Universe 285-450	↓
ZUKEN Portal 285-450	↓

Installation Notes

Commoning



Commoning with an adjacent jumper: insert the jumper above the conductor entry hole – prior to conductor termination. The nominal cross-section remains unchanged.

Removing jumper via operating tool.