



Data

Physical data

Width	10 mm / 0.394 inches
Height	4 mm / 0.157 inches

Subject to changes. Please also observe the further product documentation!

WAGO GmbH & Co. KG
Hansastr. 27
32423 Minden
Phone: +49571 887-0 | Fax: +49571 887-169
Email: info.de@wago.com | Web: www.wago.com

Do you have any questions about our products?
We are always happy to take your call at +49 (571) 887-44222.

Jumper assignment

1-2

Material Data

Note (material data)

Information on material specifications can be found here

Color	gray
Insulation material	Polyamide (PA66)
Fire load	0.006 MJ
Weight	1.1 g

Commercial data

eCl@ss 10.0	27-14-11-40
eCl@ss 9.0	27-14-11-40
ETIM 8.0	EC000489
ETIM 7.0	EC000489
PU (SPU)	200 (25) pcs
Packaging type	box
Country of origin	DE
GTIN	4044918683845
Customs tariff number	85366990990

Environmental Product Compliance

RoHS Compliance Status

Compliant, No Exemption

Optional accessories

Tool

Operating tool



Item no.: 280-432

Operating tool; made of insulating material; 2-way; white

www.wago.com/280-432

Downloads

Documentation

Bid Text

280-482	19 Feb 2019	xml	Download
X81 - Datei		2.6 kB	

Subject to changes. Please also observe the further product documentation!

WAGO GmbH & Co. KG

Hansastr. 27

32423 Minden

Phone: +49571 887-0 | Fax: +49571 887-169

Email: info.de@wago.com | Web: www.wago.com

Do you have any questions about our products?

We are always happy to take your call at +49 (571) 887-44222.



280-482 doc - Datei	27 Apr 2017	doc 24.1 kB	Download
------------------------	-------------	----------------	----------

Additional Information

		pdf 2.2 MB	Download
--	--	---------------	----------

CAD/CAE-Data

CAD data

2D/3D Models 280-482		URL	Download
----------------------	--	-----	----------

CAE data

WSCAD Universe 280-482		URL	Download
------------------------	--	-----	----------

ZUKEN Portal 280-482		URL	Download
----------------------	--	-----	----------

EPLAN Data Portal 280-482		URL	Download
---------------------------	--	-----	----------

Environmental Product Compliance

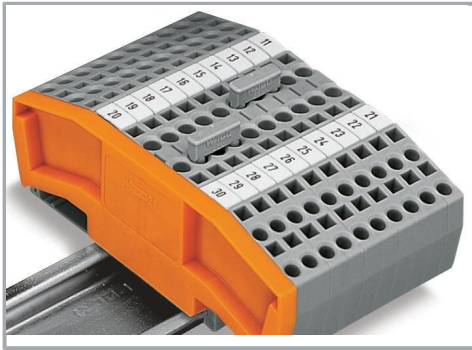
Compliance Search

Environmental Product Compliance 280-482 Jumper; 2-way; insulated; gray		URL	Download
--	--	-----	----------

Installation Notes

Commoning

Subject to changes. Please also observe the further product documentation!



Commoning using comb-style jumper bars.

Push comb-style jumper bars down until fully inserted.

Commoning

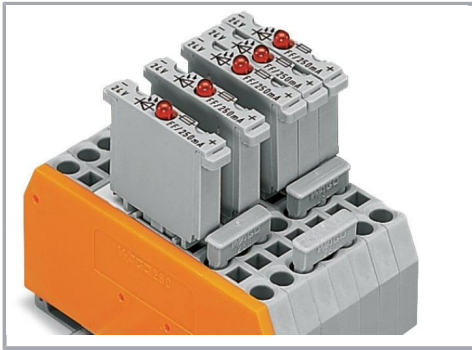


4-conductor through terminal blocks, angled type,

formation of groups with 3-way, comb-style jumper bars

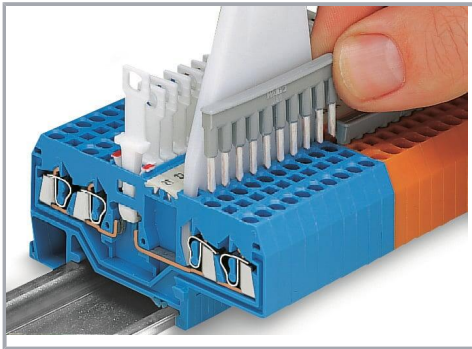
Commoning

Subject to changes. Please also observe the further product documentation!



Carrier terminal blocks with component plugs,
alternate comb-style jumper bars,
3-way comb-style jumper bar

Commoning



Commoning front-entry disconnect terminal
blocks via comb-style jumper bar using a 10-
pole operating tool

Product family

Classic

EPSITRON® CLASSIC POWER: The Robust Power Supply – with Integrated TopBoost (Optional)

[Show all products from the family](#)

Subject to changes. Please also observe the further product documentation!