

Data sheet Actuator.

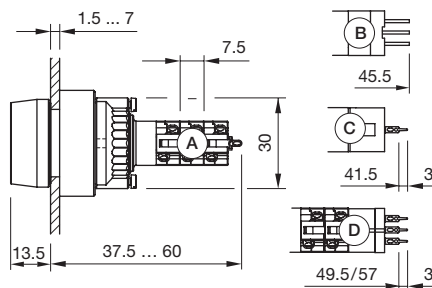
Part No.: 14-433.036

Technical data

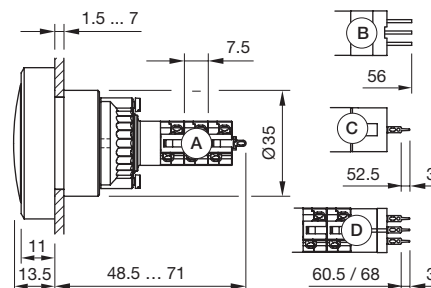


Terminal	Universal terminal, 2 x 0.5 mm
Operating Travel	3 mm
Lens illumination	illuminative
Housing colour	Black
Weight	0.015 kg
IP front protection	IP67, according to DIN EN 60529
Contact material	Gold
Switching action	Momentary
Switching system	Low-level element
Switching rating	42 V @ 0,1 A
Contacts	1 NC / 1 NO
Operating temperature	- 25 °C ... + 55 °C, mounted as a block, make sure the heat can escape freely
Operating force	3 N ... 4 N, depending on the number of switching elements
Mechanical lifetime	5 Mio. cycles of operation
Tightening torque	Fixing nut max. 0.25 Nm

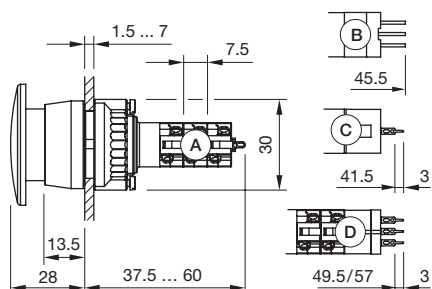
Dimension drawings



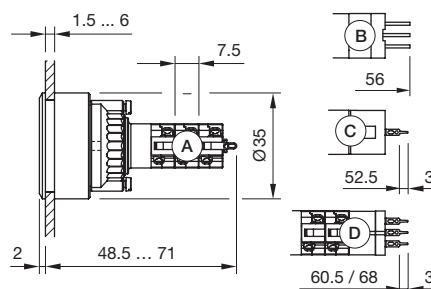
A = Solder terminal
 B = Plug-in terminal 2.8 x 0.5 mm
 C = Universal terminal 2.0 mm x 0.5 mm
 D = Universal-Solder terminal



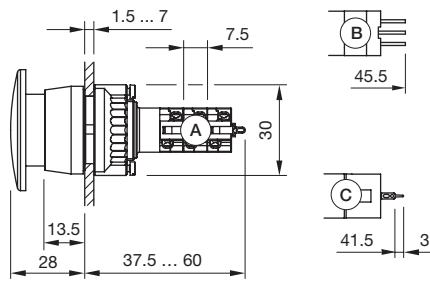
A = Solder terminal
 B = Plug-in terminal 2.8 x 0.5 mm
 C = Universal terminal 2.0 mm x 0.5 mm
 D = Universal-Solder terminal



A = Solder terminal
 B = Plug-in terminal 2.8 x 0.5 mm
 C = Universal terminal 2.0 mm x 0.5 mm
 D = Universal-Solder terminal

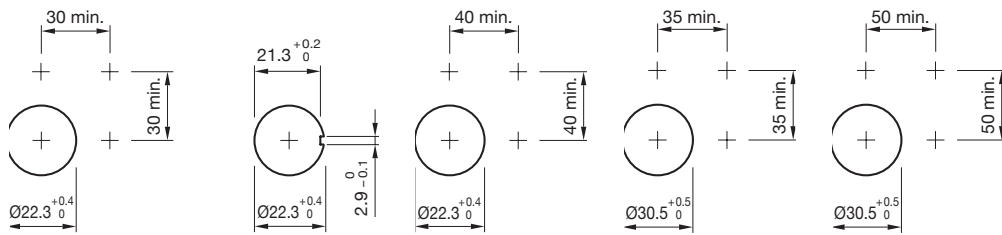


A = Solder terminal
 B = Plug-in terminal 2.8 x 0.5 mm
 C = Universal terminal 2.0 mm x 0.5 mm
 D = Universal-Solder terminal

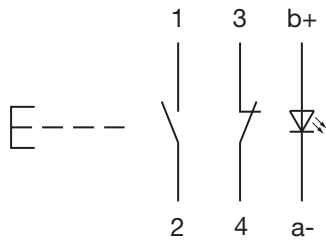


A = Solder terminal
 B = Plug-in terminal 2.8 x 0.5 mm
 C = Universal terminal 2.0 mm x 0.5 mm

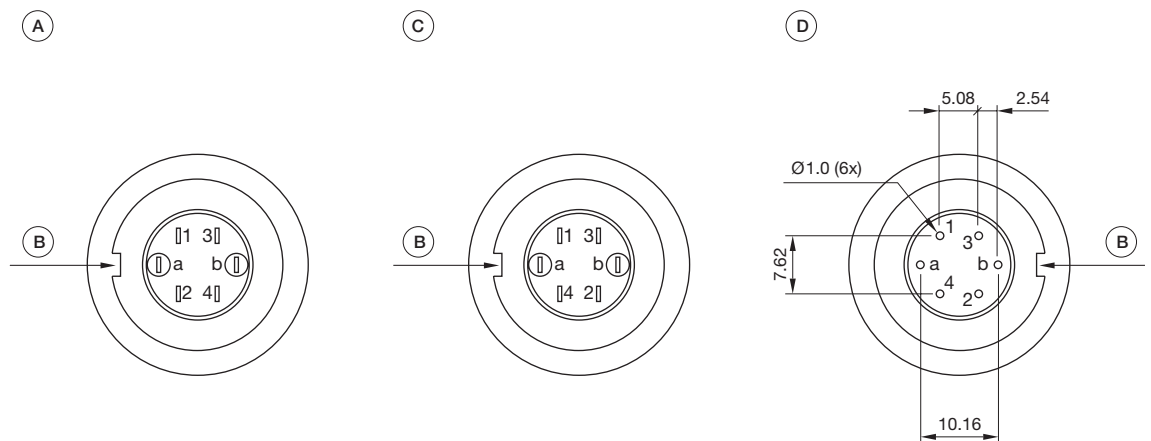
Mounting cut-outs



Wiring diagrams



Component layouts



Dimensions [mm]
 A = Terminals (rear side)
 B = Anti twist device
 C = Diode block
 D = Drilling plan (component side)